



42 Beech Court, Mapperley – NG3 5PZ
£100,000



42 Beech Court

Mapperley, Nottingham

Second floor retirement apartment for the over 60's (55's for couples) with Mapperley's amenities on the doorstep! Offering a lounge, kitchen, double bedroom and bathroom plus communal facilities!

Council Tax band: B

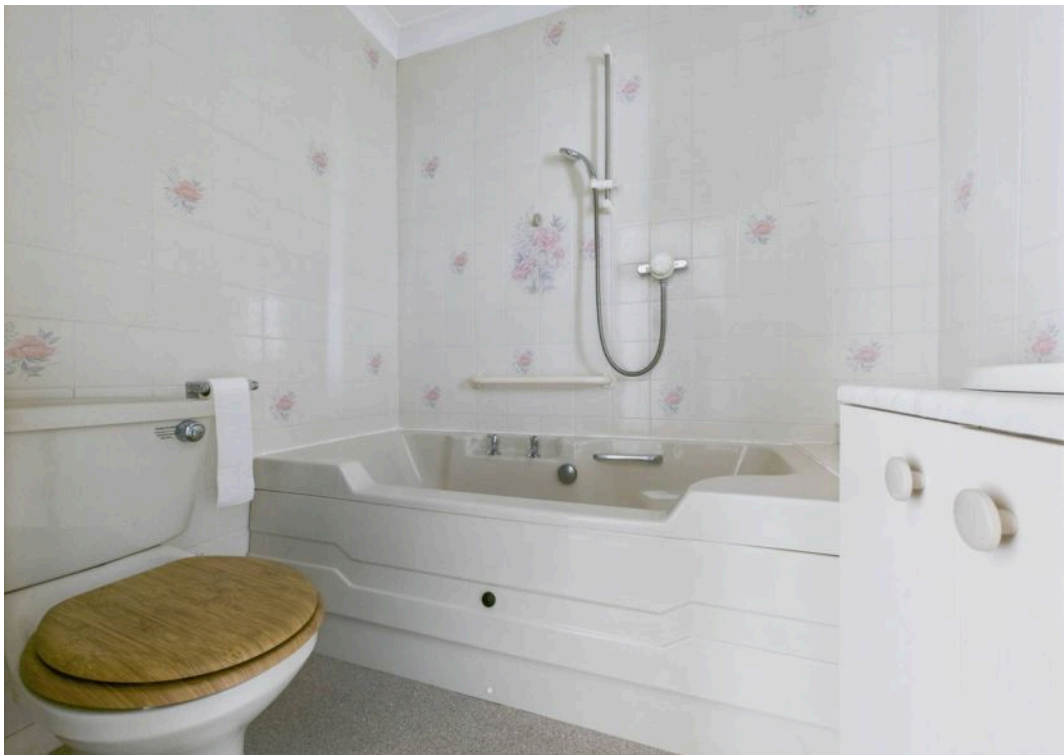
Tenure: Leasehold

EPC Energy Efficiency Rating: C

EPC Environmental Impact Rating: C

- Second floor retirement apartment
- Available to the over 60's (over 55's for couples)
- Mapperley's excellent amenities on the doorstep
- Spacious lounge/dining room
- Kitchen with integrated appliances
- Bedroom with in-built wardrobes
- Bathroom with three-piece suite
- Electric heating & double glazing
- House manager, laundry room & residents lounge
- Parking available upon request and availability

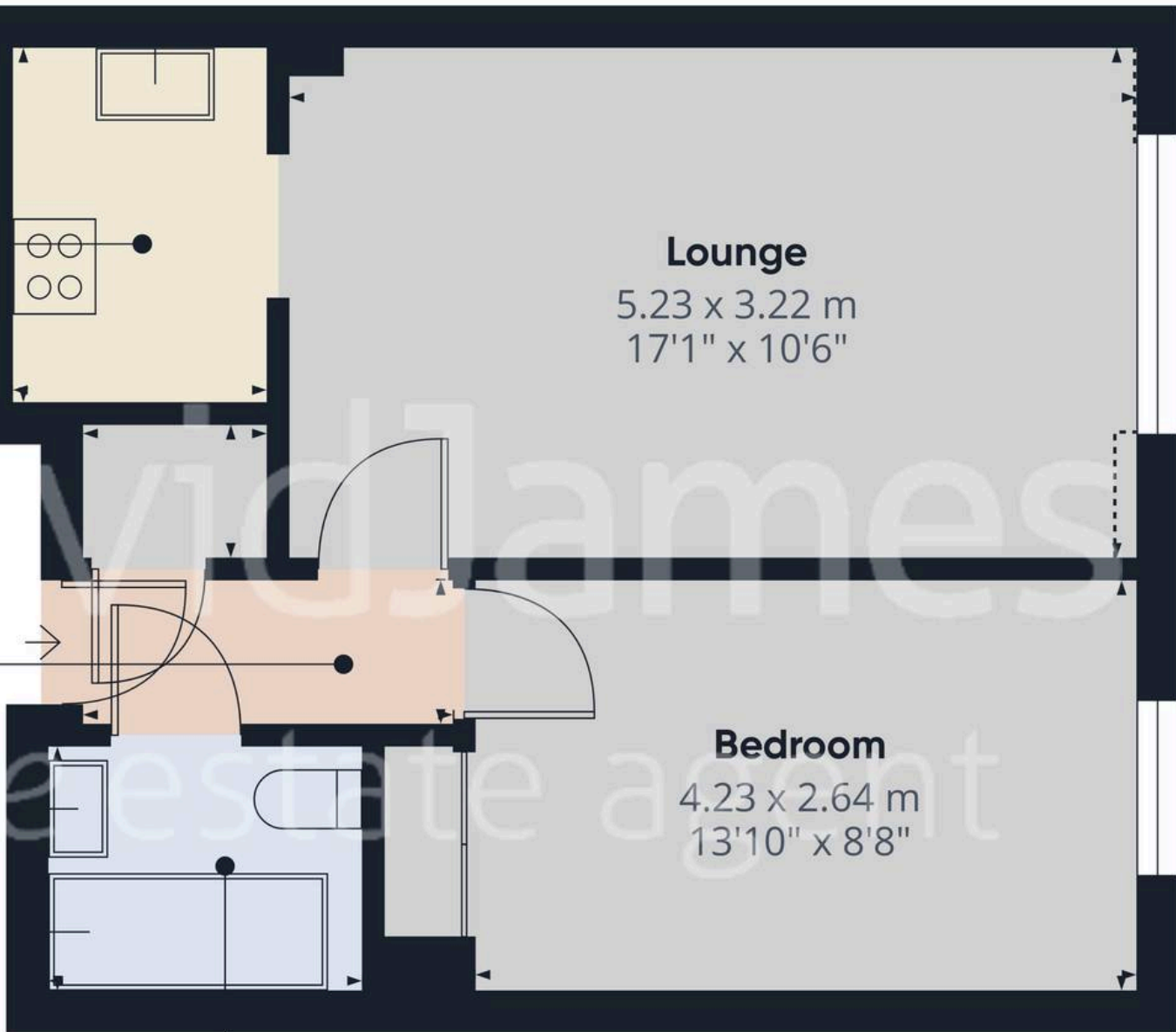






Kitchen
1.64 x 2.22 m
5'4" x 7'3"

**Entrance
Hallway**
2.42 x 0.93 m
7'11" x 3'0"



Bathroom
2.06 x 1.63 m
6'9" x 5'4"

Lounge
5.23 x 3.22 m
17'1" x 10'6"

Bedroom
4.23 x 2.64 m
13'10" x 8'8"

Approximate total area⁽¹⁾

39.4 m²
426 ft²

Reduced headroom

0.2 m²
3 ft²

(1) Excluding balconies and terraces

Reduced headroom

..... Below 1.5 m/5 ft

While every attempt has been made to ensure accuracy, all measurements are approximate, not to scale. This floor plan is for illustrative purposes only.

Calculations are based on RICS IPMS 3C standard.

GIRAFFE360



David James Estate Agents

David James Estate Agents, 45B Plains Road – NG3 5JU

0115 962 4213 • mapperley@david-james.com • www.david-james.com

These particulars are produced in good faith and are set out as a general guide only. Measurements are approximate and floor plans are for illustrative purposes only. Services have not been tested. We have established professional relationships with third-party suppliers for the provision of services to Clients, details of which can be found on the property listing page on our website.