



44 Burton Road, Kennington

Guide Price **£340,000**

Skippers

44 Burton Road

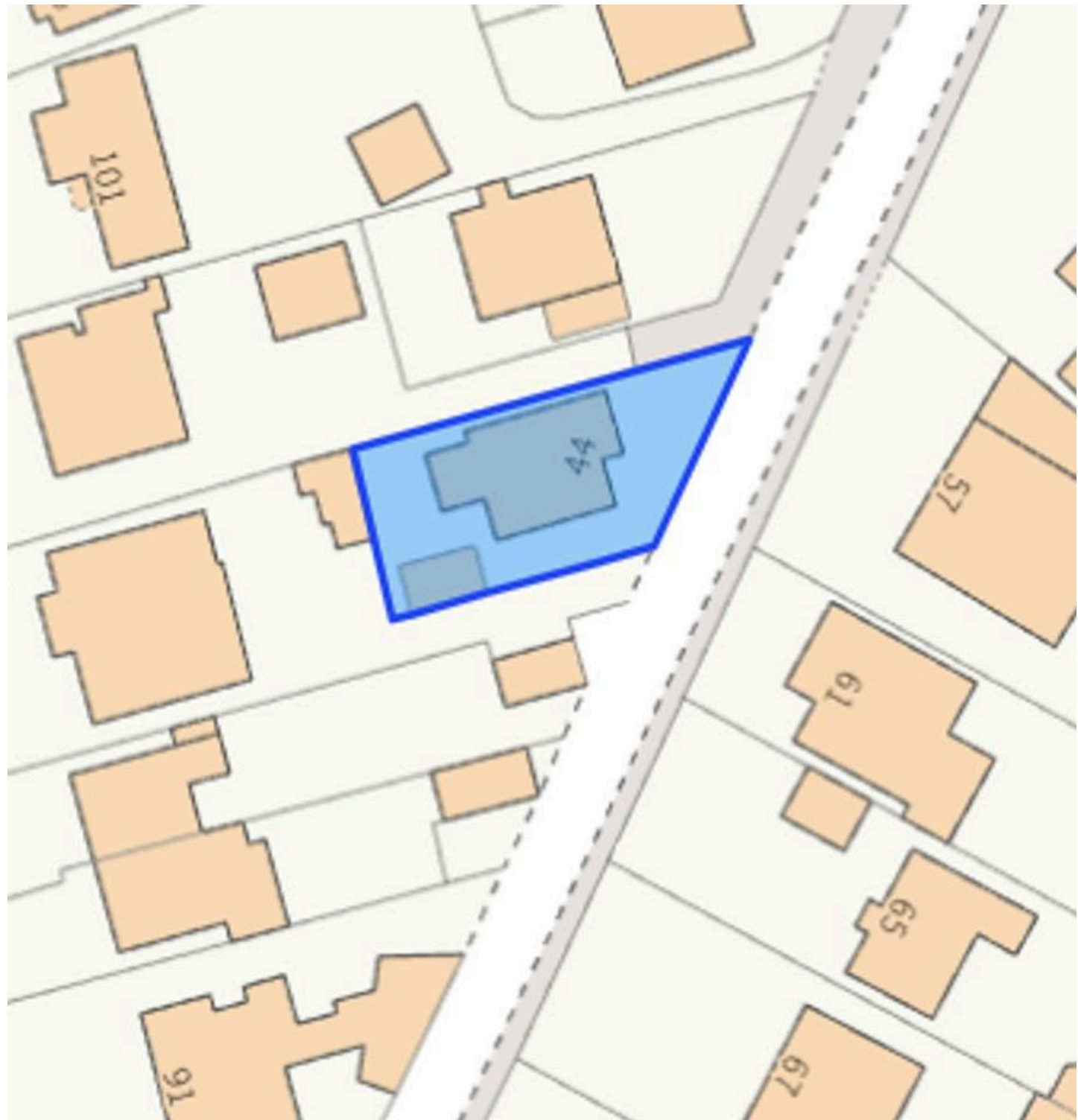
Kennington, Ashford

Charming 2-bed detached bungalow in Kennington with modern kitchen, 2 double bedrooms, bright lounge, conservatory, and elegant bathroom. Front shingle garden, rear lawn with patio, garage, and driveway. Ideal for peaceful retreat with modern comforts.

Council Tax band: D

Tenure: Freehold

- NO ONWARD CHAIN
- Well Presented 2 Bedroom Detached Bungalow
- Detached Garage with Block Paved Driveway for 2 Vehicles
- Modern Fitted Kitchen/Diner
- UPVc Conservatory
- Popular & Convenient Kennington Location with Good Access to Public Transport Links and Shops
- Lounge
- Enclosed Low Maintenance Rear Garden
- Bathroom with White Suite
- Guide Price £340,000 - £350,000



Porch

Door through to entrance of property

Hallway

Doors leading to principle rooms also loft access.

Lounge

14' 8" x 10' 11" (4.47m x 3.33m)

Double aspect with window to front and side, carpeted.

Kitchen/Diner

12' 10" x 12' 9" (3.91m x 3.89m)

Range of shaker style cupboards and drawers beneath mottled effect worktops and additional wall mounted units, wall mounted boiler for heating and hot water, space and plumbing for washing machine and dishwasher, sink with mixer tap and drainer, 4 ring gas hob with extractor fan over, 2 windows and door leading to rear, eye level oven.

Bedroom

10' 11" x 10' 11" (3.33m x 3.33m)

Double aspect with window to rear and side, carpeted with built in wardrobes.

Bedroom

11' 4" x 8' 11" (3.45m x 2.72m)

Window to front and carpeted.

Bathroom

White suite comprising low level wc, pedestal wash hand basin, panelled bath with shower over, obscured window to side and locally tiled walls.

Conservatory

12' 7" x 9' 7" (3.84m x 2.92m)

UPVc construction upon dwarf brick wall with doors to side leading to garden.





Porch

Door through to entrance of property

Hallway

Doors leading to principle rooms also loft access.

Lounge

14' 8" x 10' 11" (4.47m x 3.33m)

Double aspect with window to front and side, carpeted.

Kitchen/Diner

12' 10" x 12' 9" (3.91m x 3.89m)

Range of shaker style cupboards and drawers beneath mottled effect worktops and additional wall mounted units, wall mounted boiler for heating and hot water, space and plumbing for washing machine and dishwasher, sink with mixer tap and drainer, 4 ring gas hob with extractor fan over, 2 windows and door leading to rear, eye level oven.

Bedroom

10' 11" x 10' 11" (3.33m x 3.33m)

Double aspect with window to rear and side, carpeted with built in wardrobes.

Bedroom

11' 4" x 8' 11" (3.45m x 2.72m)

Window to front and carpeted.

Bathroom

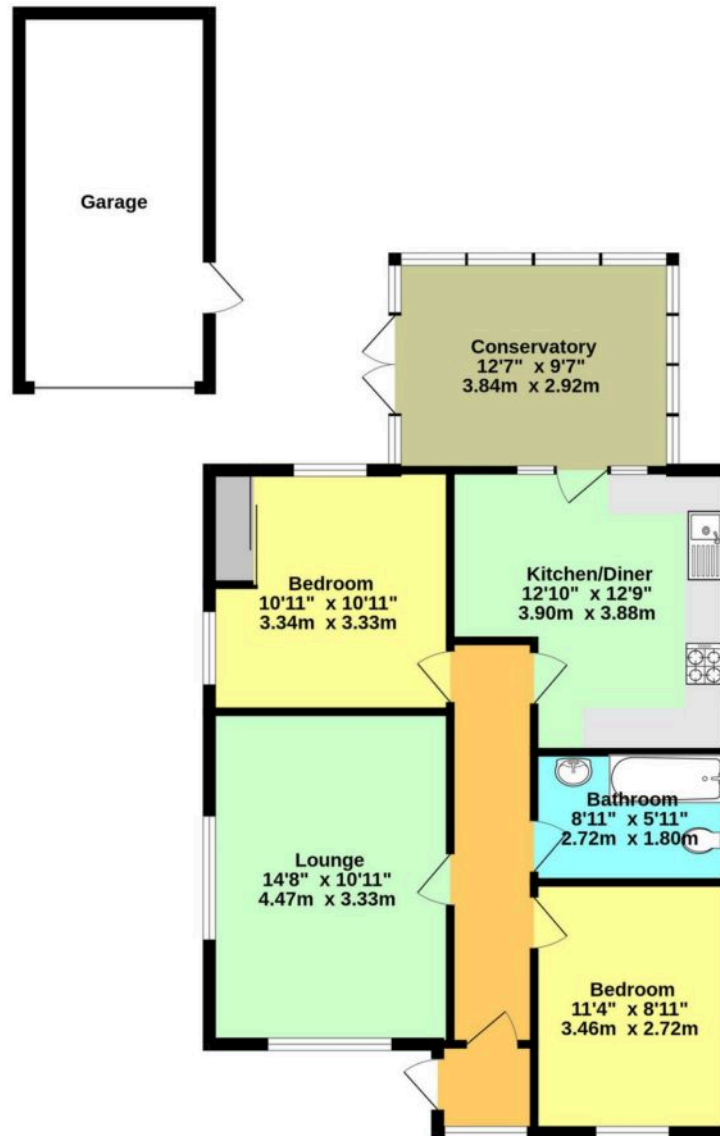
White suite comprising low level wc, pedestal wash hand basin, panelled bath with shower over, obscured window to side and locally tiled walls.

Conservatory

12' 7" x 9' 7" (3.84m x 2.92m)

UPVc construction upon dwarf brick wall with doors to side leading to garden.





Whilst every attempt has been made to ensure the accuracy of the floorplan contained here, measurements of doors, windows, rooms and any other items are approximate and no responsibility is taken for any error, omission or mis-statement. This plan is for illustrative purposes only and should be used as such by any prospective purchaser. The services, systems and appliances shown have not been tested and no guarantee as to their operability or efficiency can be given.
Made with Metropix ©2025





Skippers Estate Agents – Ashford

5 Kings Parade High Street, Ashford – TN24 8TA

01233 632383

ashford@skippers-ea.co.uk

skippers-ea.co.uk

Skippers

