



7 Stonelands Cottages Stonelands Bridge, Dawlish

Guide Price £220,000





7 Stonelands Cottages Stonelands Bridge

Dawlish, Dawlish

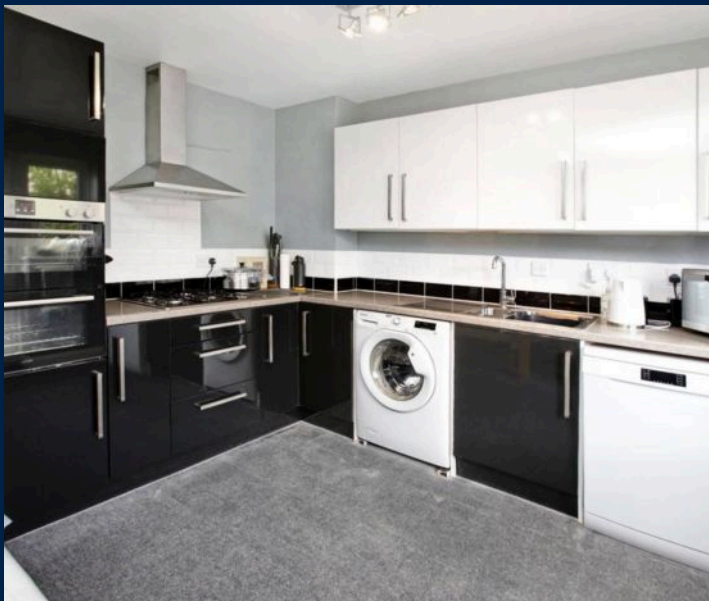
Council Tax band: C

Tenure: Freehold

EPC Energy Efficiency Rating: C

EPC Environmental Impact Rating: C

- A LOVELY TERRACED HOUSE IN A LEVEL LOCATION
- LOCATED IN A QUIET SMALL DEVELOPMENT, JUST HALF A MILE FROM DAWLISH TOWN CENTRE
- ENTRANCE PORCH
- LIVING ROOM WITH BOX BAY WINDOW
- KITCHEN DINER
- TWO BEDROOMS
- BATHROOM
- FRONT AND REAR GARDENS
- ALLOCATED PARKING SPACE
- UPVC DOUBLE GLAZING AND GAS CENTRAL HEATING

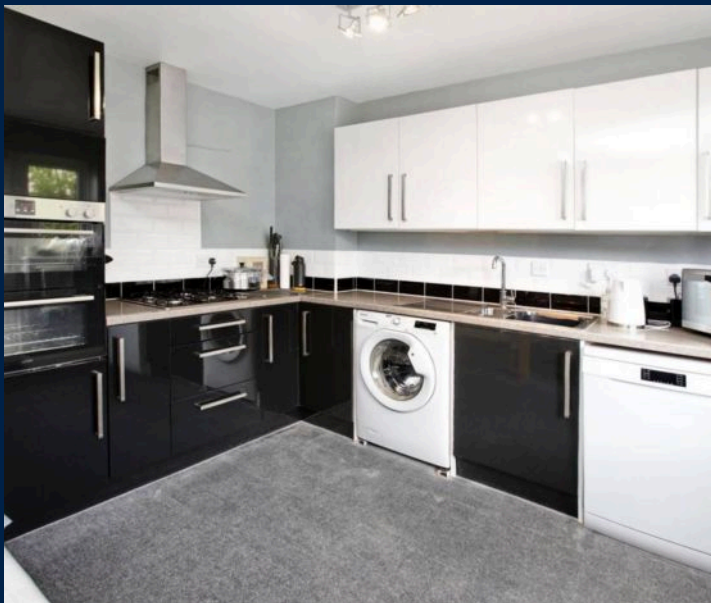


You can include any text here. The text can be modified upon generating your brochure.

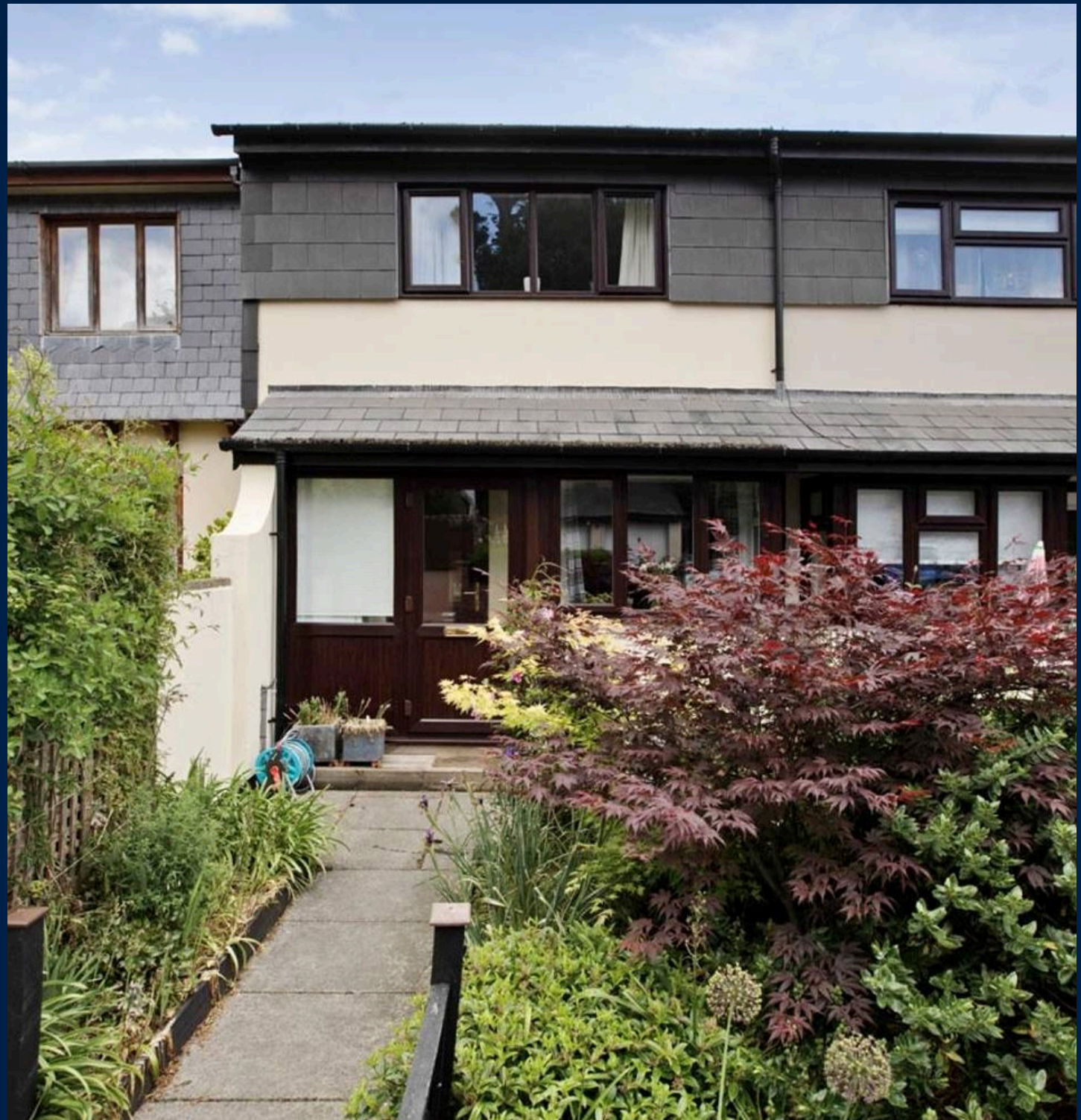




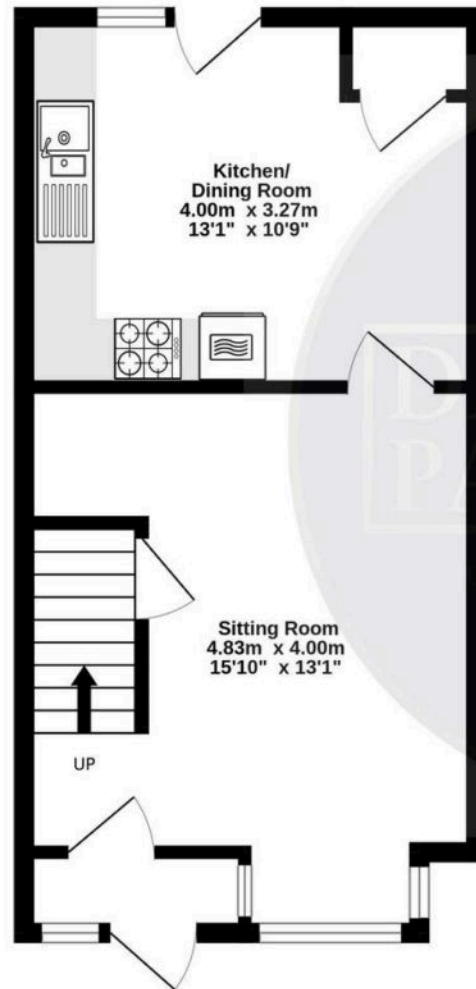
You can include any text here. The text can be modified upon generating your brochure.



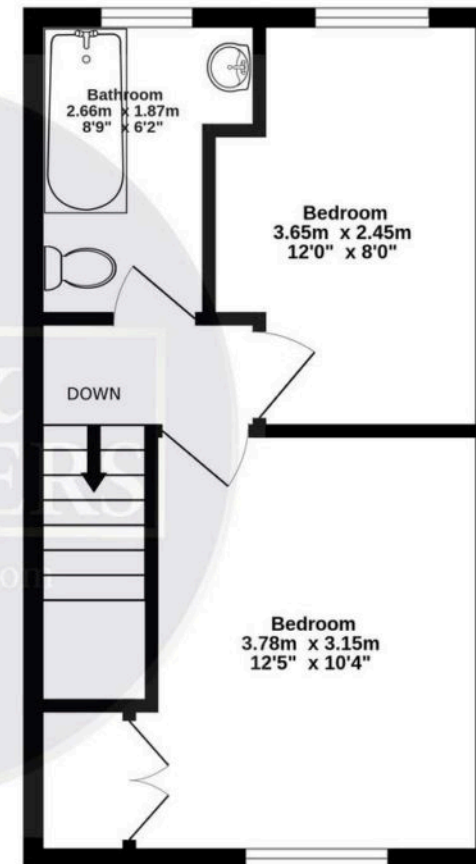
You can include any text here. The text can be modified upon generating your brochure.



Ground Floor
32.0 sq.m. (345 sq.ft.) approx.



1st Floor
29.7 sq.m. (320 sq.ft.) approx.



TOTAL FLOOR AREA : 61.7 sq.m. (664 sq.ft.) approx.

Whilst every attempt has been made to ensure the accuracy of the floorplan contained here, measurements of doors, windows, rooms and any other items are approximate and no responsibility is taken for any error, omission or mis-statement. This plan is for illustrative purposes only and should be used as such by any prospective purchaser. The services, systems and appliances shown have not been tested and no guarantee as to their operability or efficiency can be given.
Made with Metropix ©2025

