



Page House Torbay Road, Paignton

Paignton

Guide Price £175,000

ABSOLUTE



Page House Torbay Road

Paignton,

Contemporary 2-bed apartment on the 4th floor with sea & park views. Features lounge/diner, balcony, modern kitchen, secure parking, lift access. Ideal coastal living with charm & allure. Viewing recommended.

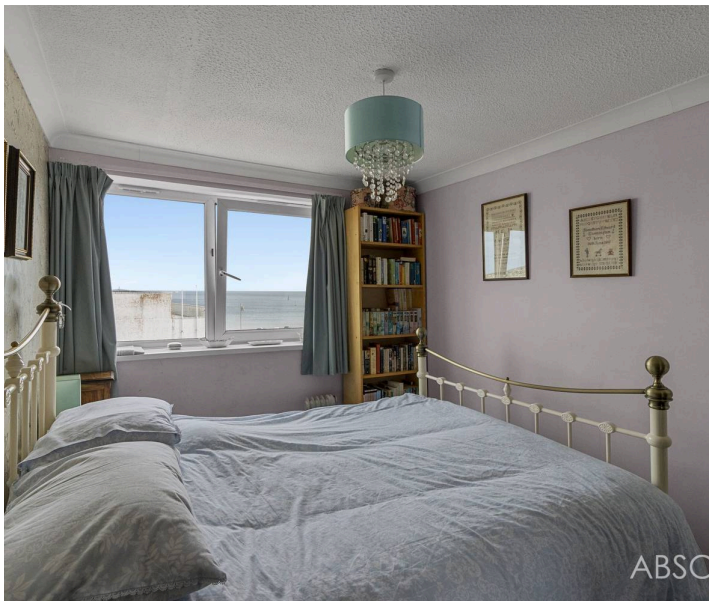
Council Tax band: C

Tenure: Leasehold

EPC Energy Efficiency Rating: D

EPC Environmental Impact Rating: E

- Stunning sea and park views
- Purpose built apartment located on the fourth floor
- Lift and stairs to all floors
- Lounge/diner with balcony enjoying the sea views
- Modern fitted kitchen
- Two bedrooms
- Modern shower room/WC
- Secure under cover parking
- Internal viewing highly recommended



Page House Torbay Road

Paignton,

The property is located along Paignton sea front from where it enjoys stunning sea views just a hop, skip and a jump from the main town centre which boasts an array of shops, facilities and amenities. The main bus and train station are within 1/3 of a mile level walk with connections to the neighbouring towns of Torquay and Brixham on the bus and connections to the mainline train station at Newton Abbot.

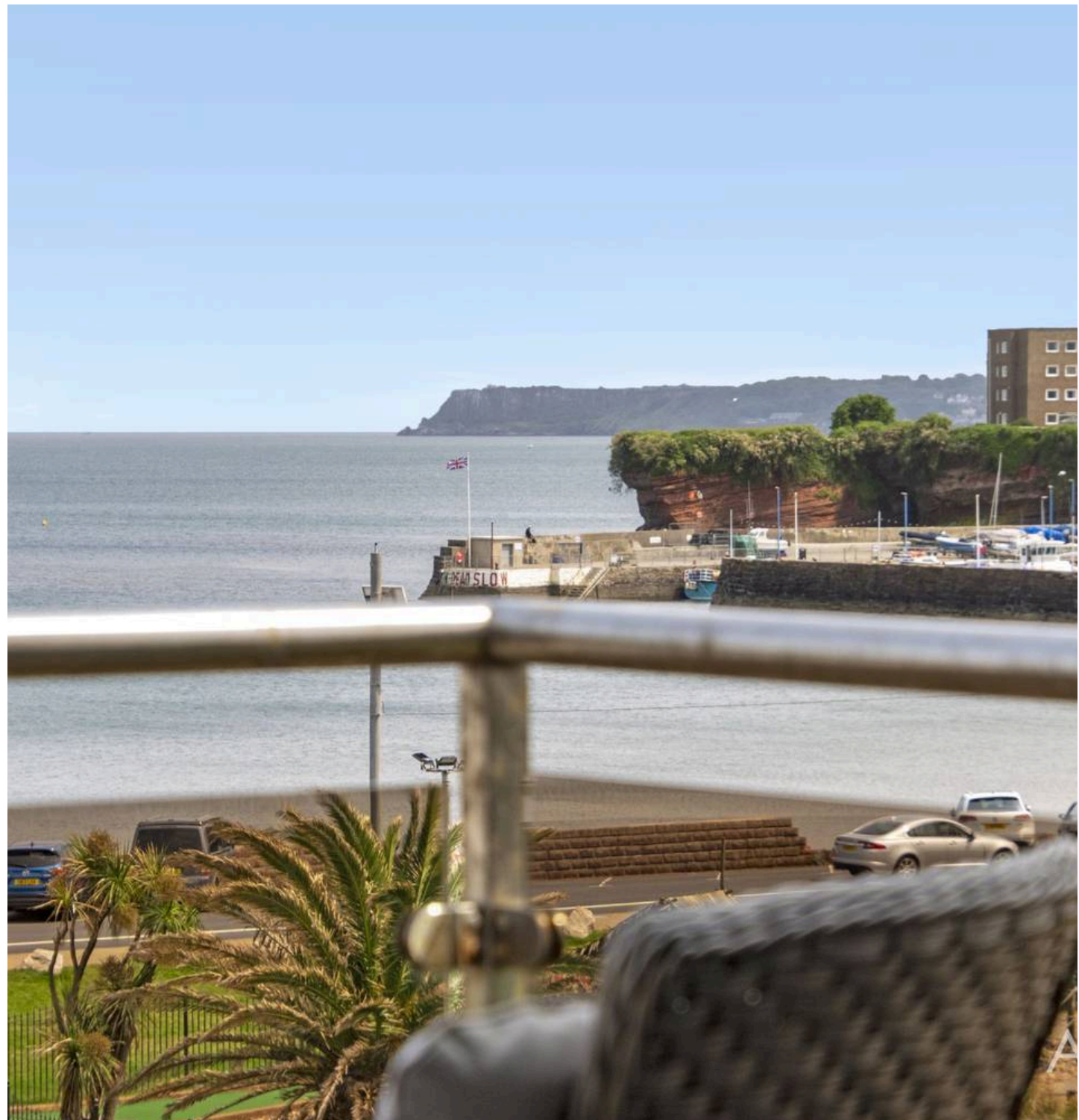
Absolute Sales & Lettings

Absolute Sales & Lettings, 27 Hyde Road - TQ4 5BP

01803 890110

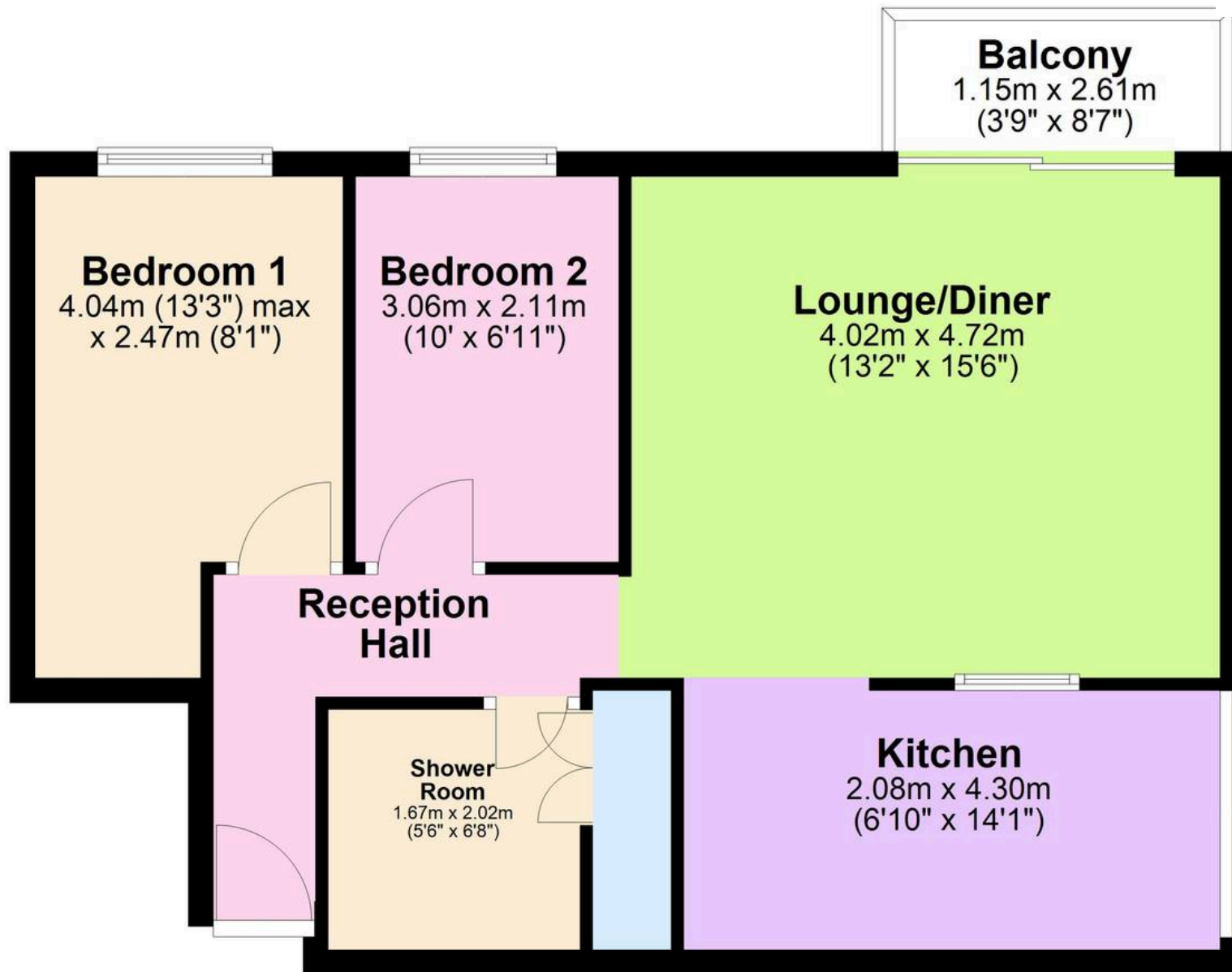
paignton@movewithabsolute.co.uk

<http://www.movewithabsolute.co.uk>



Fourth Floor

Approx. 54.9 sq. metres (590.5 sq. feet)



Total area: approx. 54.9 sq. metres (590.5 sq. feet)

