







## 775 Alexandria

Victoria Wharf, Cardiff

Council Tax band: G; Tenure: Leasehold

EPC Energy Efficiency Rating: D

- SPACIOUS 7TH FLOOR APARTMENT
- PANORAMIC BALCONY VIEWS
- 3 DOUBLE BEDROOMS
- BATHROOM & EN SUITE
- FLEXIBLE OPEN PLAN LIVING AREA
- ELECTRIC HEATING; SECURE GATED COMPLEX
- 24 HOUR CONCIERGE
- SOUGHT AFTER ALEXANDRIA BLOCK
- EPC RATING D68

Rarely available in probably one of the most sought-after blocks within Victoria Wharf. This 7th floor spacious apartment offers flexible accommodation with an open plan living area and the three generous bedrooms. The kitchen has been replaced and includes Corian custom surfaces and NEFF appliances. There is a large main bathroom and an en suite shower room to the master bedroom. The star of the show is the balcony with amazing marina water views and far-reaching city views towards the Principality Stadium and mountain ranges beyond. Outside is one allocated undercroft parking space conveniently close to the entrance door. Access into the city centre is easy with a bus stop just outside the development or Cogan railway train station just a 10-minute walk away. Furniture contents available by separate negotiation.





### **Communal Entrance**

Secure communal entrance with lift or staircase providing access to all floors. The select hallway on level 7 serves just 4 apartments with their own waste and recycling room.

### **Private Hall**

Secure door with integral door viewer. 'L' shaped hall providing access to all bedrooms, main bathroom and living area. Linen cupboard with shelving and hot water cylinder.

### **Open Plan Lounge/Diner**

23' 4" x 15' 5" (7.12m x 4.71m)

Sociable space with large glass windows and door opening onto the wrap-around balcony with stunning river views and as far as the eye can see. Access to kitchen.

### **Kitchen**

10' 6" x 7' 8" (3.21m x 2.33m)

Window with river views. Replaced in recent years with very little use since. NEFF appliances include an oven, induction hob, fridge/freezer, microwave slim-line dishwasher and washing machine. Beautiful seamless Corian work surfaces, bowl and upstands. Timber effect flooring.

### **Bedroom One**

14' 3" x 12' 0" (4.34m x 3.67m)

Generous master bedroom with window offering river views. Door to en suite. Fitted wardrobes.

### **En-Suite**

Fully tiled double shower enclosure with thermostatic mixer shower. Vanity unit with tiled surround, basin, cupboards beneath and enclosed WC. Wall mirrors. Ladder style vertical towel radiator.







### **Bedroom Two**

13' 3" x 10' 6" (4.03m x 3.21m)

Window with river views. Fitted wardrobes.

### **Bedroom Three**

10' 7" x 8' 9" (3.23m x 2.66m)

Window with river views. Currently used as an office.

### **Bathroom**

9' 0" x 6' 3" (2.74m x 1.90m)

Fully tiled shower bath with thermostatic mixer. Vanity unit with tiled surround, basin, cupboards beneath and enclosed WC. Wall mirror. Ladder style vertical towel radiator. Ceramic floor tiles.

### **Cladding Information**

The development is currently undergoing cladding replacement, where scaffolding is already erected. The revised date for the Alexandra block is currently 2027. We are informed there is no cost to the leaseholder as Taylor Wimpey are responsible for the repairs.

### **Communal Garden**

Communal waste and recycling area. Communal mail hall with allocated mailbox. Key fob provides access into the development and entry into the building. Pedestrian access gates to the river pathways with keypad entry. Secure cycle store. Concierge office.

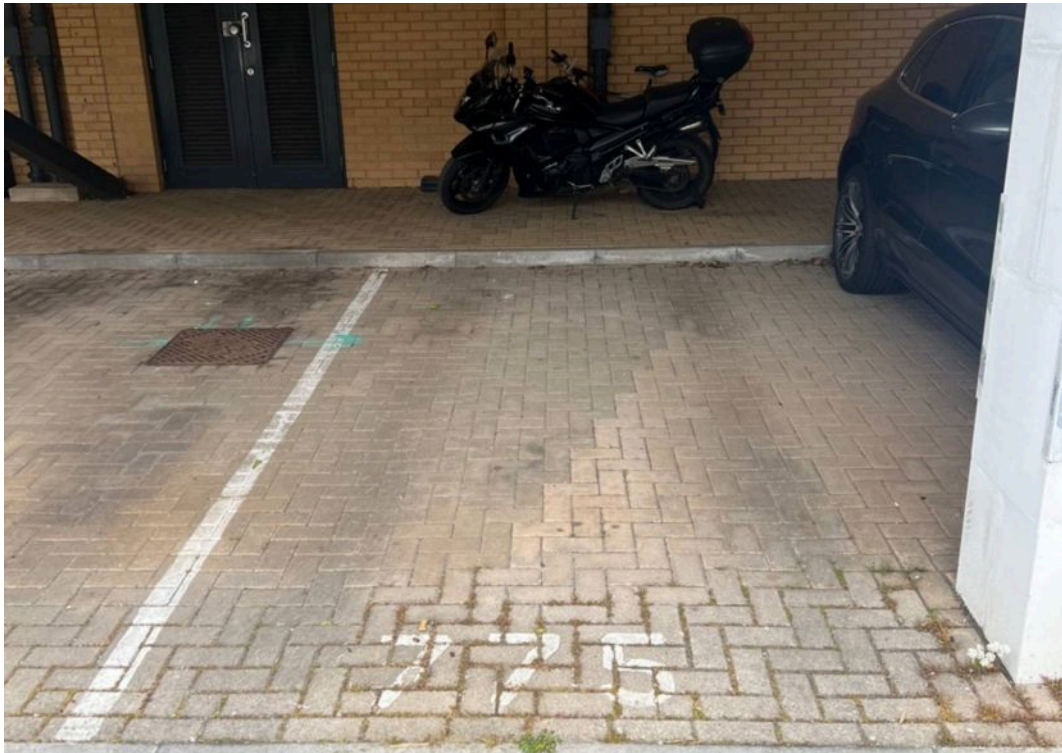
### **SECURE GATED**

1 Parking Space

The development is secure with electric gates for vehicles and pedestrians. Allocated undercroft parking (marked 775).

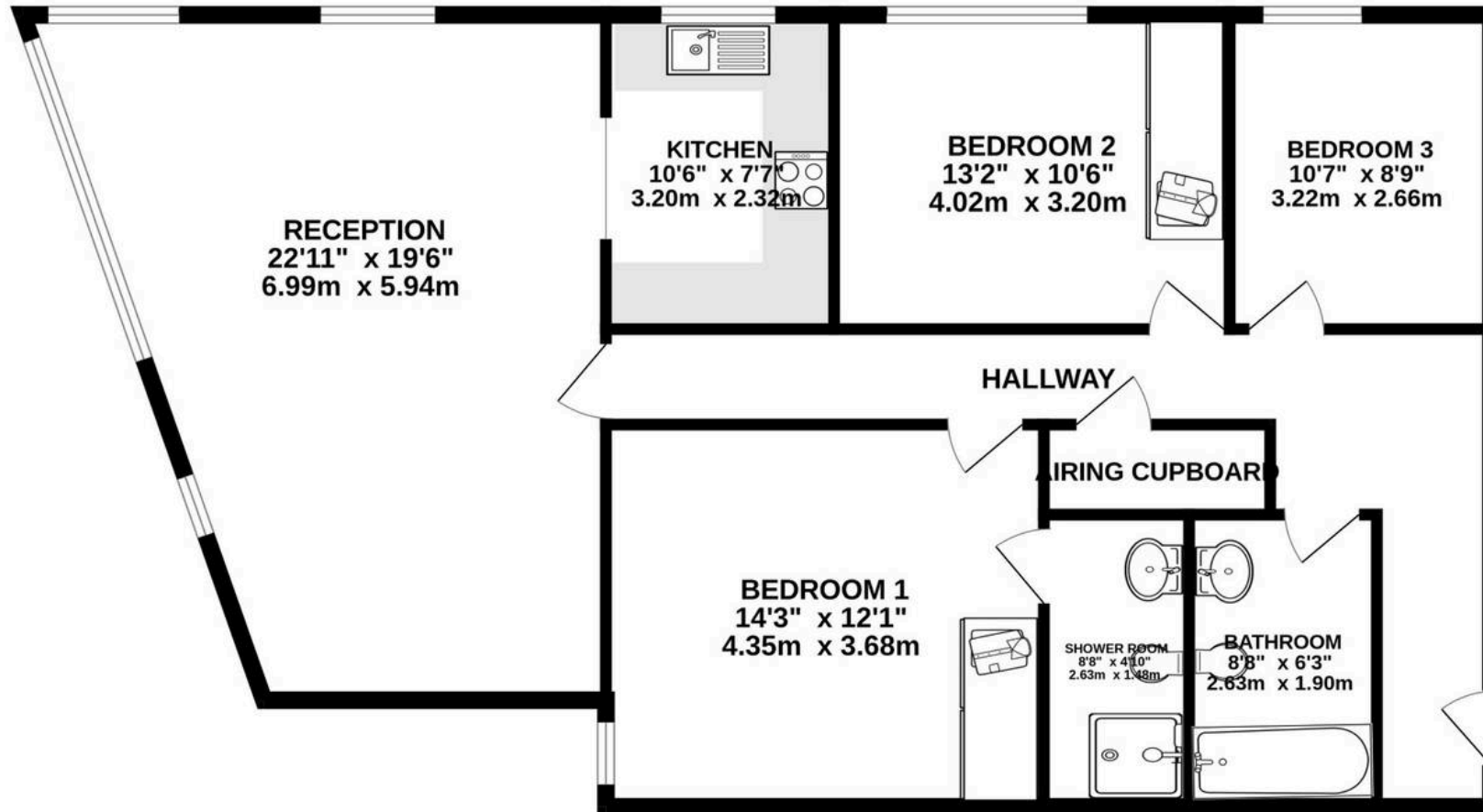








GROUND FLOOR  
1163 sq.ft. (108.0 sq.m.) approx.



TOTAL FLOOR AREA : 1163 sq.ft. (108.0 sq.m.) approx.

Whilst every attempt has been made to ensure the accuracy of the floorplan contained here, measurements of doors, windows, rooms and any other items are approximate and no responsibility is taken for any error, omission or mis-statement. This plan is for illustrative purposes only and should be used as such by any prospective purchaser. The services, systems and appliances shown have not been tested and no guarantee as to their operability or efficiency can be given.  
Made with Metropix ©2025



## Chris Davies Estate Agents

Chris Davies Estate Agents, 29 Fontygary Road – CF62 3DS

01446 711900

[rhoose@chris-davies.co.uk](mailto:rhoose@chris-davies.co.uk)

[www.chris-davies.co.uk/](http://www.chris-davies.co.uk/)

HELPFUL INFORMATION – whilst we try to ensure our sales particulars are complete, accurate and reliable, if there is any point which is particularly important, please ask and we will be happy to check it, including specific information in respect of commuting links, surroundings, noise, views, or condition. For security purposes, applicants who wish to view will need to provide their name, address and telephone number. All measurements are approximate to the widest and longest points. Buyers are advised to instruct a solicitor to obtain verification of tenure and a surveyor to check that appliances, installations and services are in satisfactory condition.