



39 Osborne Road, London
London

£3,350 pcm



39 Osborne Road

London, London

A beautiful three double bedroom Victorian house with a great south/west facing garden.
Council Tax band: D

Tenure: Freehold

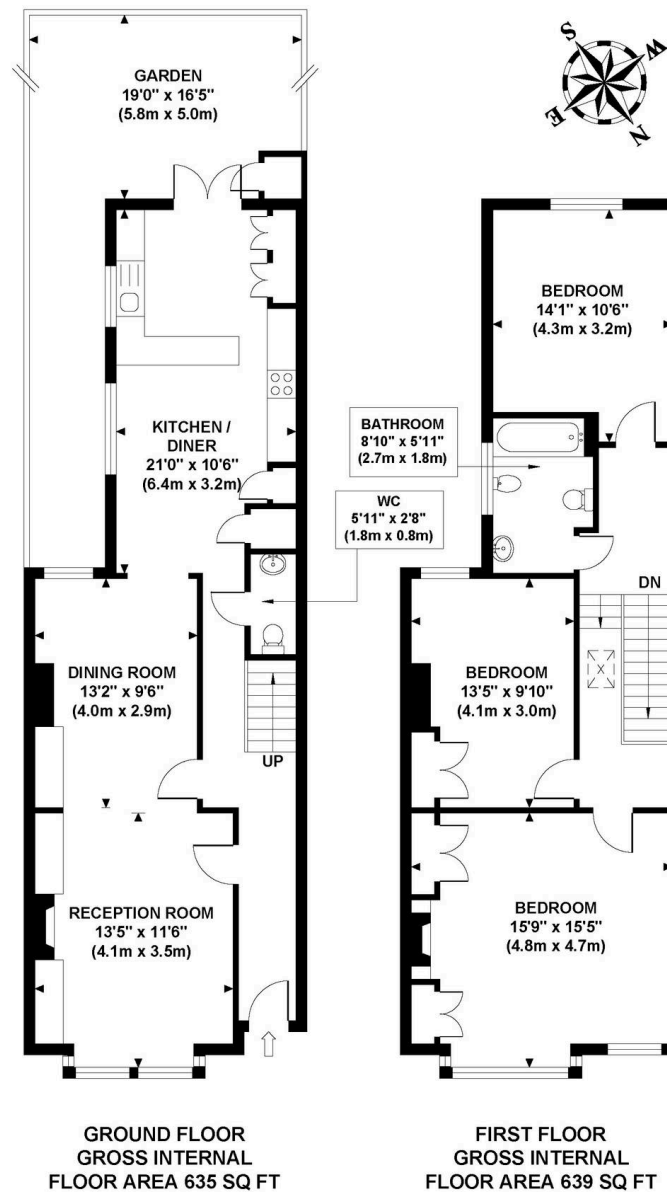
EPC Energy Efficiency Rating: D

EPC Environmental Impact Rating: D



OSBORNE ROAD

Approximate Gross Internal Area
1274 sq ft / 118.40 sq m



Although every attempt has been made to ensure accuracy,
all measurements are approximate and no responsibility is taken for any error, omission, or mid-statement.
This floor plan is for illustrative purposes only and not to scale. Measured in accordance to RICS standards.
GB PRO PHOTOS



Garrison Estates

20 College Parade, Salusbury Road, Queens Park – NW6 6RN

020 4511 4820 • contact@garrisonestates.co.uk • www.garrisonestates.co.uk/