



36 Flatts Lane, Calverton, Nottingham – NG14 6JZ

Guide Price **£325,000**

DavidJames
the estate agent



36 Flatts Lane

Calverton, Nottingham

GUIDE PRICE £325,000-£335,000 Generous detached family home on a large corner plot in the ever-popular village of Calverton! 4 beds, open-plan dining kitchen & superb gardens plus multi-car parking!

Council Tax band: C

Tenure: Freehold

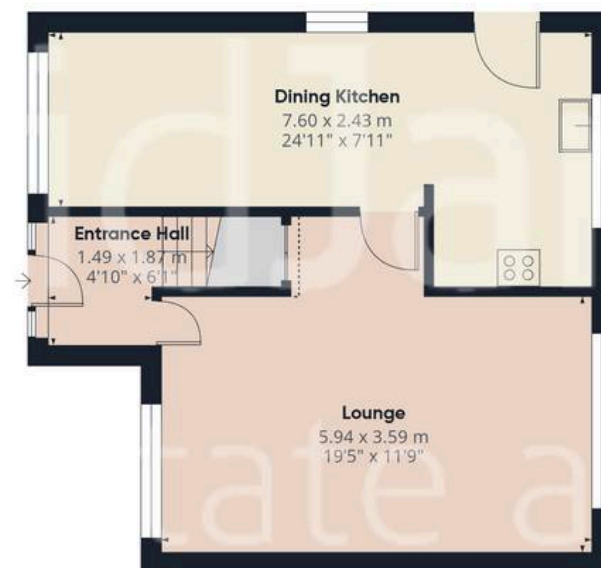
EPC Energy Efficiency Rating: D

EPC Environmental Impact Rating:

- Detached family home
- Conveniently positioned for access to Calverton's popular schools, shopping amenities and reliable bus service
- Large and inviting lounge with a feature electric fire and garden views
- Open plan dining kitchen with a generous range of fitted units
- Four first floor bedrooms (main bedroom with fitted wardrobes)
- Stylish family bathroom with a separate shower cubicle
- Gas central heating with an Ideal combi boiler
- Generous lawned rear garden with a feature pond
- Driveway and gated hardstanding provide off-street parking for multiple vehicles
- Useful detached garage/workshop to the rear with power and lighting







Floor 0



Floor 1

Approximate total area⁽¹⁾

90.4 m²

972 ft²

Reduced headroom

0.1 m²

1 ft²

(1) Excluding balconies and terraces

Reduced headroom

Below 1.5 m/5 ft

Calculations reference the RICS IPMS 3C standard. Measurements are approximate and not to scale. This floor plan is intended for illustration only.

GIRAFFE360



David James Estate Agents

98-100 Front Street, Arnold - NG5 7EJ

0115 955 5550 • arnold@david-james.com • www.david-james.com

These particulars are produced in good faith and are set out as a general guide only. Measurements are approximate and floor plans are for illustrative purposes only. Services have not been tested. We have established professional relationships with third-party suppliers for the provision of services to Clients, details of which can be found on the property listing page on our website.