



14 Highfield Drive, Carlton – NG4 1JQ

Guide Price £160,000

DavidJames  
the estate agent





## 14 Highfield Drive

Carlton, Nottingham

GUIDE PRICE £150,000-£160,000 Mid-terrace 2 bed house offered with no chain and just a short walk from Carlton's amenities! 2 reception rooms, kitchen, 4-piece bathroom and a southerly-facing garden!

Council Tax band: A

Tenure: Freehold

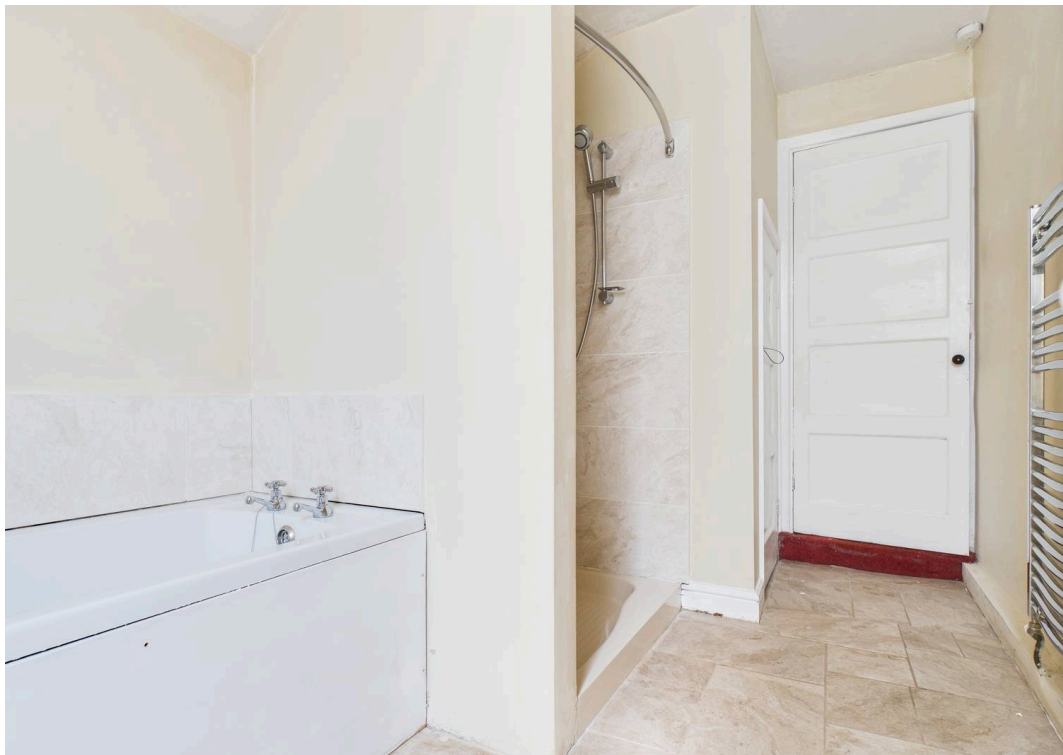
EPC Energy Efficiency Rating: C

EPC Environmental Impact Rating:

- Mid-terrace house with no upward chain
- Walking distance to Carlton's amenities, bus links and close to Nottingham City Centre
- Spacious lounge with a feature box window
- Kitchen with range of wall and base units with ample space for freestanding appliances
- Separate dining room with feature stove
- Two bright and spacious double bedrooms
- Sunroom with views over the rear garden
- Four-piece bathroom suite with mains shower enclosure
- Gas central heating
- Southerly-facing rear garden with useful summerhouse and shed









Floor 0

Approximate total area<sup>(1)</sup>

76 m<sup>2</sup>

819 ft<sup>2</sup>



Floor 1

(1) Excluding balconies and terraces

Calculations reference the RICS IPMS 3C standard. Measurements are approximate and not to scale. This floor plan is intended for illustration only.

GIRAFFE360





## David James Estate Agents

376 Carlton Hill, Carlton - NG4 1JA

0115 987 8957 • [carlton@david-james.com](mailto:carlton@david-james.com) • [www.david-james.com](http://www.david-james.com)

These particulars are produced in good faith and are set out as a general guide only. Measurements are approximate and floor plans are for illustrative purposes only. Services have not been tested. We have established professional relationships with third-party suppliers for the provision of services to Clients, details of which can be found on the property listing page on our website.