

A close-up photograph of several white thistle flowers. The flowers have a central green core with small, dark, rounded structures. The petals are white and pointed, radiating outwards. The leaves are green and have a very spiky, serrated edge. The background is dark and out of focus.

Foyle Court, Hollyfield Road,
Surbiton KT5 9AU



All images & floorplans in this brochure are for illustration purposes only

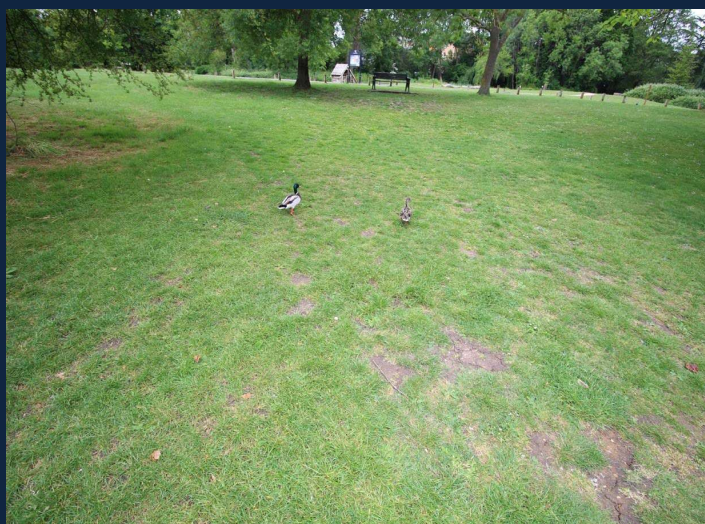
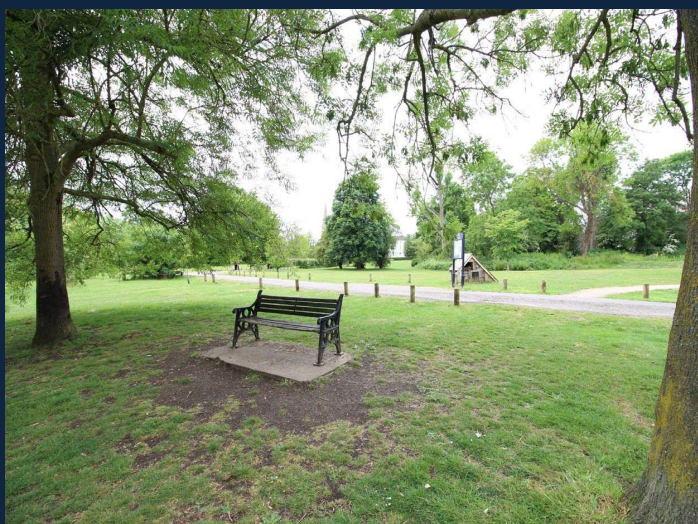
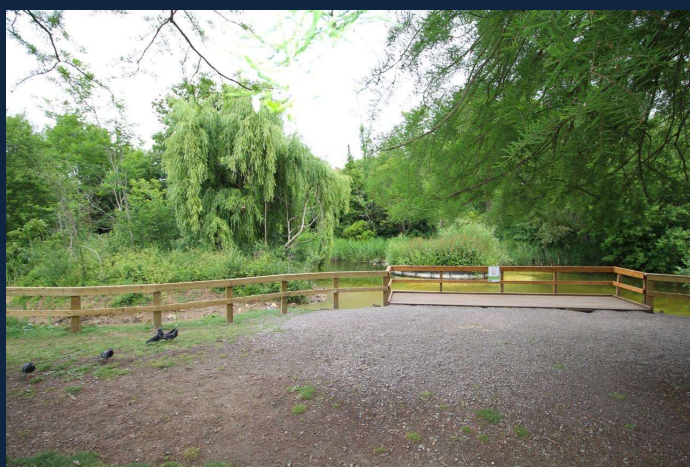


Surbiton:

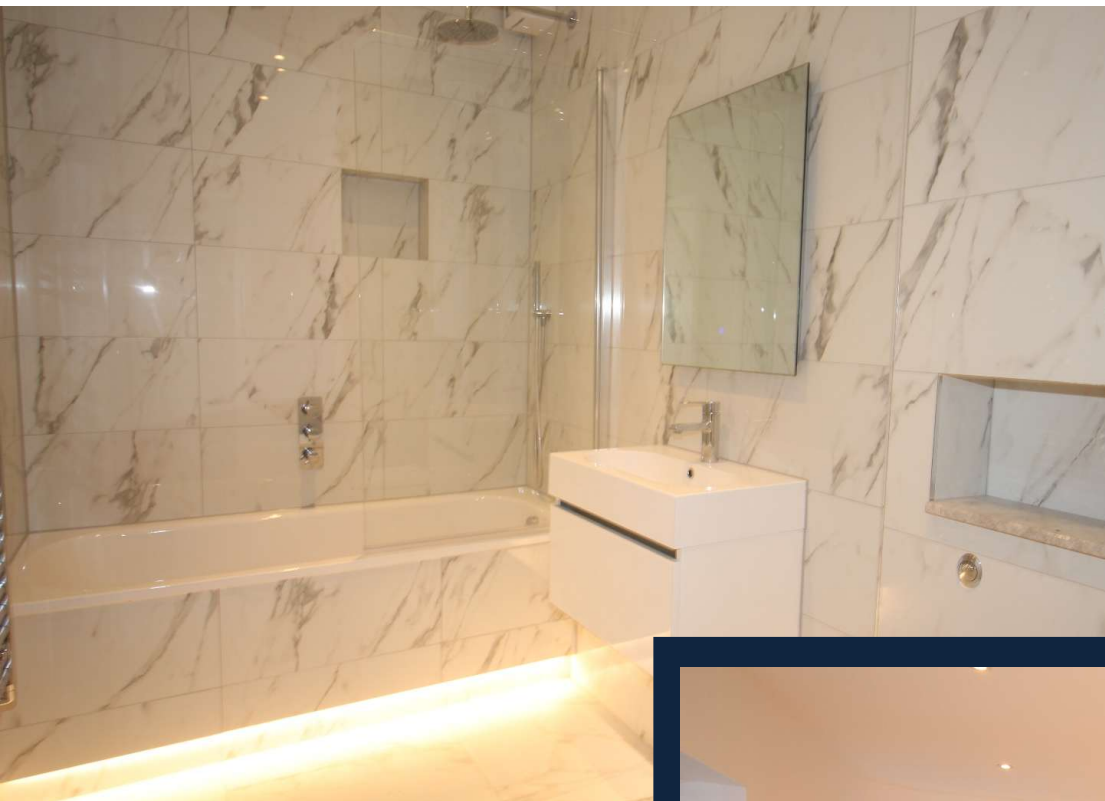
Surbiton is an affluent riverside town in South West London. It's a very vibrant location with a wide range of shops, cafes, excellent pubs and bars and award-winning restaurants. There is also a splendid selection of green spaces and parks just moments away. It should also be mentioned that it has the highly regarded Surbiton Farmers' Market on the third Saturday of every month. Surbiton is sumptuously positioned alongside the Thames and accordingly, walking, running, cycling and water sports are all on your doorstep.

The town also boasts the renowned Surbiton Racket and Fitness Club, established in 1881, which hosts the annual International Tennis Federation Surbiton Trophy which precedes the Wimbledon Championship. Surbiton is perfectly positioned with Hampton Court Palace, Bushy Park and Richmond Park and Kingston's Cosmopolitan Town Centre within easy reach. With an excellent selection of schools, a vibrant local community and trains taking only 16 minutes to Waterloo, the area has become one of the most desirable in South West London.



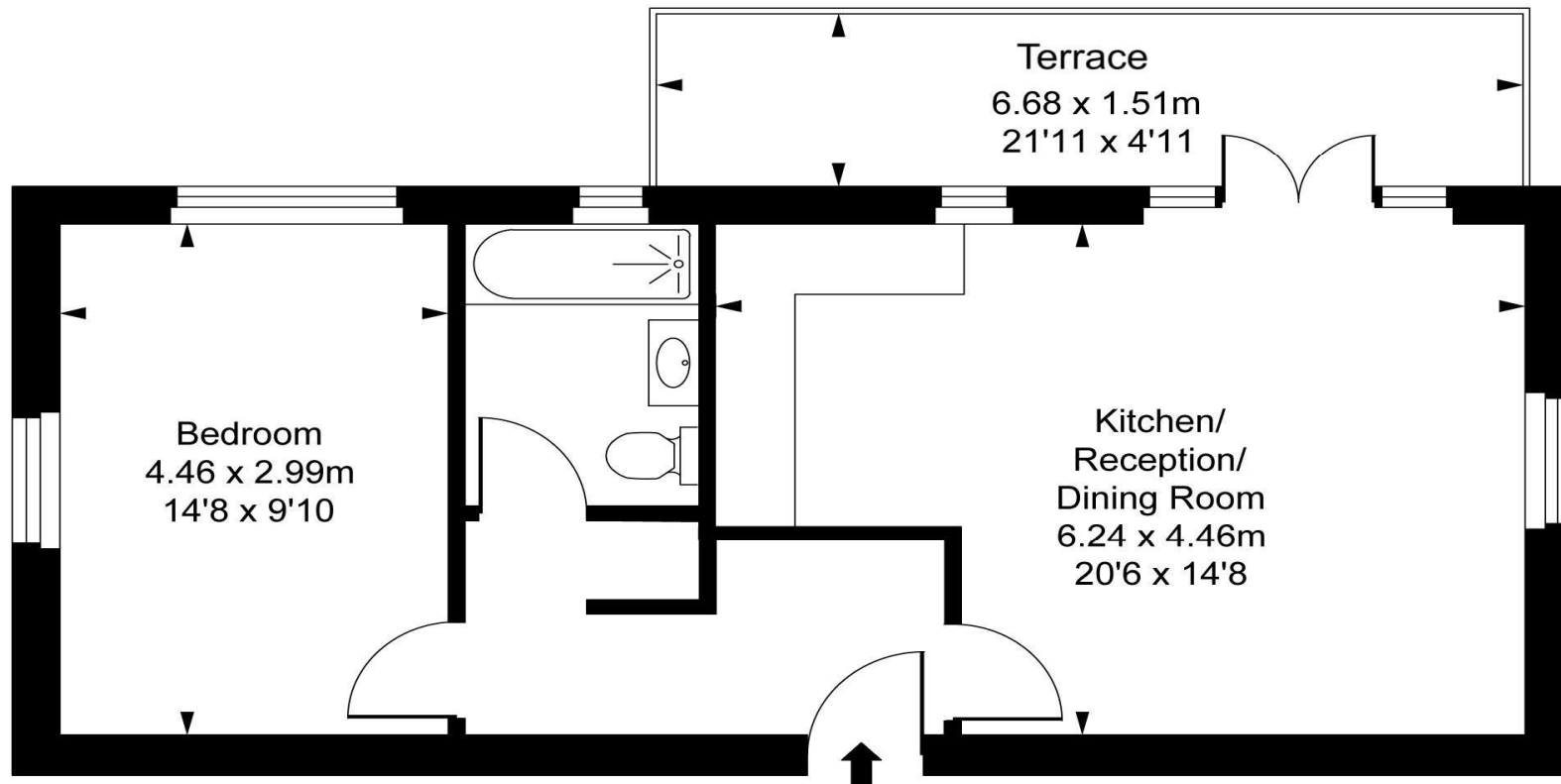


Foyle Court is positioned opposite Fishponds Conservation area.
A haven and tranquil retreat with parkland, ponds and wildlife.



Apartment One:

Foyle Court,
Hollyfield Road, KT5
Approximate Gross Internal Area
50.31 sq m / 542 sq ft



Ground Floor

ILLUSTRATION FOR IDENTIFICATION PURPOSES ONLY
ALL MEASUREMENTS AND AREA FIGURES SUPPLIED BY OTHERS, ACCURACY IS NOT GUARANTEED.
THIS PLAN MUST NOT BE REPRODUCED BY ANY OTHER PERSON WITHOUT PERMISSION

Apartment Two:

Foyle Court,
Hollyfield Road, KT5
Approximate Gross Internal Area
74.50 sq m / 802 sq ft

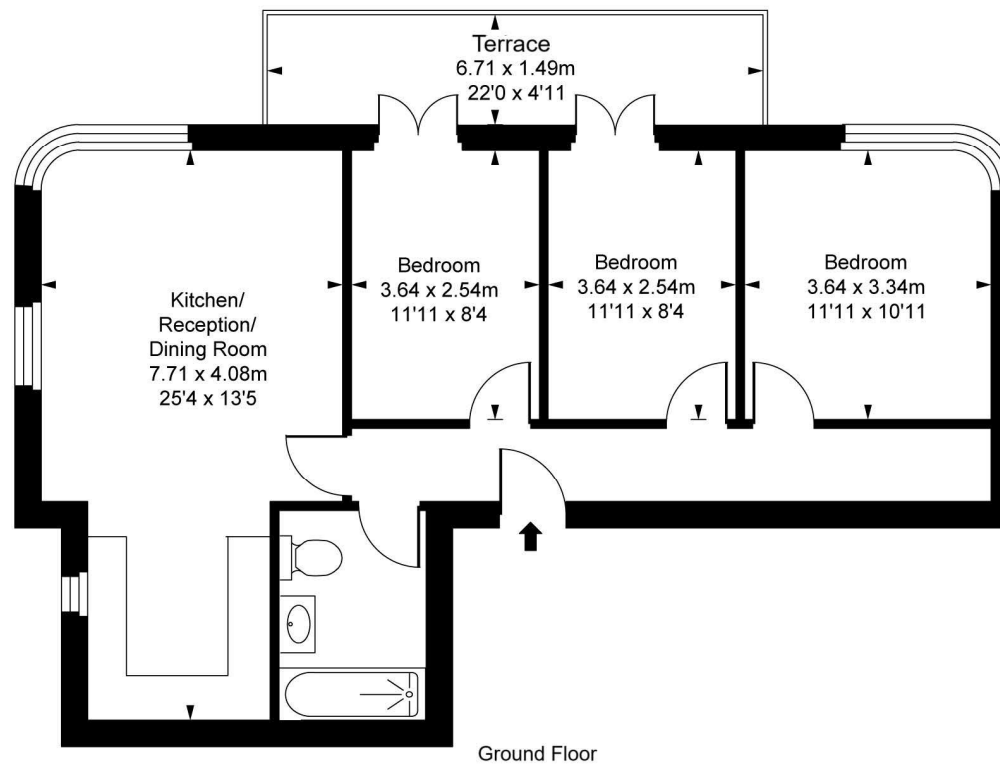
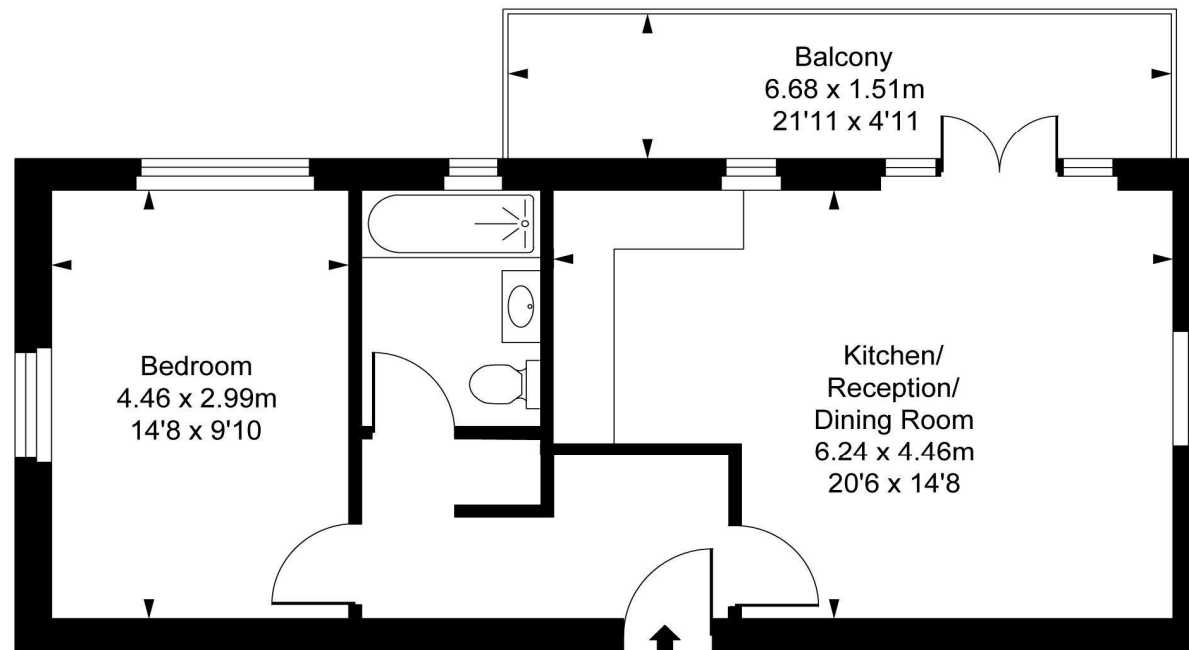


ILLUSTRATION FOR IDENTIFICATION PURPOSES ONLY
ALL MEASUREMENTS AND AREA FIGURES SUPPLIED BY OTHERS, ACCURACY IS NOT GUARANTEED.
THIS PLAN MUST NOT BE REPRODUCED BY ANY OTHER PERSON WITHOUT PERMISSION

Apartment Three:

Foyle Court,
Hollyfield Road, KT5
Approximate Gross Internal Area
50.31 sq m / 542 sq ft

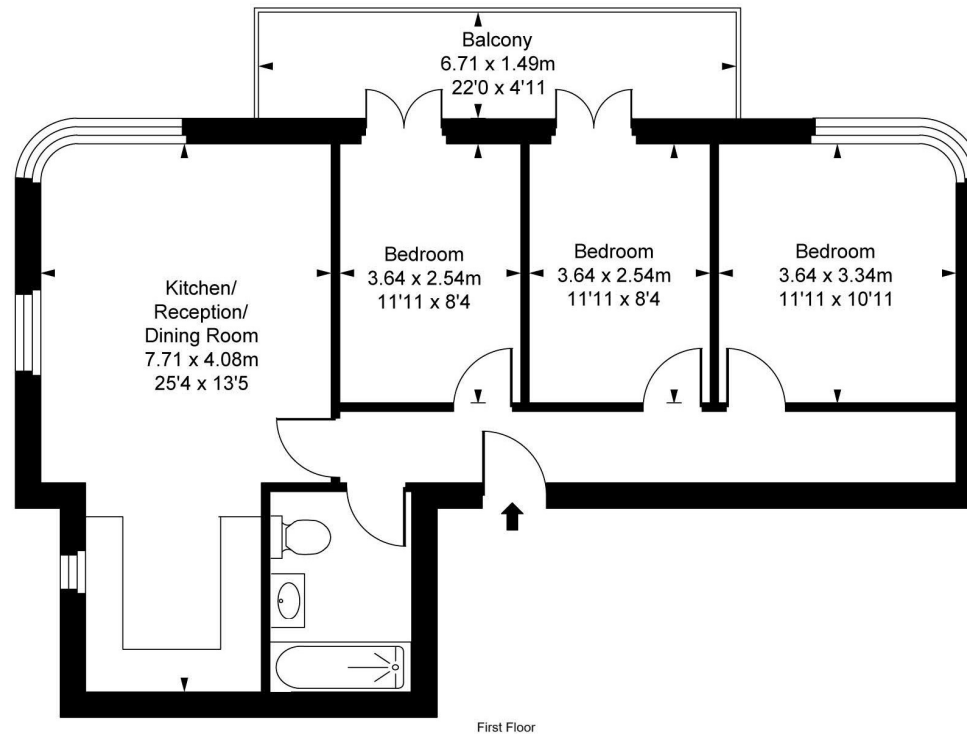


First Floor

ILLUSTRATION FOR IDENTIFICATION PURPOSES ONLY
ALL MEASUREMENTS AND AREA FIGURES SUPPLIED BY OTHERS, ACCURACY IS NOT GUARANTEED.
THIS PLAN MUST NOT BE REPRODUCED BY ANY OTHER PERSON WITHOUT PERMISSION

Apartment Four:

Foyle Court,
Hollyfield Road, KT5
Approximate Gross Internal Area
74.50 sq m / 802 sq ft

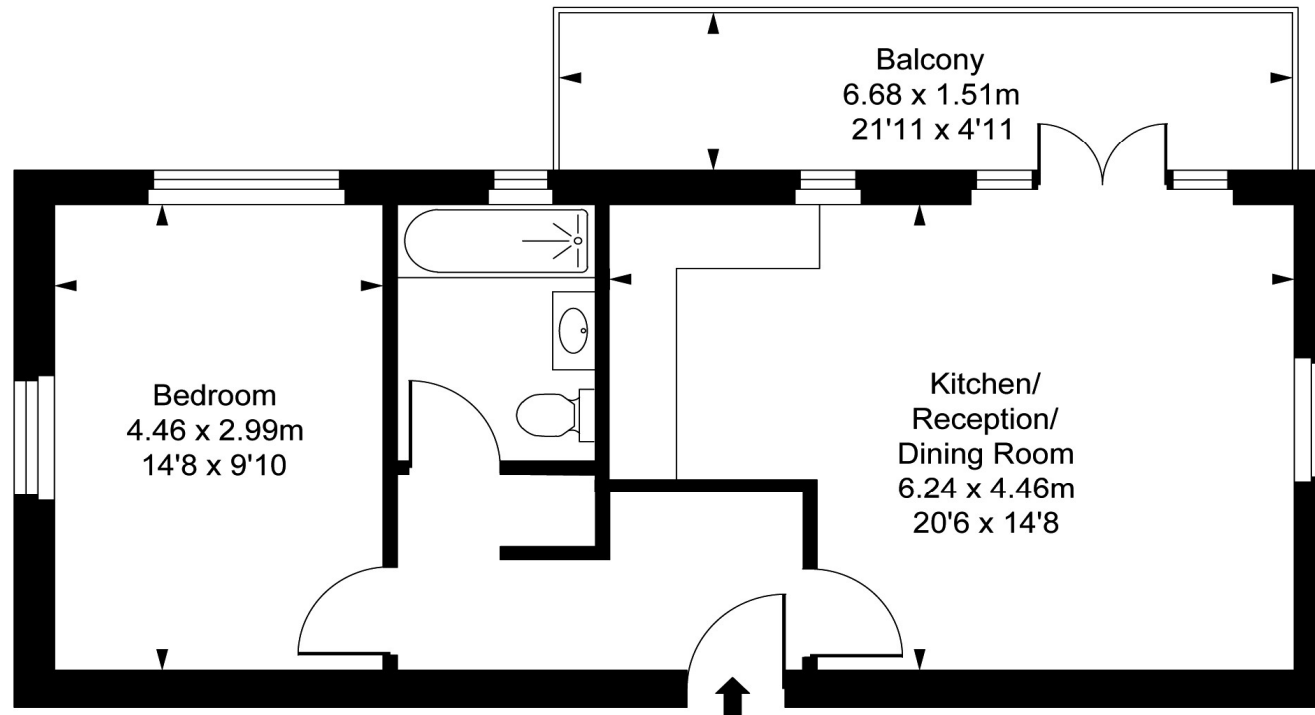


First Floor

ILLUSTRATION FOR IDENTIFICATION PURPOSES ONLY.
ALL MEASUREMENTS AND AREA FIGURES SUPPLIED BY OTHERS. ACCURACY IS NOT GUARANTEED.
THIS PLAN MUST NOT BE REPRODUCED BY ANY OTHER PERSON WITHOUT PERMISSION

Apartment Five:

Foyle Court,
Hollyfield Road, KT5
Approximate Gross Internal Area
50.31 sq m / 542 sq ft



Second Floor

ILLUSTRATION FOR IDENTIFICATION PURPOSES ONLY
ALL MEASUREMENTS AND AREA FIGURES SUPPLIED BY OTHERS, ACCURACY IS NOT GUARANTEED.
THIS PLAN MUST NOT BE REPRODUCED BY ANY OTHER PERSON WITHOUT PERMISSION

Apartment Six:

Foyle Court,
 Hollyfield Road, KT5
 Approximate Gross Internal Area
 74.50 sq m / 802 sq ft

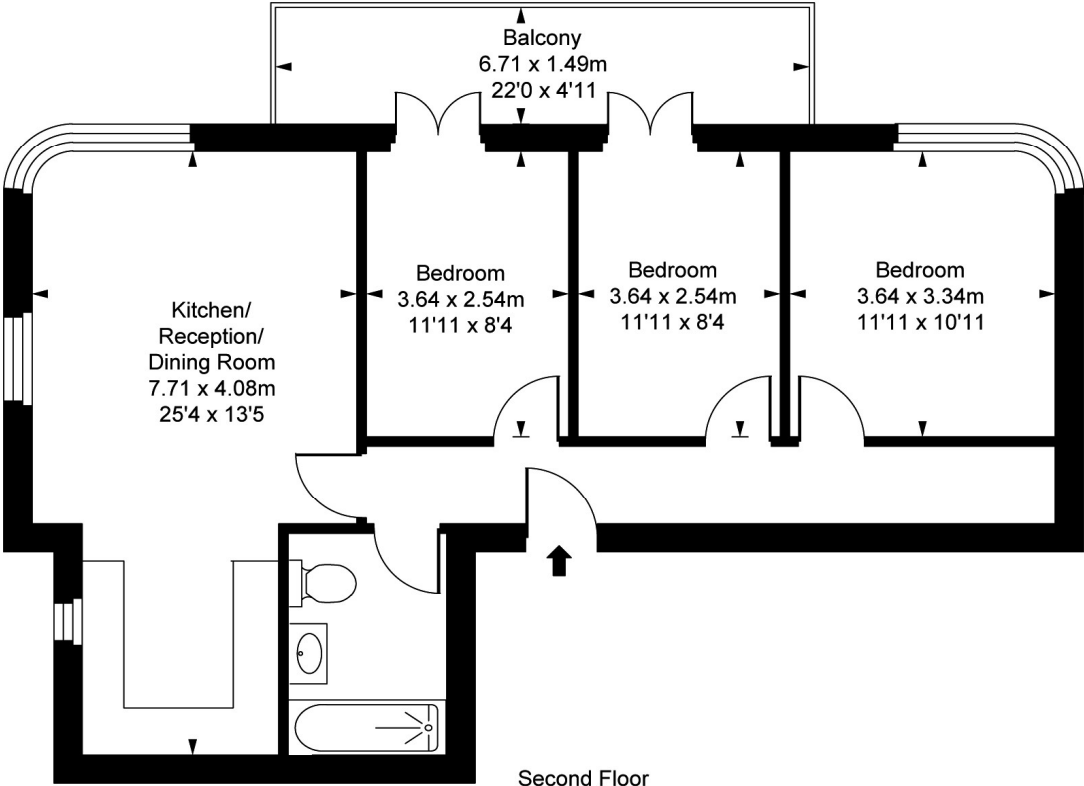
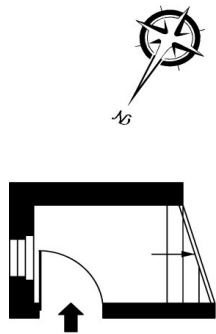


ILLUSTRATION FOR IDENTIFICATION PURPOSES ONLY
 ALL MEASUREMENTS AND AREA FIGURES SUPPLIED BY OTHERS, ACCURACY IS NOT GUARANTEED.
 THIS PLAN MUST NOT BE REPRODUCED BY ANY OTHER PERSON WITHOUT PERMISSION

Apartment Seven:

Foyle Court,
Hollyfield Road, KT5
Approximate Gross Internal Area
85.43 sq m / 920 sq ft



Second Floor Entrance
Approximate Gross Internal Area
2.65 sq m / 29 sq ft

Third Floor
Approximate Gross Internal Area
82.78 sq m / 891 sq ft

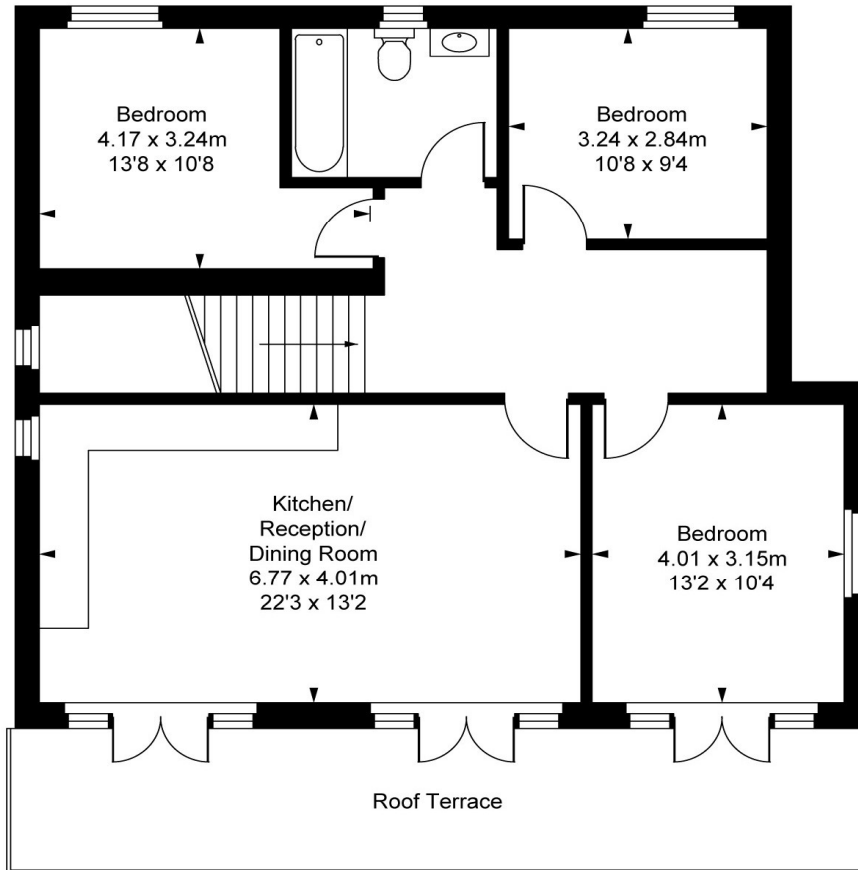


ILLUSTRATION FOR IDENTIFICATION PURPOSES ONLY
ALL MEASUREMENTS AND AREA FIGURES SUPPLIED BY OTHERS, ACCURACY IS NOT GUARANTEED.
THIS PLAN MUST NOT BE REPRODUCED BY ANY OTHER PERSON WITHOUT PERMISSION

Specification:

KITCHENS

Howdens Satin finish units, soft close doors
Composite worktops
Under cabinet lighting
Stainless steel sink with chrome mixer tap
Work top 100mm upstand
Induction hob, oven and extractor
Integrated dishwasher and fridge freezer

ENSUITE & BATHROOMS

White sanitaryware
Chrome taps and shower
Walls and floors fully tiled, alcove in bath area.

INTERNAL FINISHES

Emulsion painted walls and ceilings
Ceramic wall and floor tiles in bathrooms
Laminate flooring to kitchen and living areas

INTERNAL FINISHES

Emulsion painted walls and ceilings
Ceramic wall and floor tiles in bathrooms
Laminate flooring to kitchen and living area

ELECTRICS/LIGHTING

LED light fittings to living
room/kitchen/bathroom/hall
TV, BT and Satellite points
Brushed Chrome electrical faceplates throughout .

BEDROOMS

Carpets to all bedrooms

GENERAL/SECURITY

Cycle storage Racks
Video entry to all apartments

Specification is for guidance only and may be subject to change

PRICE LIST

Apartment	Floor	Size (M)	Size (Sq ft)	Beds	Amenity (M)	Asking Price
1	Ground	50.31	542	1	10	£375,000
2	Ground	74.50	802	3	10	£599,950
3	First	50.31	542	1	10	RESERVED
4	First	74.50	802	3	10	£599,950
5	Second	50.31	542	1	10	£375,000
6	Second	74.50	802	3	10	£599,950
7	Third	85.43	920	3	20	OIEO £599,950

All images and floor plans in this brochure are for illustration purposes only



S&B

Stack and Bonner

Land and New Homes