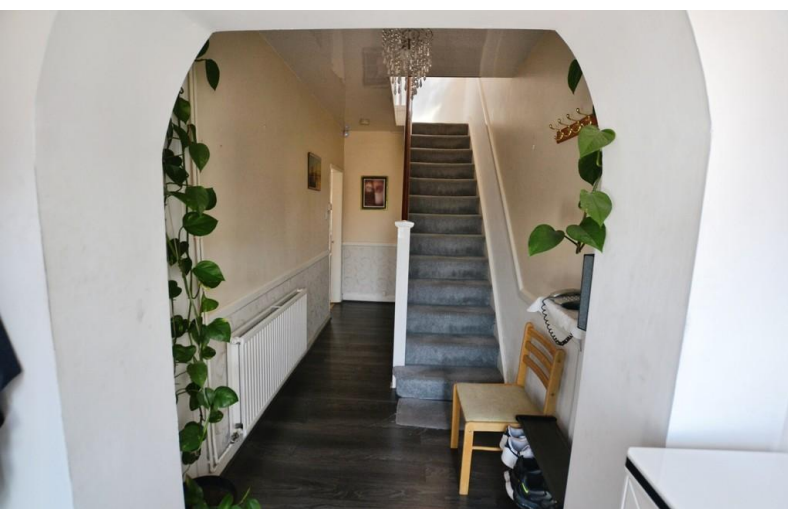


FOR SALE



Buckminster Road, Leicester

3 Bedrooms, 1 Bathroom, Semi Detached House

Asking Price Of £290,000

MARTIN&CO



FULL DESCRIPTION We are pleased to launch to the market this deceptively spacious three bedroom semi-detached family home off Groby Road..

- **Three Bedroom Semi Detached House**
- **Located Off Groby Road**
- **Lounge**
- **Kitchen / Diner**
- **Three Bedrooms**
- **Family Bathroom**
- **Off Road Parking**

%epcGraph_c_1_331%

Accommodation comprises in brief of; entrance hall, lounge, kitchen diner, three bedrooms and a family bathroom.

To the exterior the property enjoys a low maintenance rear garden and to the front there is off road parking.

Get in touch to enquire about viewing this wonderful family home.

HALLWAY Access from the front driveway and leads to stairs and to the down stairs rooms.

LOUNGE 12' 0" x 10' 7" (3.66m x 3.23m) Bay window to the front and doors to the kitchen diner. Radiator & fire place.

KITCHEN/DINER 16' 7" x 14' 10" (5.05m x 4.52m) Fitted kitchen comprising of wall and base units, work surfaces and a sink drainer unit with splash back tiles. Offers space for appliances. Dining area has doors to the lounge and rear garden.

BEDROOM 12' 3" x 9' 2" (3.73m x 2.79m) Window to the front. Fitted Wardrobes. Radiator.

BEDROOM 12' 9" x 10' 9" (3.89m x 3.28m) Window to



the rear over looking the garden, fitted wardrobes and radiator.

BEDROOM 11' 5" x 5' 10" (3.48m x 1.78m) Window to the front, fitted cupboard and radiator.

BATHROOM 7' 9" x 5' 10" (2.36m x 1.78m) Shower cubicle, tiled surround, W/C and a hand wash basin.

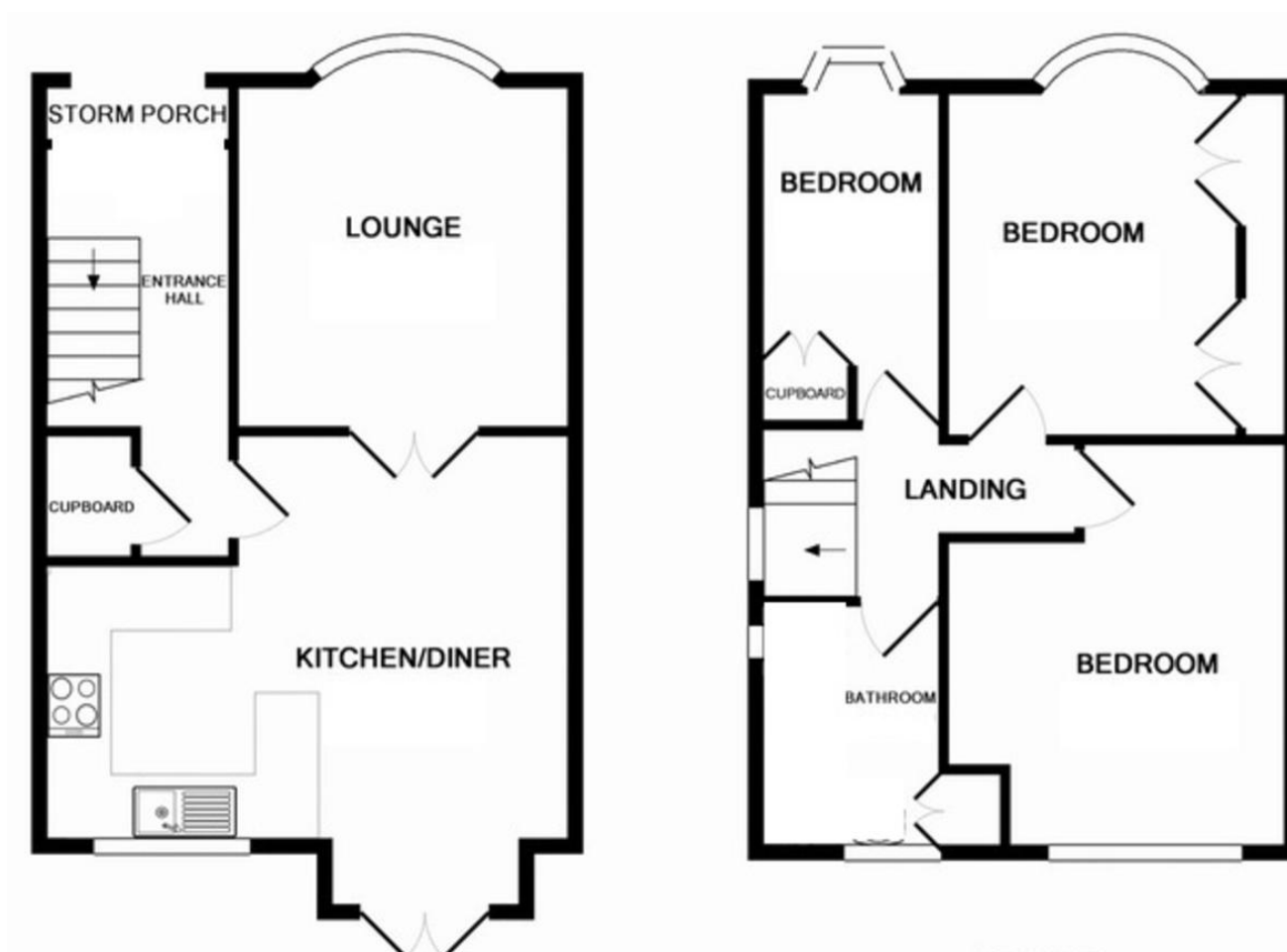
OUTSIDE Rear Garden

Easy to maintain garden consisting of patio and a lawn.

Parking

Off road parking to the front.





Martin & Co Leicester

162 Narborough Road • Leicester • LE3 0BW
T: 0116 204 4920 • E: leicester@martinco.com

0116 204 4920
<http://www.martinco.com>



Accuracy: References to the Tenure of a Property are based on information supplied by the Seller. The Agent has not had sight of the title documents. A Buyer is advised to obtain verification from their Solicitor. Items shown in photographs including but not limited to carpets, fixtures and fittings are not included unless specifically mentioned within the sales particulars. They may however be available by separate negotiation. Buyers must check the availability of any property and make an appointment to view before embarking on any journey to see a property. No person in the employment of the agent has any authority to make any representation about the property, and accordingly any information given is entirely without responsibility on the part of the agents, sellers(s) or lessors(s). Any property particulars are not an offer or contract, nor for m part of one. **Sonic / laser Tape:** Measurements taken using a sonic / laser tape measure may be subject to a small margin of error. **All Measurements:** All Measurements are Approximate. **Services Not tested:** The Agent has not tested any apparatus, equipment, fixtures and fittings or services and so cannot verify that they are in working order or fit for the purpose. A Buyer is advised to obtain verification from their Solicitor or Surveyor.