



Thirns Rigg, 10 Silver Street, Reeth

Offers in the Region of £385,000

Located close to the centre of the highly regarded upper dales village of Reeth, Thirns Rigg is a generous mid terraced cottage which retains a character feel with exposed beams and impressive fireplaces. Well presented throughout, the layout comprises a large living room with log burning stove, a dining room with inglenook fireplace and a modern kitchen with dining area to the ground floor, with the first floor having four bedrooms, the master being ensuite, and the house bathroom. Externally there is a small South facing forecourt garden to the front, and to the rear there is private parking, a low maintenance patio garden and two useful stores. An early viewing is strongly recommended!

21 Market Place, Richmond, North Yorkshire, DL10 4QG

Thirns Rigg, 10 Silver Street, Reeth

Located close to the centre of the highly regarded upper dales village of Reeth, Thirns Rigg is a generous mid terraced cottage which retains a character feel with exposed beams and impressive fireplaces. Well presented throughout, the layout comprises a large living room with log burning stove, a dining room with inglenook fireplace and a modern kitchen with dining area to the ground floor, with the first floor having four bedrooms, the master being ensuite, and the house bathroom. Externally there is a small South facing forecourt garden to the front, and to the rear there is private parking, a low maintenance patio garden and two useful stores. An early viewing is strongly recommended!

Dining Room:

The large dining room is full of character having a beamed ceiling and a most impressive inglenook fireplace with a log burning stove. With ample space for formal dining there is a upvc double glazed part glazed door to the front of the property a upvc double glazed window with stone cill.



Living Room:

The generous living room features exposed beams, recessed shelving and a fireplace housing a log burning stove. There is a TV point and a upvc double glazed window with a stone cill.



Kitchen:

Fitted with a range of wall and base units with complimenting butchers block effect countertops.

Integrated into the units are a Bosch electric cooker and hob. There is space for a fridge freezer, plumbing for a washing machine and a upvc double glazed window to the rear of the property.



Dining Area:

A great space for more relaxed dining and having a upvc double glazed window and a half glazed upvc door to the rear of the property.



First Floor Landing:

Having a upvc double glazed window to the rear with views of Fremington Edge.

Bedroom 1:

A large double bedroom with a walk in wardrobe and a upvc double glazed window to the front.



The Ensuite is fitted with a shower enclosure with an electric shower, a WC and a wash hand basin.

Bedroom 2:

A double bedroom with a upvc double glazed window to the front.



Bedroom 3:

A double bedroom with a upvc double glazed window to the rear with a view of Fremington Edge.



Bedroom 4:

Currently used as a hobbycraft room and having a upvc double glazed window to the front of the property.

Bathroom:

The well appointed bathroom is fitted with a corner bath, a WC, a wash hand basin and a shower enclosure housing a Mira electric shower.



External

The property sits back from the road behind a low stone wall and a South facing gravelled forecourt garden with planted borders.



To the rear there is a low maintenance patio garden and private parking. There are two useful stores.



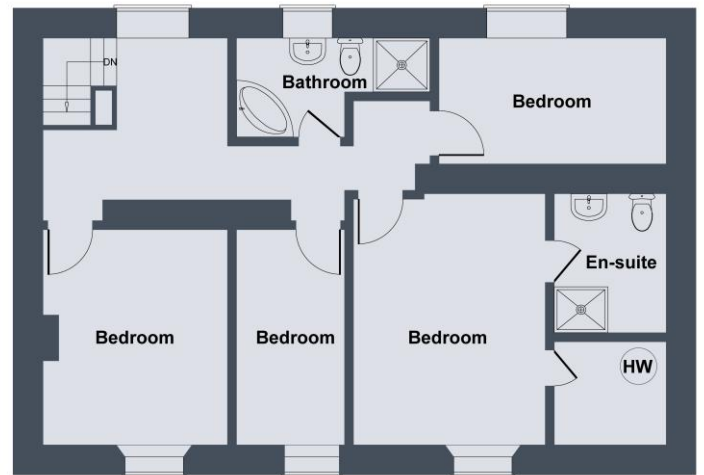
Additional Information.

The postcode is DL11 6SP and the Council Tax Band is E. The property has electric heating.

Thirn Riggs, Reeth



GROUND FLOOR



FIRST FLOOR

SKETCH PLAN FOR ILLUSTRATIVE PURPOSES ONLY

All measurements walls, doors, windows, fittings and appliances, their sizes and locations, are approximate only. They cannot be regarded as being a representation by the seller, nor their agent.

Produced by Potterplans Ltd. 2025