



## Organ Makers Cottage North Lyminge Lane, Lyminge - CT18 8EE

Guide Price £475,000



Approximate Gross Internal Area = 114 sq m / 1230 sq ft

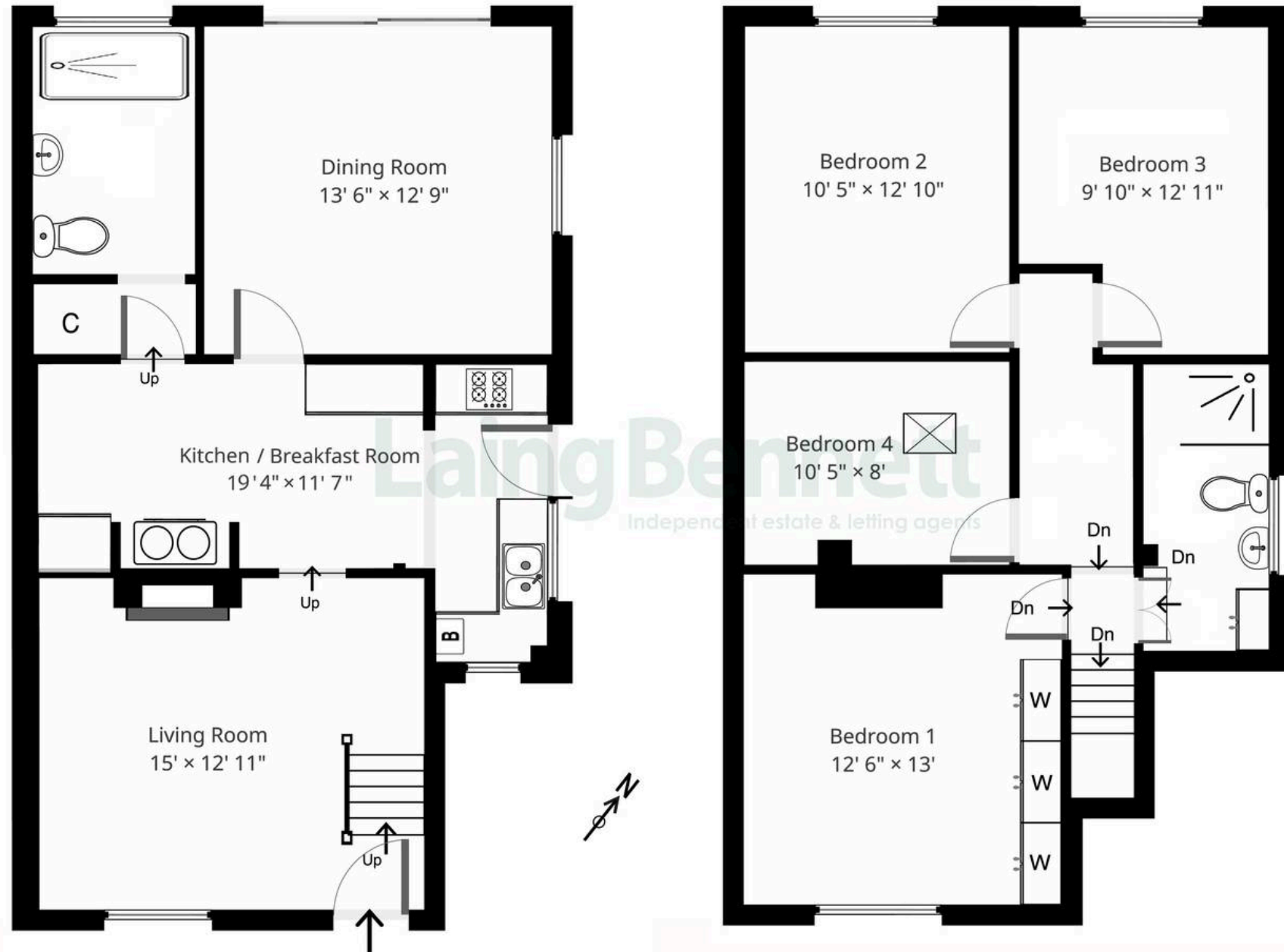


Illustration for identification purposes only, measurements are approximate, not to scale. Outbuildings are not shown in actual location.



## Organ Makers Cottage North Lyminge Lane

Lyminge, Folkestone

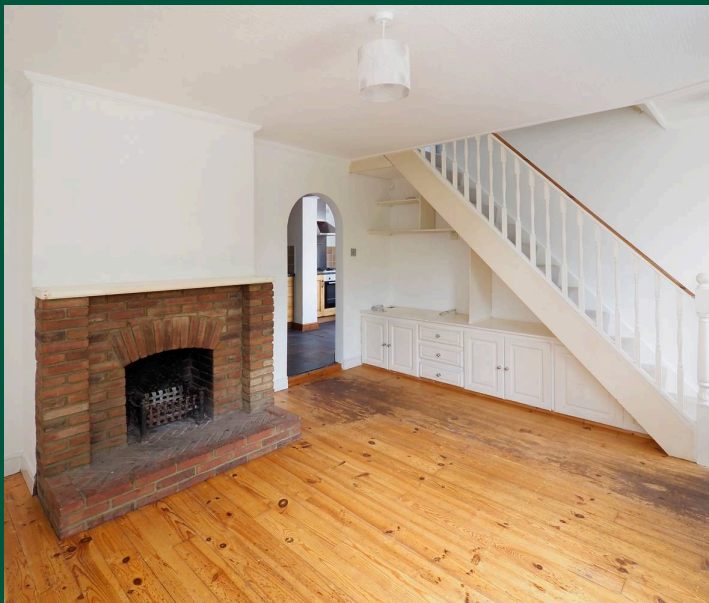
A charming period semi-detached house with large rear extension, situated in North Lyminge a sought after area of the village of Lyminge. The accommodation comprises: ground floor - living room, kitchen/breakfast room, dining room and shower room. First floor - landing, four bedrooms and bathroom. Outside: frontage, driveway for two vehicles and enclosed good sized rear garden. A spacious home in a desirable location.

Council Tax band: C

Tenure: Freehold

EPC Energy Efficiency Rating: D

EPC Environmental Impact Rating: E







## Laing Bennett

Laing Bennett Ltd, The Estate Office, 8 Station Road – CT18 8HP

01303 863393

[info@laingbennett.co.uk](mailto:info@laingbennett.co.uk)

[www.laingbennett.co.uk/](http://www.laingbennett.co.uk/)

DISCLAIMER – These details are for guidance only and do not form part of an offer or contract. Measurements are approximate. Laing Bennett Ltd and the Vendor/Landlord accept no liability. Services and appliances are untested. Applicants must make their own checks. Items shown may not be included. No staff have authority to give warranties.