



LESLEY  
GREAVES  
estate & letting agents

# £380,000-£400,000

GUIDE PRICE

JESSOPS LANE  
GEDLING

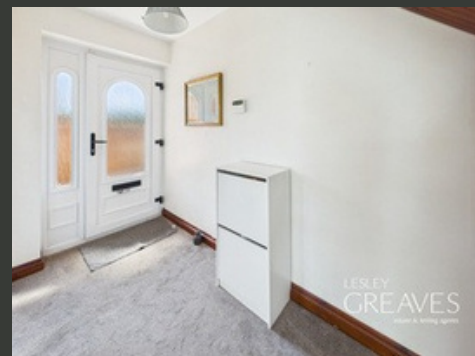
- FOUR BEDROOMS
- EN SUITE
- SUNROOM
- MODERN KITCHEN
- FOUR PIECE BATHROOM
- DRIVEWAY
- EPC D



LESLEY  
GREAVES  
estate & letting agents



LESLEY  
GREAVES  
estate & letting agents



LESLEY  
GREAVES  
estate & letting agents



LESLEY  
GREAVES  
estate & letting agents



LESLEY  
GREAVES  
estate & letting agents

# Spacious Four-Bedroom Home in a Prime Location - No Chain

THIS SPACIOUS FOUR DOUBLE BEDROOM PROPERTY IS OFFERED TO THE MARKET WITH NO UPWARD CHAIN AND IS LOCATED IN A HIGHLY SOUGHT-AFTER RESIDENTIAL AREA, JUST A SHORT DISTANCE FROM EXCELLENT SCHOOLS, LOCAL AMENITIES, GEDLING COUNTRY PARK AND REGULAR BUS ROUTES INTO THE CITY CENTRE.

YOU ARE WELCOMED BY A BRIGHT ENTRANCE HALLWAY PROVIDING IMMEDIATE ACCESS TO A MODERN KITCHEN, COMPLETE WITH AN INTEGRATED OVEN AND HOB AND SPACE FOR ADDITIONAL APPLIANCES. THE SPACIOUS LIVING ROOM SEAMLESSLY CONNECTS TO A LIGHT-FILLED SUNROOM, WITH PATIO DOORS OPENING ONTO THE REAR GARDEN. FROM THE LIVING ROOM, AN INNER HALLWAY LEADS TO TWO DOUBLE

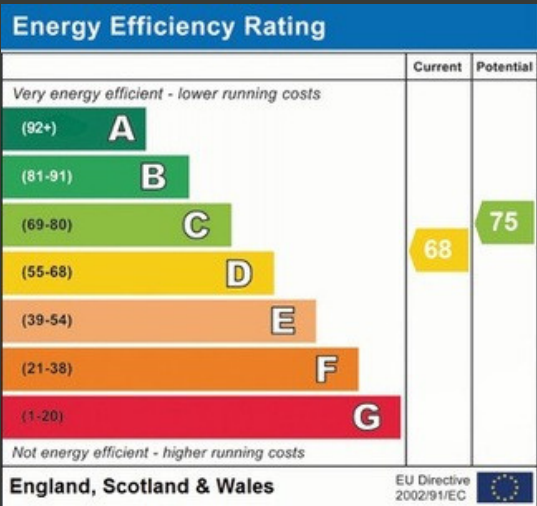
## BEDROOMS

ONE FEATURING FITTED WARDROBES AND THE OTHER OFFERING FLEXIBILITY TO BE USED AS A DINING ROOM ALONG WITH A STYLISH FAMILY BATHROOM WITH A SEPARATE SHOWER ENCLOSURE

UPSTAIRS, THERE ARE TWO FURTHER DOUBLE BEDROOMS, INCLUDING A SPACIOUS MAIN BEDROOM WITH BUILT-IN STORAGE AND A PRIVATE EN-SUITE SHOWER ROOM, OFFERING A PEACEFUL RETREAT.

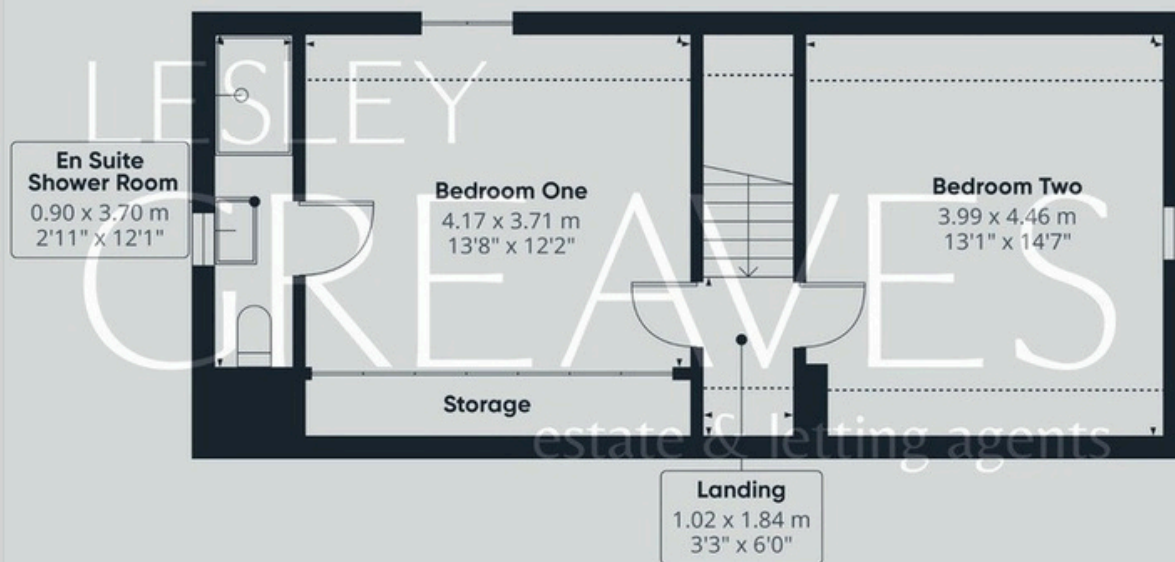
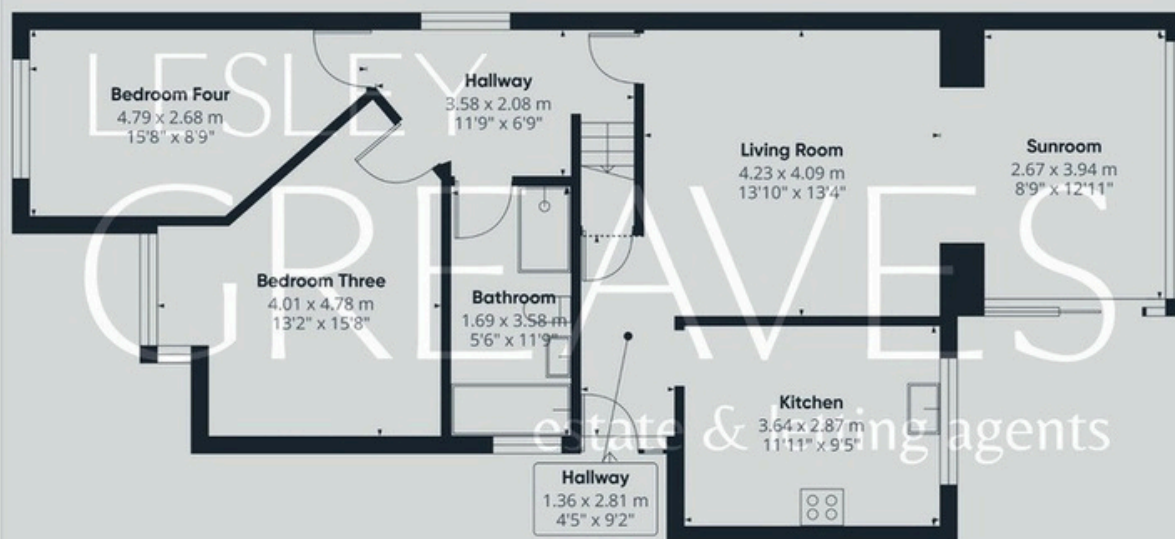
OUTSIDE, THE PROPERTY BOASTS A MATURE, PRIVATE REAR GARDEN WITH BOTH PATIO AND LAWNED AREA PERFECT FOR RELAXING OR ENTERTAINING. A DRIVEWAY PROVIDES AMPLE OFF-STREET PARKING, WITH GATED SIDE ACCESS TO THE REAR GARDEN.

- FREEHOLD
- COUNCIL TAX; BAND D
- LOCAL AUTHORITY; GEDLING BOROUGH COUNCIL
- MEASUREMENTS; 130 SQ METERS









## Lesley Greaves Estate & Lettings Agents

20 Main Road ,Gedling, Nottingham, NG4 3HP

0115 987 7337

[sales@lesleygreaves.co.uk](mailto:sales@lesleygreaves.co.uk)