



9 Aspen Court, Rendlesham

Guide Price £160,000





9 Aspen Court

Rendlesham, Woodbridge

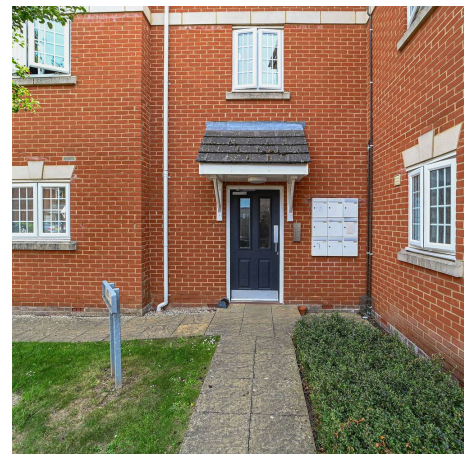
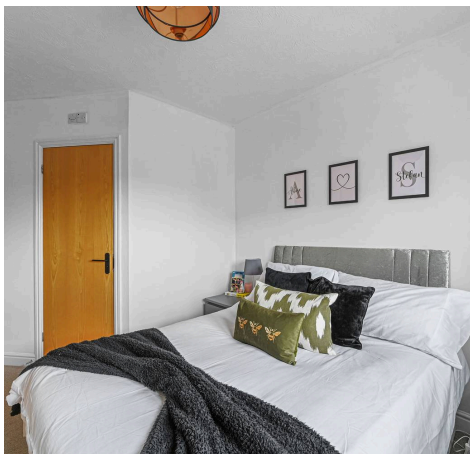
Well-presented top floor apartment in quiet Rendlesham location near Woodbridge. 2 beds, 2 baths, parking. Close to amenities and schools. Council Tax band: A

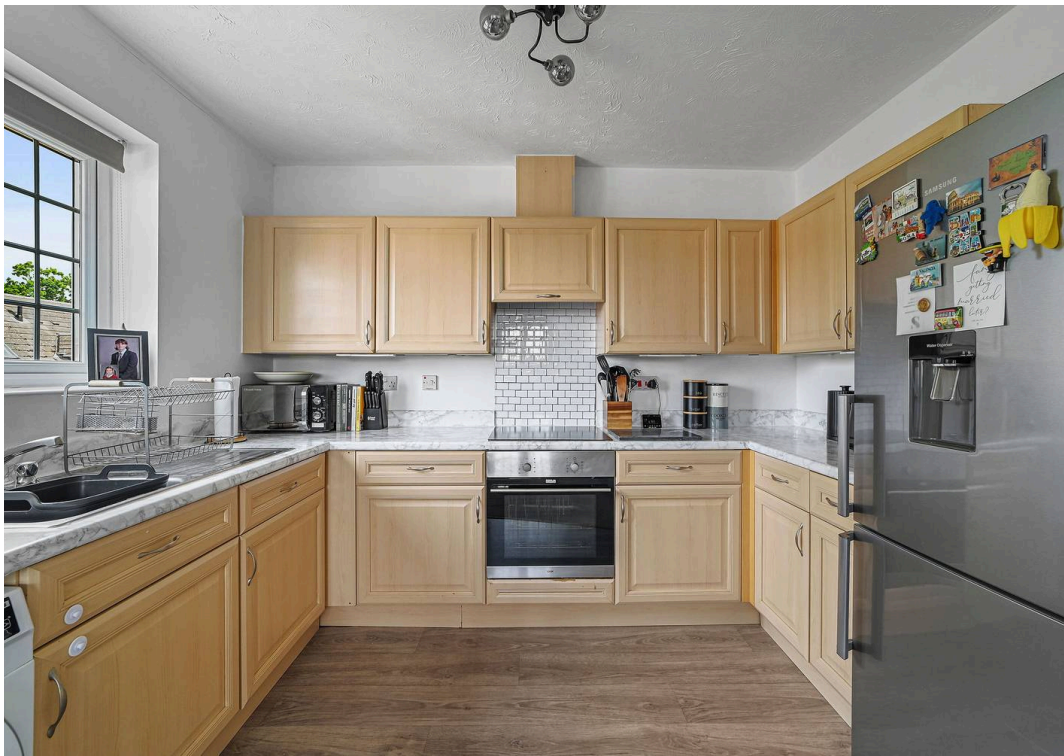
Tenure: Leasehold

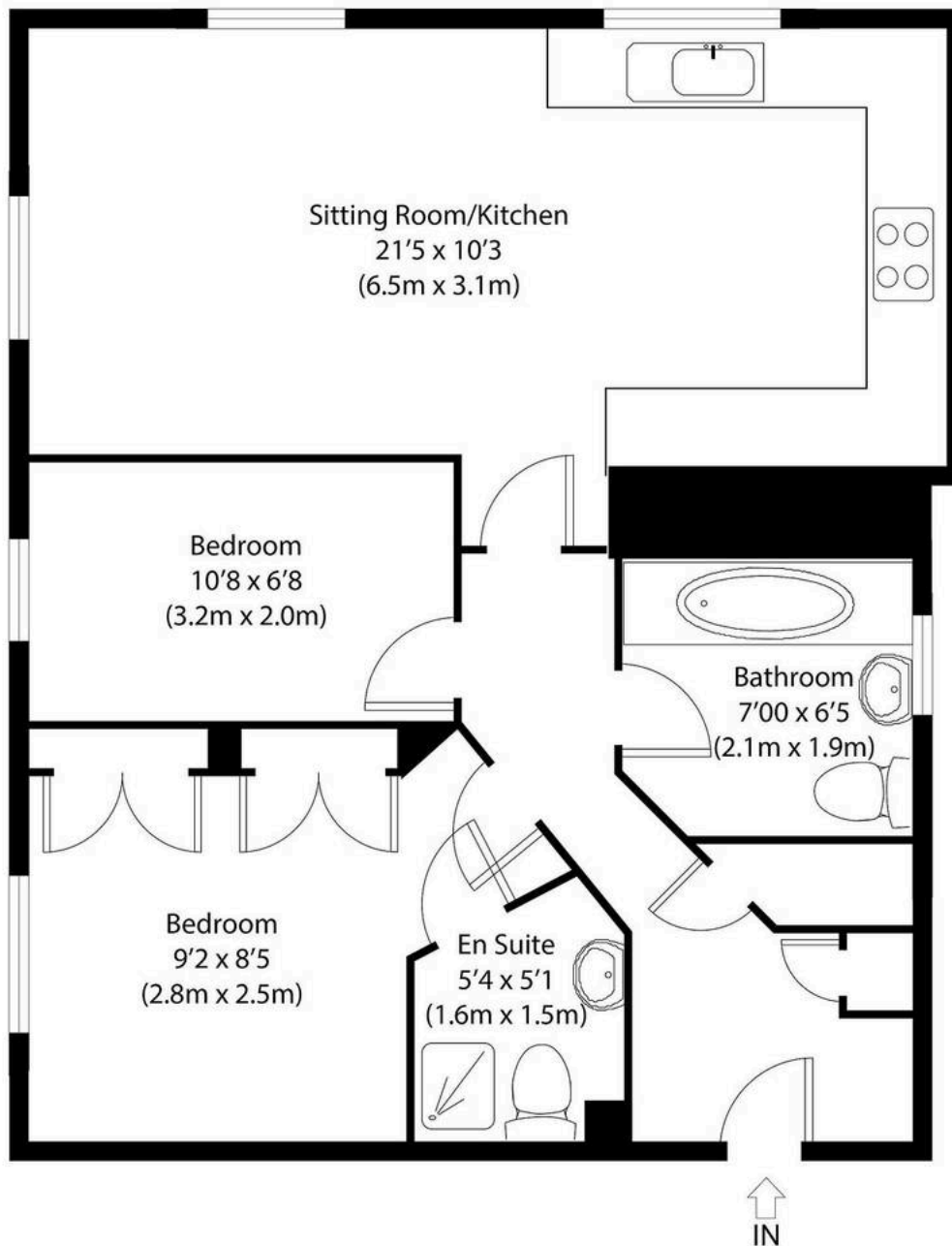
EPC Energy Efficiency Rating: C

EPC Environmental Impact Rating: C

- Well-Presented Top Floor Apartment
- Spacious Accommodation
- Modern Open-Plan Living
- Ensuite & Bathroom
- Allocated Parking
- Excellent Storage
- 999-year lease from 2006 with 980 years remaining
- Convenient Local Amenities







Second Floor
Approximate Gross Internal Area
550 sq ft (42 sq m)

Disclaimer: Floorplan measurements are approximate and are for illustrative purposes only. While we do not doubt the floor plan accuracy and completeness, you or your advisors should conduct a careful, independent investigation of the property in respect of monetary valuation. copyright www.photohausgroup.co.uk





Potters Estate Agents

Potters Estate Agents, 6 Market Hill – IP12 4LU

01394 447487 • enquiries@pottersestateagents.com • www.pottersestateagents.com/