

- Private Rear Garden
- Three Good Size Bedrooms
- Short Distance from Epping Central
- Available Immediately
- End of Terrace Location
- Bright and Spacious Layout

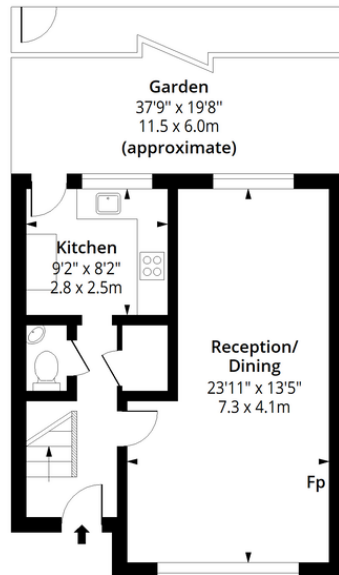
Located in tranquil Coopersale, this three bedroom, end of terrace house stands in an appealing position with private front and rear garden, a very short distance from shops and other amenities including good links to Epping from where the Central Line Station allows for access to the City and West End in approximately 45 minutes.

Stevenette

**64 Parklands
Coopersale, CM16 7RF
£1,750 pcm**

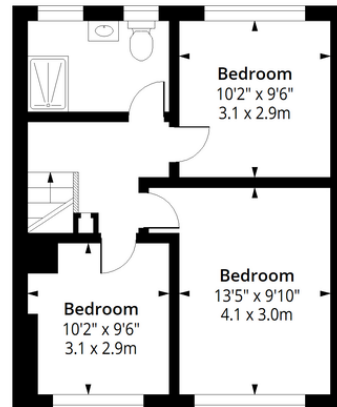
Parklands, CM16

Approx. Gross Internal Area 937 Sq Ft - 87.05 Sq M



Ground Floor

Floor Area 459 Sq Ft - 42.64 Sq M



First Floor

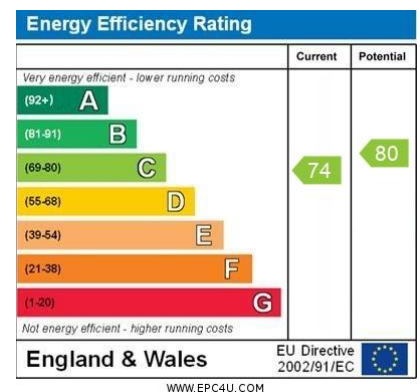
Floor Area 478 Sq Ft - 44.41 Sq M



Measured according to RICS IPMS2. Floor plan is for illustrative purposes only and is not to scale. Every attempt has been made to ensure the accuracy of the floor plan shown, however all measurements, fixtures, fittings and data shown are an approximate interpretation for illustrative purposes only. 1 sq m = 10.76 sq feet.

Date: 23/6/2025

Stevenette



5a Simon Campion Court, 232-234 High Street, Epping, Essex, CM16 4AU
 Tel: 01992 563090
 Email: lettings@stevenette.com



@StevenetteandCoLLP



@StevenetteandCo



The Property Ombudsman



Whilst every care has been taken in the preparation of these sales particulars, they are for guidance purposes only and no guarantee can be given as to the working condition of the various services and appliances. Measurements have been taken as accurately as possible but slight discrepancies may inadvertently occur. The agents have not tested appliances or central heating services. Interested applicants are advised to make their own enquiries and investigation before finalising their offer purchase.