





This two bedroom bungalow offers wonderful scope for improvement to create your dream family home, on a sizeable plot, situated in a much sought after residential area in Petersfield.

The property comprises of;

Large front garden with driveway parking for several vehicles. A detached single garage offers further parking/storage.

Entering the property there is a large entrance hallway leading to the various rooms throughout the property. On the right hand side entering the property is a large sitting room with fireplace and bay window.

There is a bathroom that sits opposite two double bedrooms with built in wardrobes.

The kitchen/breakfast room is generous in size and houses the gas fired boiler, and a door to the large rear garden.

The property would benefit from modernisation throughout and offers further scope to extend to create a substantial family home.

All mains services are connected.
Double glazed throughout
Council tax band D - £2232 per annum

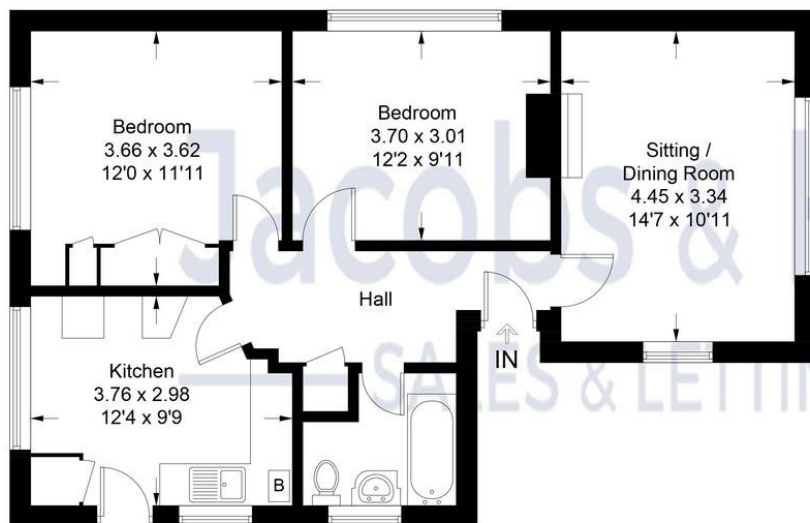
Please contact the vendors' sole agents, Jacobs & Hunt for further information.



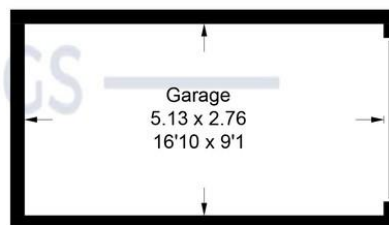


Tilmore Gardens, Petersfield

Approximate Gross Internal Area = 62.6 sq m / 674 sq ft
 Garage = 14.2 sq m / 153 sq ft
 Total = 76.8 sq m / 827 sq ft



Ground Floor



(Not Shown In Actual
Location / Orientation)

Illustration for identification purposes only,
 measurements are approximate, not to scale. (ID1216373)



26 Lavant Street, Petersfield,
 Hampshire, GU32 3EF

www.jacobshunt.co.uk
 01730 262744
properties@jacobshunt.co.uk

Agents Note: Whilst every care has been taken to prepare these particulars, they are for guidance purposes only. All measurements are approximate and for general guidance purposes only and whilst every care has been taken to ensure their accuracy, they should not be relied upon and potential buyers/tenants are advised to recheck the measurements



Zoopla **rightmove** **onTheMarket**