



**39 Longridge Road, Woodthorpe – NG5 4LA**

Guide Price **£300,000**

**DavidJames**  
the estate agent





## 39 Longridge Road

Woodthorpe, Nottingham

2 double bed extended detached bungalow within easy reach of Mapperley's amenities - ideal for those seeking single-level living!

Generous accommodation, an established garden, driveway and garage!

Council Tax band: D

Tenure: Freehold

- Extended detached bungalow
- Ideal for those seeking the benefits of single-storey living
- Within easy reach of Mapperley's nearby amenities
- Initial welcoming entrance hall with useful in-built storage
- Bright and spacious lounge and adjoining dining room
- Fitted breakfast kitchen with a range of integrated appliances
- Two double bedrooms (both with fitted wardrobes and storage)
- Shower room with a three-piece white suite
- Superb established garden with an initial patio seating area and excellent elevated views
- Driveway and garage providing off-street parking



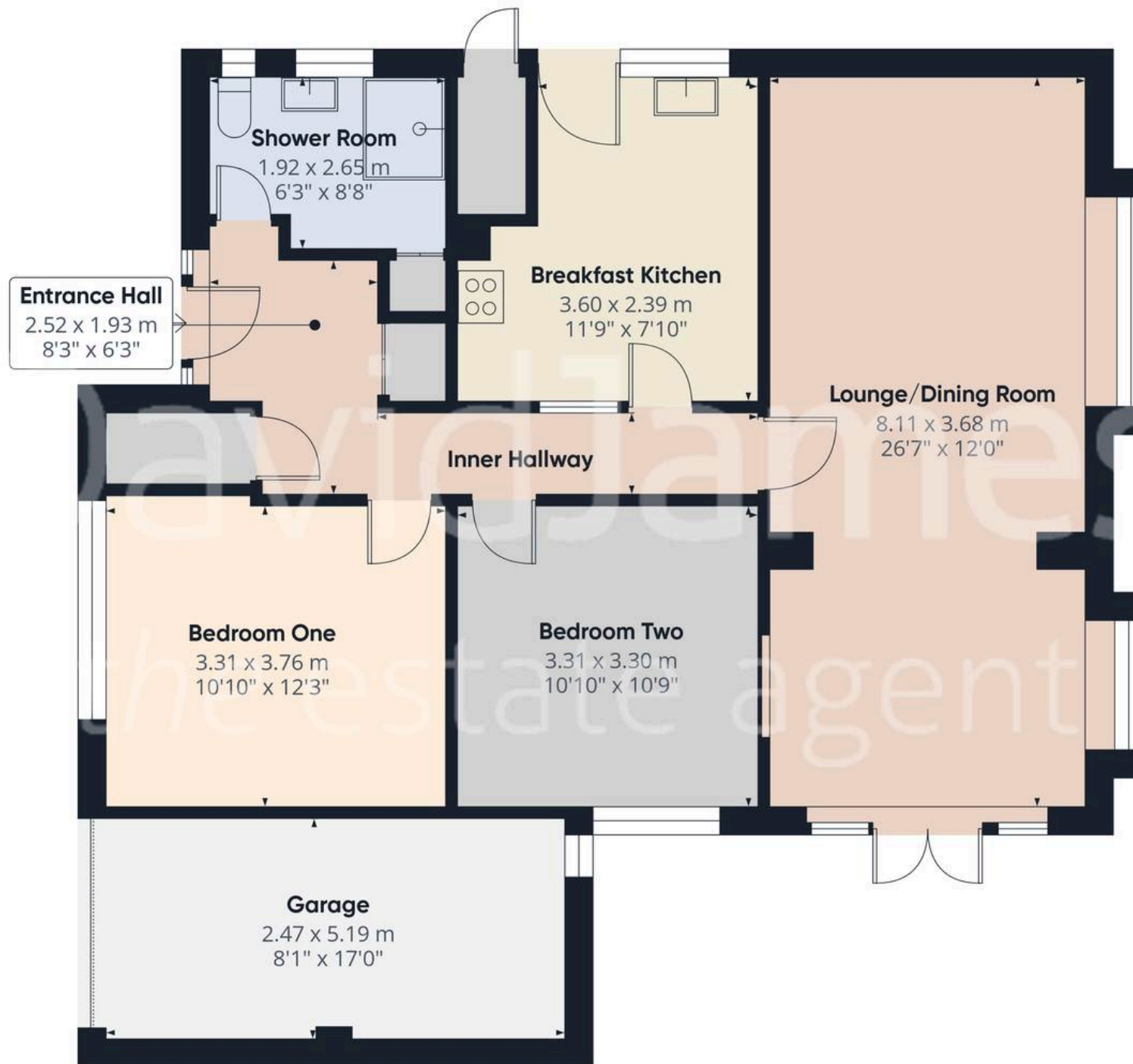












Approximate total area<sup>(1)</sup>

94.5 m<sup>2</sup>

1016 ft<sup>2</sup>

(1) Excluding balconies and terraces

Calculations reference the RICS IPMS 3C standard. Measurements are approximate and not to scale. This floor plan is intended for illustration only.

GIRAFFE360



## David James Estate Agents

David James Estate Agents, 45B Plains Road – NG3 5JU

0115 962 4213 • [mapperley@david-james.com](mailto:mapperley@david-james.com) • [www.david-james.com](http://www.david-james.com)

These particulars are produced in good faith and are set out as a general guide only. Measurements are approximate and floor plans are for illustrative purposes only. Services have not been tested. We have established professional relationships with third-party suppliers for the provision of services to Clients, details of which can be found on the property listing page on our website.