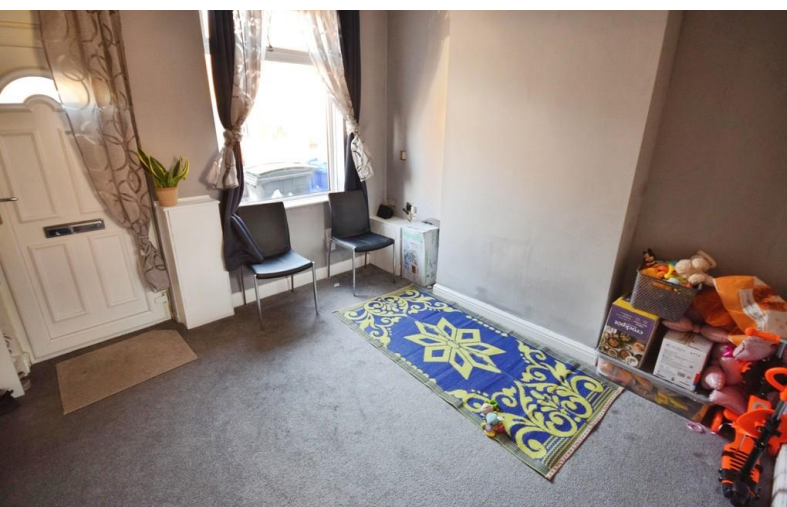


TO LET



St. Michaels Road, Tunstall

2 Bedrooms, 1 Bathroom, End Terraced House

£700 pcm



St. Michaels Road, Tunstall

End Terraced House,
2 bedroom, 1 bathroom

£700 pcm

Date available: 31st January 2026

Deposit: £807

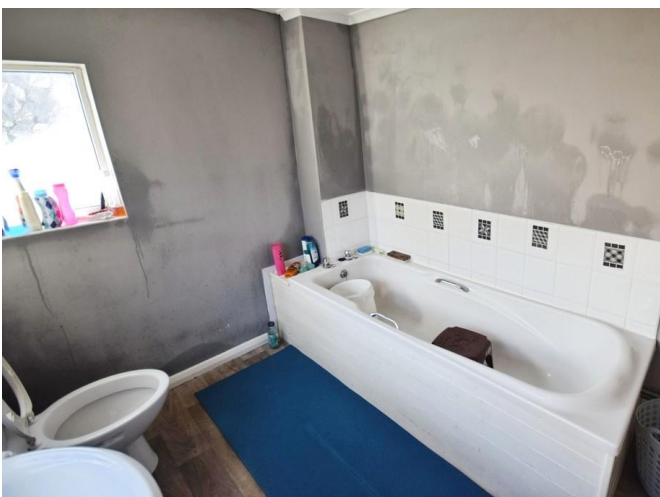
Unfurnished

Council Tax band: A

- End of terraced house
- Lounge
- Bathroom
- 2 Bedrooms
- Kitchen
- Council tax band A
- Walking distance from shops

Martin and co offer for rent this 2 bedroom end of terraced house located within walking distance from local shops and a short drive from Tunstall, Burslem and Hanley town centres. The property comprises an open plan lounge and kitchen, bathroom, and 2 bedrooms.

Energy Efficiency Rating		
	Current	Potential
Very energy efficient - lower running costs		
(92+) A		
(81-91) B		82
(69-80) C		
(55-68) D		
(39-54) E	48	
(21-38) F		



Martin & Co Stoke on Trent

12 Albion Street • Stoke-On-Trent • ST1 1QH

T: 01782 262880 • E: stokeontrent@martinco.com <http://www.martinco.com>

01782 262880



Accuracy: References to the Tenure of a Property are based on information supplied by the Seller. The Agent has not had sight of the title documents. A Buyer is advised to obtain verification from their Solicitor. Items shown in photographs including but not limited to carpets, fixtures and fittings are not included unless specifically mentioned within the sales particulars. They may however be available by separate negotiation. Buyers must check the availability of any property and make an appointment to view before embarking on any journey to see a property. No person in the employment of the agent has any authority to make any representation about the property, and accordingly any information given is entirely without responsibility on the part of the agents, sellers(s) or lessors(s). Any property particulars are not an offer or contract, nor for part of one. **Sonic / laser Tape:** Measurements taken using a sonic / laser tape measure may be subject to a small margin of error. **All Measurements:** All Measurements are Approximate. **Services Not tested:** The Agent has not tested any apparatus, equipment, fixtures and fittings or services and so cannot verify that they are in working order or fit for the purpose. A Buyer is advised to obtain verification from their Solicitor or Surveyor.