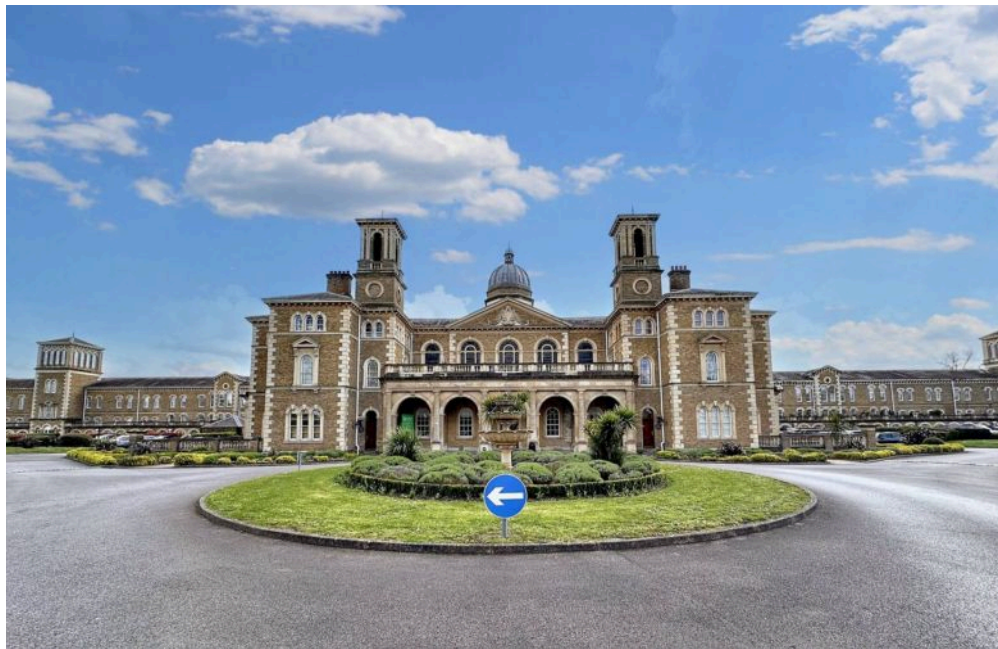


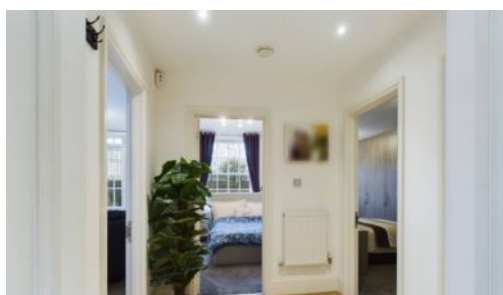
Flat 84 Princess Park Manor, Royal Drive, London
£2,250 pcm

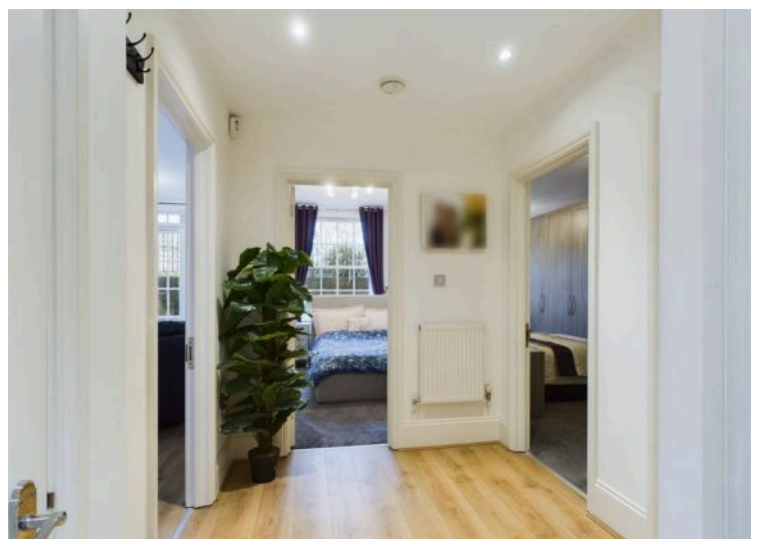
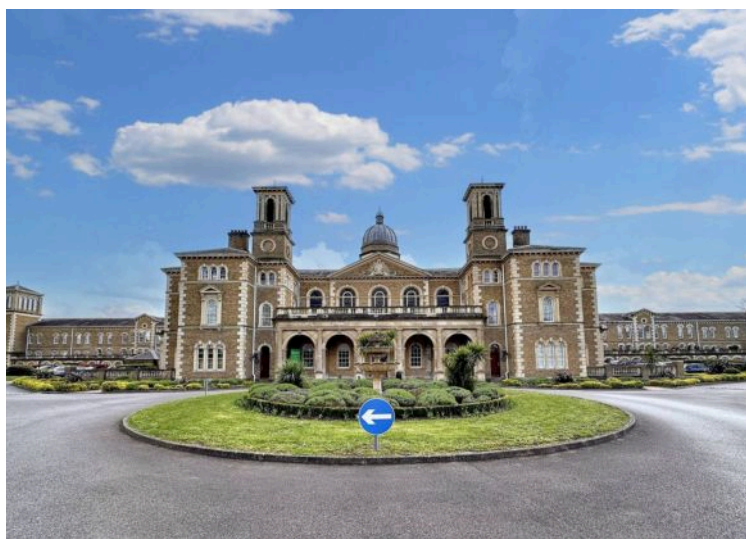
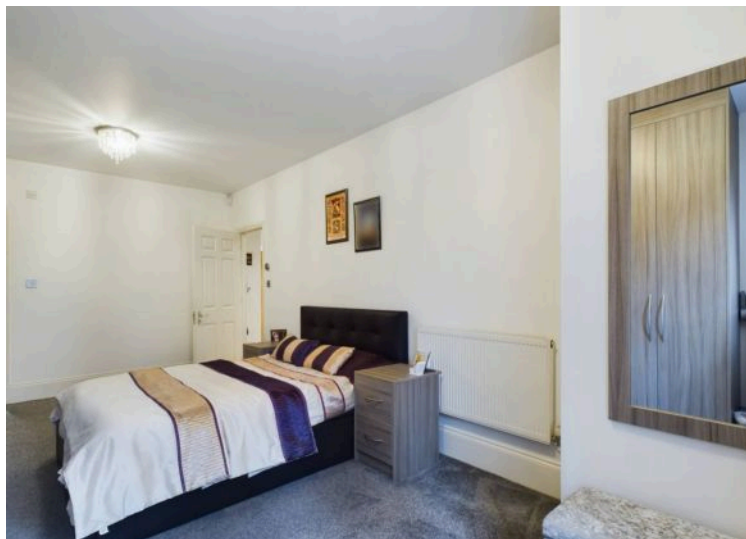
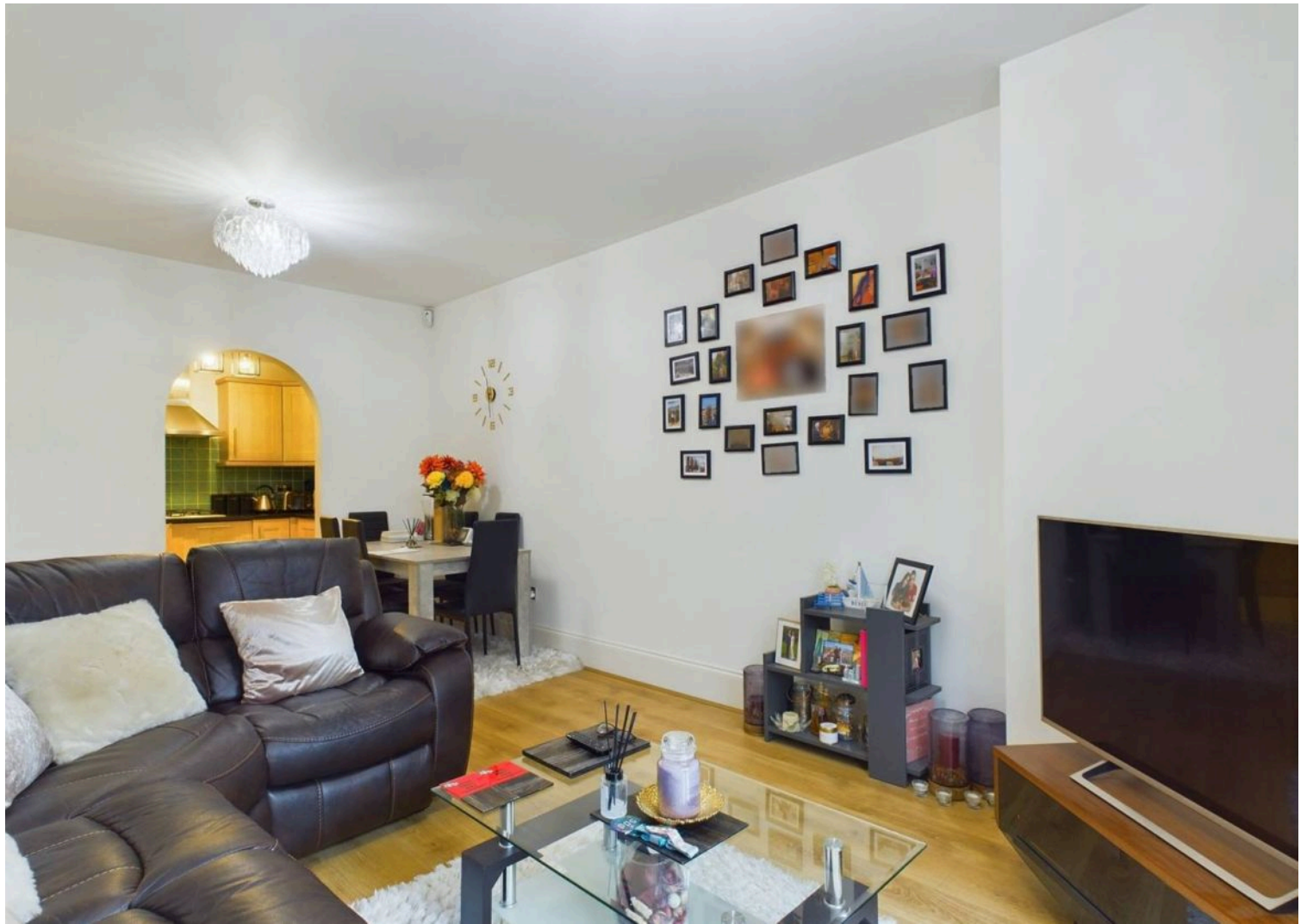
Oyster Properties are delighted to offer this modern and spacious 2-bedroom ground-floor apartment with a private enclosed patio, located in the prestigious Princess Park Manor.

The property boasts a bright and airy living room, a separate fully fitted kitchen, two generously sized double bedrooms, one benefiting from an en-suite bathroom and a stylish family bathroom. A well-sized private patio provides the perfect outdoor space to relax and unwind. Ideally situated close to a range of local amenities and green spaces, the development also offers residents access to extensive communal grounds, tennis courts, and an on-site gym. Excellent transport links are available via New Southgate Station and Arnos Grove Tube Station, ensuring easy access to Central London. The area is well-suited for families, with reputable schools nearby, including St Paul's CofE Primary School and Holly Park Primary School.

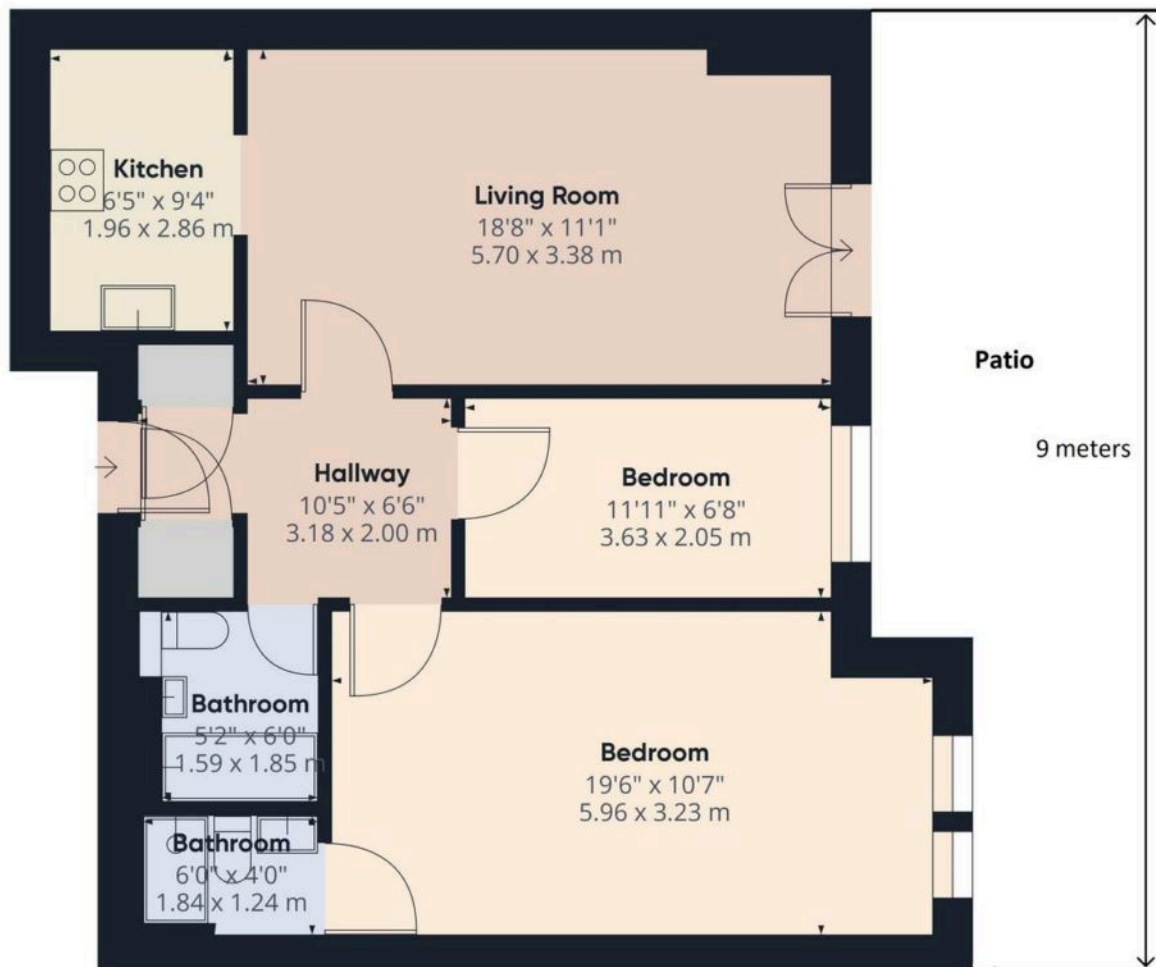


- 2 Bedroom Ground Floor Flat
- Property is FULLY MANAGED by Oyster Properties
- 2 Good-Sized Bedrooms with Fitted Wardrobes
- 2 Bathrooms (One En-suite)
- Separate Kitchen
- Private Outdoor Patio Space
- Secured Allocated Parking Space
- Close Proximity To The New Southgate Station And Arnos Grove Tube Station









Approximate Total Area
689.79 ft²
64.08 m²

For Illustration purposes only, not to scale

You can include any text here. The text can be modified upon generating your brochure.

