

# Shawfair Midlothian

DUNDAS



A collection of 3, 4, 5 &  
6 bedroom homes

Discover more at [dundas.co.uk](https://www.dundas.co.uk)



# Fantastic homes tailored to your style



Discover more at [dundas.co.uk](https://dundas.co.uk)

## Embrace tranquility, yet stay connected

Shawfair, situated in Midlothian, offers country-style living, just a short distance from Edinburgh. Nestled on the edge of The Wisp, Shawfair sits elevated on land once home to traditional estates and farms, now adored with mature trees. Residents can enjoy eight miles of cycling and walking paths, along with breathtaking views of the Firth of Forth and Pentland Hills, perfect for exploring new surroundings. With a quick fifteen-minute rail journey to Edinburgh Waverley, alongside newly built schools and community facilities, Shawfair is an ideal home for families. These luxurious detached homes are designed to harmonize with the surrounding natural green spaces, providing an elegant and welcoming base for a city-connected country lifestyle.







# Shawfair:

## Your new home.

Shawfair's location combines the serenity of rural living with the convenience of urban accessibility, where every day is enriched with the best of both worlds. Previously home to established estates and farming land, this development maintains this historical charm through thoughtful integration of mature trees and green spaces. Shawfair invites residents to explore eight miles of cycling and walking paths, carefully planned and providing a tranquil backdrop for everyday life.



**20**

Minutes to  
Edinburgh by car



**12**

Minute cycle to  
Shawfair Station



# Make yourself at home.

Within Shawfair you'll find a selection of homes that have all been carefully designed by award-winning architects to ensure each home meets your aspirations.

## Stay well connected

Perfectly positioned, Shawfair enables easy access to major routes such as the A7 and the Edinburgh City Bypass, facilitating smooth travel to enjoy the plethora of attractions available in the city, across the Lothians and Scottish Borders. The close-by railway station also offers a fifteen-minute journey to Edinburgh Waverley, adding to the convenience of the location.

## Embrace your new community

Shawfair is not just a place to live, but a thriving community with its very own amenities and recreational facilities. Whilst you'll have easy access to surrounding facilities, you'll be within easy reach of facilities even closer to home too, including shopping areas, restaurants, swimming pool and health centre. Shawfair also includes brand-new schools and community facilities, making it a practical and attractive option for families.



59

Homes across  
the development



13

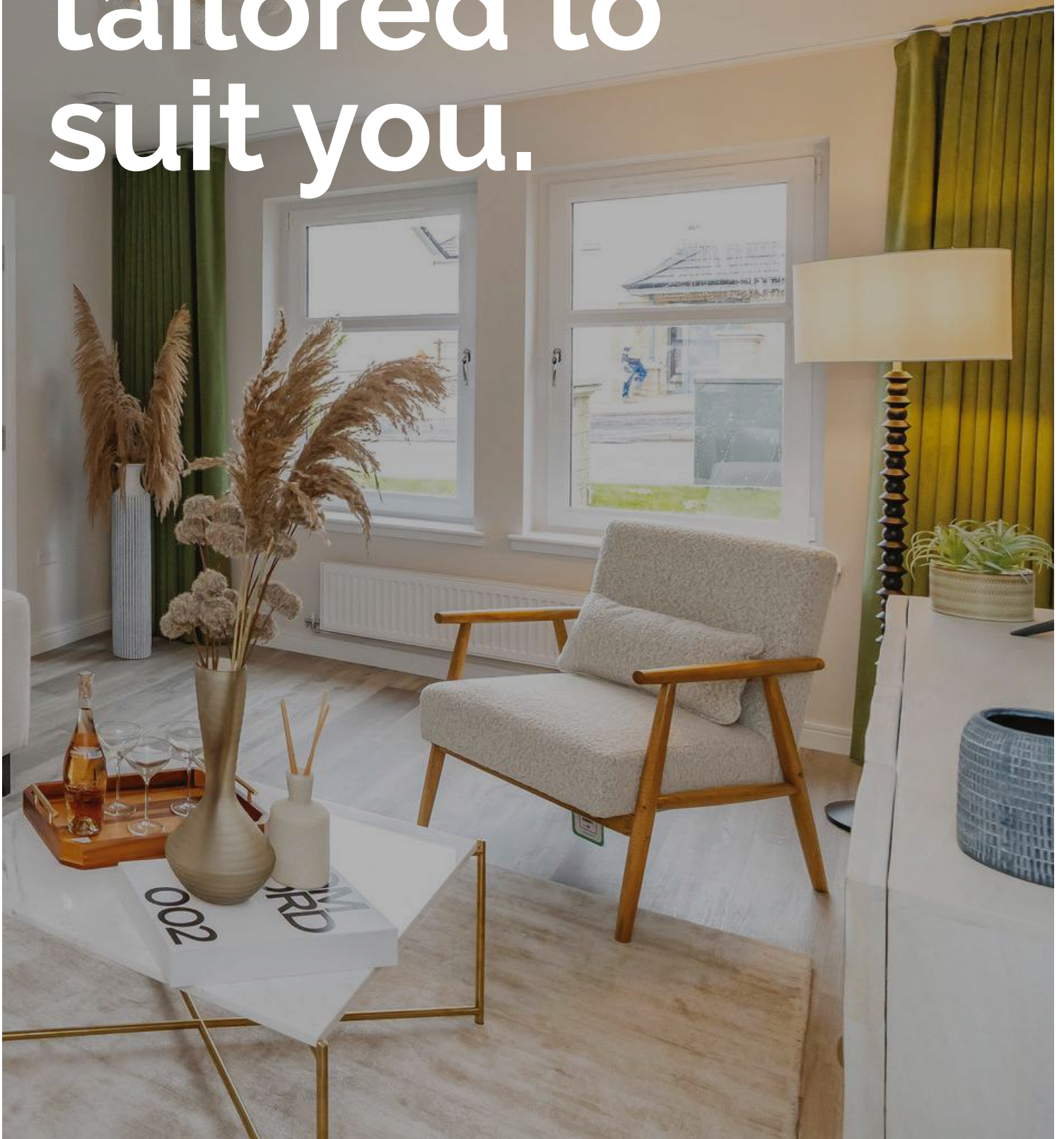
House  
Styles







Your home,  
perfectly  
tailored to  
suit you.





At Shawfair, we're building a community where you can truly settle in and make your home your own.

### **Versatile Spaces**

Each home is designed with versatility in mind, ensuring that you can design a space to suit your lifestyle. Choose from a variety of 3, 4, 5 & 6 bedroom homes, each crafted to maximise space and functionality. Whether you're starting a new chapter, or seeking a new vibrant community to call home, you'll find a home that's right for you at Shawfair.

### **Crafted Quality**

Our dedication to quality shines through every aspect of construction, guaranteeing durability and enduring charm. Discover open-concept living areas, spacious bedrooms and well-appointed kitchens, all thoughtfully designed to create a welcoming environment.

### **Practicality and green thinking**

Stylish and energy-efficient interiors make each house not just a home, but a statement of modern living. Each property is insulated and fitted with solar PV roof panels, along with double-glazed windows. What's more, all properties have a 10 Year NHBC warranty too, allowing you to buy with confidence knowing the construction quality has been recognised by an official body.

# Site Plan

## HOUSE TYPES

---

### 3 BED HOMES

---

- CD Castleford
- CM Corringham

### 4 BED HOMES

---

- FH Farnham
- GC Glencoe
- HR Harris

### 5 BED HOMES

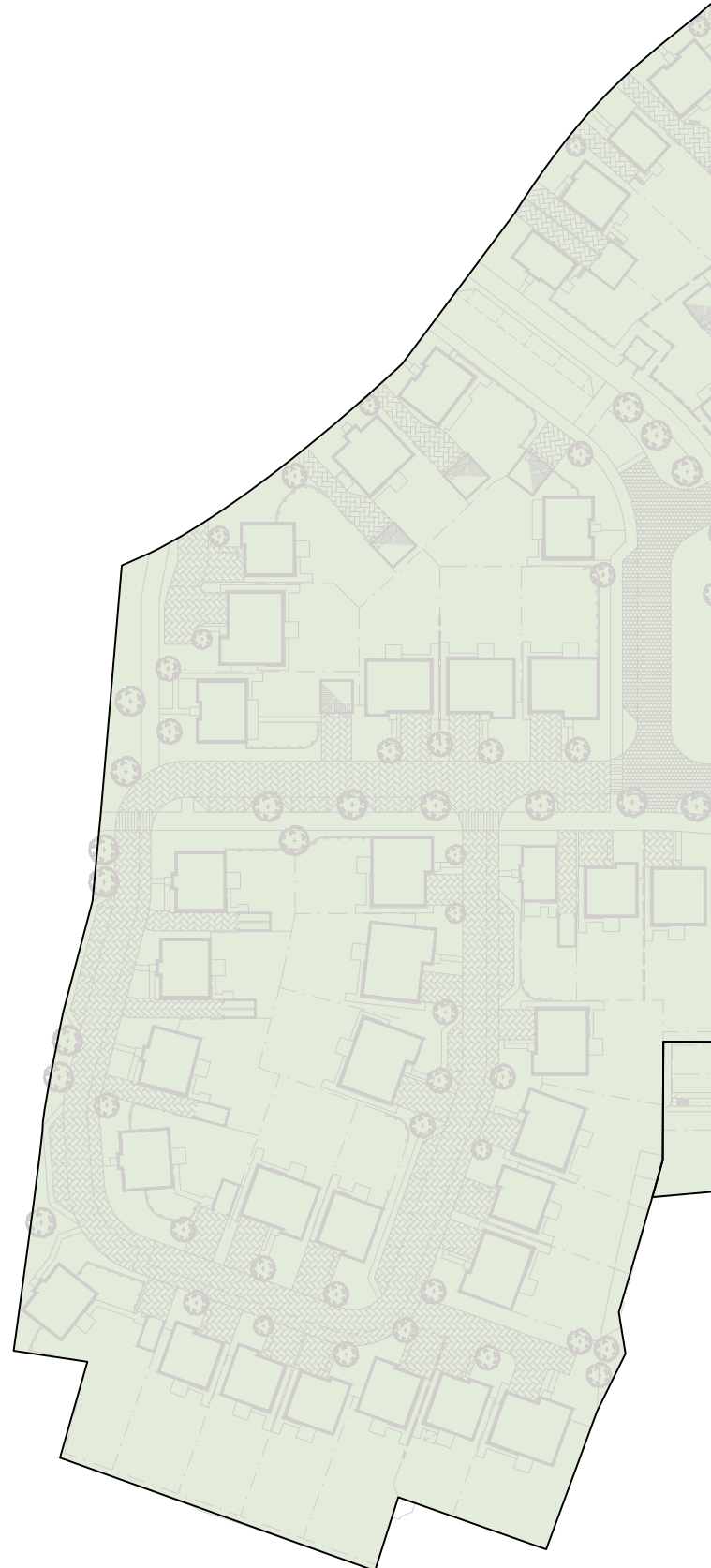
---

- KD Kendal
- KG Kingsley
- LE Leven
- NA Nairn
- NE Newport
- RO Roslin
- ST Stratford
- SH Strathearn

### 6 BED HOMES

---

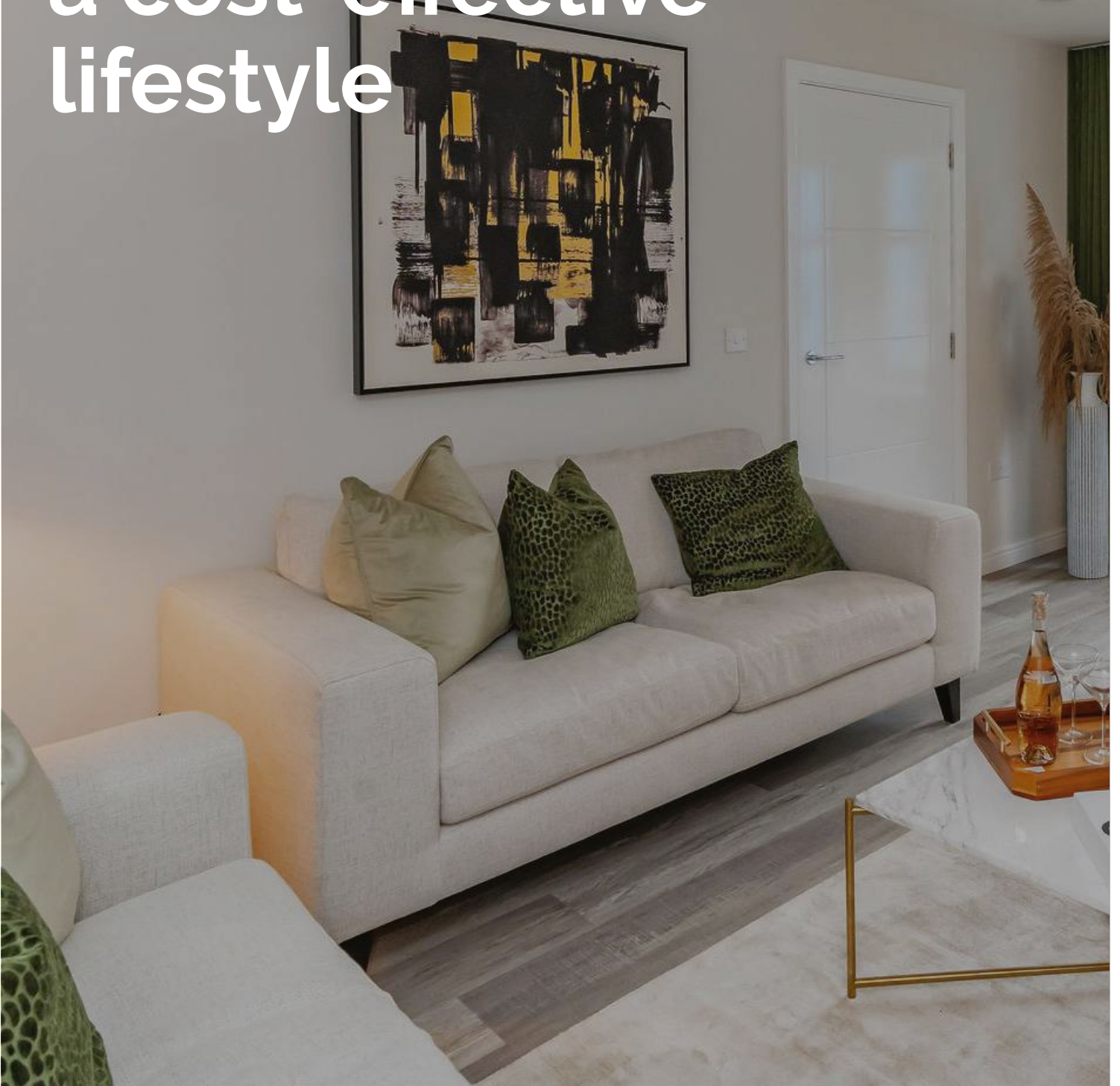
- MR Mellor







Every home comes  
equipped with  
sustainable features  
that support  
a cost-effective  
lifestyle





# Here's a quick overview of the specification at Shawfair

	Castleford	Corringham	Farmham	Glencoe	Harris	Kendal	Kingsley	Leven	Mellor	Nairn	Newport	Roslin	Stratford	Strathearn
Gas combi condensing boiler with thermostatic radiator valves to most radiators	●	●												
Gas condensing boiler with thermostatic radiator valves to most radiators			●	●	●	●	●	●	●	●	●	●	●	●
Pressurised hot water cylinder			●	●	●	●	●	●	●	●	●	●	●	●
In roof solar PV panels	●	●	●	●	●	●	●	●	●	●	●	●	●	●
High performance external doors	●	●	●	●	●	●	●	●	●	●	●	●	●	●
Upvc outward opening french doors to rear garden	●	●	●	●	●	●	●	●	●	●	●	●	●	●
Multi point locking to all external doors	●	●	●	●	●	●	●	●	●	●	●	●	●	●
Double glazed Upvc windows, with child restrictors*	●	●	●	●	●	●	●	●	●	●	●	●	●	●
Luxury fitted kitchen with choice of worktops and doors**	●	●	●	●	●	●	●	●	●	●	●	●	●	●
Chrome under unit worktop lighting to kitchen	●	●	●	●	●	●	●	●	●	●	●	●	●	●
Extractor Hood stainless steel chimney 60cm	●	●	●	●	●	●			●					
Extractor Hood stainless steel box hood 90cm							●	●		●	●	●	●	●
Gas Hob - 4 Burner	●	●	●	●	●	●			●					
Gas Hob - 5 Burner (Black)							●	●		●	●	●	●	●
Multifunction Single Oven	●	●	●	●	●	●	●	●	●	●	●	●	●	●
Microwave Oven			●	●	●	●								
Combination Microwave Oven							●	●	●	●	●	●	●	●
Fridge/Freezer	●	●	●	●	●	●	●	●	●	●	●	●	●	●
Dishwasher			●	●	●	●	●	●	●	●	●	●	●	●
Double socket with USB charging point in the lounge	●	●	●	●	●	●	●	●	●	●	●	●	●	●
Thermostatic chrome bar mixer shower in main bathroom			●	●	●	●	●	●	●	●	●	●	●	●
Thermostatic chrome bar mixer shower in en suite 1	●	●	●	●	●	●	●	●	●	●	●	●	●	●
Thermostatic chrome bar mixer shower in en suite 2									●		●	●	●	●
Vanity unit to bathroom (with storage)							●	●		●	●	●	●	●
Vanity unit to en suite (with storage)			●	●	●	●	●	●	●	●				
Vitra sanitaryware used throughout	●	●	●	●	●	●	●	●	●	●	●	●	●	●
Sliding wardrobe doors to bedroom 1		●		●							●	●		●
Passdoor wardrobe doors to bedroom 1	○		○		○	●	○	○	○	○			○	
Energy efficient lighting	●	●	●	●	●	●	●	●	●	●	●	●	●	●
TV point to lounge, bedroom 1	●	●	●	●	●	●	●	●	●	●	●	●	●	●
BT Openreach Superfast Broadband, with CAT 5 cable to lounge	●	●	●	●	●	●	●	●	●	●	●	●	●	●
White internal doors with chrome ironmongery	●	●	●	●	●	●	●	●	●	●	●	●	●	●
Walls & ceilings painted white	●	●	●	●	●	●	●	●	●	●	●	●	●	●
Smoke, heat and carbon monoxide alarms	●	●	●	●	●	●	●	●	●	●	●	●	●	●
Underfloor wall and roof space insulation	●	●	●	●	●	●	●	●	●	●	●	●	●	●
Light and power to the garage			●		●	●	●				●	●	●	●
Turfed front garden	●	●	●	●	●	●	●	●	●	●	●	●	●	●
Pavior driveways		●	●	●	●	●	●	●	●	●	●	●	●	●
10 Year NHBC warranty	●	●	●	●	●	●	●	●	●	●	●	●	●	●

\* Where applicable \*\*Subject to build stage

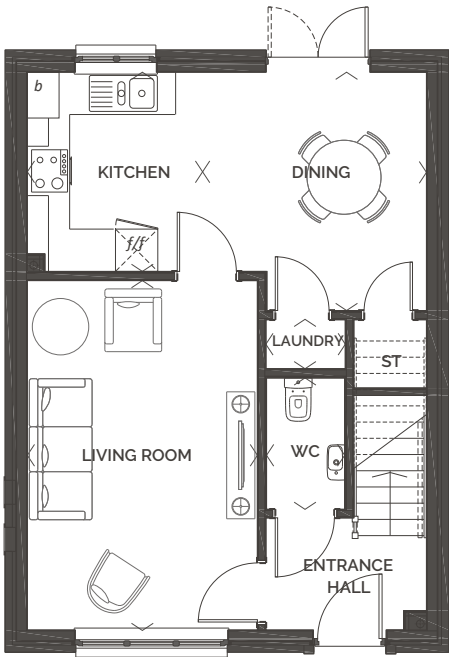
● Denotes fitted as standard ○ Walk-in



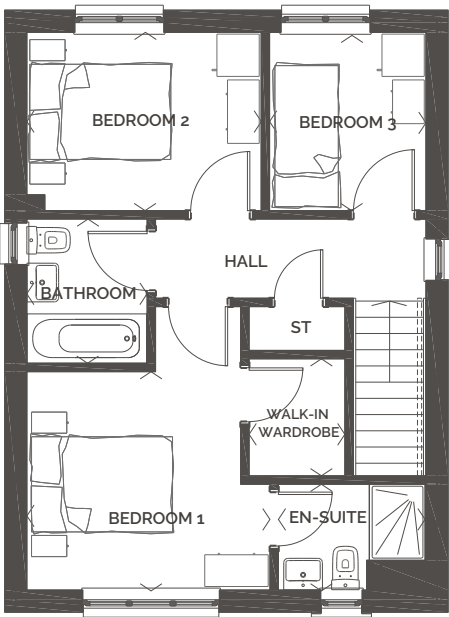


# **Castleford** 3 bedroom detached home

ROOM	M (WxD)	FT (WxD)
Living Room	3.26 x 4.95	10' 8" x 16' 3"
Kitchen	2.48 x 2.82	8' 2" x 9' 3"
Dining Area	3.17 x 3.37	11' 1" x 10' 5"
Laundry	1.12 x 0.69	3' 8" x 2' 3"
Bedroom 1	3.44 x 3.09	11' 4" x 10' 2"
En-Suite 1	2.08 x 1.50	6' 10" x 4' 11"
Bedroom 2	3.32 x 2.52	10' 11" x 8' 4"
Bedroom 3	2.22 x 2.52	7' 3" x 8' 4"
Bathroom	1.70 x 2.04	5' 7" x 6' 9"
<b>TOTAL FLOOR AREA</b>	<b>89.54m<sup>2</sup></b>	<b>963ft<sup>2</sup></b>



GROUND FLOOR



FIRST FLOOR

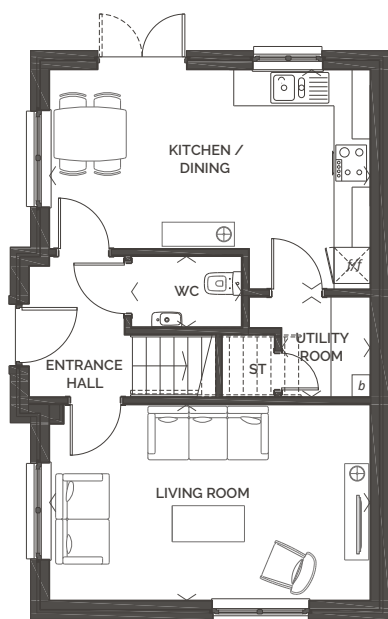




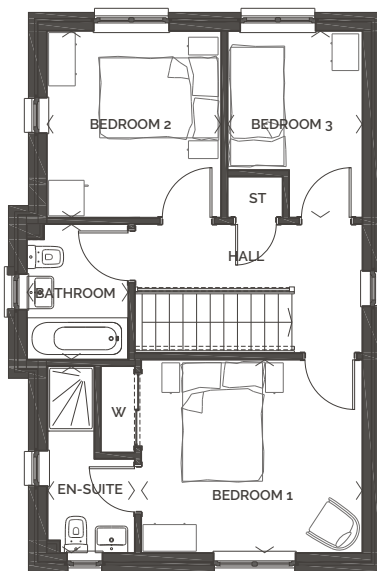
## Corringham

3 bedroom detached home with detached single garage

ROOM	M (WxD)	FT (WxD)
Living Room	5.32 x 3.24	17' 6" x 10' 8"
Kitchen/Dining	5.32 x 3.64	17' 6" x 11' 11"
Utility Room	1.51 x 1.66	5' 0" x 5' 5"
Bedroom 1	3.72 x 3.25	12' 3" x 10' 8"
En-Suite 1	1.47 x 3.14	4' 10" x 10' 4"
Bedroom 2	2.93 x 3.14	9' 7" x 10' 4"
Bedroom 3	2.26 x 3.14	7' 5" x 10' 4"
Bathroom	1.70 x 2.28	5' 7" x 7' 6"
<b>TOTAL FLOOR AREA</b>	<b>95.32m<sup>2</sup></b>	<b>1026ft<sup>2</sup></b>



**GROUND FLOOR**



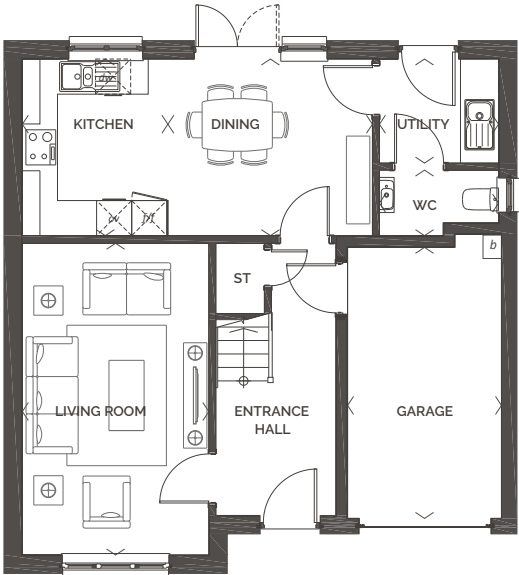
**FIRST FLOOR**



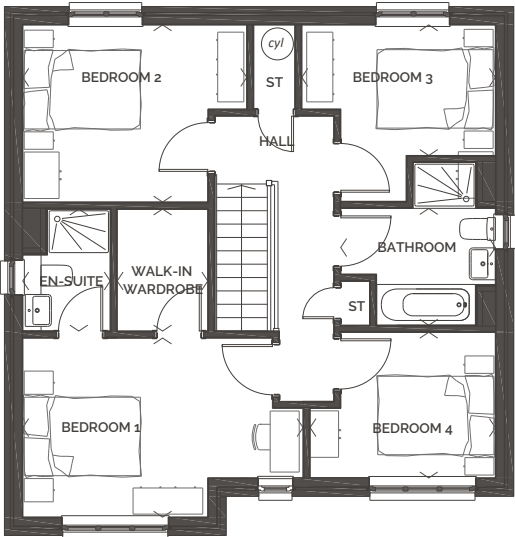
# Farnham

4 bedroom  
detached home  
with single garage

ROOM	M (WxD)	FT (WxD)
Living Room	3.18 x 5.32	10' 5" x 17' 6"
Kitchen	2.34 x 3.01	7' 8" x 9' 11"
Dining Area	3.63 x 3.01	11' 11" x 9' 11"
Utility Room	2.03 x 1.77	6' 8" x 5' 10"
Bedroom 1	3.77 x 3.08	12' 5" x 10' 2"
En-Suite 1	1.50 x 2.10	4' 11" x 6' 11"
Bedroom 2	3.64 x 3.05	12' 0" x 10' 0"
Bedroom 3	4.37 x 3.03	14' 4" x 10' 0"
Bedroom 4	3.33 x 2.50	10' 11" x 8' 3"
Bathroom	2.66 x 2.01	8' 9" x 6' 7"
<b>TOTAL FLOOR AREA</b>	<b>117.67m<sup>2</sup></b>	<b>1266ft<sup>2</sup></b>



GROUND FLOOR



FIRST FLOOR

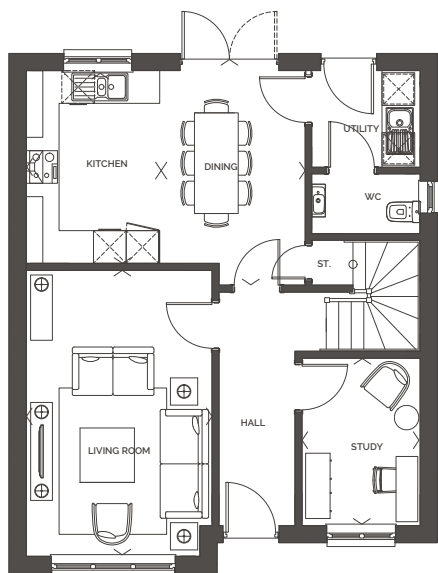




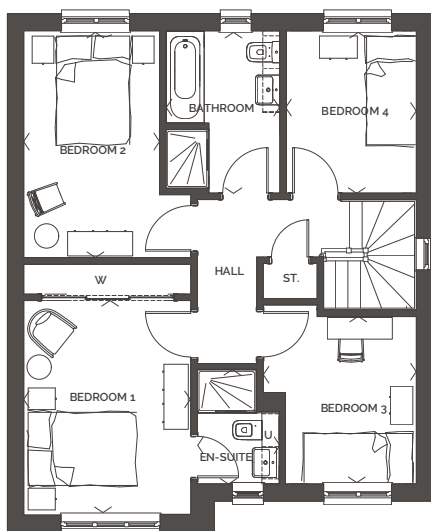
## Glencoe

4 bedroom  
detached home  
with detached  
single garage

ROOM	M (WxD)	FT (WxD)
Living Room	3.41 x 5.25	11' 2" x 17' 3"
Kitchen	2.45 x 3.54	8' 0" x 11' 7"
Dining Area	2.67 x 3.94	8' 9" x 12' 11"
Utility	1.99 x 1.77	6' 6" x 5' 10"
Study	2.17 x 3.07	7' 1" x 10' 1"
Bedroom 1	3.07 x 3.94	10' 1" x 12' 11"
En-Suite 1	1.50 x 2.10	4' 11" x 6' 11"
Bedroom 2	2.49 x 4.18	8' 2" x 13' 9"
Bedroom 3	2.418 x 3.08	7' 11" x 10' 1"
Bedroom 4	2.40 x 2.99	7' 10" x 9' 10"
Bathroom	2.10 x 2.99	6' 11" x 9' 10"
<b>TOTAL FLOOR AREA</b>	<b>124.54m<sup>2</sup></b>	<b>1340ft<sup>2</sup></b>



**GROUND FLOOR**



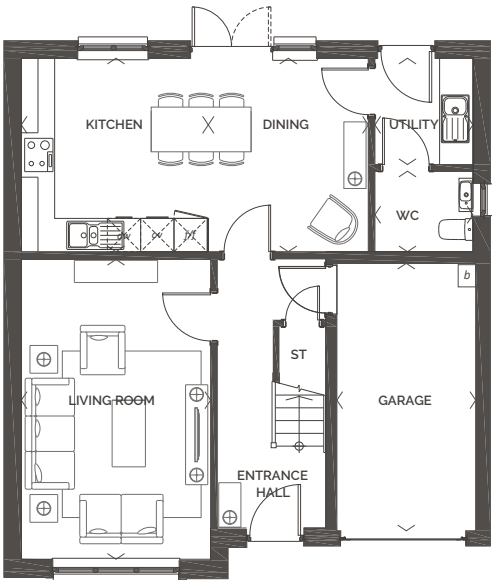
**FIRST FLOOR**



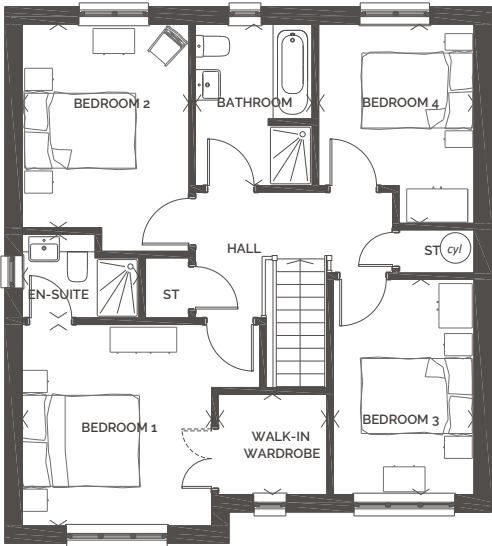
# Harris

4 bedroom  
detached home  
with single garage

ROOM	M (WxD)	FT (WxD)
Living Room	3.41 x 5.40	11' 2" x 17' 9"
Kitchen	3.36 x 3.48	11' 1" x 11' 5"
Dining/Family Area	2.88 x 3.48	9' 5" x 11' 5"
Utility	1.76 x 1.91	6' 3" x 5' 9"
Bedroom 1	3.41 x 3.62	11' 2" x 11' 11"
En-Suite 1	2.10 x 1.50	6' 11" x 4' 11"
Bedroom 2	3.00 x 3.66	9' 10" x 12' 0"
Bedroom 3	2.53 x 3.87	8' 4" x 12' 9"
Bedroom 4	2.79 x 3.58	9' 2" x 11' 9"
Bathroom	2.10 x 2.90	6' 11" x 9' 6"
<b>TOTAL FLOOR AREA</b>	<b>128.47m<sup>2</sup></b>	<b>1382ft<sup>2</sup></b>



GROUND FLOOR



FIRST FLOOR

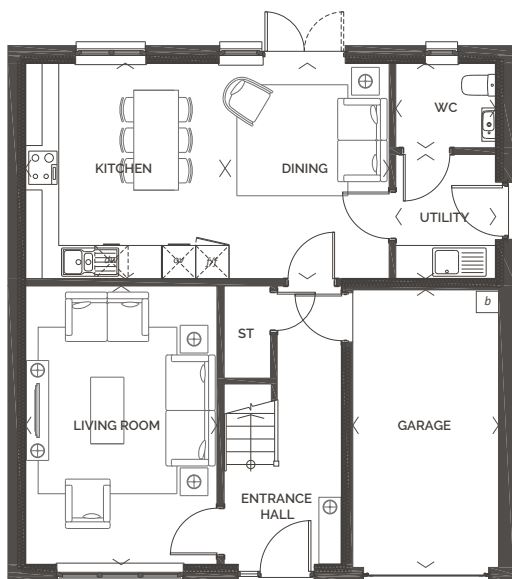




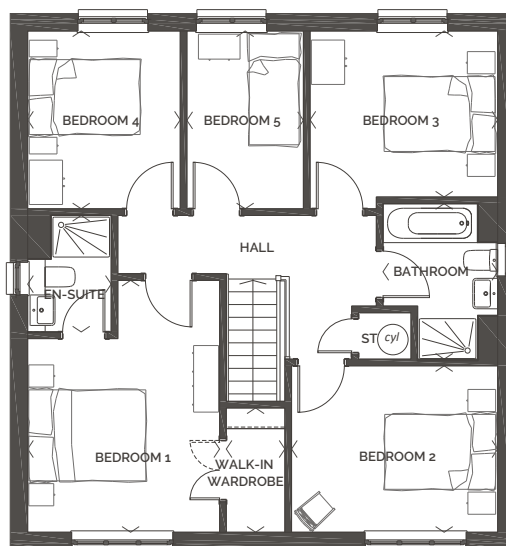
# Kendal

## 5 bedroom detached home with single garage

ROOM	M (WxD)	FT (WxD)
Living Room	3.45 x 5.02	11'4" x 16'6"
Dining Room/ Family Area	2.95 x 3.88	9'8" x 12'9"
Kitchen	3.59 x 3.88	11'10" x 12'9"
Utility	1.80 x 2.24	5'11" x 7'4"
Bedroom 1	3.46 x 4.54	11'4" x 14'11"
En-Suite 1	1.50 x 2.10	4'11" x 6'11"
Bedroom 2	3.71 x 3.00	12'2" x 9'10"
Bedroom 3	3.38 x 2.99	11'1" x 9'10"
Bedroom 4	2.75 x 3.20	9'0" x 10'6"
Bedroom 5	2.10 x 3.20	6'11" x 10'6"
Bathroom	2.06 x 2.80	6'9" x 9'2"
<b>TOTAL FLOOR AREA</b>	<b>138.79m<sup>2</sup></b>	<b>1493ft<sup>2</sup></b>



**GROUND FLOOR**



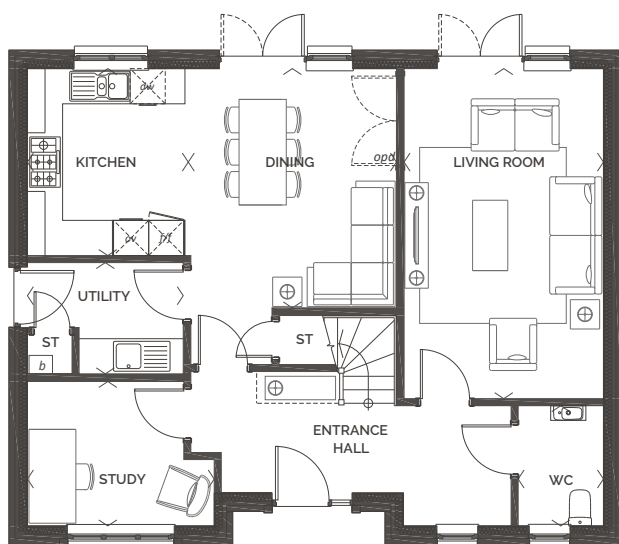
**FIRST FLOOR**



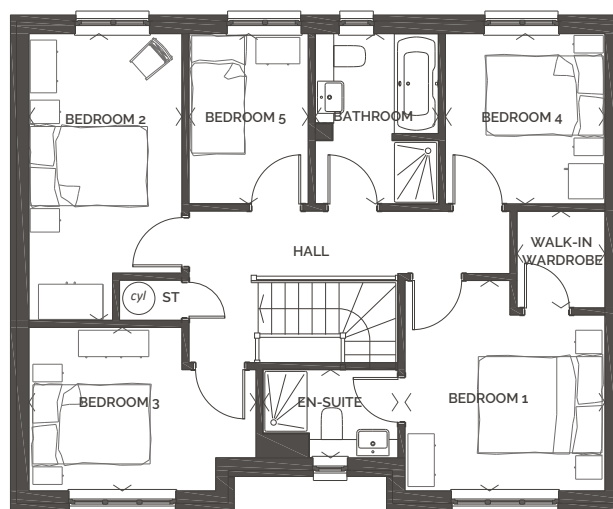
# Kingsley

5 bedroom detached home with detached double garage

ROOM	M (WxD)	FT (WxD)
Living Room	3.40 x 5.62	11'2" x 18'6"
Kitchen	2.74 x 3.18	9'0" x 10'5"
Family/Dining Area	3.55 x 4.08	11'8" x 13'5"
Study	3.18 x 2.46	10'5" x 8'1"
Utility	2.65 x 1.89	8'9" x 6'3"
Bedroom 1	3.41 x 3.58	11'2" x 11'9"
En-Suite 1	2.30 x 1.50	7'7" x 4'11"
Bedroom 2	2.60 x 4.88	8'7" x 16'0"
Bedroom 3	3.87 x 2.79	12'8" x 9'2"
Bedroom 4	2.72 x 2.90	8'11" x 9'6"
Bedroom 5	2.03 x 2.90	6'8" x 9'6"
Bathroom	2.10 x 2.90	6'11" x 9'6"
<b>TOTAL FLOOR AREA</b>	<b>149.54m<sup>2</sup></b>	<b>1609ft<sup>2</sup></b>



GROUND FLOOR



FIRST FLOOR

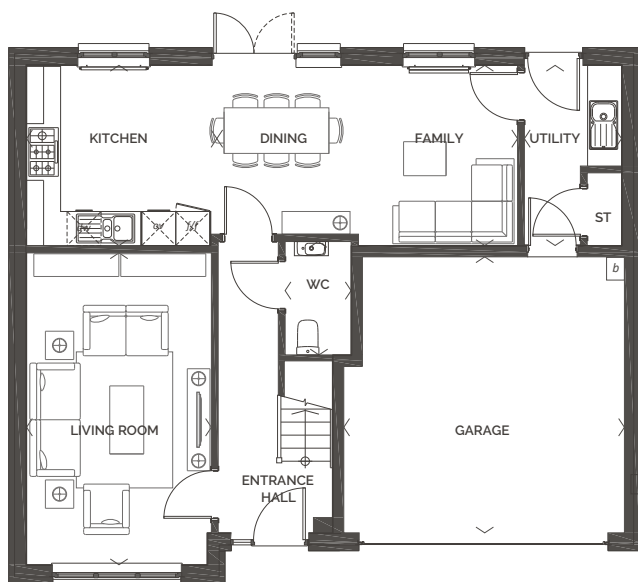




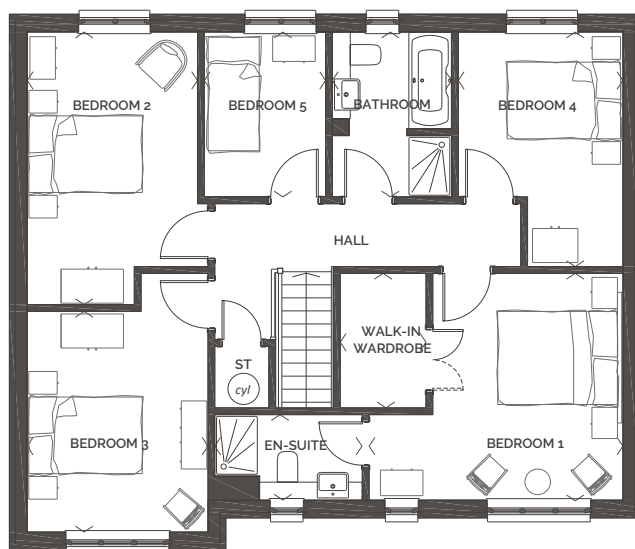
## Leven

5 bedroom  
detached home with  
double garage

ROOM	M (WxD)	FT (WxD)
Living Room	3.26 x 5.50	10'8" x 18'1"
Kitchen	3.23 x 3.17	10'7" x 10'5"
Family/Dining Area	5.42 x 3.17	17'10" x 10'5"
Utility	1.71 x 3.17	5'8" x 10'5"
Bedroom 1	4.47 x 3.99	14'8" x 13'1"
En-Suite 1	2.60 x 1.50	8'6" x 4'11"
Bedroom 2	3.00 x 4.80	9'10" x 15'9"
Bedroom 3	3.18 x 3.88	10'5" x 12'9"
Bedroom 4	2.90 x 4.13	9'6" x 13'7"
Bedroom 5	2.13 x 2.90	7'0" x 9'6"
Bathroom	2.10 x 2.90	6'11" x 9'6"
<b>TOTAL FLOOR AREA</b>	<b>151.51m<sup>2</sup></b>	<b>1630ft<sup>2</sup></b>



**GROUND FLOOR**



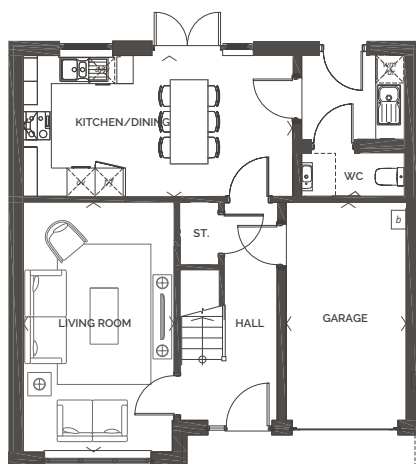
**FIRST FLOOR**



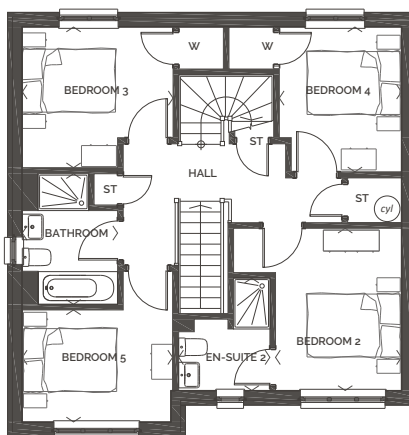
## Mellor

6 bedroom  
detached home with  
single garage

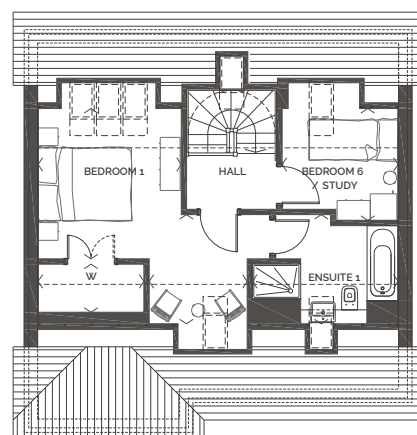
ROOM	M (WxD)	FT (WxD)
Living Room	3.27 x 5.32	10'9" x 17'6"
Kitchen	2.34 x 3.01	7'8" x 9'11"
Family/Dining Area	3.63 x 3.01	11'11" x 9'11"
Utility	2.03 x 1.77	6'8" x 5'10"
Bedroom 2	2.70 x 3.48	8'10" x 11'5"
En-Suite 2	1.91 x 2.40	6'3" x 7'11"
Bedroom 3	3.28 x 3.01	10'9" x 9'11"
Bedroom 4	2.57 x 3.06	8'5" x 10'1"
Bedroom 5	3.27 x 2.40	10'9" x 7'11"
Bathroom	2.04 x 2.80	6'9" x 9'2"
Bedroom 1	3.28 x 3.40	10'9" x 11'2"
En-suite 1	3.29 x 2.46	10'10" x 8'1"
Bedroom 6/Study	2.57 x 2.53	8'5" x 8'4"
<b>TOTAL FLOOR AREA</b>	<b>158.05m<sup>2</sup></b>	<b>1701ft<sup>2</sup></b>



GROUND FLOOR



FIRST FLOOR



SECOND FLOOR

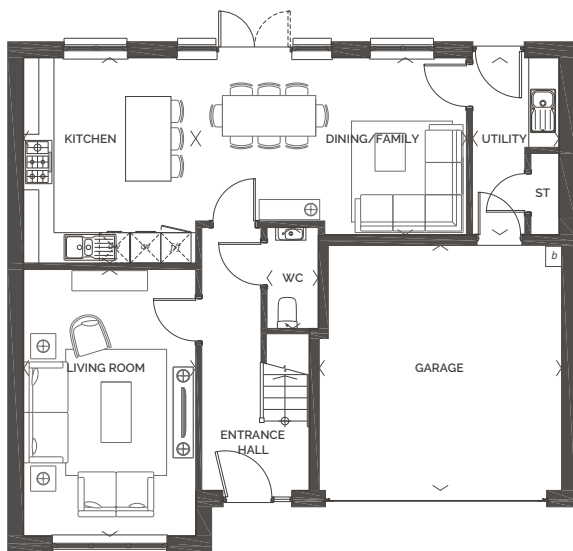




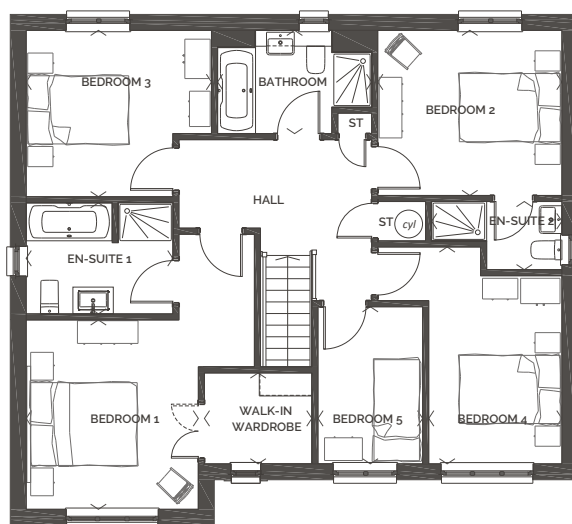
## Nairn

5 bedroom  
detached home with  
double garage

ROOM	M (WxD)	FT (WxD)
Living Room	3.41 x 5.28	11'2" x 17'4"
Kitchen	3.41 x 4.06	11'2" x 13'4"
Dining/Family Area	5.36 x 3.50	17'7" x 11'6"
Utility	1.71 x 3.50	5'8" x 11'6"
Bedroom 1	3.41 x 3.75	11'2" x 12'4"
En-Suite 1	2.90 x 2.20	9'6" x 7'3"
Bedroom 2	3.64 x 3.27	12'0" x 10'9"
En-suite 2	2.58 x 1.35	8'6" x 4'5"
Bedroom 3	3.67 x 3.29	12'0" x 10'10"
Bedroom 4	2.63 x 4.29	8'8" x 14'1"
Bedroom 5	2.07 x 3.11	6'10" x 10'2"
Bathroom	3.05 x 2.04	10'0" x 6'9"
<b>TOTAL FLOOR AREA</b>	<b>163.41m<sup>2</sup></b>	<b>1759ft<sup>2</sup></b>



GROUND FLOOR



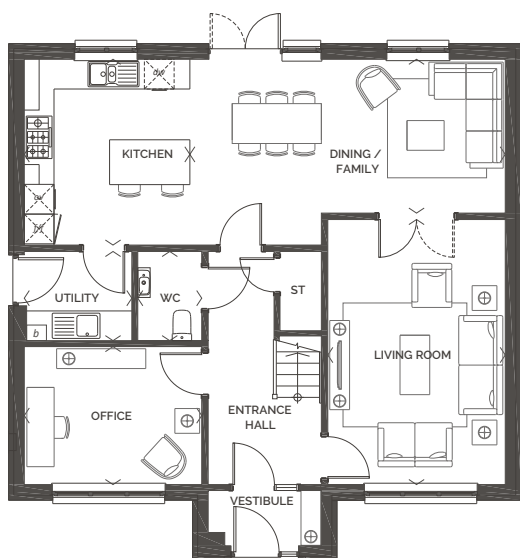
FIRST FLOOR



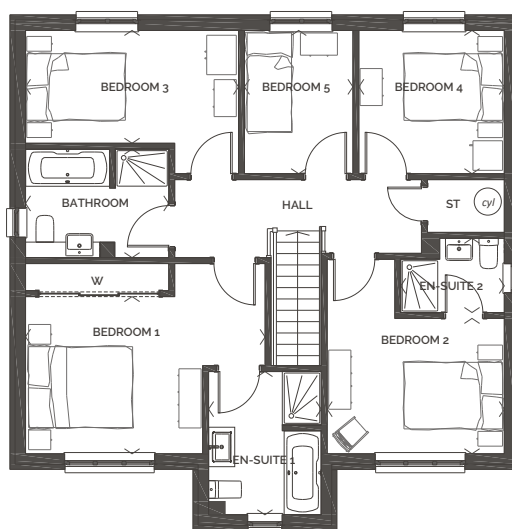
## Newport

5 bedroom  
detached home  
with detached  
double garage

ROOM	M (WxD)	FT (WxD)
Living Room	3.58 x 5.34	11'9" x 17'6"
Kitchen	3.34 x 3.75	10'11" x 12'4"
Dining/Family Area	6.36 x 3.08	20'10" x 10'1"
Utility	2.17 x 1.80	7'1" x 5'11"
Bedroom 1	4.86 x 3.19	15'11" x 10'6"
En-Suite 1	2.29 x 2.91	7'6" x 9'7"
Bedroom 2	3.59 x 2.75	11'9" x 9'0"
En-suite 2	2.10 x 1.51	6'11" x 4'11"
Bedroom 3	4.32 x 2.29	14'2" x 7'6"
Bedroom 4	2.95 x 2.91	9'8" x 9'7"
Bedroom 5	2.20 x 2.91	7'3" x 9'7"
Bathroom	2.91 x 2.20	9'7" x 7'3"
<b>TOTAL FLOOR AREA</b>	<b>172.33m<sup>2</sup></b>	<b>1855ft<sup>2</sup></b>



GROUND FLOOR



FIRST FLOOR

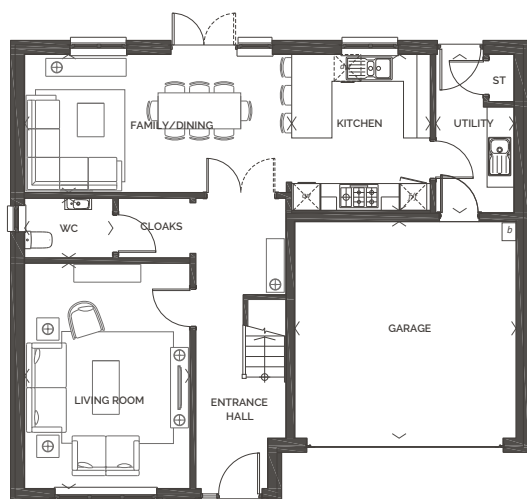




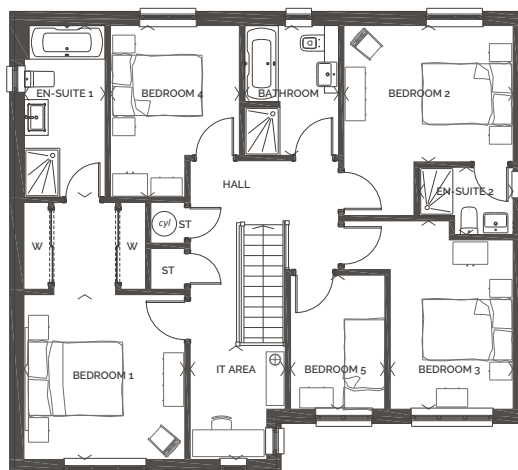
## Roslin

5 bedroom  
detached home with  
double garage

ROOM	M (WxD)	FT (WxD)
Living Room	3.70 x 5.04	12' 2" x 16' 6"
Kitchen	3.10 x 3.48	10' 2" x 11' 5"
Dining/Family Area	5.97 x 3.08	19' 7" x 10' 2"
Utility	1.75 x 3.54	5' 9" x 11' 7"
Bedroom 1	3.60 x 3.68	11' 10" x 12' 1"
En-Suite 1	1.80 x 3.83	5' 11" x 12' 7"
Bedroom 2	3.78 x 3.05	12' 5" x 10' 0"
En-suite 2	2.10 x 1.50	6' 11" x 4' 11"
Bedroom 3	2.75 x 4.21	9' 0" x 13' 10"
Bedroom 4	2.11 x 3.00	9' 6" x 12' 7"
Bedroom 5	2.07 x 3.11	6' 11" x 9' 10"
Bathroom	2.10 x 2.90	6' 11" x 9' 6"
IT Area	2.12 x 2.53	7' 0" x 8' 4"
<b>TOTAL FLOOR AREA</b>	<b>174.45m<sup>2</sup></b>	<b>1877ft<sup>2</sup></b>



**GROUND FLOOR**



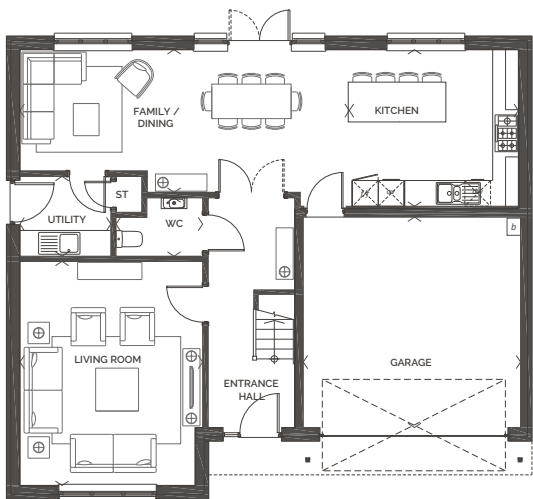
**FIRST FLOOR**



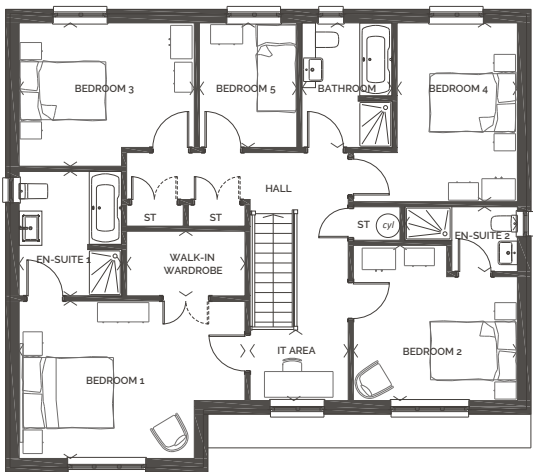
# Stratford

5 bedroom  
detached home with  
double garage

ROOM	MM (WxD)	FT (WxD)
Living Room	4.26 x 5.22	14' 0" x 17' 2"
Kitchen	3.94 x 3.65	12' 11" x 12' 0"
Family/Dining Area	7.68 x 3.32	25' 2" x 10' 11"
Utility	2.12 x 1.86	6' 11" x 6' 1"
Bedroom 1	5.26 x 3.67	17' 3" x 12' 1"
En-Suite 1	2.38 x 2.90	7' 10" x 9' 6"
Bedroom 2	3.82 x 3.62	12' 7" x 11' 11"
En-Suite 2	2.61 x 1.51	8' 7" x 4' 11"
Bedroom 3	4.08 x 3.34	13' 5" x 11' 0"
Bedroom 4	2.80 x 4.17	9' 2" x 13' 8"
Bedroom 5	2.27 x 2.90	7' 5" x 9' 6"
Bathroom	2.10 x 2.90	6' 11" x 9' 6"
IT Area	2.28 x 1.64	7' 6" x 5' 5"
<b>TOTAL FLOOR AREA</b>	<b>189.16m<sup>2</sup></b>	<b>2035ft<sup>2</sup></b>



GROUND FLOOR



FIRST FLOOR

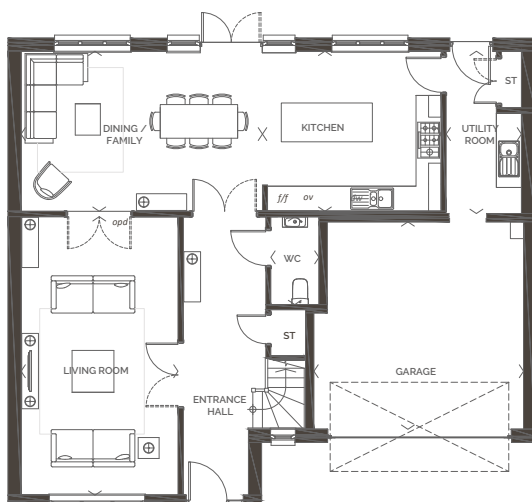




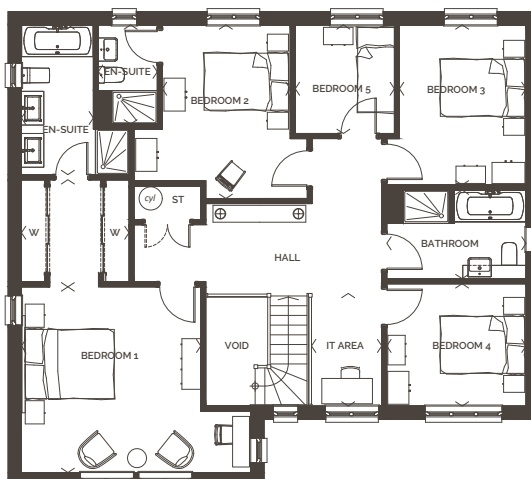
# Strathearn

## 5 bedroom detached home with double garage

ROOM	M (WxD)	FT (WxD)
Living Room	3.75 x 6.65	12' 4" x 21' 10"
Kitchen	4.27 x 3.82	14' 0" x 12' 7"
Dining/Family Area	5.77 x 3.82	18' 11" x 12' 7"
Utility	1.80 x 3.87	5' 11" x 12' 9"
Bedroom 1	4.25 x 4.40	13' 11" x 14' 5"
En-Suite 1	2.02 x 3.55	6' 8" x 11' 8"
Bedroom 2	3.03 x 4.46	9' 11" x 14' 8"
En-suite 2	1.39 x 2.30	4' 7" x 7' 7"
Bedroom 3	3.00 x 3.79	9' 10" x 12' 5"
Bedroom 4	3.30 x 2.90	10' 10" x 9' 6"
Bedroom 5	2.35 x 2.57	7' 9" x 8' 5"
Bathroom	3.30 x 2.10	10' 10" x 6' 11"
IT Area	1.66 x 2.67	5' 6" x 8' 9"
<b>TOTAL FLOOR AREA</b>	<b>207.16m<sup>2</sup></b>	<b>2229ft<sup>2</sup></b>



**GROUND FLOOR**



**FIRST FLOOR**









## Built with real people in mind

At Dundas Estates, all homes are attentively crafted to advance your lifestyle. We put our customers at the heart of what we do, helping you throughout your moving journey, with a personal touch.

### Contact us.

Find out more about Shawfair and discover a new way of living



0345 853 5009



[shawfair@dundas.co.uk](mailto:shawfair@dundas.co.uk)





## Development

Shawfair,  
Midlothian,  
EH16 4SJ

☎ 0345 853 5009  
✉ [shawfair@dundas.co.uk](mailto:shawfair@dundas.co.uk)

## Our Head Office

Dundas Estates & Development Co. Ltd,  
Alderstone House,  
MacMillan Road  
Livingston,  
EH54 7AW

☎ 0345 853 5000  
✉ [sales@dundas.co.uk](mailto:sales@dundas.co.uk)

## Connect with us



Discover more at [dundas.co.uk](http://dundas.co.uk)

### Customer Notice

These particulars are prepared with care for the convenience of prospective purchasers. We operate a policy of continuous product development and therefore individual features, specification and elevational treatments may vary from time to time. Consequently, these particulars should be treated as general guidance only and should not be relied upon as describing any of the Specified Matters referred to in the Regulations made under the Property Misdescriptions Act 1991. Nor do they constitute a contract, part of a contract or a warranty.



**JAMES WALKER**  
LEITH

Dundas Estates & Development Co Ltd is the property development division of James Walker (Leith) Ltd, a quality construction company established in 1863. Registered Office: Alderstone House, MacMillan Road, Livingston. Registered in Scotland No.132918.