



13 Glebe Street, Great Harwood

£74,895 Freehold

TWO BEDROOM TERRACE IN POPULAR GREAT HARWOOD Featuring two reception rooms and potential to make your own, this ticks a lot of boxes for first time buyers and investors alike.

Council Tax band: A

Tenure: Freehold

EPC Energy Efficiency Rating: D

EPC Environmental Impact Rating: D



TWO BEDROOM TERRACE IN POPULAR GREAT HARWOOD Featuring two reception rooms and potential to make your own, this ticks a lot of boxes for first time buyers and investors alike.

Welcome to this inviting two-bedroom terrace in the sought-after area of Great Harwood. Boasting two generously sized reception rooms, perfect for entertaining guests or relaxing in style, this property offers the opportunity to move in without delay and the potential to add value, making the property your own. The kitchen features ample worktop space and room for all your appliances with potential to improve and add value. Upstairs, two well-proportioned bedrooms provide a peaceful retreat after a long day. The three piece family bathroom suite in white, with a shower over the bath, wc, sink and storage cupboard completes this property internally.

With no chain delay, freehold tenure, and a council tax band of A, this home presents a hassle-free buying opportunity. On-street parking ensures convenience, while the close proximity to the town centre and good local schools make this the ideal location for investors and young families. Step outside to the private back yard which includes three brick-built storage shed for additional convenience.



Vestibule

Carpet flooring, uPVC front door.

Lounge

Carpet flooring, cupboards housing meters, double glazed wooden framed window, panel radiator.

Second Reception Room

Carpet flooring, under stairs storage, double glazed uPVC window, panel radiator.

Kitchen

Laminate flooring, fitted wall and base units with contrasting work surfaces, stainless steel sink and drainer, tiled splash backs, space for cooker, washing machine and fridge freezer, double glazed uPVC window, wooden door leading to the rear garden, panel radiator.

Landing

Carpet flooring.

Bedroom 1

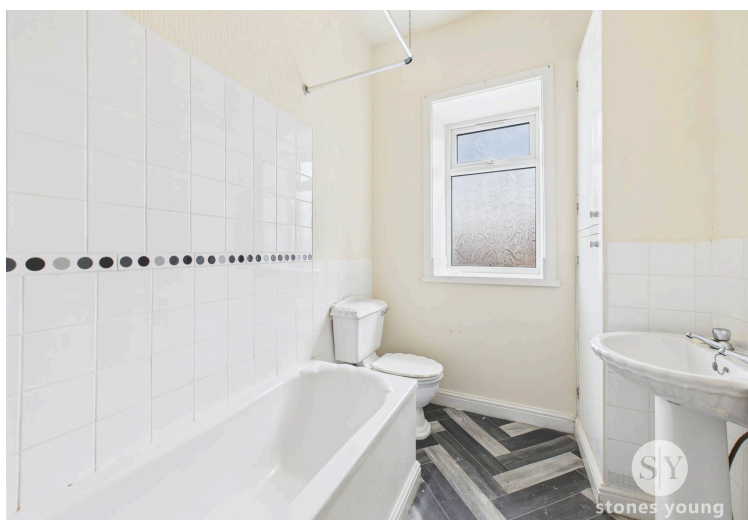
Double bedroom with carpet flooring, double glazed uPVC window, panel radiator.

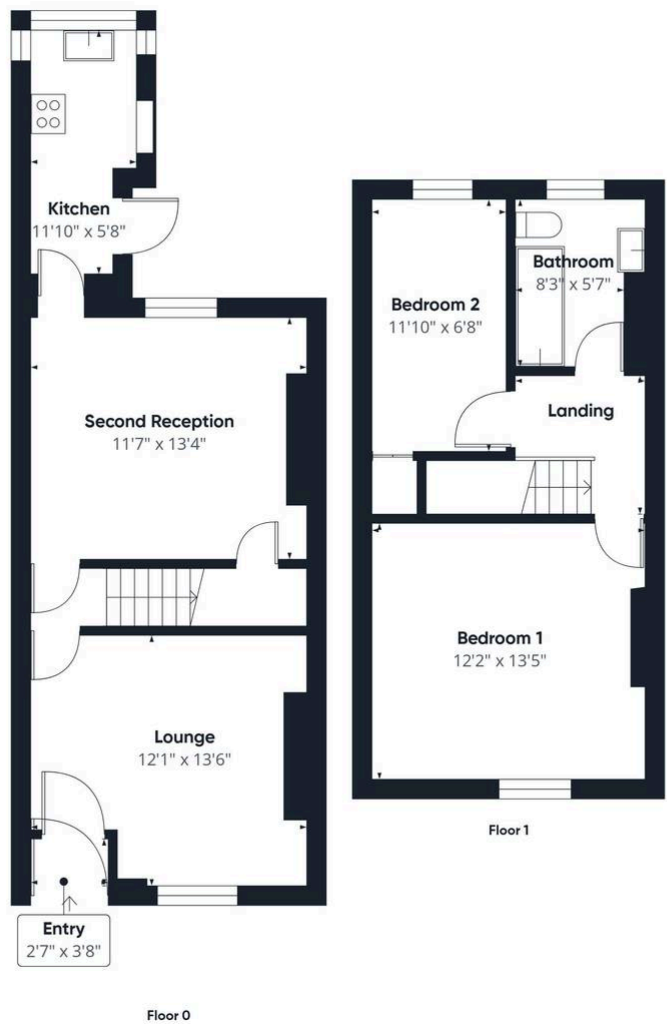
Bedroom 2

Double bedroom with carpet flooring, storage cupboard, double glazed uPVC window, panel radiator.

Bathroom

Vinyl flooring, three piece in white comprising of mains fed shower over bath, wc and basin, tiled splash backs cupboard housing boiler, frosted double glazed uPVC window, panel radiator.





Approximate total area⁽¹⁾
754 ft²

(1) Excluding balconies and terraces

Calculations reference the RICS IPMS 3C standard. Measurements are approximate and not to scale. This floor plan is intended for illustration only.

GIRAFFE360

You can include any text here. The text can be modified upon generating your brochure.