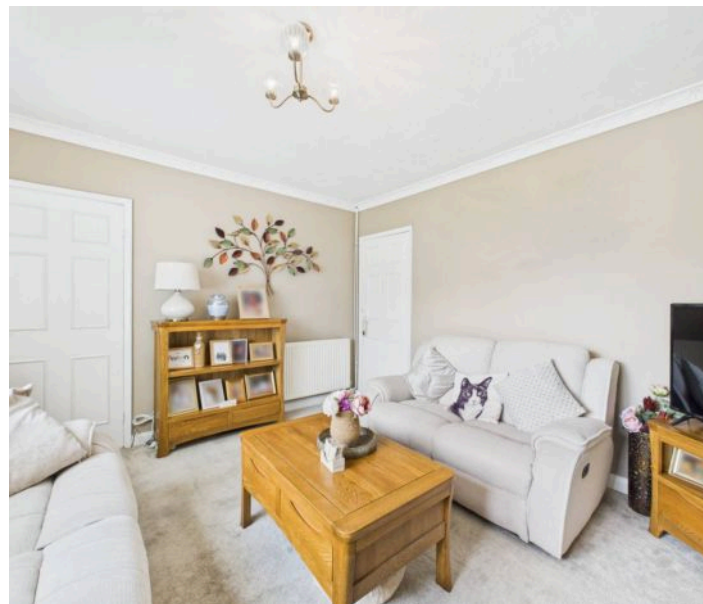




6 Weedon Close, Nottingham - NG3 7DE

Guide Price £180,000

DavidJames
the estate agent



6 Weedon Close

Nottingham, Nottingham

End-terrace home with practical living spaces, 2 double bedrooms and a low-maintenance garden with a driveway. Ideally positioned for access to the City Centre and a perfect first-time purchase!

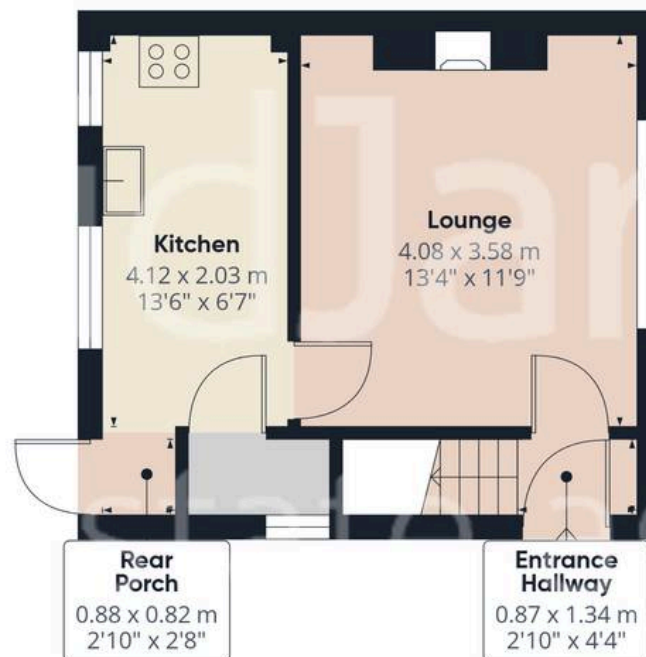
Council Tax band: A

Tenure: Freehold

- End-terrace house
- An ideal first-time buy or investment purchase
- Cul-de-sac location
- Within easy reach of schools, shops and City-bound transport links
- Spacious lounge with large front window and feature electric fire
- Fitted kitchen with a range of units, pantry and breakfast bar plus space for freestanding appliances
- Two well-proportioned and neutrally-decorated double bedrooms
- Well-appointed modern bathroom with a white three-piece suite
- Hard-landscaped rear garden for low-maintenance outdoor living plus two useful outbuildings
- Driveway providing convenient off-street parking







Floor 0



Floor 1

Approximate total area⁽¹⁾

52.9 m²

569 ft²

(1) Excluding balconies and terraces

Calculations reference the RICS IPMS 3C standard. Measurements are approximate and not to scale. This floor plan is intended for illustration only.

GIRAFFE360



David James Estate Agents

376 Carlton Hill, Carlton - NG4 1JA

0115 987 8957 • carlton@david-james.com • www.david-james.com

These particulars are produced in good faith and are set out as a general guide only. Measurements are approximate and floor plans are for illustrative purposes only. Services have not been tested. We have established professional relationships with third-party suppliers for the provision of services to Clients, details of which can be found on the property listing page on our website.