





9 Massey Close

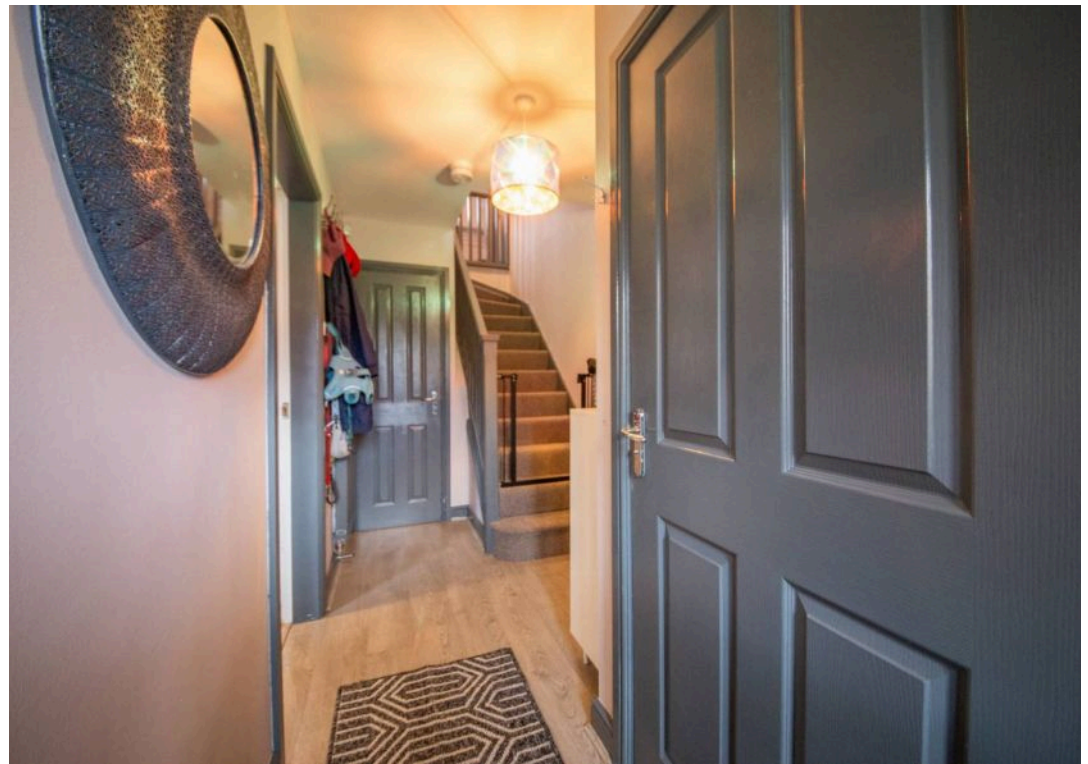
Newton-Le-Willows, Newton-Le-Willows

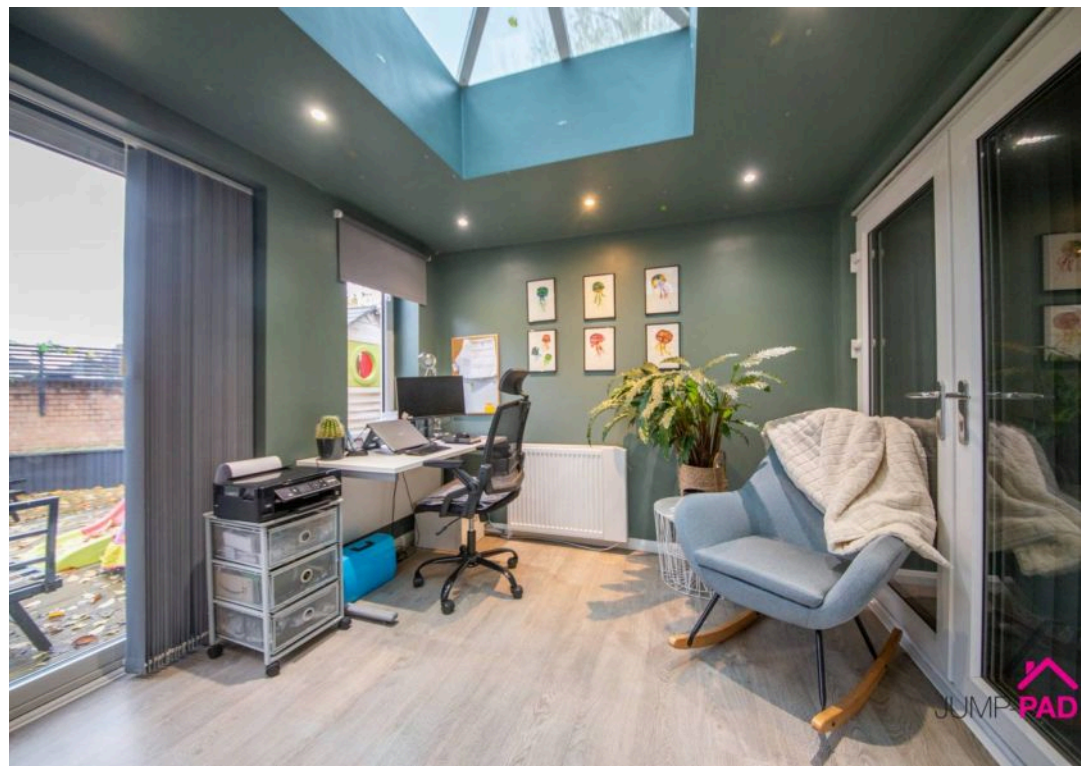
4-bed detached in a quiet corner adjoining a field, built by Morris Homes. Open-plan kitchen/dining, spacious living room, large orangery, double driveway, rear garden with decking and artificial lawn
Council Tax band: D

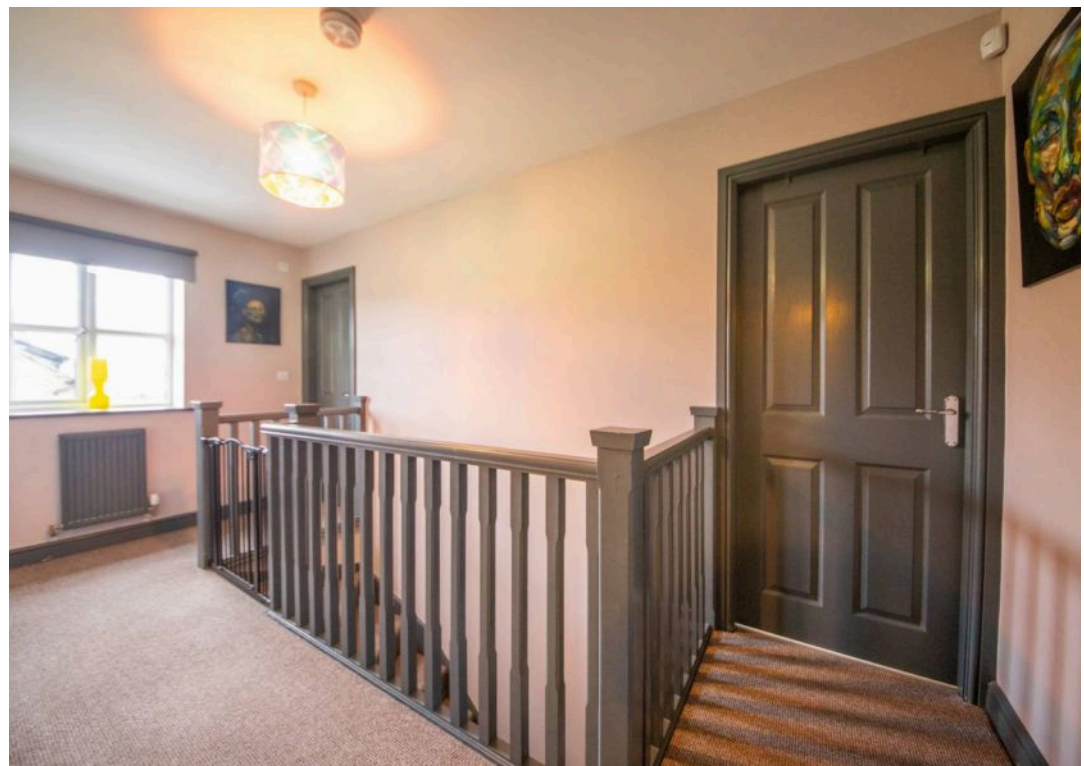
Tenure: Leasehold

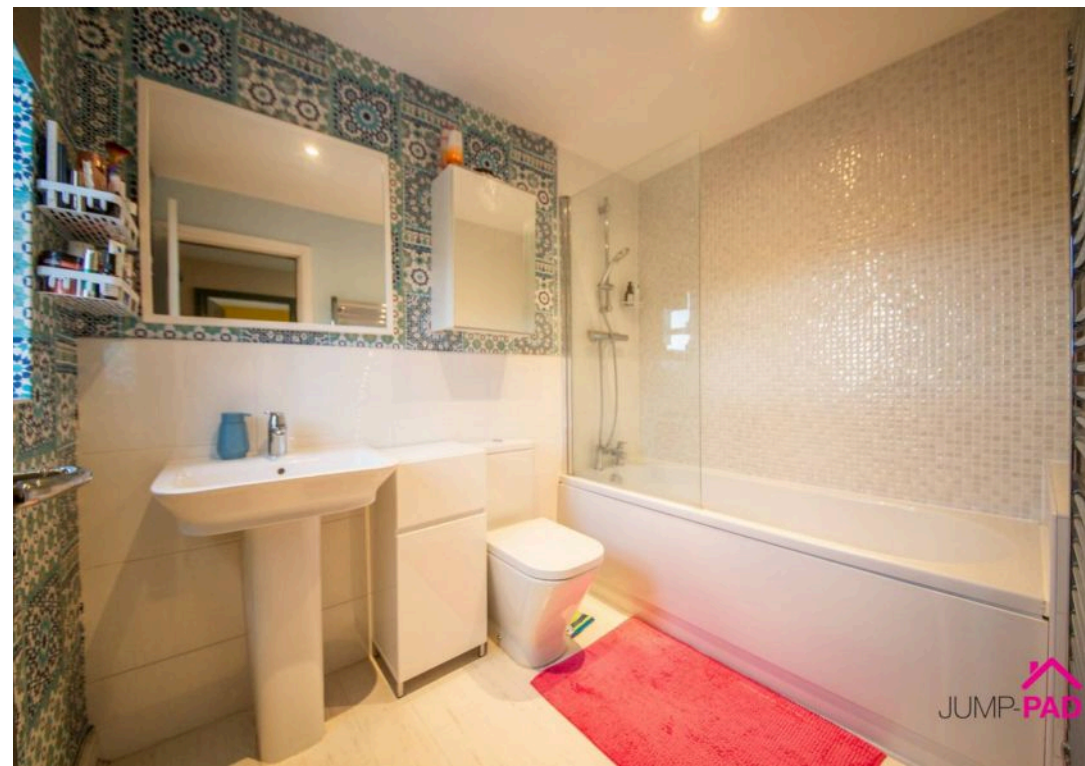
- 4 Bedroom detached property. Overlooking a field to the side elevation
- A dual-aspect Open-plan Kitchen/Dining room
- A spacious Living room and Large Orangery with roof lantern
- Secluded Morris Homes development, walking distance to the High Street









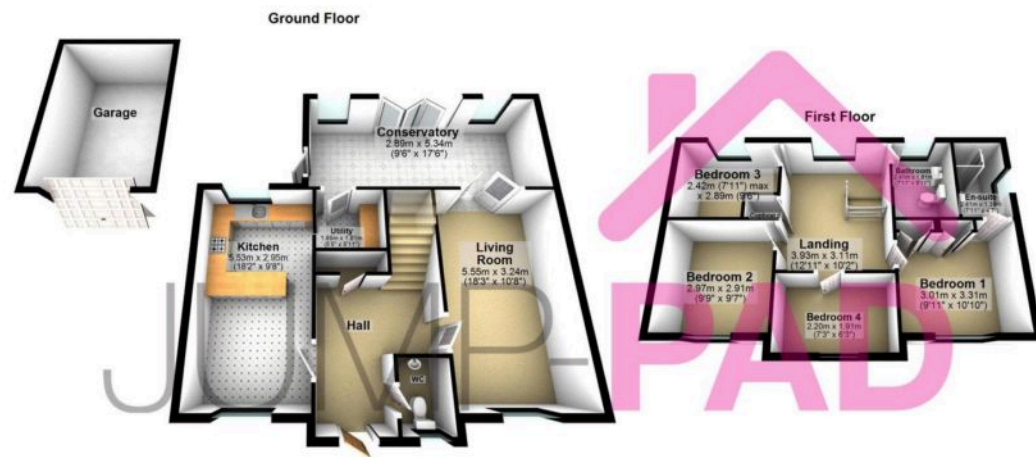






Whilst we endeavour to ensure the accuracy of this floor plan, all measurements are approximate and no responsibility is taken for any error, omission or misstatement. This plan is for illustration purposes only and may not be representative of the property. Plan not to scale. Specifically no guarantee is given on the total square footage / measure of the property if shown on this plan. Any figure given is for initial guidance only and should not be relied on as a basis of valuation.

Plan produced using PlanUp.



Whilst we endeavour to ensure the accuracy of this floor plan, all measurements are approximate and no responsibility is taken for any error, omission or misstatement. This plan is for illustration purposes only and may not be representative of the property. Plan not to scale. Specifically no guarantee is given on the total square footage / measure of the property if shown on this plan. Any figure given is for initial guidance only and should not be relied on as a basis of valuation.

Plan produced using PlanUp.