



Flat 5

Fourdrinier Court London Road, High Wycombe

- Living Room, South Facing Balcony Overlooking River
- Two Bedrooms, Bathroom & Ensuite Shower Room
- Double Glazing, Gas Radiator Heating, Gardens
- Two Allocated Parking Spaces, Share of Freehold
- Popular Location to East of High Wycombe
- Communal Entrance, Entrance Hall, Kitchen

Council Tax band: D

Tenure: Share of Freehold

EPC Energy Efficiency Rating: C

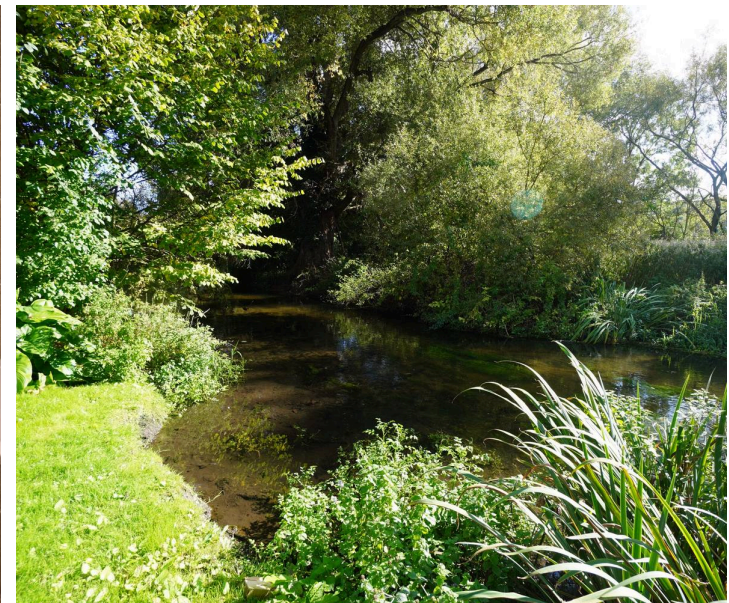
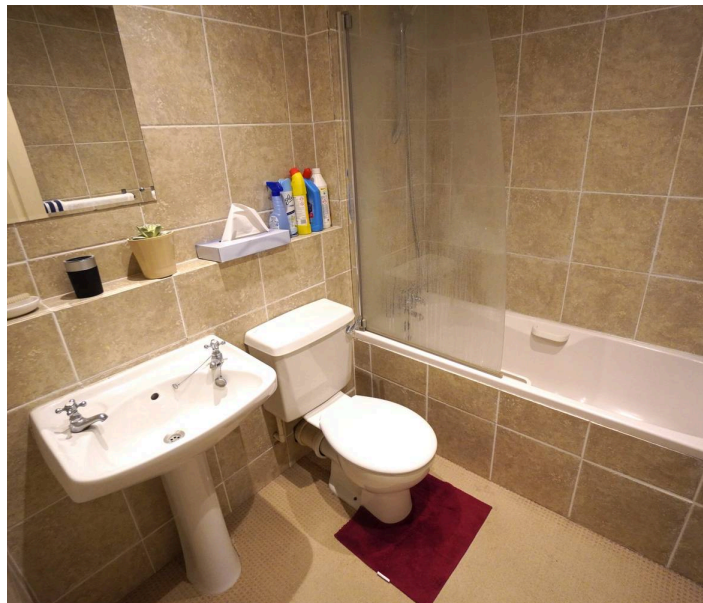
EPC Environmental Impact Rating: B

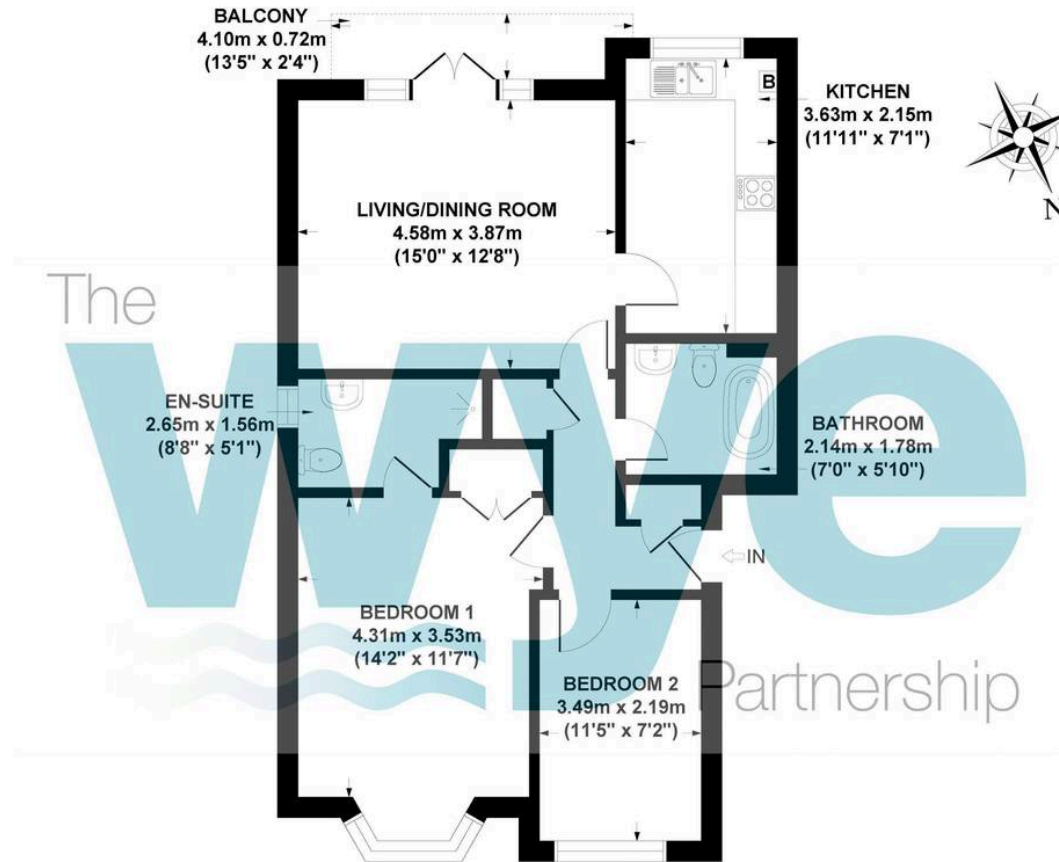


Flat 5

Fourdrinier Court London Road, High Wycombe

A spacious and well presented, first floor apartment in a popular location to the East of High Wycombe. Offering a lovely outlook from the rear balcony over communal gardens and the River Wye behind. Convenient for both J3 of the M40 and the town centre the accommodation briefly comprises; communal entrance, entrance hall, living room with balcony, kitchen, two bedrooms, bathroom, ensuite shower room, gas radiator heating, double glazing, communal gardens, two allocated parking spaces and share of freehold.





GROSS INTERNAL
FLOOR AREA 68 SQ M / 730 SQ FT

FOURDRINIER COURT, LONDON ROAD, HIGH WYCOMBE, HP11 1LB
APPROX. GROSS INTERNAL FLOOR AREA 68 SQ M / 730 SQ FT

FLOOR PLAN IDENTIFICATION PURPOSES ONLY -NOT TO SCALE

The Wye Partnership High Wycombe

Wye House, 15 Crendon Street, High Wycombe - HP13 6LE

01494 451300 • wylcombe@wyeres.co.uk • www.wyeres.co.uk/

