



Please be aware that we are no longer
accepting enquiries for this property.

Please get in touch to see what other properties we have available.

10 Sketchley Street, Nottingham – NG3 3DX

Guide Price **£130,000**

DavidJames
the estate agent



10 Sketchley Street

Nottingham, Nottingham

3-bed mid-terraced house offered with no chain - ideally positioned for convenient access to Nottingham City Centre! Good-sized lounge, kitchen & first floor bathroom plus a southerly-facing garden!

Council Tax band: A

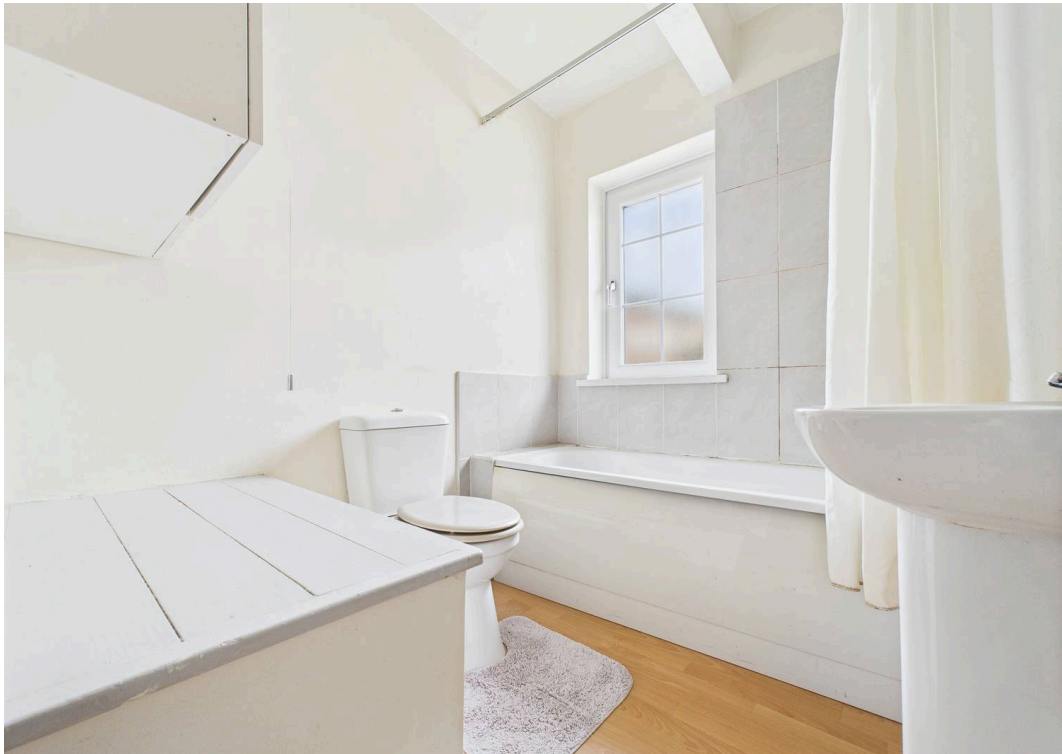
Tenure: Freehold

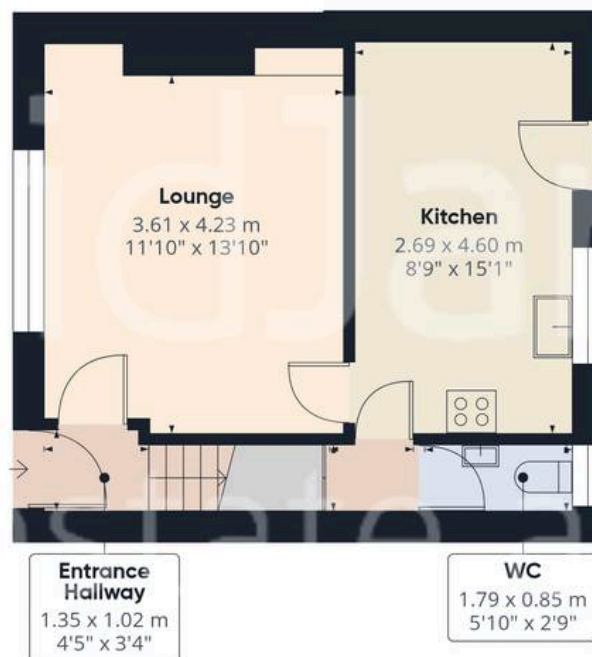
EPC Energy Efficiency Rating: D

EPC Environmental Impact Rating:

- Mid-terrace house
- Offered to the market with no upward chain
- Conveniently positioned for access to the nearby Nottingham City Centre
- A short walk from frequent bus services and local shops
- Good-sized lounge with a feature gas fire
- Kitchen with a range of fitted units and space for casual dining
- Convenient downstairs WC
- Three first floor bedrooms
- First floor bathroom with a three-piece white suite
- Low-maintenance south-westerly facing rear garden







Floor 0



Floor 1

Approximate total area⁽¹⁾

66.1 m²

710 ft²

(1) Excluding balconies and terraces

Calculations reference the RICS IPMS 3C standard. Measurements are approximate and not to scale. This floor plan is intended for illustration only.

GIRAFFE360



David James Estate Agents

376 Carlton Hill, Carlton - NG4 1JA

0115 987 8957 • carlton@david-james.com • www.david-james.com

These particulars are produced in good faith and are set out as a general guide only. Measurements are approximate and floor plans are for illustrative purposes only. Services have not been tested. We have established professional relationships with third-party suppliers for the provision of services to Clients, details of which can be found on the property listing page on our website.