



Melville Court Croft Street, London
London

£400,000

OLIVER *O* JAQUES
EST. 1986

Melville Court, Croft Street, London

Lease end date: 25/03/2108 (The lease is looking to be extended by a further 90 years which will round the length to 172 years.)

This well presented, first floor apartment in Melville Court lies on a quiet side-street in Surrey Quays. Well maintained, the property enjoys a naturally bright living area with Juliette Balcony, two spacious double bedrooms and separate bathroom.

The property is also close to local amenities and benefits from quick transport links to get into The City and Canary Wharf with Surrey Quays Overground Station 0.3 Miles away, Canada Water Underground Station 0.7 Miles away and Surrey Quays Shopping Centre just 0.4 Miles away.

Council Tax band: C

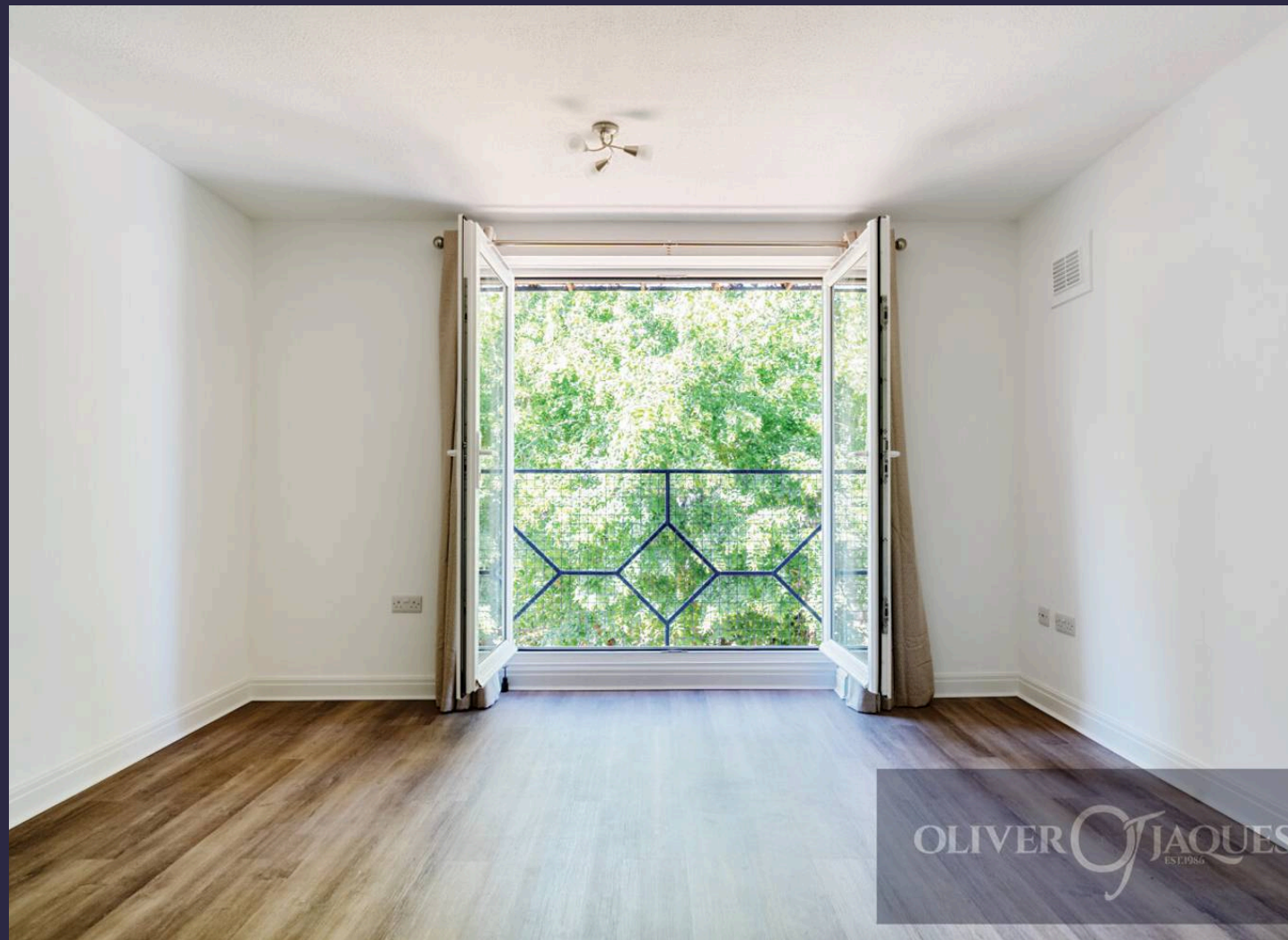
Tenure: Leasehold

Ground Rent: £200 PA

Service Charge: £1,509.23 PA (reserve fund £203.12 PA)

EPC Energy Efficiency Rating: C

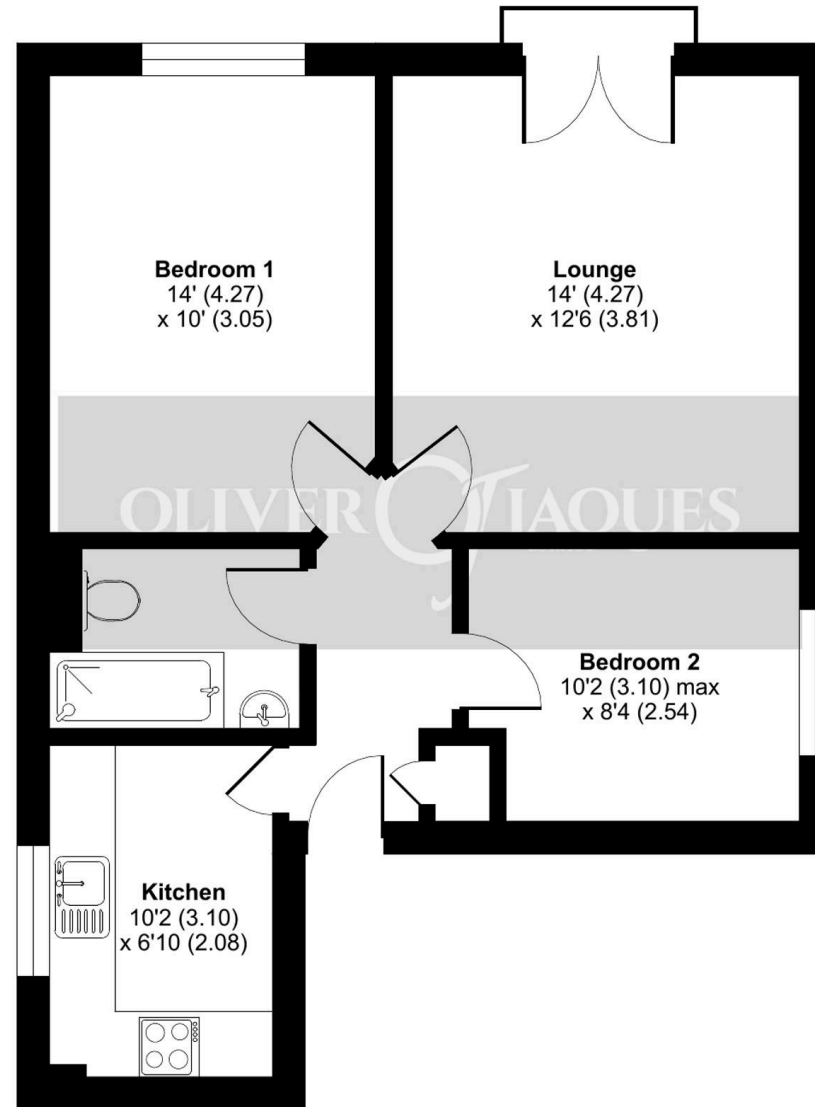
- Close to Local Amenities
- 0.3 Miles to Surrey Quays Overground Station
- 0.7 Miles to Canada Water Underground Station
- Two Bedrooms
- Juliette Balcony
- 0.4 Miles to Surrey Quays Shopping Centre
- Private Garage 16'10" x 7'4"



Melville Court, Croft Street, London, SE8

Approximate Area = 578 sq ft / 53.6 sq m

For identification only - Not to scale



FIRST FLOOR



Floor plan produced in accordance with RICS Property Measurement 2nd Edition, Incorporating International Property Measurement Standards (IPMS2 Residential). © n/checom 2025. Produced for Oliver Jaques. REF: 1321009



Oliver Jaques

Oliver Jaques, 229-231 Lower Road - SE16 2LW

02072315050 • southeast@o-j.co.uk • o-j.co.uk/

Every care has been taken with the preparation of this brochure but it is for general guidance and complete accuracy can't be guaranteed. Prospective purchasers should seek clarification from their solicitor. The mention of any appliances fixtures or fittings does not imply they are in working order.