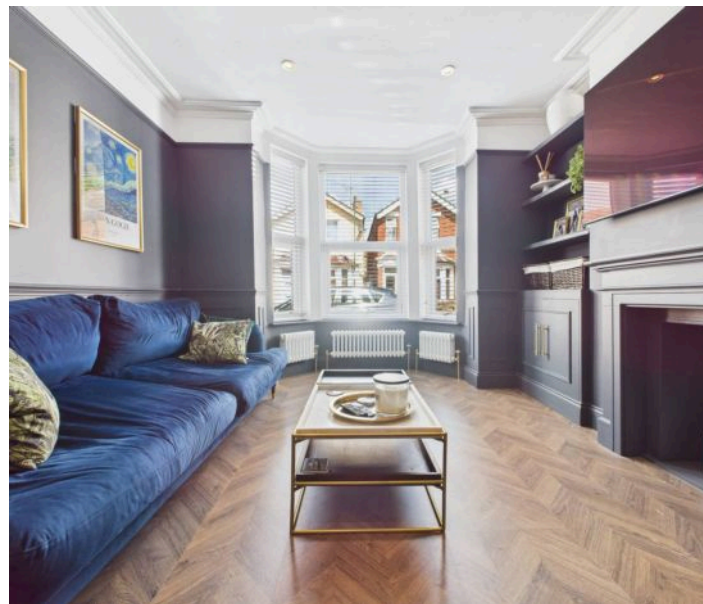
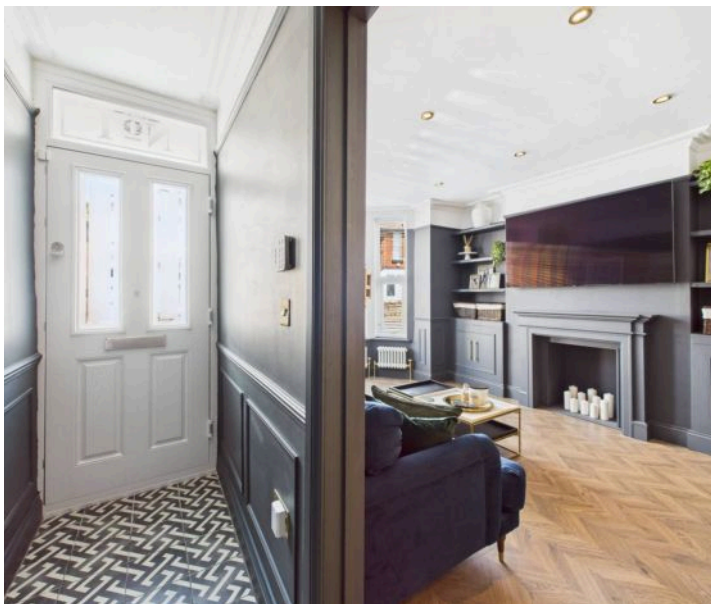




1 Abbey Grove, Nottingham - NG3 3AU

Guide Price £210,000 - £220,000

DavidJames
the estate agent



1 Abbey Grove

Nottingham

GUIDE PRICE £210,000-£220,000 Beautifully-presented detached family home available with no chain - blending period charm with modern design and ideally positioned for access to Nottingham City Centre!

Council Tax band: A

Tenure: Freehold

EPC Energy Efficiency Rating: D

EPC Environmental Impact Rating: E

- Detached family home with stylish and contemporary finishes
- Close to local amenities, schools and transport links to the nearby Nottingham City Centre
- Elegant entrance hall with tiled flooring and feature wall panelling
- Cosy and welcoming lounge with lots of period-style charm
- Beautiful kitchen with Quartz worktops, integrated appliances and a range cooker
- Spacious utility room off kitchen with garden access
- Large two-section cellar providing storage or further potential
- Three first floor bedrooms
- Superb first floor shower room with a large feature walk-in shower enclosure
- Smart-home features include Hive heating, remote lighting and an alarm system
- Vehicle hardstanding and permit-parking







Floor -1



Floor 0

Approximate total area⁽¹⁾

102.6 m²

1107 ft²



Floor 1

(1) Excluding balconies and terraces

Calculations reference the RICS IPMS 3C standard. Measurements are approximate and not to scale. This floor plan is intended for illustration only.

GIRAFFE360



David James Estate Agents

376 Carlton Hill, Carlton - NG4 1JA

0115 987 8957 • carlton@david-james.com • www.david-james.com

These particulars are produced in good faith and are set out as a general guide only. Measurements are approximate and floor plans are for illustrative purposes only. Services have not been tested. We have established professional relationships with third-party suppliers for the provision of services to Clients, details of which can be found on the property listing page on our website.