

THE MARKET QUARTER AT HATHERLEIGH
1 & 2 BEDROOM APARTMENTS
COMMERCIAL UNITS



THE MARKET QUARTER

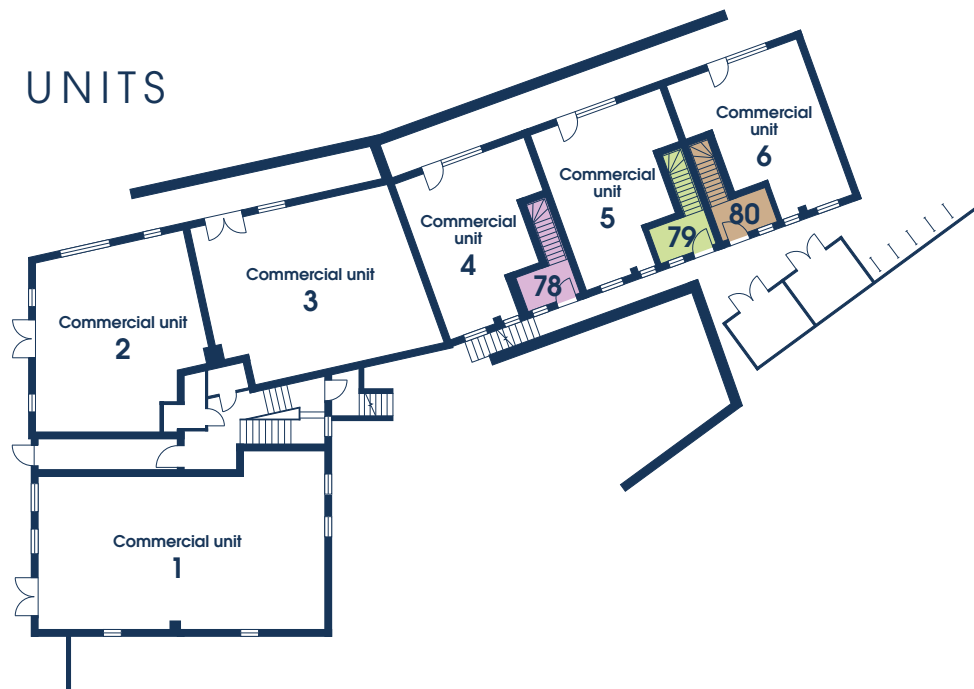
Enjoy a prime position in the heart of the Devon town of Hatherleigh. Well-suited to a range of buyers including first time buyers, downsizers and as a lock up and leave solution, the apartments are sure to be popular.



COMMERCIAL UNITS

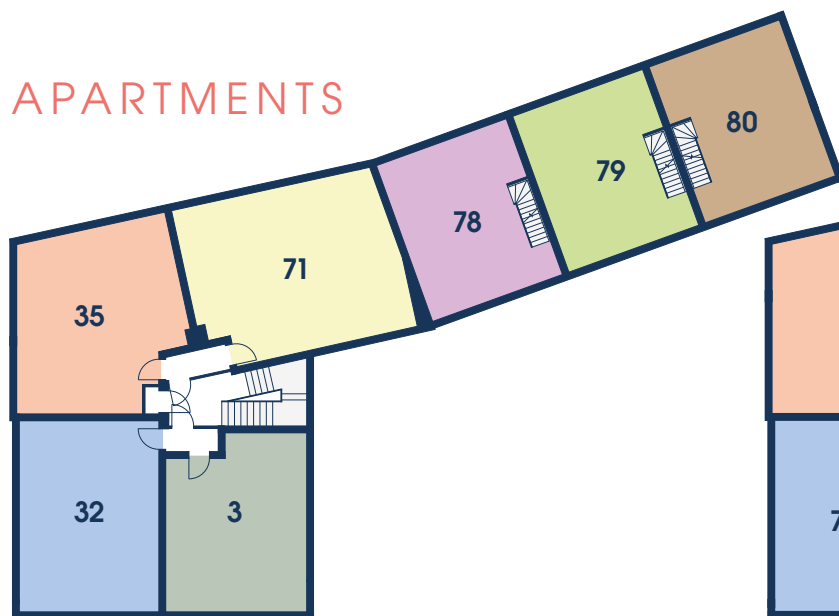
Ground floor

- 1 986sqft
- 2 606sqft
- 3 729sqft
- 4 391sqft
- 5 389sqft
- 6 396sqft

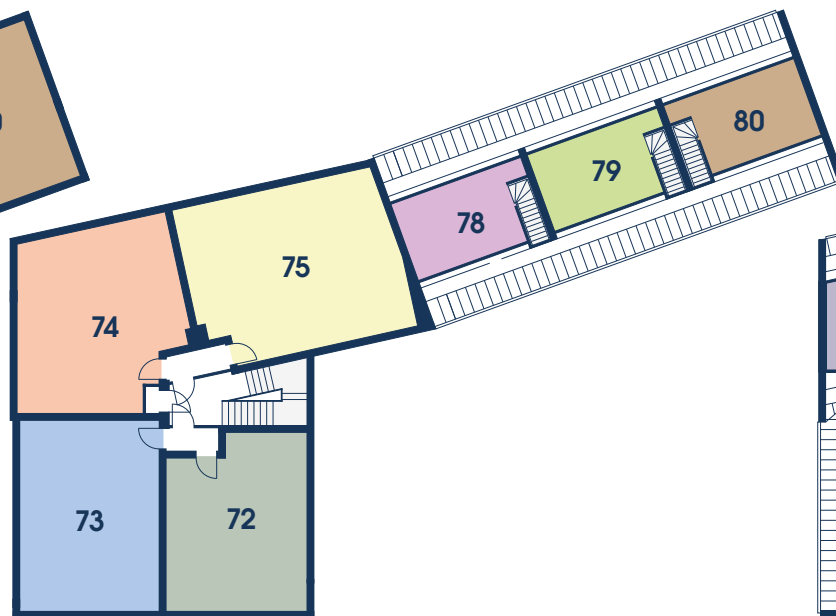


- 3 1 bedroom apartment
- 32 1 bedroom apartment
- 35 1 bedroom apartment
- 71 2 bedroom apartment
- 72 1 bedroom apartment
- 73 1 bedroom apartment
- 74 1 bedroom apartment
- 75 2 bedroom apartment
- 76 2 bedroom apartment
- 77 2 bedroom apartment
- 78 2 bedroom duplex apartment
- 79 2 bedroom duplex apartment
- 80 2 bedroom duplex apartment

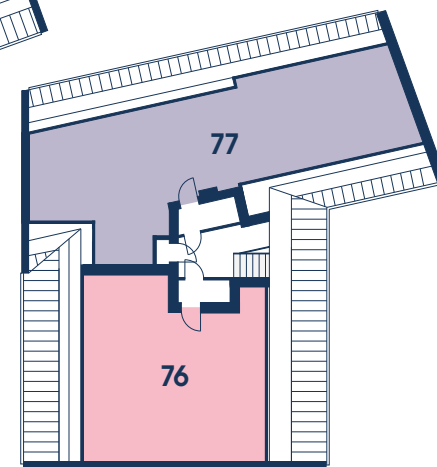
APARTMENTS



First floor



Second floor



Third floor





SPECIFICATION

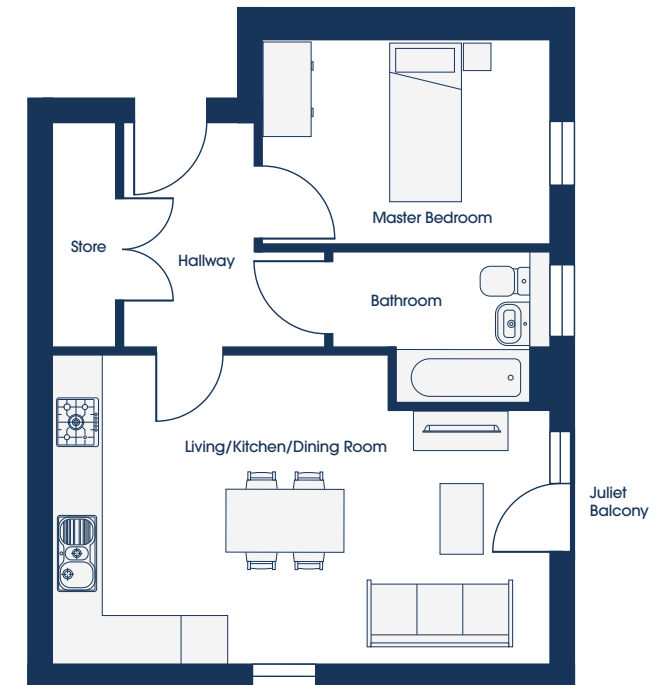
We take pride in providing a high quality specification as standard in each and every home we build and the apartments at The Market Quarter are no exception. You will have the opportunity to select from a range of options including the finish of your new kitchen and the tiles in your bathroom. There's also the chance to upgrade your choices to even more luxurious fixtures and fittings.

CLEVERLY DESIGNED HOMES

Making the most of the space available, they feature open plan living spaces with combined kitchen, dining and living areas. Two-bedroom apartments boast two bathrooms, perfect for when friends or family visit. Those who don't need two bedrooms could use one as a study. One-bedroom apartments feature plenty of storage space. Selected apartments benefit a Juliet balcony, helping bring the outside inside.



FLOORPLANS



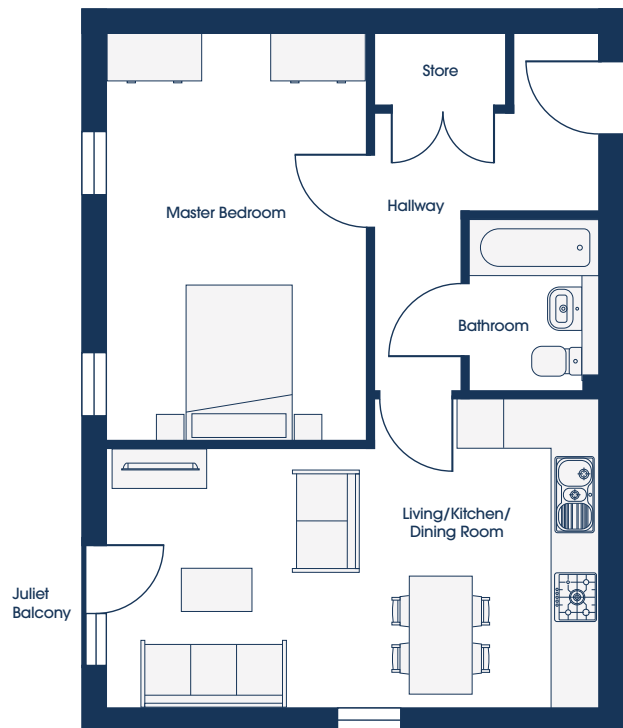
APARTMENT 3 & 72



Kitchen/Dining/Living	6.19m* x 3.88m*	20'4"* x 12'9"*
Master Bedroom	3.59m x 2.62m	11'10" x 8'7"
Bathroom	2.73m* x 1.92m*	8'11"* x 6'3"*

Apartment 3 shown, juliet balcony not available to apartment 72, please ask for details.

* maximum dimensions

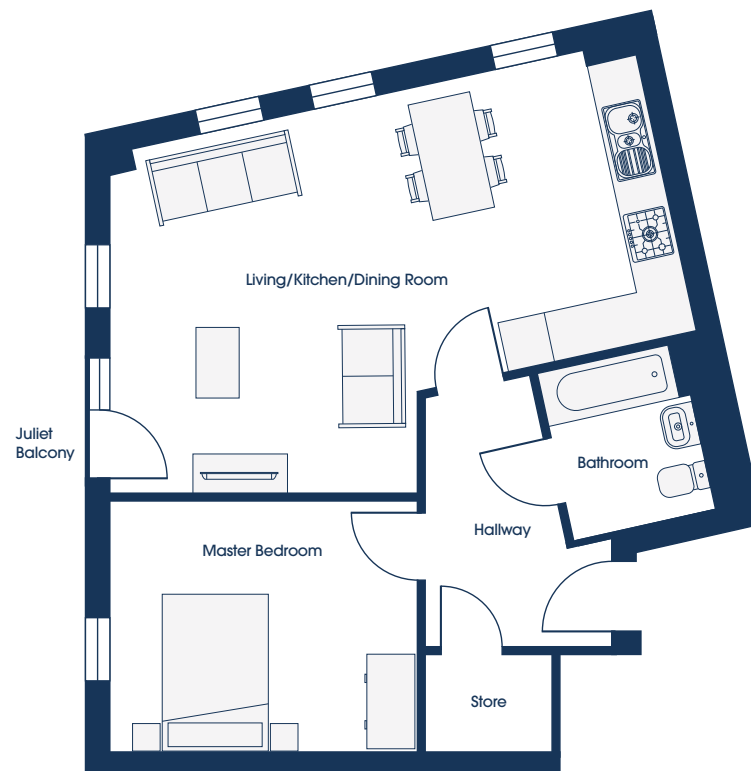


APARTMENT 32 & 73



Kitchen/Dining/Living	6.19m* x 3.88m*	20'4" x 12'9"*
Master Bedroom	3.21m x 5.15m	10'6" x 16'11"
Bathroom	1.70m* x 2.19m*	5'7" x 7'2"*

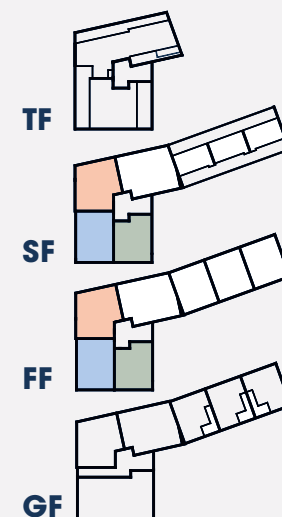
Apartment 32 shown, juliet balcony not available to apartment 73, please ask for details.

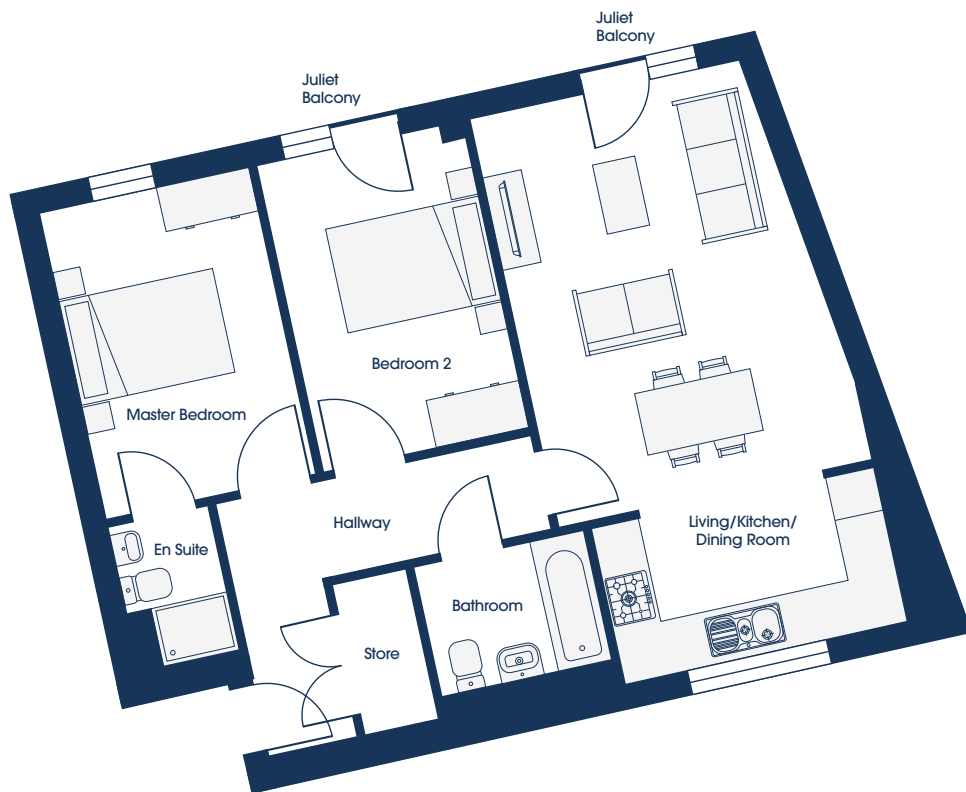


APARTMENT 35 & 74



Kitchen/Dining/Living	7.62m* x 5.58m*	25'0" x 18'4"*
Master Bedroom	3.82m x 3.13m	12'6" x 10'3"
Bathroom	1.90m* x 2.11m*	6'3" x 6'11"*

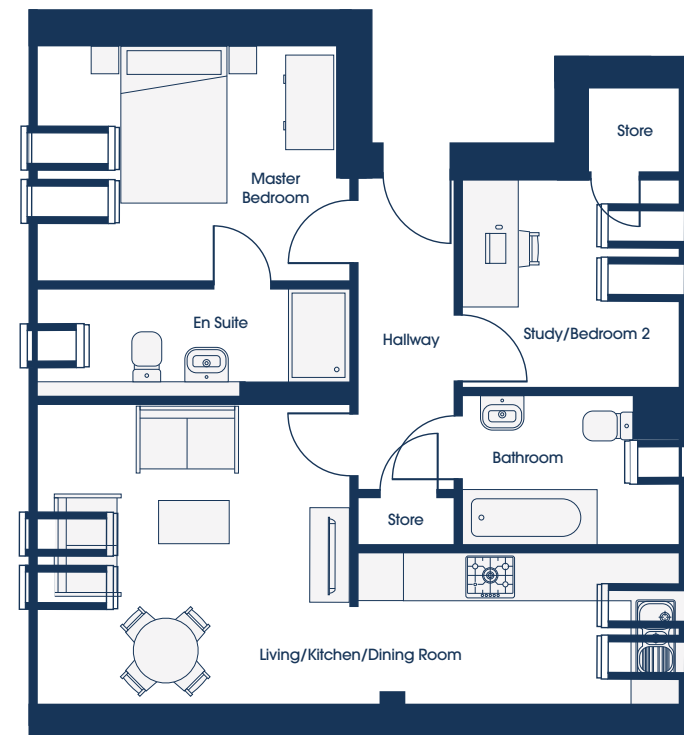




APARTMENT 71 & 75

Kitchen/Dining/Living	4.14m* x 7.37m*	13'7" x 24'2"*
Master Bedroom	2.70m x 3.88m	8'10" x 12'9"
En Suite	1.26m* x 1.95m*	4'2" x 6'5"*
Bathroom	2.22m x 1.70m	7'3" x 5'7"
Bedroom 2	2.66m x 3.88m	8'9" x 12'9"

Apartment 71 shown, juliet balcony not available to apartment 75, please ask for details.



APARTMENT 76^

Kitchen/Dining/Living	7.04m* x 3.90m*	23'1" x 12'9"*
Master Bedroom	3.37m x 3.03m	11'1" x 9'11"
En Suite	3.37m x 1.19m	11'1" x 3'11"
Study/Bedroom 2	2.28m x 2.80m	7'6" x 9'2"
Bathroom	2.28m x 1.91m	7'6" x 6'3"

^ Head height is reduced in places due to sloping roof sloping roof

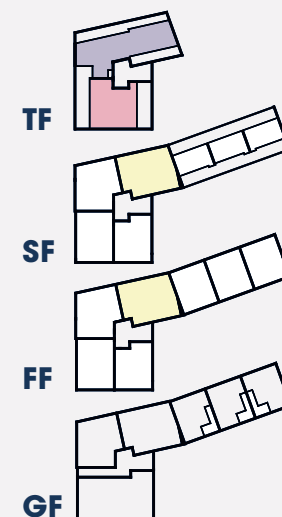


APARTMENT 77^



Kitchen/Dining/Living	6.01m* x 6.71m*	19'9"* x 22'0"*
Master Bedroom	3.76m* x 4.21m*	12'4"* x 13'10"*
En Suite	1.65m x 1.78m	5'5"* x 5'10"
Bedroom 2	3.33m x 2.90m	10'11" x 9'6"
Bathroom	2.30m* x 2.60m*	7'6"* x 8'6"*

^ Head height is reduced in places due to sloping roof sloping roof





Ground floor

First floor

Second floor



APARTMENT 78 & 79



Kitchen/Dining/Living	4.15m* x 7.33m*	13'8"* x 24'11"*
Master Bedroom	4.09m* x 3.65m*	13'5"* x 12'0"*
En Suite	2.15m x 1.55m	7'1" x 5'1"
Bedroom 2	2.80m x 2.72m	9'2" x 8'11"
Bathroom	2.19m x 1.89m	7'2" x 6'2"

Apartment 78 shown, window in living room is smaller to apartment 79, please ask for details.



APARTMENT 80

2 2

Kitchen/Dining/Living	4.15m* x 7.33m*	13'8"* x 24'11"*
Master Bedroom	4.05m* x 3.64m*	13'3"* x 11'11"*
En Suite	2.17m x 1.55m	7'2" x 5'1"
Bedroom 2	2.82m x 2.72m	9'3" x 8'11"
Bathroom	2.20m x 1.89m	7'3" x 6'2"



Better. All Round.

01837 352001 • kingswoodhomes.uk.com

Customers should note this illustration is an example of the house type. All dimensions indicated are approximate and the furniture layout is for illustrative purposes only. Drawing is not to scale. Homes may be 'handed' (mirror image) versions of the illustrations. Materials used may differ from plot to plot including render and roof tile colours. Detailed plans and specifications are available for inspection for each plot at our Sales Centre during working hours and customers must check their individual specifications prior to making a reservation.