



11 Clos de L'abri La Grande Route De La Cote, St. Clement

BROADLANDS

FINDING YOU A HOME SINCE 1972

11 Clos de L'abri La Grande Route De La Cote

St. Clement, Jersey

- Large First time buyers house 2,192 sq ft
- 5/6 bedroom, 3 bathroom home
- Skillfully and extensively extended 3 years ago
- Sunny low maintenance garden
- 3 designated parking spaces and ample visitor parking
- 2 receptions and a utility room
- Eat in kitchen
- Sole agents
- No onward chain
- Across the road from Green Island beach
- Call Doug on 07700702585 or doug@broadlandsjersey.com



11 Clos de L'abri La Grande Route De La Cote

St. Clement, Jersey

First time buyers only - a substantial 5/6 bedroom well presented house in a popular location. The house is ideal for a young family with lots of children. Set across from the beach at Green Island, the property was extensively extended 3 years ago creating this wonderful spacious home. On the ground floor you have a large entrance hall, two double bedrooms and two bathrooms one being an en-suite and a generous utility room with patio doors into your garden. On the first floor you have a lounge, eat in kitchen with a full range of integrated appliances, a double bedroom and an additional versatile room which could be a snug or 6th bedroom. On the second floor you have two double bedrooms and one with a En-suite bathroom. The enclosed sunny low maintenance garden is a safe place for young children to play, and provides lots of space for adults to relax. With three designated parking spaces and additional visitor parking available. Situated in the catchment area for St Clements primary and Le Rocquier secondary school and on a regular bus route. This could be just be the home for you.





Living

Eat in kitchen with full range of integrated appliances, snug, generous lounge and a utility room.

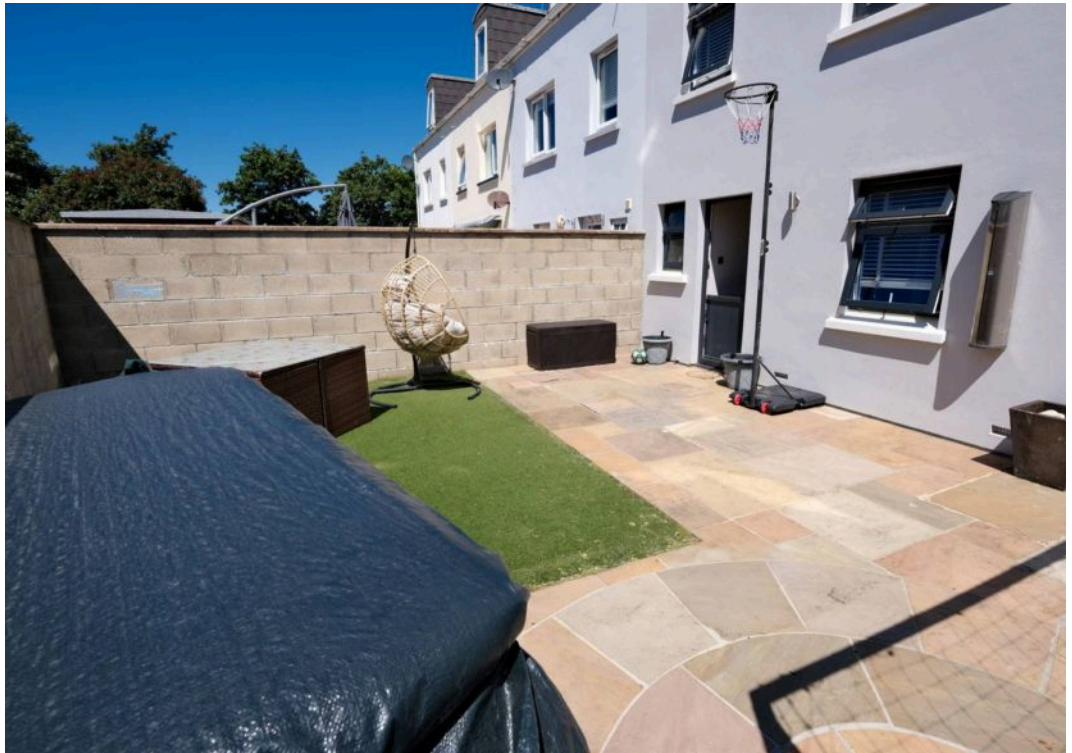
Sleeping

5/6 bedrooms, 3 bathrooms, 2 being En-suites.

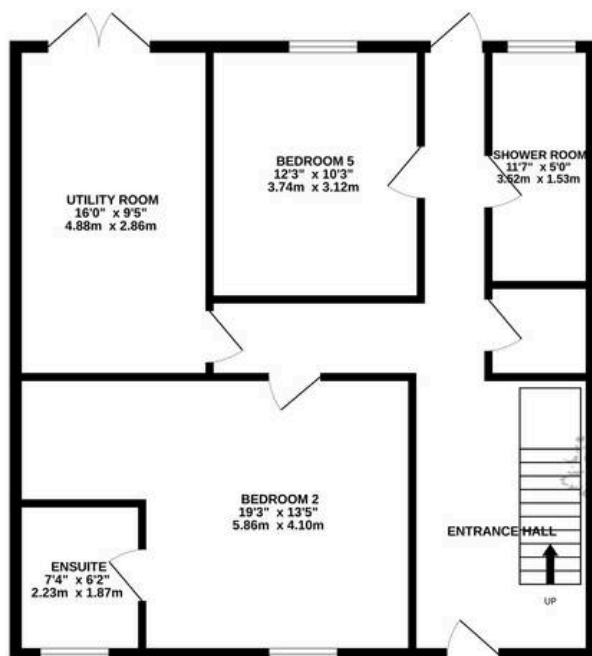
Services

All main services. Double glazing and electric heating.

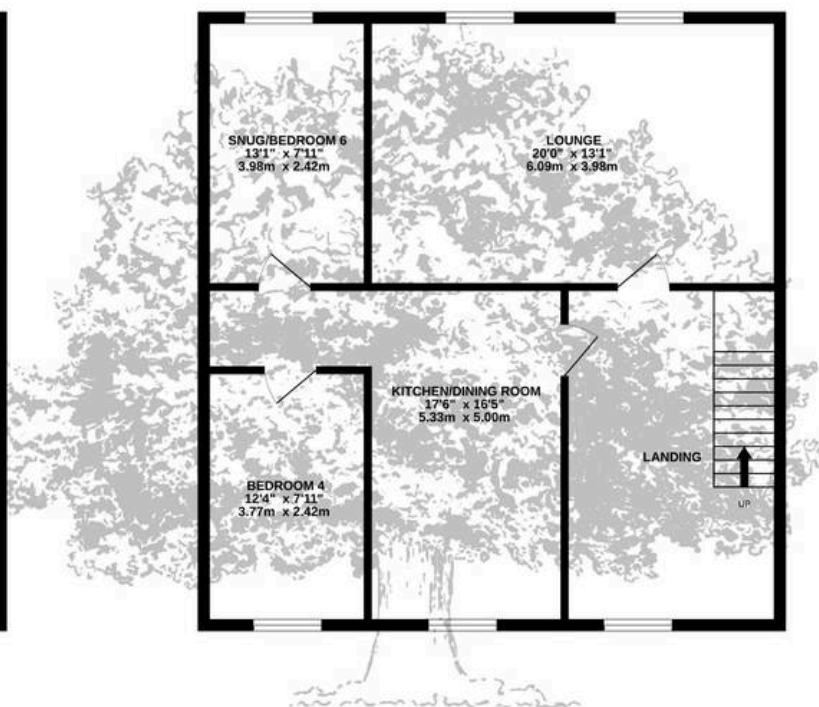




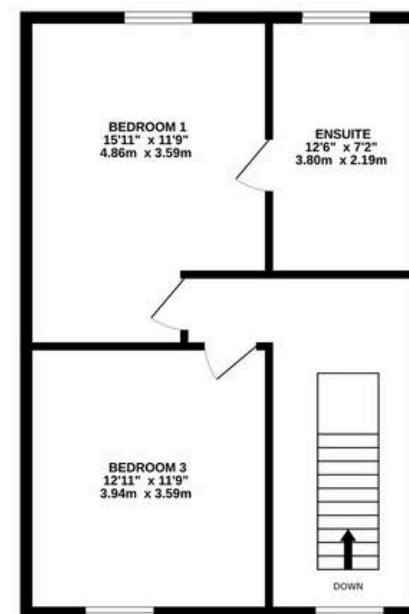
GROUND FLOOR
822 sq.ft. (76.4 sq.m.) approx.



1ST FLOOR
822 sq.ft. (76.4 sq.m.) approx.



2ND FLOOR
547 sq.ft. (50.8 sq.m.) approx.



TOTAL FLOOR AREA : 2192 sq.ft. (203.6 sq.m.) approx.

Whilst every attempt has been made to ensure the accuracy of the floorplan contained here, measurements of doors, windows, rooms and any other items are approximate and no responsibility is taken for any error, omission or mis-statement. This plan is for illustrative purposes only and should be used as such by any prospective purchaser. The services, systems and appliances shown have not been tested and no guarantee as to their operability or efficiency can be given.

Made with Metropix ©2025



Broadlands Estates, Library Place - JE2 3NL

BROADLANDS
FINDING YOU A HOME SINCE 1972