



THE STOCKWOOD

4 bedroom home



FARRIER'S
FOLD
RUGELEY

CGI shows plot 13.
This is an artists impression and used for illustrative purposes only.

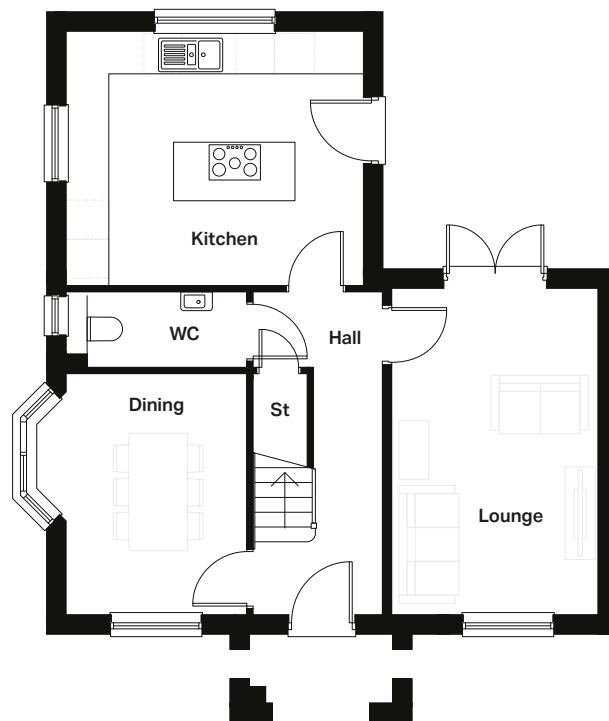




THE STOCKWOOD

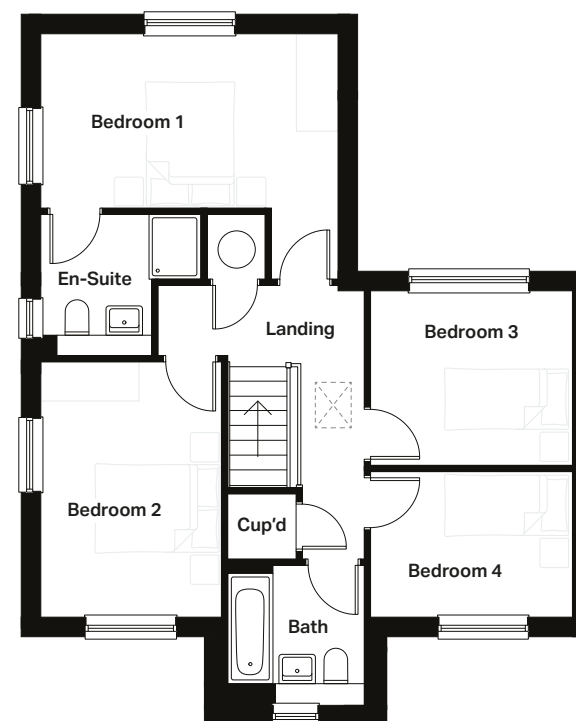
4 bedroom home

Plots 1, 13, 30



Ground Floor

Lounge 3113mm x 4910mm 10'3" x 16'1"
Kitchen 4460mm x 3845mm 14'8" x 12'7"
Dining 3196mm (max) x 3648mm 10'6" x 12'0"



First Floor

Bedroom 1 4460mm x 3715mm (max) 14'8" x 12'2"
En suite 2408mm x 2170mm 7'11" x 7'1"
Bedroom 2 2720mm x 3870mm 8'11" x 12'7"
Bedroom 3 3057mm x 2632mm 10'0" x 8'8"
Bedroom 4 3057mm x 2185mm 10'0" x 7'2"
Bathroom 2097mm x 2098mm 6'11" x 6'11"

Computer generated images (CGIs) are not intended to convey an accurate representation of a property, its description, its setting nor its immediate surroundings. Such images are created from an imaginary viewpoint in an area of clean, open space and have been created in a way that is designed to give an impression of the individual design of a particular house or may be used to convey a typical street scene and are not intended to give the impression that any particular home or development will necessarily look like any of the images. Images are for illustrative purposes and final elevations and materials may differ. Dimensions stated are within 50mm (2") but should not be used as a basis for furnishings, furniture or appliance spaces etc. Dimensions for such purposes must be verified against actual site measurements. Please note the handing of plots, door and window positions may vary from the floor plans shown. Please check individual plot details with our sales team.

LOVELL
HOMES

