



## THE LEASIDE 3 bedroom home



FARRIER'S  
FOLD  
RUGELEY

CGI shows plot 14.  
This is an artists impression and used for illustrative purposes only.



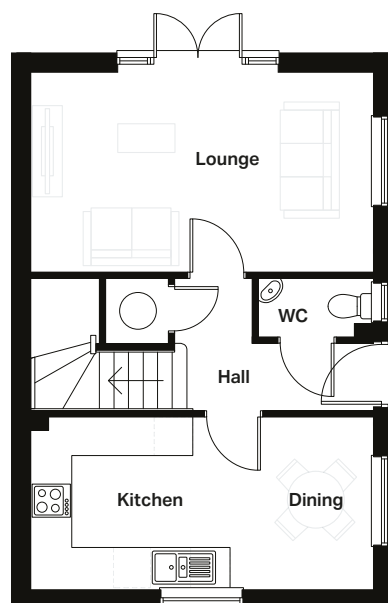




# THE LEASIDE

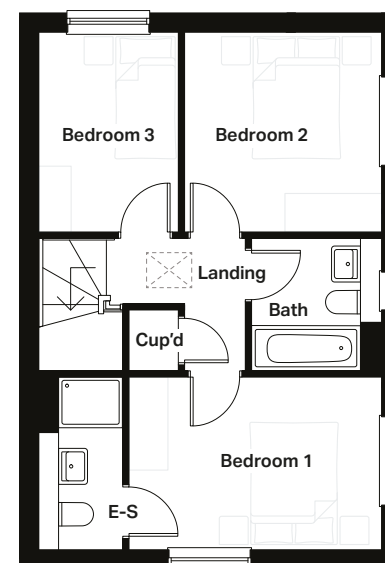
## 3 bedroom home

Plots 11, 14, 17, 53, 54



### Ground Floor

Lounge 5247mm x 3057mm 17'3" x 10'0"  
Kitchen/Dining 5247mm x 2636mm 17'3" x 8'8"



### First Floor

Bedroom 1 3877mm x 2636mm 12'9" x 8'8"  
En suite 1278mm x 2636mm 4'2" x 8'8"  
Bedroom 2 3013mm x 3057mm 9'11" x 10'0"  
Bedroom 3 2142mm x 3057mm 7'0" x 10'0"  
Bathroom 1970mm x 2068mm 6'6" x 6'9"

Computer generated images (CGIs) are not intended to convey an accurate representation of a property, its description, its setting nor its immediate surroundings. Such images are created from an imaginary viewpoint in an area of clean, open space and have been created in a way that is designed to give an impression of the individual design of a particular house or may be used to convey a typical street scene and are not intended to give the impression that any particular home or development will necessarily look like any of the images. Images are for illustrative purposes and final elevations and materials may differ. Dimensions stated are within 50mm (2") but should not be used as a basis for furnishings, furniture or appliance spaces etc. Dimensions for such purposes must be verified against actual site measurements. Please note the handing of plots, door and window positions may vary from the floor plans shown. Please check individual plot details with our sales team.

**LOVELL**  
HOMES

