



THE EATON

4 bedroom home



FARRIER'S
FOLD
RUGELEY



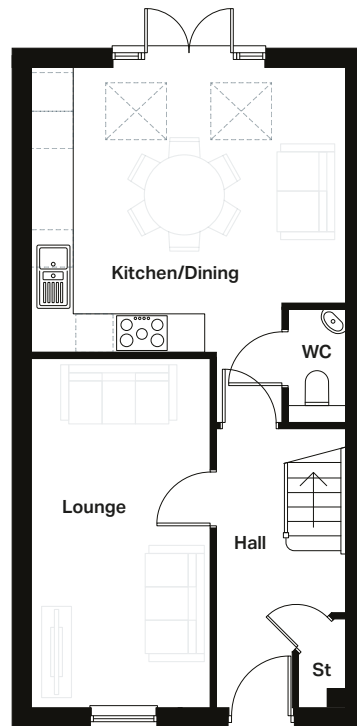
CGI shows plots 26 & 27
This is an artists impression and used for illustrative purposes only.



THE EATON

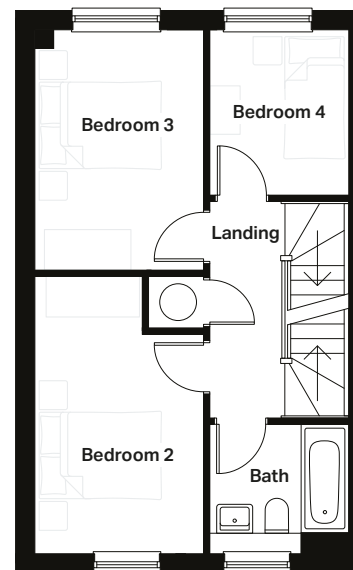
4 bedroom home

Plots 26 and 27



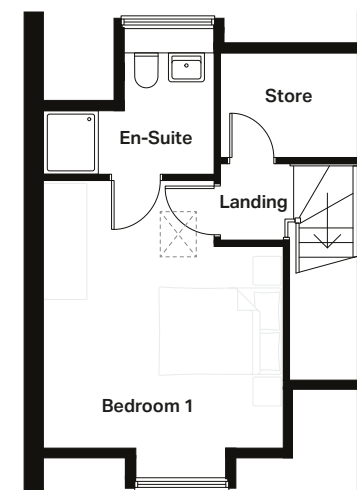
Ground Floor

Lounge 2735mm x 5385mm 8'12" x 17'8"
 Kitchen/Dining 4798mm x 4382mm 15'9" x 14'5"



First Floor

Bedroom 2 2580mm x 4270mm 8'6" x 14'0"
 Bedroom 3 2580mm x 3698mm 8'6" x 12'2"
 Bedroom 4 2125mm x 2533mm 7'0" x 8'4"
 Bathroom 2125mm x 1968mm 7'0" x 6'5"



Second Floor

Bedroom 1 3683mm x 4490mm 12'1" x 14'9"
 En suite 2605mm x 2285mm 8'7" x 7'6"

Computer generated images (CGIs) are not intended to convey an accurate representation of a property, its description, its setting nor its immediate surroundings. Such images are created from an imaginary viewpoint in an area of clean, open space and have been created in a way that is designed to give an impression of the individual design of a particular house or may be used to convey a typical street scene and are not intended to give the impression that any particular home or development will necessarily look like any of the images. Images are for illustrative purposes and final elevations and materials may differ. Dimensions stated are within 50mm (2") but should not be used as a basis for furnishings, furniture or appliance spaces etc. Dimensions for such purposes must be verified against actual site measurements. Please note the handing of plots, door and window positions may vary from the floor plans shown. Please check individual plot details with our sales team.

LOVELL
 HOMES