



**Greystones, Western Gate, Marlborough Road**  
Swindon

**£407,500**

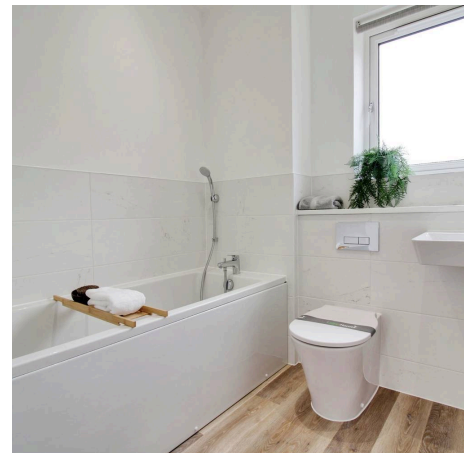
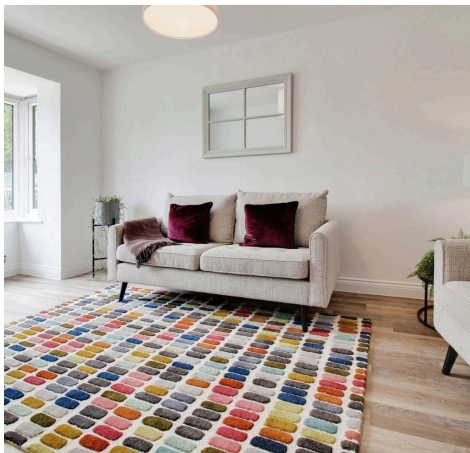




## Greystones, Western Gate

Marlborough Road, Swindon

Presenting a stunning **\*\*4 Bedroom Semi Detached House\*\*** poised to captivate discerning buyers seeking a new home replete with modern comforts and aesthetic appeal. This immaculate property, a **\*\*NEW HOME\*\***, is slated for occupancy in **\*\*Sept/Oct 2025\*\***, offering a harmonious blend of style and functionality across its **\*\*THREE STOREY SEMI DETACHED\*\*** layout. The ground floor welcomes you with a **\*\*LARGE OPEN PLAN KITCHEN / DINING ROOM\*\***, ideal for hosting gatherings and culinary adventures. Adjacent, the inviting **\*\*LIVING ROOM\*\*** boasts a charming box bay window, infusing the space with natural light and character. Ascend to the upper levels to discover the resplendent **\*\*MAIN BEDROOM SUITE\*\***, complete with an **\*\*ENSUITE\*\*** bathroom and fitted **\*\*WARDROBES\*\***, providing a private sanctuary for relaxation. Accompanying this are two **\*\*ADDITIONAL DOUBLE BEDROOMS\*\***, along with a single bedroom suitable for a study or nursery. A well-appointed **\*\*FAMILY BATHROOM\*\*** and convenient **\*\*WC\*\*** enhance the functionality of this exceptional abode, while the convenience of **\*\*TWO PARKING SPACES\*\*** ensures ease of access for residents.



## Hall

## Living

16' 4" x 9' 1" (4.98m x 2.78m)

## Kitchen

9' 5" x 8' 4" (2.86m x 2.53m)

## Dining

11' 10" x 6' 10" (3.61m x 2.09m)

## WC

## First Floor Landing

## Bedroom 2

13' 6" x 9' 1" (4.11m x 2.78m)

## Bedroom 3

12' 6" x 9' 1" (3.80m x 2.78m)

## Bedroom 4/Study

8' 4" x 6' 10" (2.53m x 2.08m)

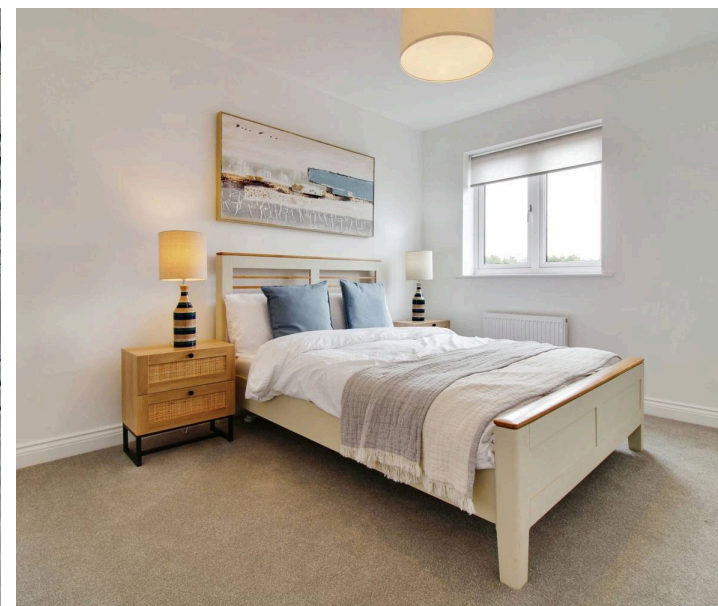
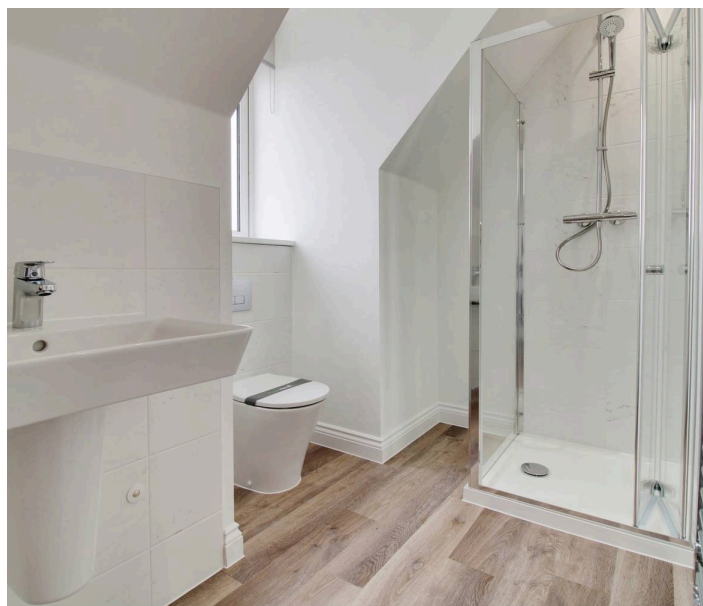
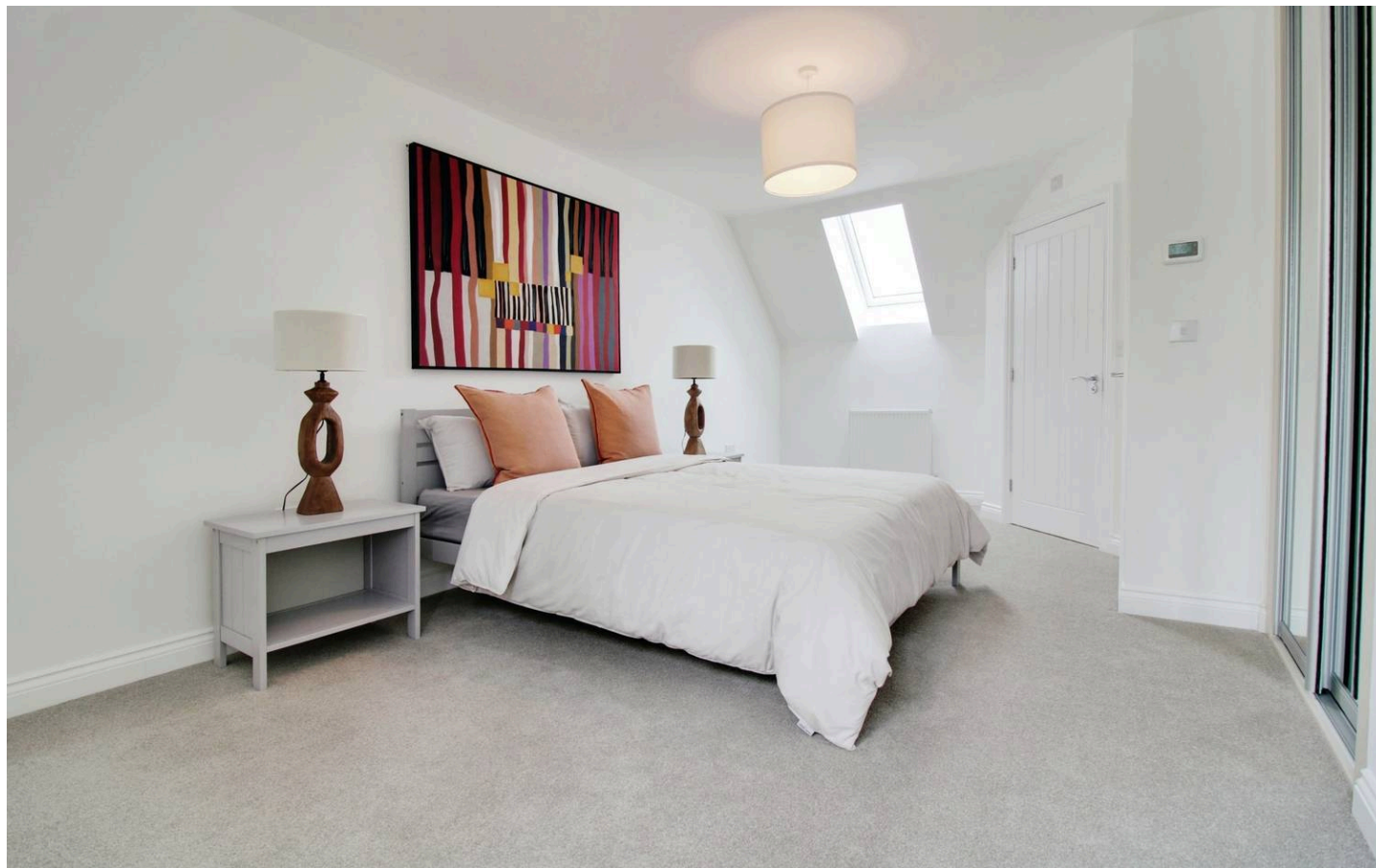
## Bathroom

## Second Floor Landing

## Bedroom 1

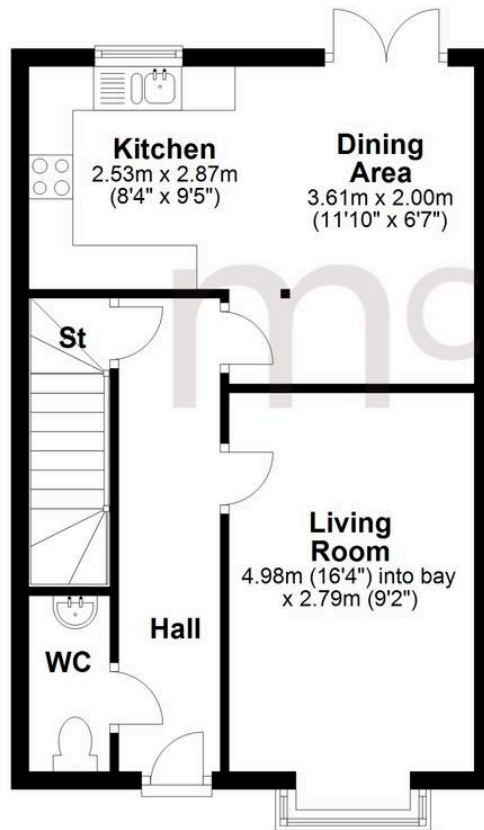
18' 5" x 10' 8" (5.62m x 3.24m)

## Bedroom 1 En-suite

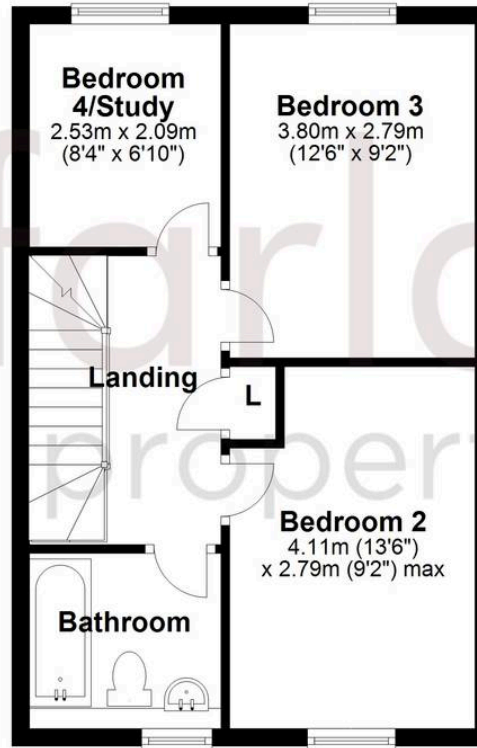




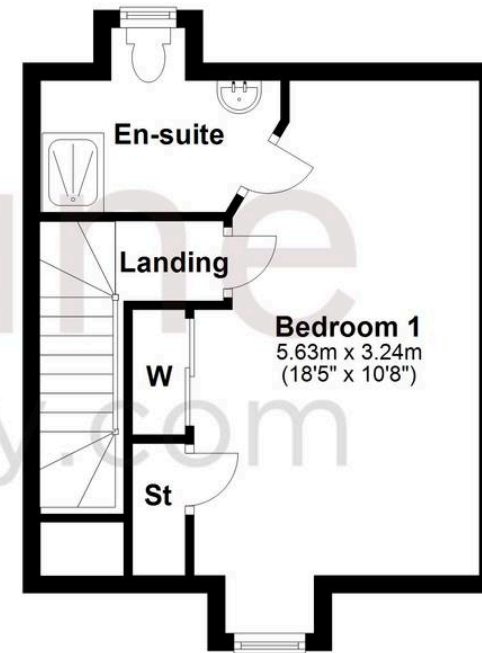
**Ground Floor**



**First Floor**



**Second Floor**



## McFarlane Sales & Lettings

Cricklade Sales, 36 High Street, Cricklade - SN6 6AY

01793 751044 • [cricklade@mcfarlaneproperty.com](mailto:cricklade@mcfarlaneproperty.com) • [www.mcfarlaneproperty.com/](http://www.mcfarlaneproperty.com/)