



21 Burgoyne Road, Southsea

Offers in Region of £450,000





21 Burgoyne Road

Southsea

Ideally located just moments from Southsea beach, this spacious five-bedroom townhouse offers a rare opportunity to modernise a substantial home to your own style. Set across four levels, the property boasts generous and versatile living space, sea air, garden views, and the added bonus of off-road parking.

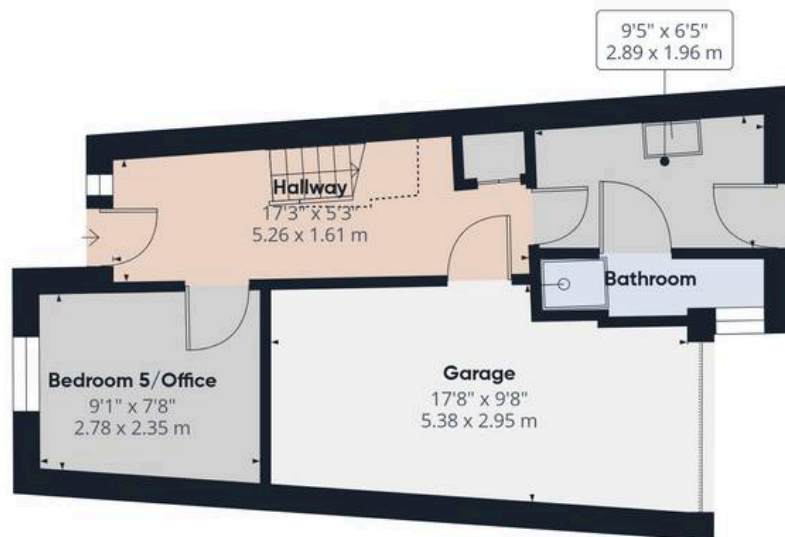
The ground floor includes an entrance hall, office or fifth bedroom, shower room, utility room, and access to both the garage and a private courtyard garden. On the first floor, a rear-facing kitchen and dining area open through double doors into a bright living room with views over communal lawns.

Upstairs are three bedrooms—one with en suite shower—and a modern family bathroom. The top floor features a light-filled loft bedroom with Velux windows and eaves storage.

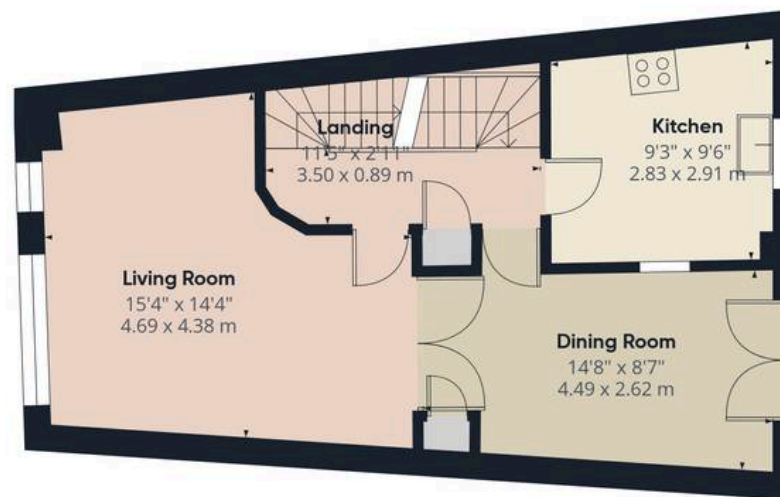
With scope for updating, this home offers huge potential in a highly sought-after seaside location.

Material Information: • Tenure: Freehold • Council Tax: D • Electricity: Mains Supply • Heating: Gas supply • Water Supply: Mains supply • Sewage: Mains Supply • Broadband: standard, Superfast and Ultrafast Fibre are all available in this area • Parking: Off Road & Permit Parking • Mobile: Ofcom official website checker states that EE, Vodafone, O2 and Three have all availability in the area • Flood Risk: Low risk

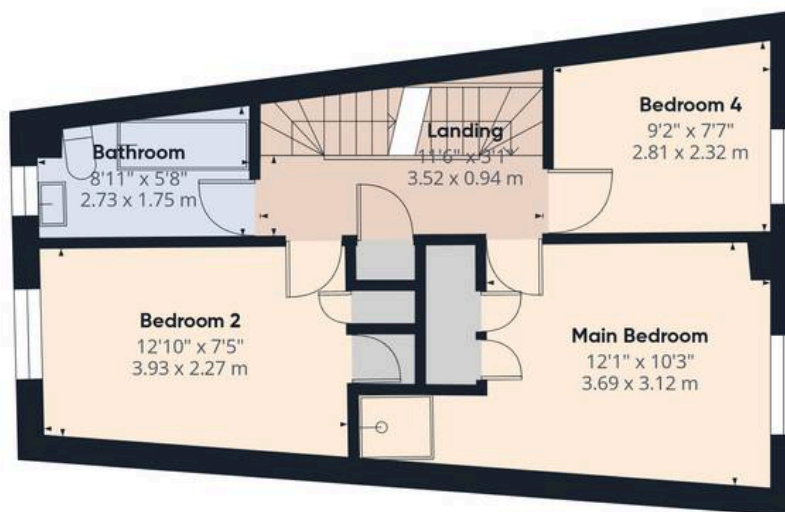




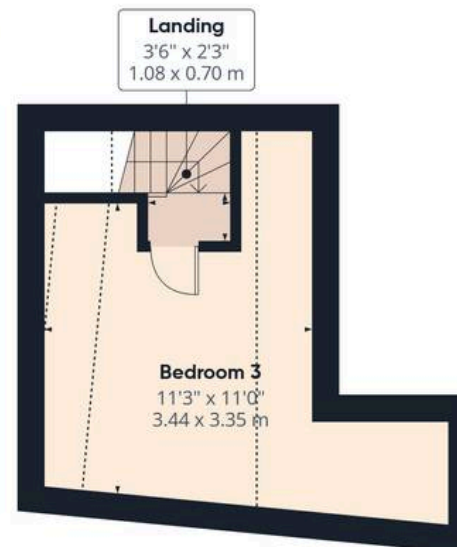
Ground Floor



Floor 1



Floor 2



Floor 3

Approximate total area⁽¹⁾

1424 ft²

132.4 m²

Reduced headroom

100 ft²

9.3 m²

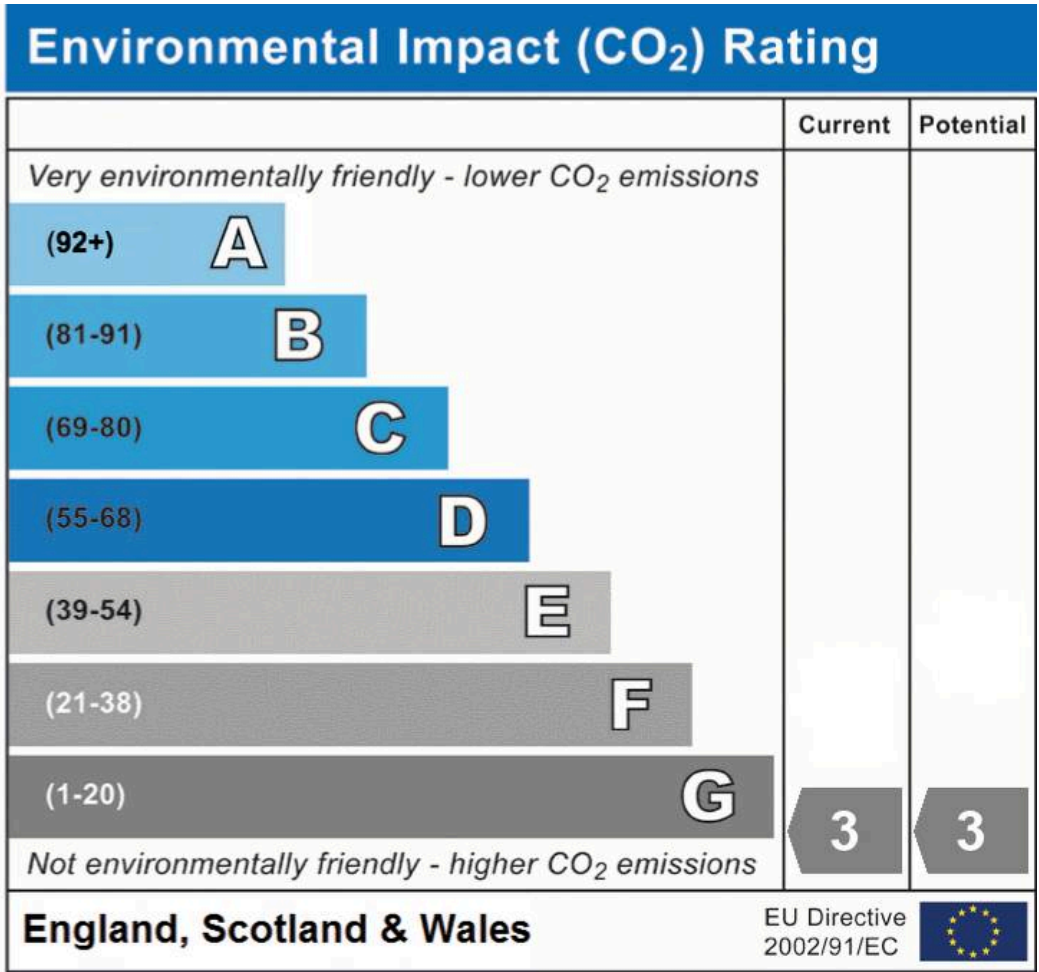
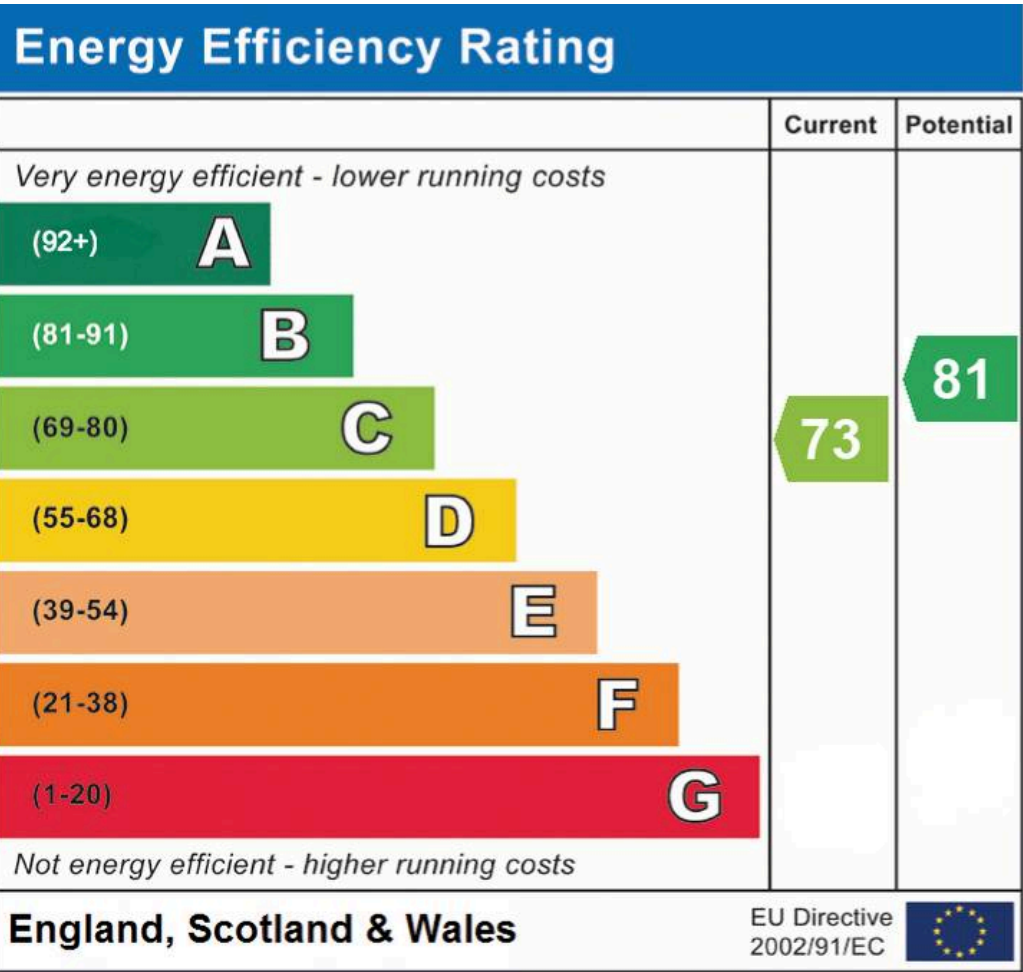
(1) Excluding balconies and terraces

Reduced headroom

Below 5 ft/1.5 m

Calculations reference the RICS IPMS 3C standard. Measurements are approximate and not to scale. This floor plan is intended for illustration only.

GIRAFFE360



Chinneck Shaw
 Bridge House, Milton Road, Portsmouth – PO3 6AN
 023 9282 6731
 hello@chinneckshaw.co.uk
 www.chinneckshaw.co.uk/

Chinneck Shaw, Bridge House, Milton Road, PO3 6AN Consumer Protection from Unfair Trading Regulations 2008: These details are for guidance only and complete accuracy cannot be guaranteed. If there is any point which is of particular importance, verification should be obtained. The do not constitute a contract or part of a contract. All measurements are approximate. No guarantee can be given with regard to planning permissions or fitness for purpose. No apparatus, equipment, fixture or fitting has been tested. Items shown in the photographs are NOT necessarily included. Interested Parties are advised to check availability and make an appointment to view before travelling to see a property.