



£350,000
Leasehold

52 Meadow Court, Hamilton Road
Sarisbury Green, Southampton, Hampshire SO31 7PU



Quick View



2 Bedrooms



None



1 Living Room



2 Bathrooms



Retirement Property



EPC Rating B



Permit Parking may be available



Council Tax Band D

Reasons to View

- A covered balcony will mean you can enjoy time outside whatever the weather!
- With neutral decor throughout and fitted flooring throughout this apartment is ready for you to move straight into.
- The Locks Heath Centre, and Park Gate shops are both just a 1/2 mile walk away and Holly Hill Leisure Centre is less than a mile too.
- Two bedrooms and two bathrooms gives you flexibility for when friends or family come to stay.
- The cream gloss fitted kitchen has fully integrated appliances for a sleek look.
- Specifically for the over 55's Meadow Court is a super friendly development where you can feel safe and secure.

Description

This lovely 'show apartment' is up on the top floor and has a covered balcony overlooking the central courtyard. If you like the fixtures and fittings you are welcome to keep things just as they are, making this the ultimate 'ready to move in' home.

As you enter Meadow Court there is a welcoming reception area with a residents' lounge and a cafe which is open until 3pm each day for breakfast and lunch or just a cuppa with friends. Other facilities include a hair salon, buggy store, treatment room and a guest room for hire. The corridors throughout give a real hotel feel and there are lifts to the upper floors.

Stepping into the apartment there is a spacious hallway with double doors that open up to reveal the utility area with fitted washing machine. There is also a huge walk in storage cupboard with light. The living room has plenty of space for a dining table as well as the lounge suite and is open plan to the fitted kitchen. The integrated appliances include; fan oven, combi-microwave, induction hob, fridge, freezer and slimline dishwasher.

The main bedroom has a built in double wardrobe and en-suite with step free, walk in shower. There is a further bedroom and bathroom for those who like a soak.

At Meadow Court there is a good social calendar so you can be as involved as you wish, or if you prefer your own company you can enjoy the lovely gardens. If you prefer to get out and about there is lots to explore in the nearby area such as the foreshore at Warsash, Holly Hill Woodland Park or just the shops at Locks Heath Centre. Pets are also welcome at Meadow Court if you want to bring your furry friend.

Other Information

This is a leasehold property for the over 55's only. The 125 year lease commenced 1 December 2018. The service charge is £502.20 per month from April 1st 2025. Upon sale there is an admin fee payable of £660 and a contribution of 3% of the sale price towards the sinking fund.

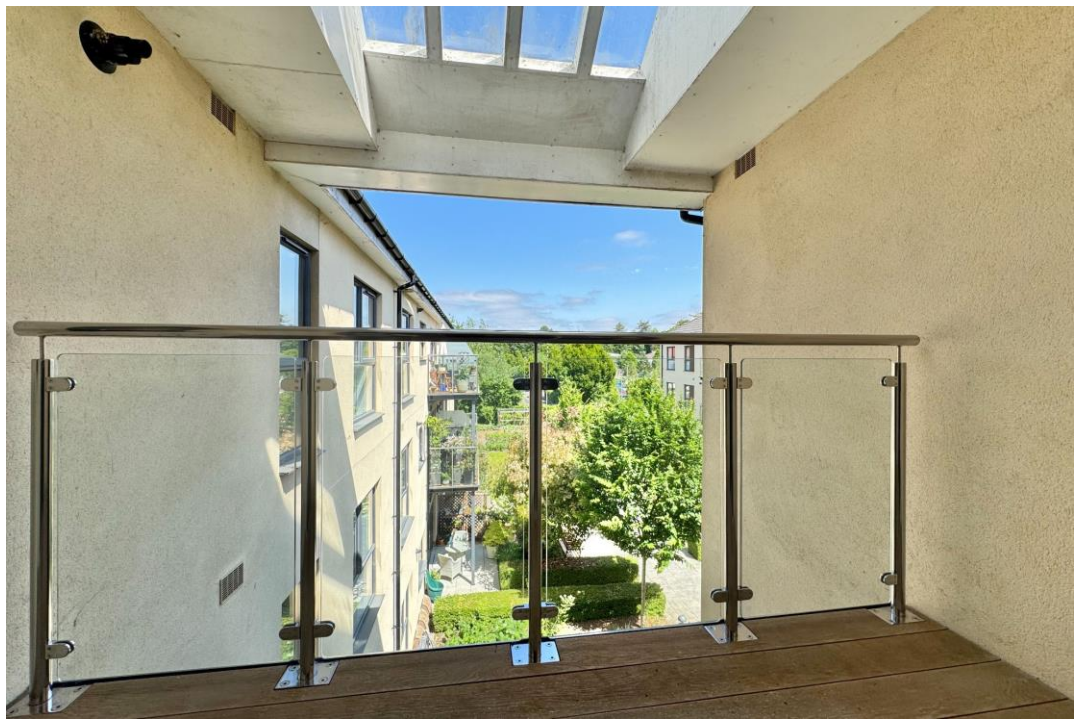
Directions

<https://what3words.com/modules.squeaks.fidgeting>



Total area: approx. 79.7 sq. metres (857.7 sq. feet)

Robinson Reade endeavour to supply accurate and reliable property information in line with Consumer Protection from Unfair Trading Regulations 2008, however please contact the office before viewing if there is any aspect which is particularly important to you and we will be pleased to provide the relevant information. These property details do not constitute any part of an offer or contract, all measurements are approximate. Any services, appliances and heating systems listed have not been checked. We must point out that where we introduce you to a third party who offers conveyancing, removal or financial services, e.g. legal, mortgage and insurance advice, we may earn a commission. For more information go to www.robinsonreade.co.uk/referral-fees. Robinson Reade Ltd, Registered office: 10 Middle Road, Park Gate, Southampton, SO31 7GH, Co Reg No: 5185152



Pop in to see us at 10 Middle Road, Park Gate, Southampton, Hampshire, SO31 7GH
Email us sales@robinsonreade.co.uk Visit us www.robinsonreade.co.uk
Call us on 01489 579009

Independent Sales & Letting Agents for the Strawberry Coast