

HOME  TRUTHS

Woodside, Euxton

PR7 6AL





Three bedroom mid terrace property in a popular residential location within easy reach of excellent schools, primary transport routes and village amenities. Available with no upward chain.

To the front the driveway leads to the entrance hallway and from there to the living room. To the rear the dining kitchen benefits from a range of wall and base units with breakfast bar, electric hob, oven & grill, dishwasher and space, power & plumbing for additional appliances.

Step outside into the private, low maintenance rear garden with ginnel access to the front and brick built storage.

Back inside, to the first floor bedroom one is to the front with bedroom two, also a double, to the rear with airing cupboard housing the Vaillant combi boiler. Bedroom three is a single with the modern bathroom comprising bath with screen and mixer shower over, wc, wash hand basin on vanity and ladder heated towel rail.

This would make an excellent first time buy or investment property where you could expect a return of around 6%. Do give us a call to arrange a viewing and make it yours. Council tax A, EPC C, Freehold.



Three bedroom mid terrace property in a popular residential location within easy reach of excellent schools, primary transport routes and village amenities. Available with no upward chain. Council Tax band: A

Tenure: Freehold

EPC Energy Efficiency Rating: C

EPC Environmental Impact Rating:

- Refurbished mid terrace property
- No upward chain
- Three bedrooms
- Off road parking
- Close to excellent schools
- Virtual tour



HOME  TRUTHS

Eccleston Branch

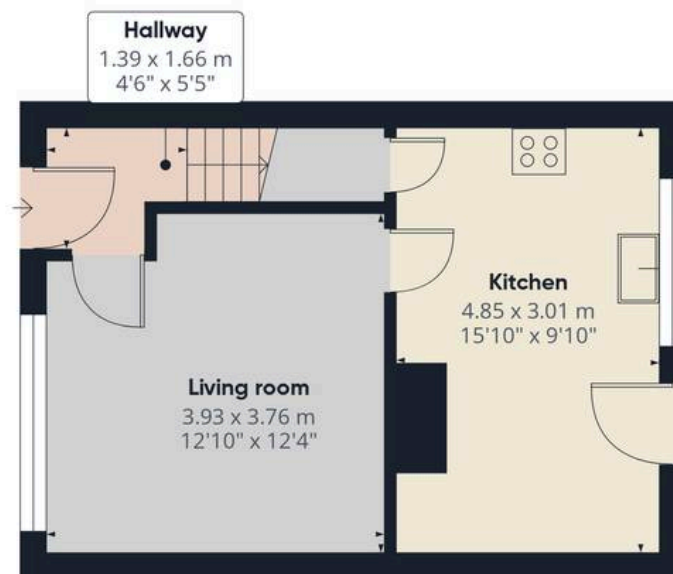
265 The Green, Eccleston, PR7 5TF
01257 451673

Coppull Branch

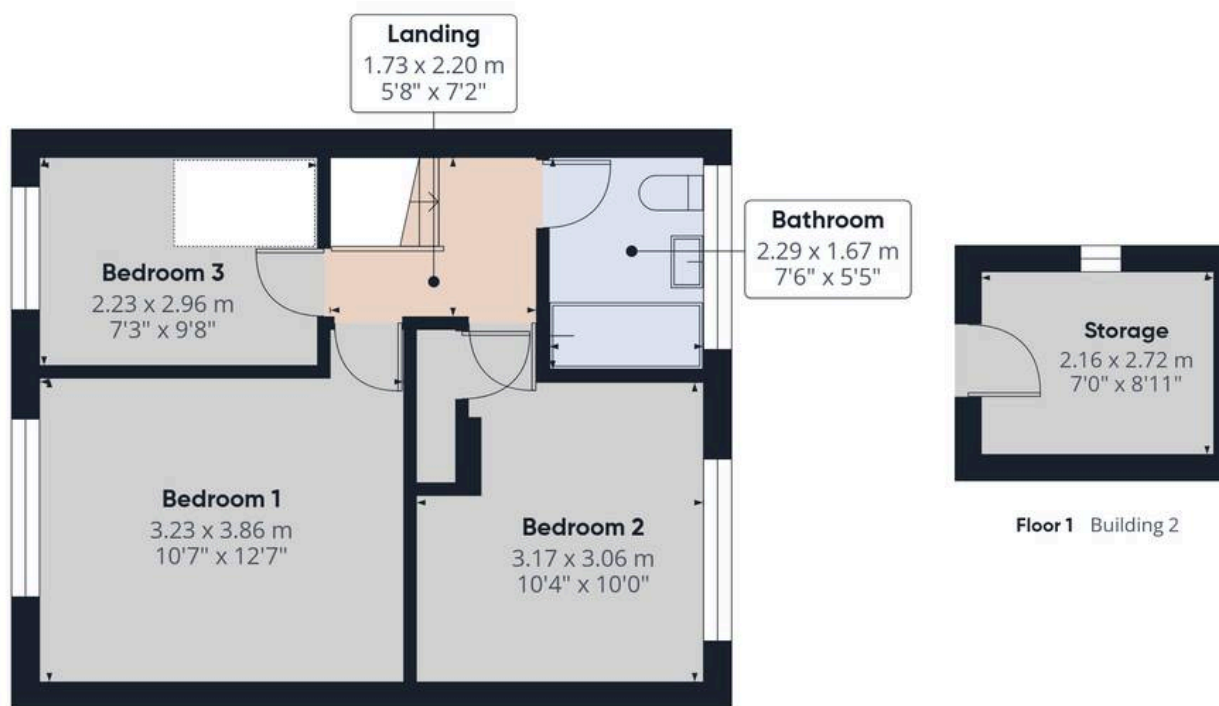
244 Spendmore Lane, Coppull, PR7 5DE
01257 794588

www.hometruthslancs.co.uk
office@hometruthslancs.co.uk





Floor 1 Building 1



Floor 1 Building 2

Floor 2 Building 1

Approximate total area⁽¹⁾

73.1 m²

787 ft²

(1) Excluding balconies and terraces

Calculations reference the RICS IPMS 3C standard. Measurements are approximate and not to scale. This floor plan is intended for illustration only.

GIRAFFE360