



Flat 35, Strand Court Strand Quay, Rye
£155,000



Flat 35

Strand Court Strand Quay, Rye

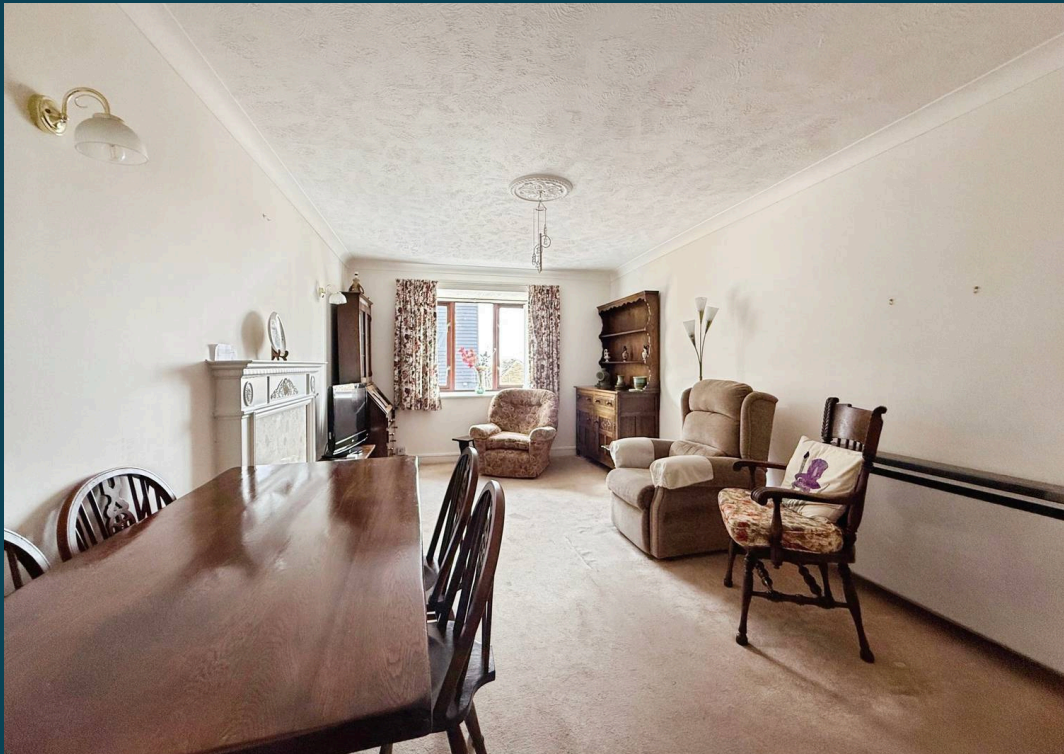
Council Tax band: C

Tenure: Leasehold

EPC Energy Efficiency Rating: B

EPC Environmental Impact Rating:

- Chain Free
- Second Floor Apartment
- Located Directly Opposite the Lift
- Rye Town Centre
- Suitable for Those Aged Over 60
- House Manager & Care Line System with Emergency Pull Cord
- Communal Living Room, Laundry Room, Garden & Courtyard
- Parking Available by Arrangement & Availability







Floor Plan

This floor plan is for illustrative purposes only. It is not drawn to scale. Any measurements, floor areas (including any total floor area), openings and orientations are approximate. No details are guaranteed, they cannot be relied upon for any purpose and do not form any part of any agreement. No liability is taken for any error, omission or misstatement. A party must rely upon its own inspection(s). Powered by www.Propertybox.io



Nested Rye

01797 903045 • barnaby.osborne@nested.com • nested.com/barnaby-osborne