

# The Hawthorn

## The Woodlands at Halsnead Garden Village



Four-bedroom home, sleeps seven

4 | 

2 | 

1 | 



Artist's impression

### Key features

- Three double bedrooms
- Downstairs W.C.
- En-suite to master bedroom
- Open plan kitchen and dining room
- Separate living room
- Driveway parking

Lickers Lane, Whiston, L35 3PW

A stunning collection of 158 beautifully designed new homes



**The Hawthorn**  
Available plots

**Shared ownership**

43, 44, 94, 95, 97,  
108, 109, 121, 122,  
171, 172, 173, 177,  
178, 224, 225

**Rent to Buy**

99, 101, 102, 174,  
175, 176

Disclaimer: This document is a guide to the above development. The illustrations do not bind or imply the layout and specification will be as indicated. Please request a full development specification from the team. Correct at time of printing (March 2025). End terraces will have additional windows in some circumstances. Please check the specific plot with an advisor.

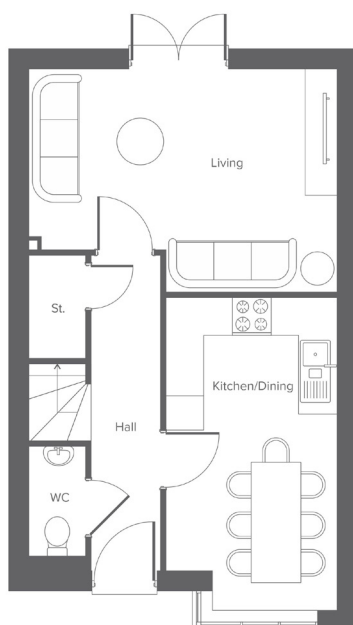
# The Hawthorn

## The Woodlands at Halsnead Garden Village

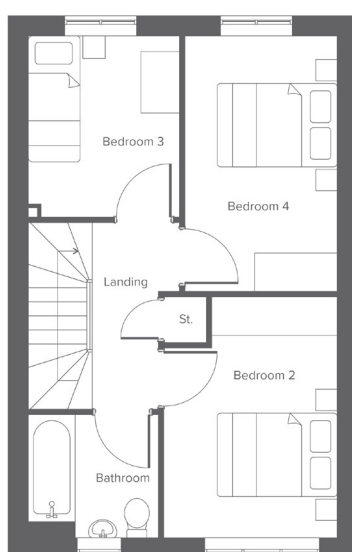


Four-bedroom home, sleeps seven

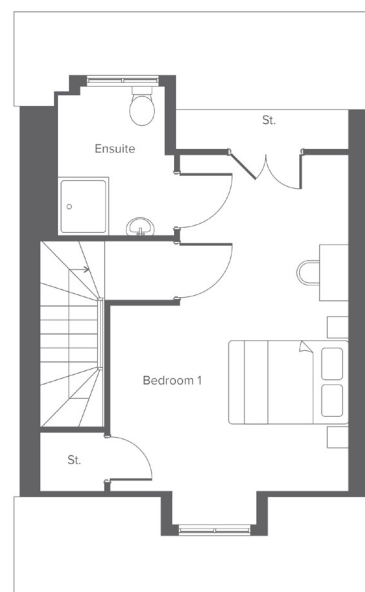
Ground floor



First floor



Second floor



Room	Metric	Imperial
Kitchen/Dining	2.73 x 5.00	8'11" x 16'4"
Living	4.92 x 3.56	16'1" x 11'8"
W.C.	0.93 x 1.99	3'0" x 6'6"

Room	Metric	Imperial
Bedroom 2	2.77 x 3.86	9'1" x 12'7"
Bedroom 3	2.41 x 2.89	7'10" x 9'5"
Bedroom 4	2.44 x 4.07	8'0" x 13'4"
Bathroom	2.07 x 1.98	6'9" x 6'5"

Room	Metric	Imperial
Bedroom 1	3.80 x 5.37	12'5" x 17'7"
En-suite	2.16 x 2.37	7'1" x 7'9"

Total size **111.89m<sup>2</sup> / 1,204.4 ft<sup>2</sup>**

### Get in touch



0151 808 1768



[yourhousinggroup.co.uk](https://yourhousinggroup.co.uk)



@yourhousing



[yourhousinggroup](https://yourhousinggroup)