

3 Leyburn Gardens, Croydon
£350,000 Share of Freehold



haboodle

Spacious Two-Bedroom Maisonette with Garage and Share of Freehold Near East Croydon Station

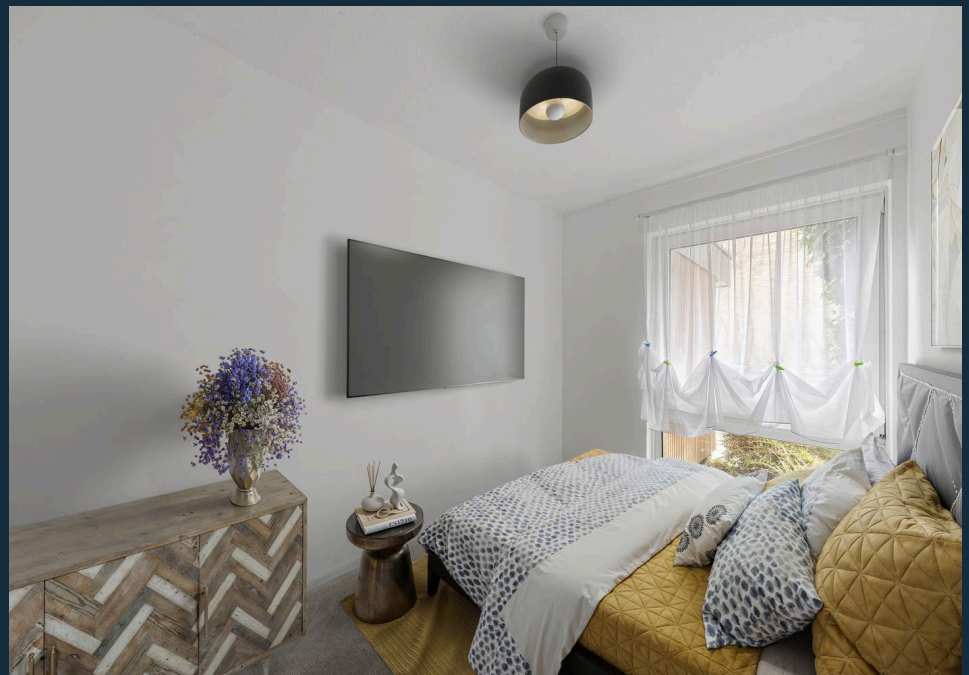
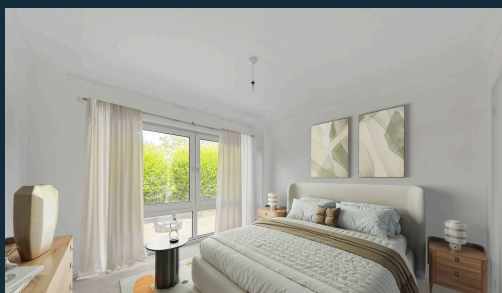
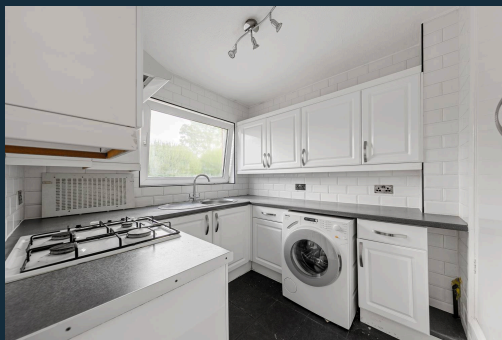
Set within a quiet residential cul-de-sac, just minutes from East Croydon Station, this well-presented two-bedroom maisonette offers generous proportions, excellent storage, and superb transport links. Ideal for first-time buyers, professionals, or anyone looking for a low-maintenance home in a connected location.

Accessed via its own private front door, the accommodation is situated entirely on one level. It features two well-proportioned double bedrooms, each with fitted wardrobes, a modern three-piece bathroom, a separate contemporary kitchen, and two spacious reception rooms, perfect for both relaxation and entertaining.

Additional highlights include a private garage underneath, a second allocated parking space, excellent internal storage, and a share of freehold



- › Two Double Bedrooms With Fitted Wardrobes
- › Spacious Living And Dining Rooms
- › Separate Modern Kitchen
- › Private Garage Underneath
- › Additional Allocated Parking Space
- › Own Front Door, All On One Level
- › Share Of Freehold
- › Excellent Storage Throughout
- › Quiet Residential Cul-De-Sac
- › Short Walk To East Croydon Station And Tram Stop



Leyburn Gardens Croydon, CR0

Approximate Gross Internal Area = 73.0 sq m / 786 sq ft

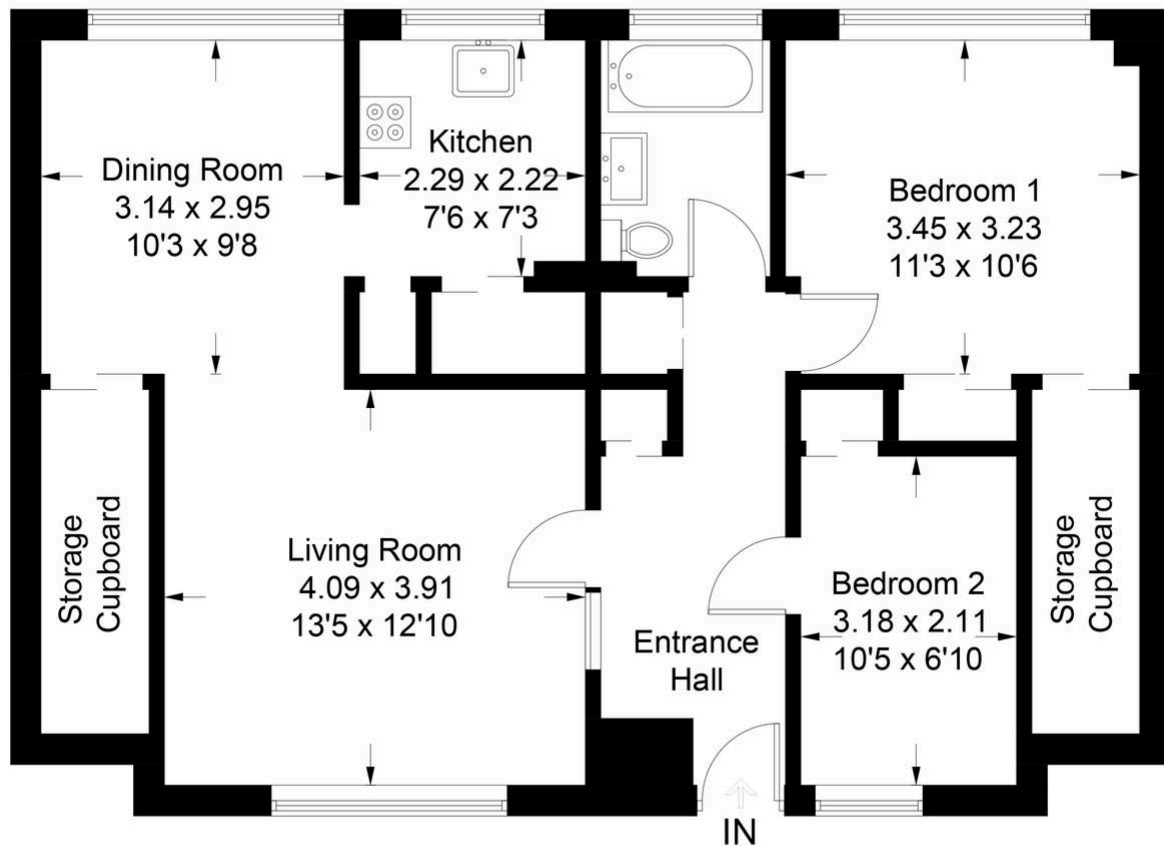


Illustration for identification purposes only, measurements are approximate, not to scale. Produced by Haboodle Estate Agents (ID1223968)



haboodle