



**20 Woodland Grove, Colwick – NG4 2GG**

Guide Price **£200,000**

**DavidJames**  
the estate agent





## 20 Woodland Grove

Colwick, Nottingham

Beautifully presented period 3-storey mid-terrace home close to local amenities and bus links! 2 reception rooms, 3 double beds, stylish shower room and gardens alongside parking with EV charging.

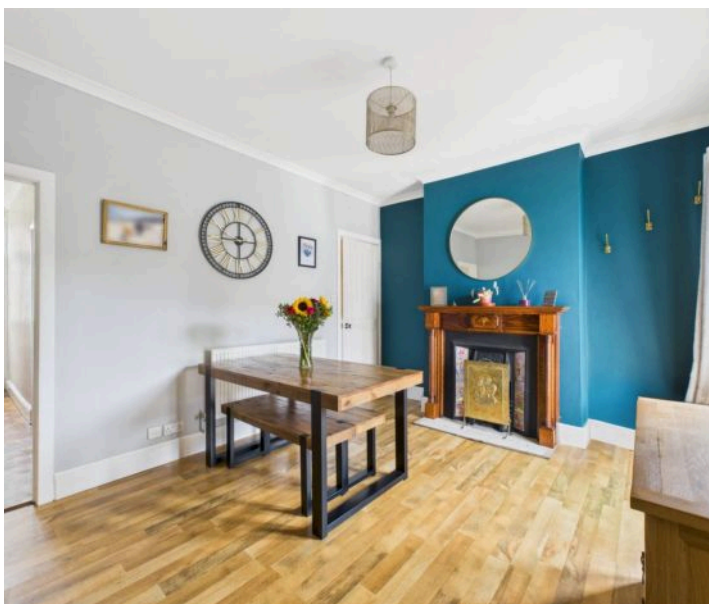
Council Tax band: A

Tenure: Freehold

EPC Energy Efficiency Rating: C

EPC Environmental Impact Rating:

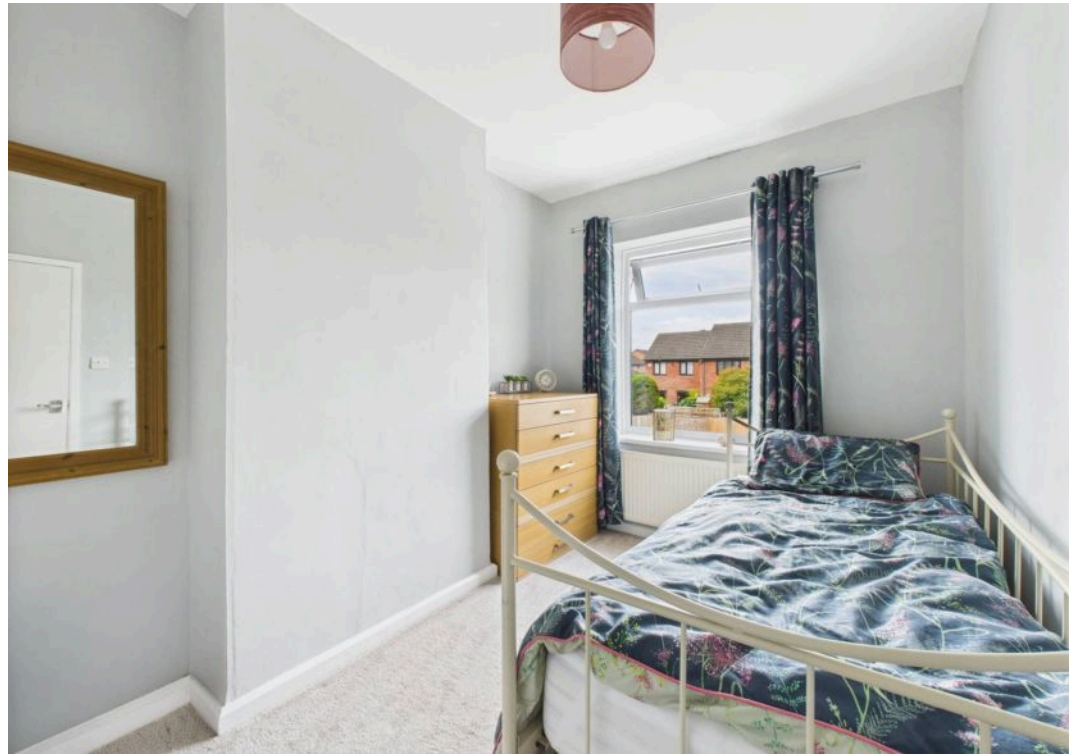
- Period three storey mid-terrace home
- Beautifully presented with a versatile layout that's perfect for families
- Excellent location close to local amenities, schools and Victoria Retail Park as well as bus and train links
- Bright and spacious lounge with feature fireplace surround and bay window
- Separate dining room with feature French doors
- Stylish kitchen with traditional units with feature Belfast sink and decorative tiled flooring
- Three double bedrooms (main bedroom with shaker style built-in wardrobes)
- Stunning modern three-piece shower room with double width walk-in shower and underfloor heating
- Good-sized front garden with lawn and gravelled seating area
- Low maintenance rear garden with patio seating area and off-street parking with EV charging













Floor 0



Floor 1



Floor 2

Approximate total area<sup>(1)</sup>

80.8 m<sup>2</sup>

869 ft<sup>2</sup>

(1) Excluding balconies and terraces

Reduced headroom

Below 1.5 m/5 ft

Calculations reference the RICS IPMS 3C standard. Measurements are approximate and not to scale. This floor plan is intended for illustration only.

GIRAFFE360





## David James Estate Agents

376 Carlton Hill, Carlton - NG4 1JA

0115 987 8957 • [carlton@david-james.com](mailto:carlton@david-james.com) • [www.david-james.com](http://www.david-james.com)

These particulars are produced in good faith and are set out as a general guide only. Measurements are approximate and floor plans are for illustrative purposes only. Services have not been tested. We have established professional relationships with third-party suppliers for the provision of services to Clients, details of which can be found on the property listing page on our website.