





Park Road

Kingston Upon Thames, Kingston Upon Thames

Set in the heart of North Kingston, this well presented 1930s ground floor maisonette offers charm, character, and comfort in equal measure. With two double bedrooms, a private entrance, and multiple private garden spaces, it's a rare find in a peaceful and highly sought-after location.

EPC Environmental Impact Rating: C

- WELL PRESENTED TWO DOUBLE BEDROOM 1930s GROUND FLOOR PURPOSE BUILT MAISONETTE with MULTIPLE PRIVATE GARDENS
- LONG LEASE OVER 900 YEARS and low outgoings.
- SUNNY WESTERLY FACING REAR GARDEN PERFECT FOR SOME EVENING SUNSHINE
- DOUBLE GLAZED WINDOWS INSTALLED THROUGHOUT
- SMART PATIO DOORS LEADING STRAIGHT OUT TO THE REAR PRIVATE GARDEN



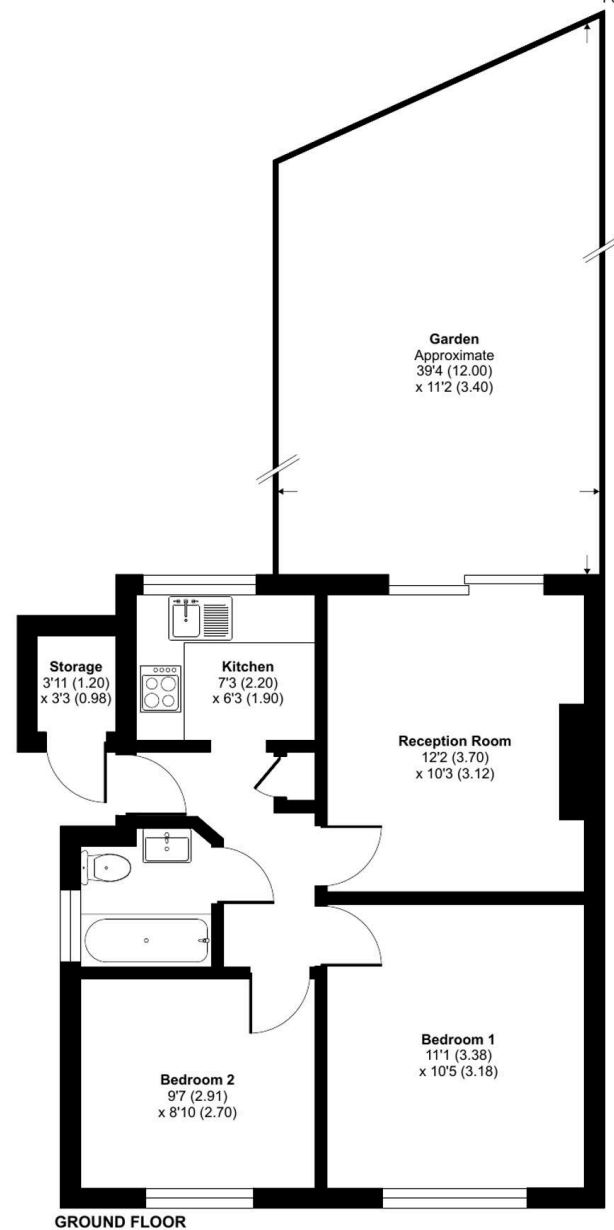
Park Road, Kingston Upon Thames, KT2

Approximate Area = 521 sq ft / 48.4 sq m

Outbuilding = 13 sq ft / 1.2 sq m

Total = 534 sq ft / 49.6 sq m

For identification only - Not to scale



Floor plan produced in accordance with RICS Property Measurement 2nd Edition, Incorporating International Property Measurement Standards (IPMS2 Residential). © nchecon 2025. Produced for Acres And West LTD (Mervyn Smith Estate Agents). REF: 1328175