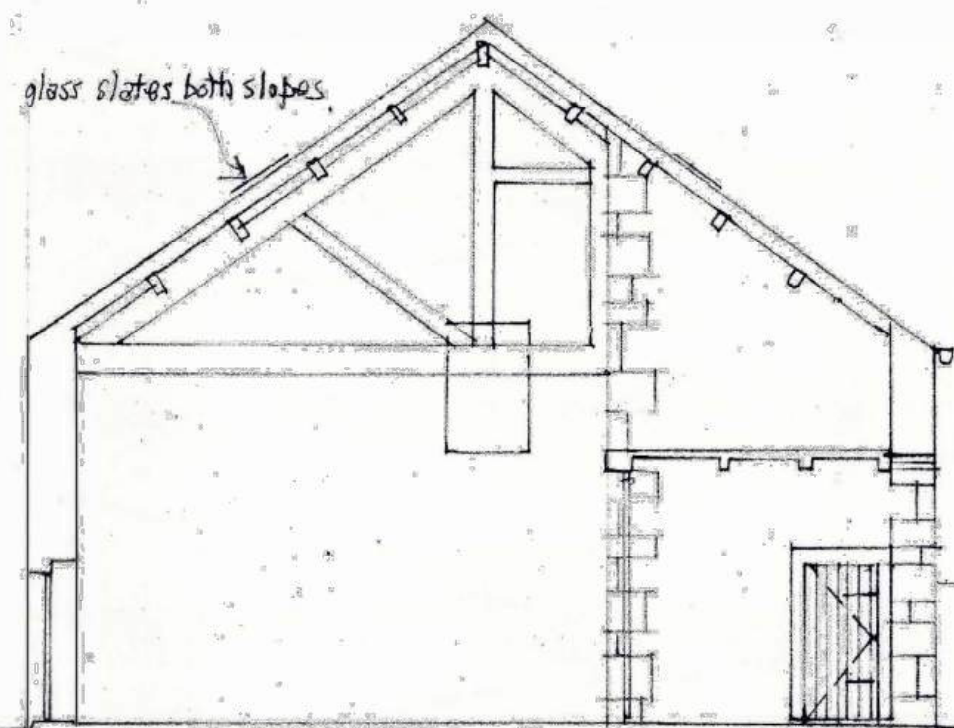
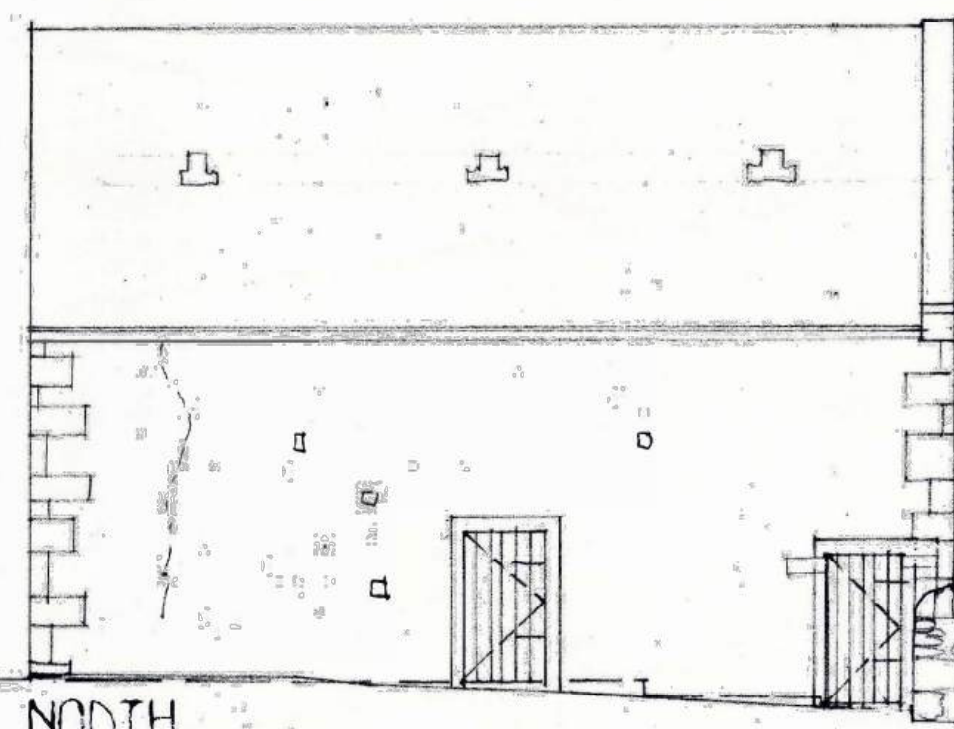


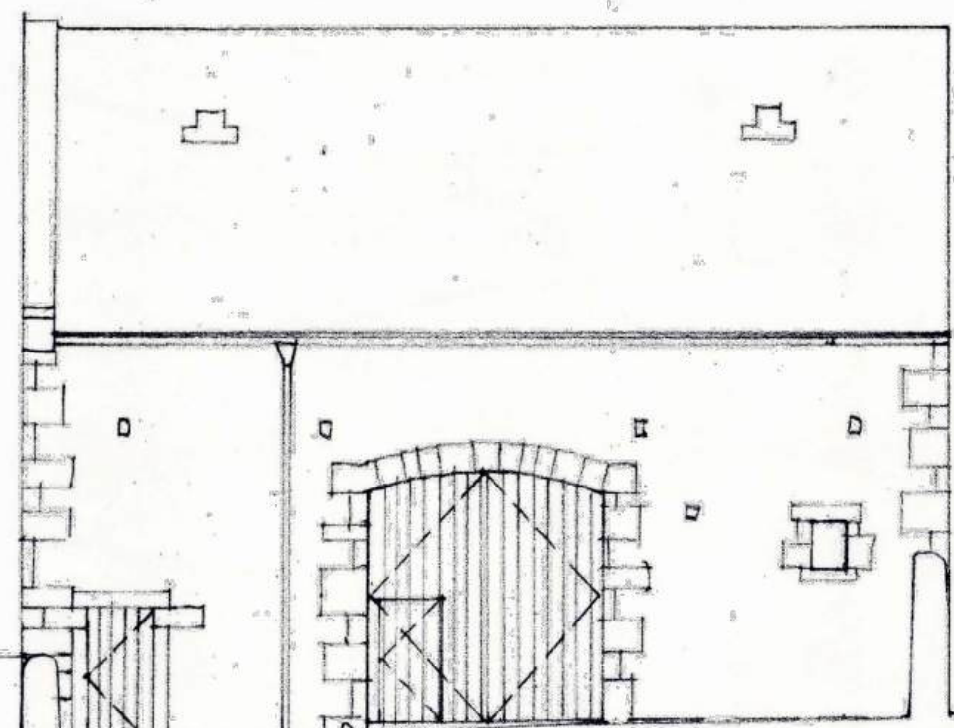
EXISTING



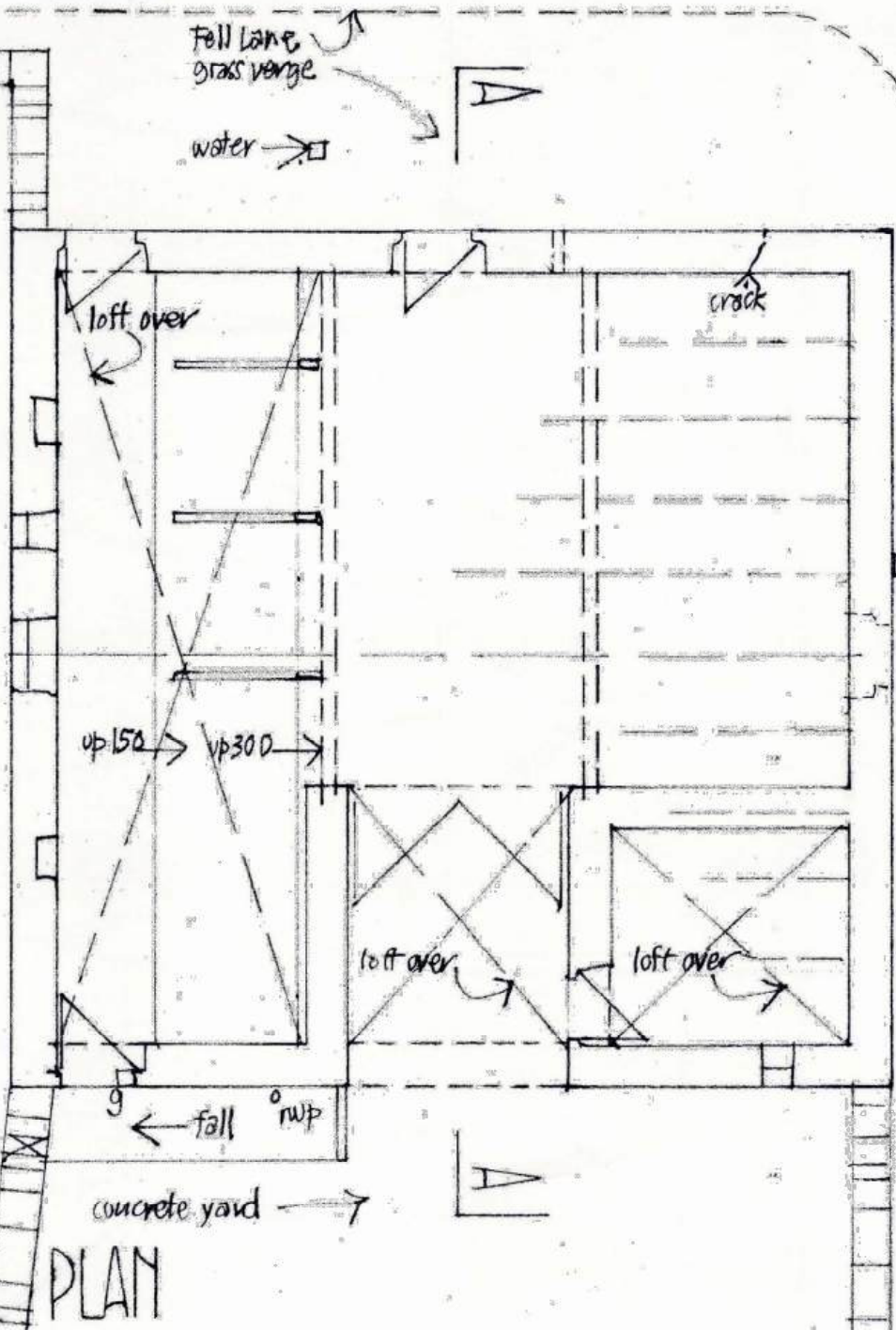
AA



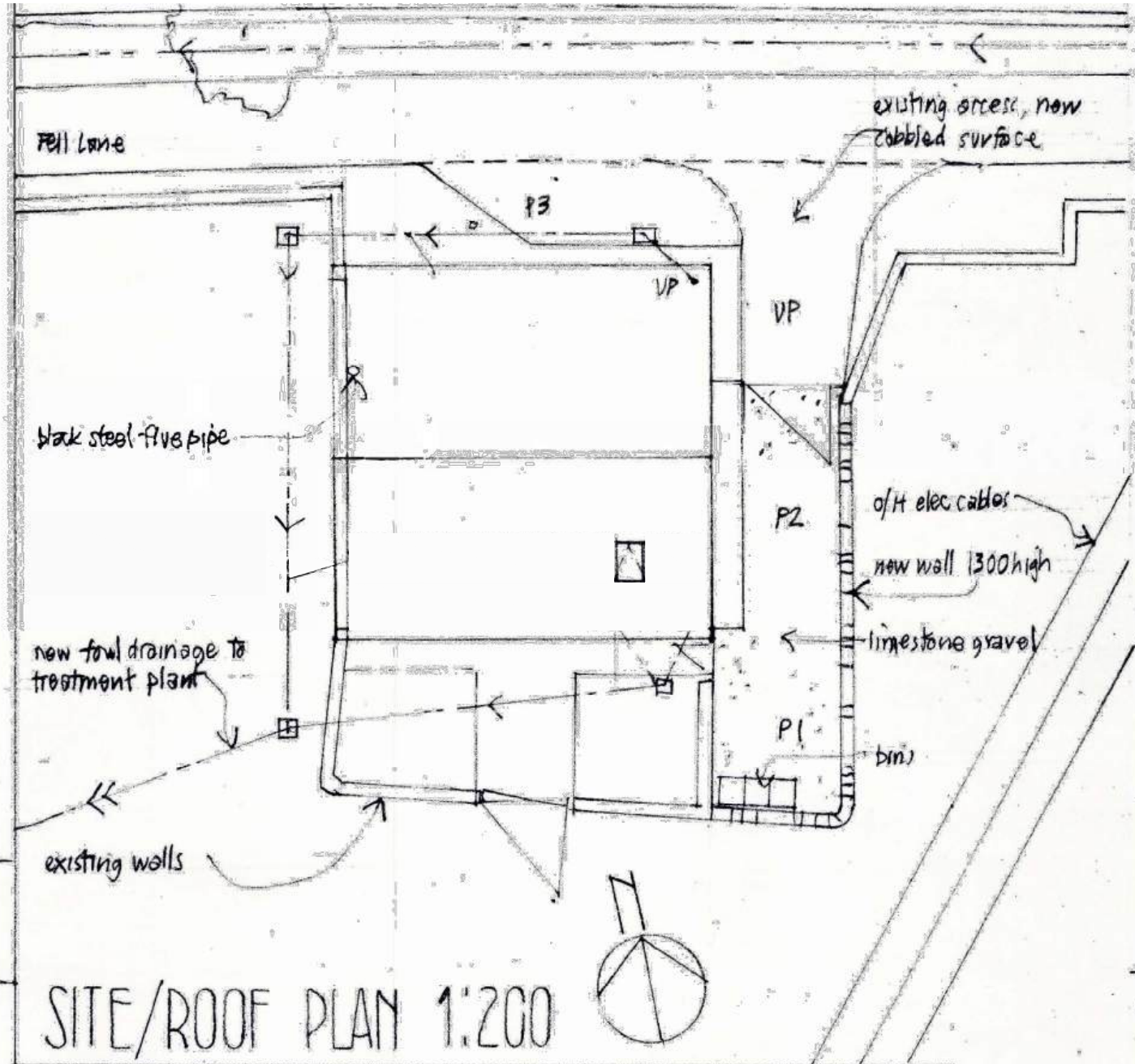
NORTH



SOUTH



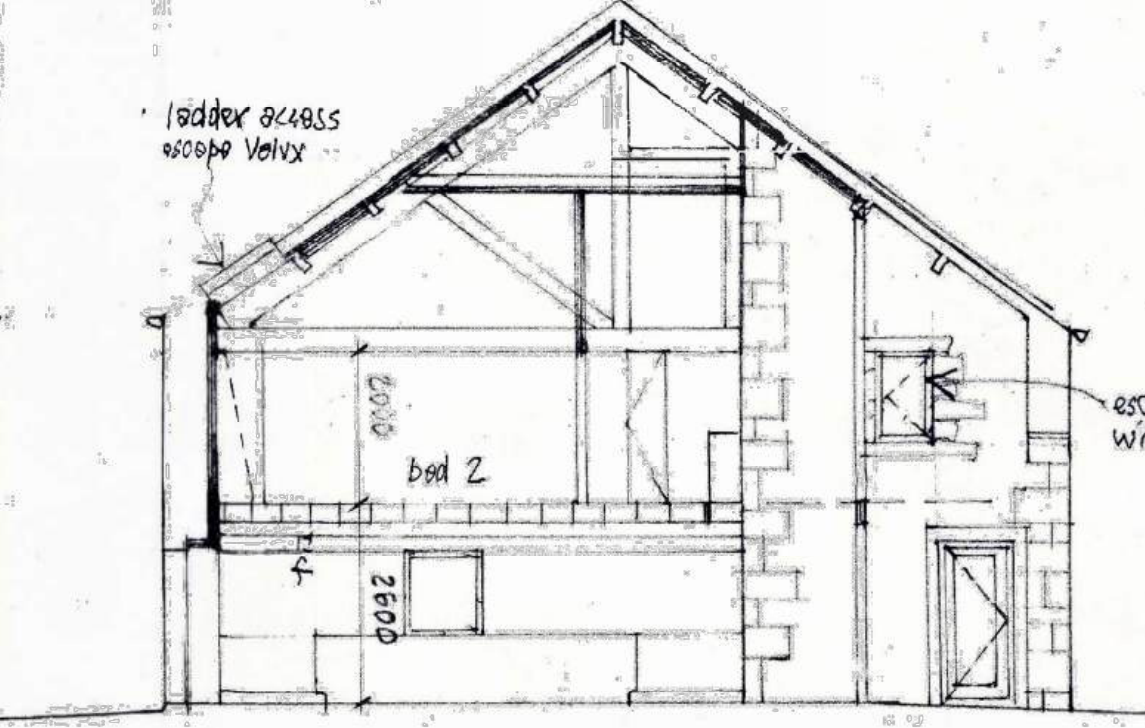
PLAN



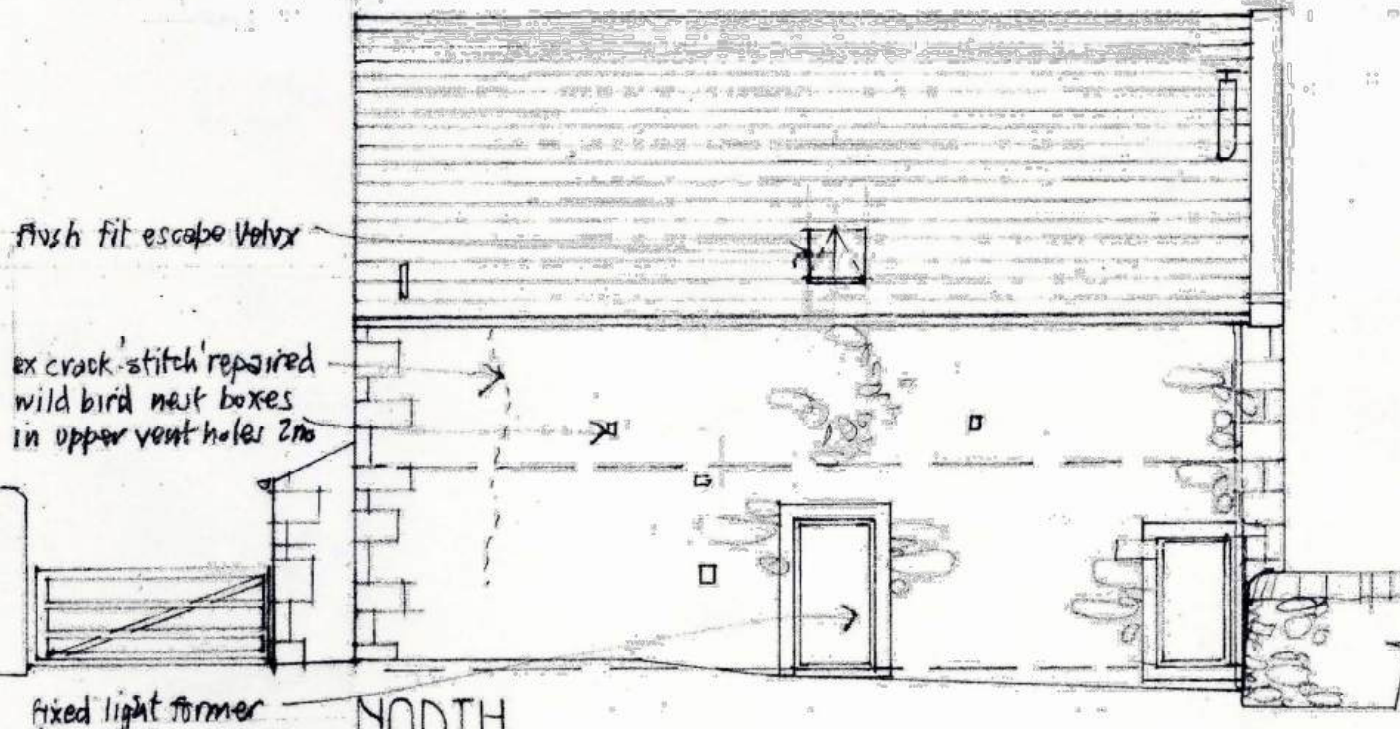
SITE/ROOF PLAN 1:200

PROPOSED

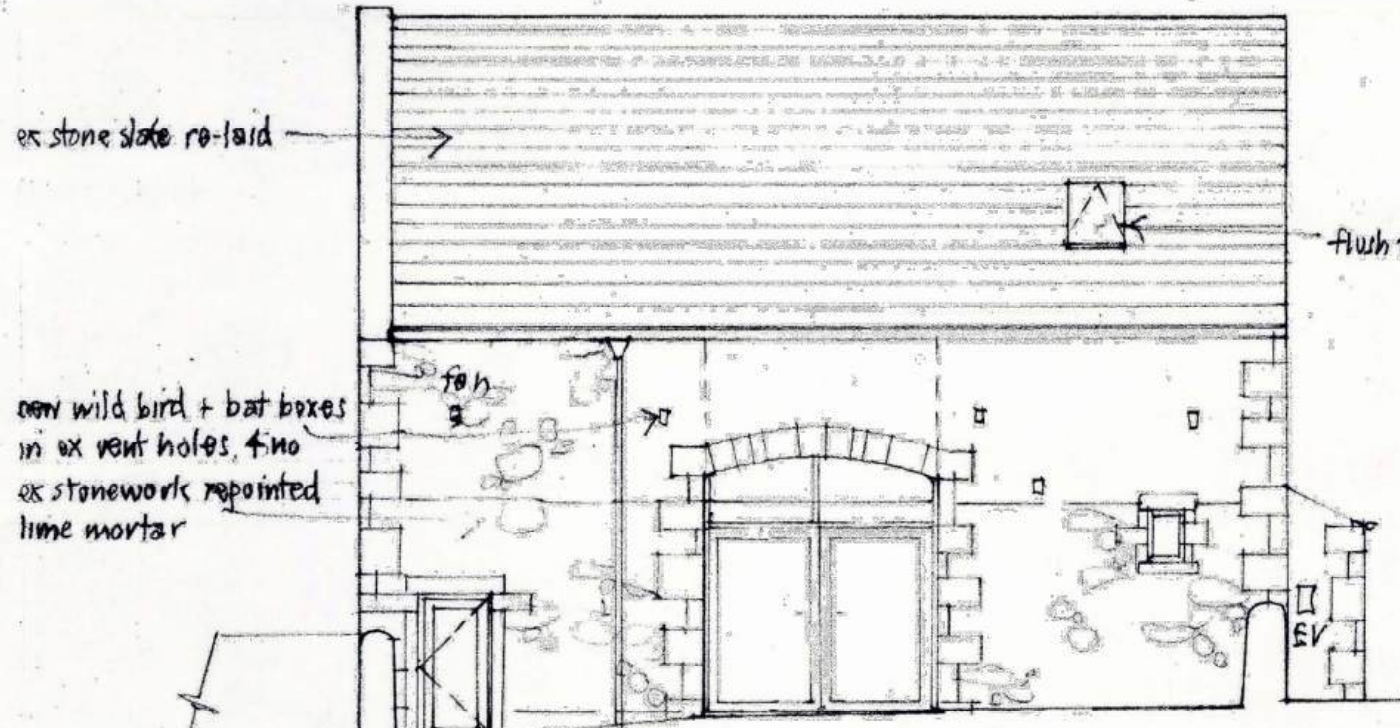
exterior materials:
roof - existing stone slate re-laid, flush fit conservation Velux, black PV panels
walls - existing stone repointed, lime mortar, brushed-off finish
windows + doors - painted timber, Heritage colour, all frames inset min 150mm reveal
r/g goods - black ogee alum boughing on brackets



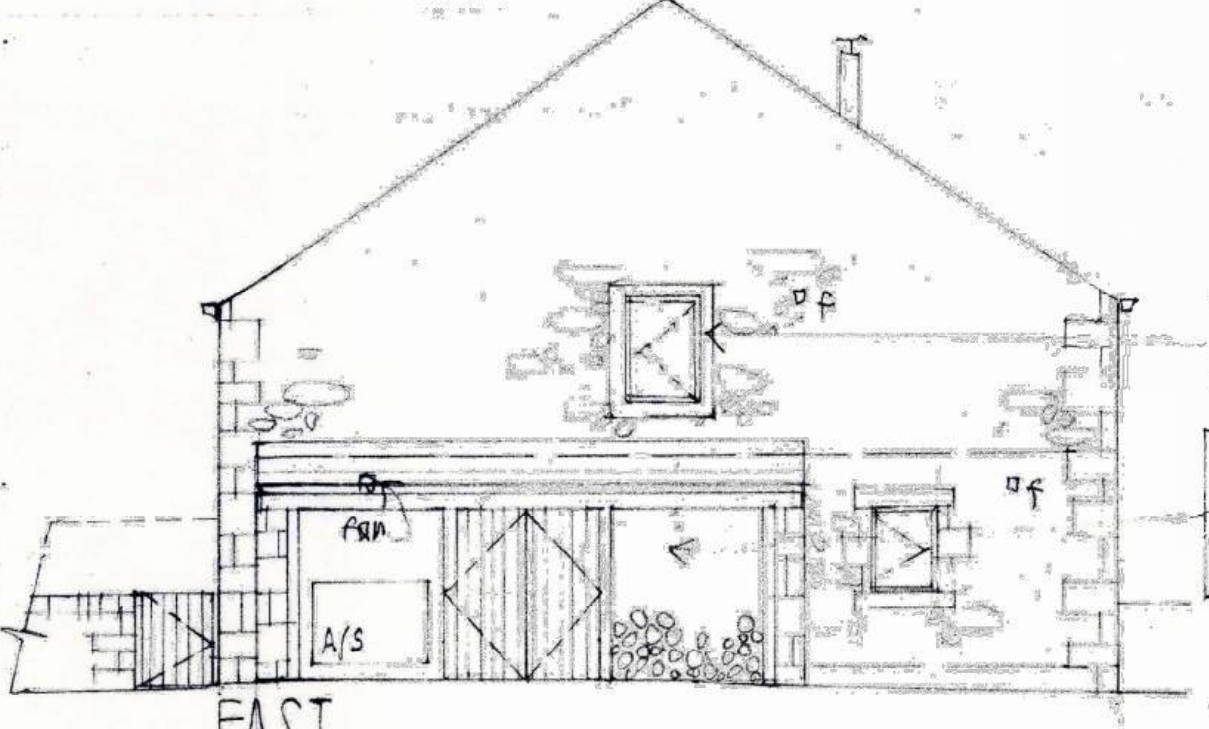
BB



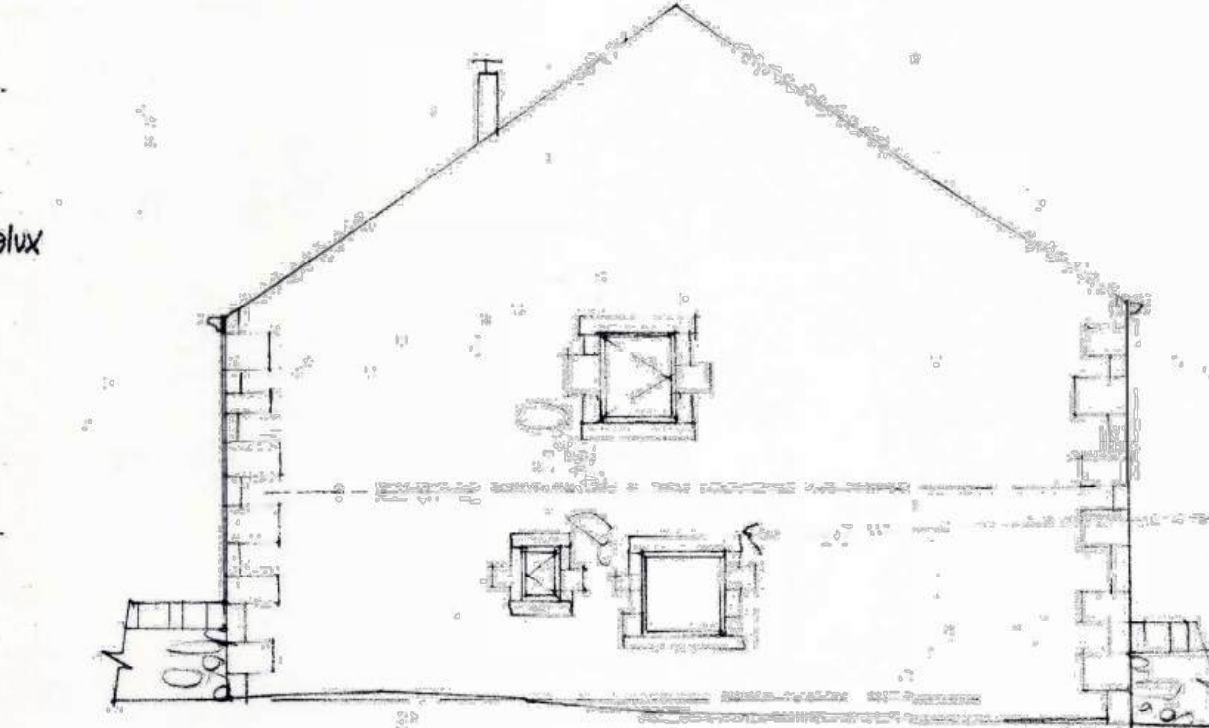
NORTH



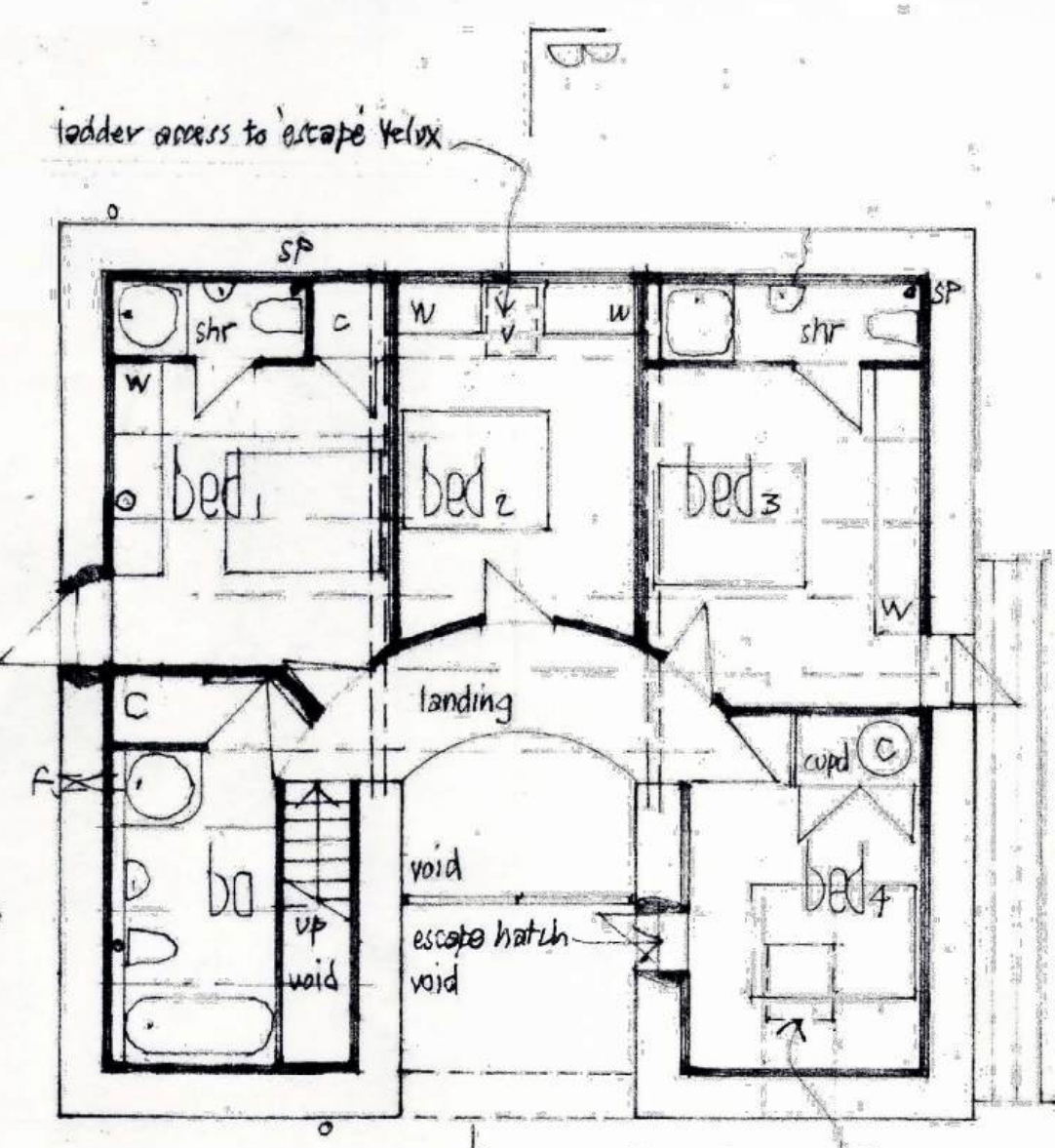
SOUTH



EAST

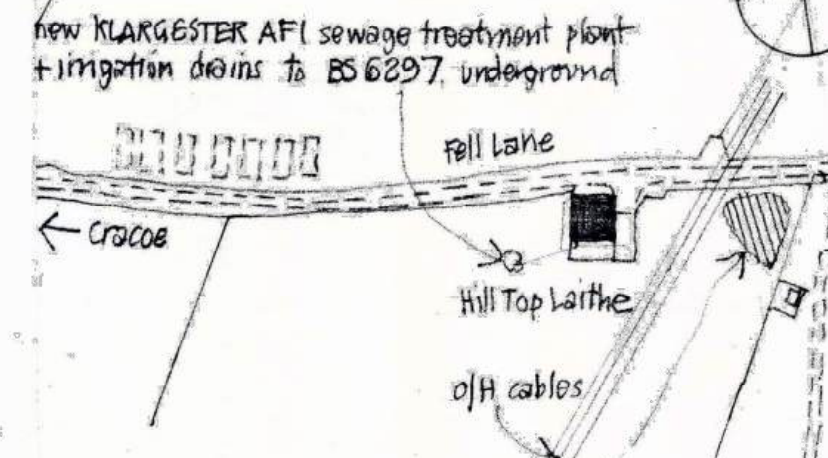


WEST



FIRST

LOCATION 1:1250



new tree planting group
310m standards, feathered, stake + tie to each tree
planted in prepared pit, rabbit guards fitted, in mixed gr
7 no hawthorn - crataegus monogyna
7 no alder - alnus glutinosa
7 no oak - quercus robur
21 no total @ approx 4.0m centres

rev A' 26-10-24
YDNP restrictions on new windows/rooflights
all elevs + plans revised accordingly
rev B' 15-1-25
PV panels removed

CONVERSION
HILL TOP LAITHE CRACOE
scale 1:100 February 2024

JW
JOHN & JENNIFER WHARTON ARCHITECT DESIGNER
Craven House
Brook View
Carlton
SKIPTON
North Yorkshire BD23 3EX Tel 01756 792708

3121^B