



Tideway Court, 238 Rotherhithe Street
London

In Excess of £400,000

OLIVER *O* JAQUES
EST. 1986

Tideway Court, London

Situated within a secure development, this two bedroom flat offers an abundance of light throughout.

The apartment is surrounded by peaceful spaces, from riverside walks close by to Southwark Park and The Ecological Park all being within walking distance. There are also plenty of social attractions in the immediate surround, The Salt Quay, The Mayflower, the Hilton Cocktail Bar and the Blacksmiths Arms as well as an abundance of shops, cafés, restaurants close by.

Council Tax band: D

Tenure: Leasehold

Lease end date: 25/09/2117

Service Charge: £3,945.50 PA

Ground Rent: £100 PA

EPC Energy Efficiency Rating: C

EPC Environmental Impact Rating: D

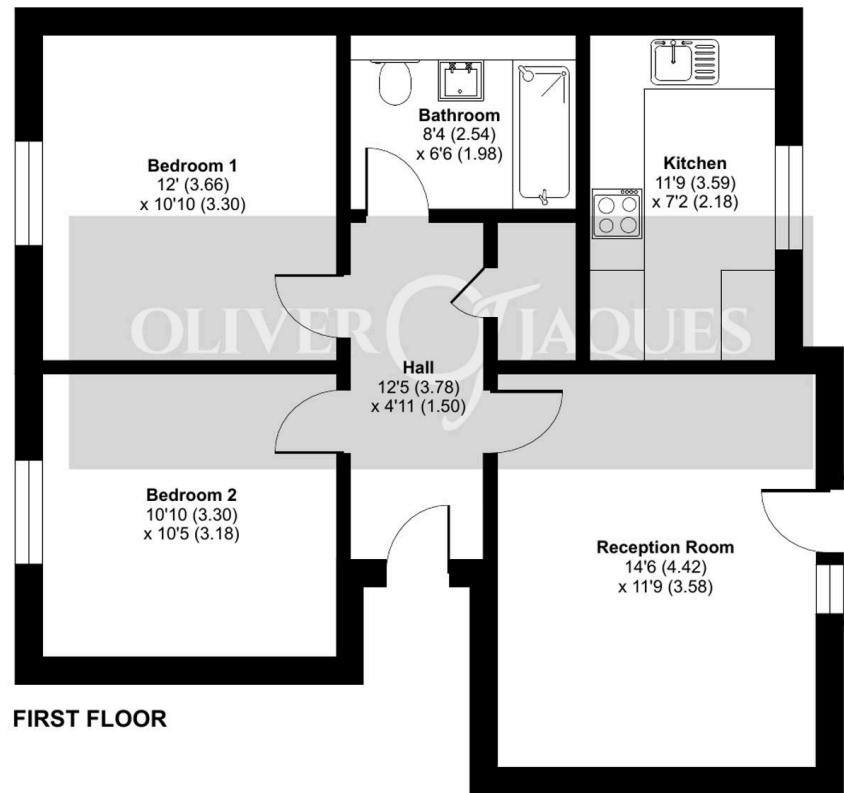
- First Floor
- Secure Entry System
- Secure Gated Parking
- Two Double Bedrooms



Rotherhithe Street, London, SE16

Approximate Area = 656 sq ft / 61 sq m

For identification only - Not to scale



FIRST FLOOR





Oliver Jaques

Oliver Jaques, 229-231 Lower Road – SE16 2LW

02072315050 • southeast@o-j.co.uk • o-j.co.uk/

Every care has been taken with the preparation of this brochure but it is for general guidance and complete accuracy can't be guaranteed. Prospective purchasers should seek clarification from their solicitor. The mention of any appliances fixtures or fittings does not imply they are in working order.