



32 Ethelburga Drive, Lyminge - CT18 8JJ

Guide Price **£335,000**

Approximate Gross Internal Area = 68 sq m / 737 sq ft
Garage = 12 sq m / 134 sq ft

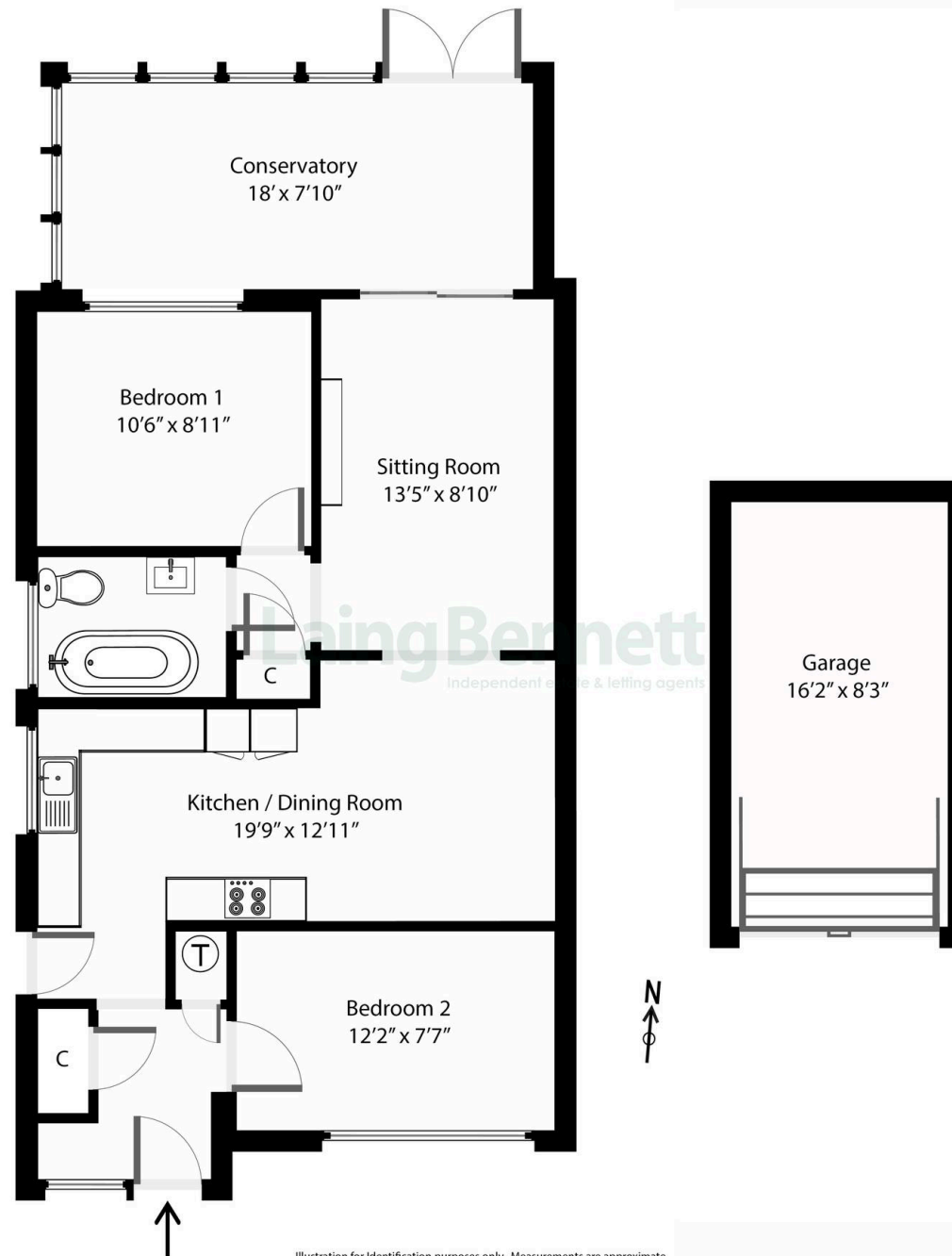


Illustration for identification purposes only. Measurements are approximate.
Not to scale. Outbuildings are not shown in actual location.



32 Ethelburga Drive

Lyminge, Folkestone

Charming Bungalow in Lyminge, Kent – Area of Outstanding Natural Beauty. This two bedroom semi detached bungalow has been updated to the highest of standards and now boasts exceptional accommodation that is comparable to a show home. The property is in a lovely setting and overlooks the pretty green.

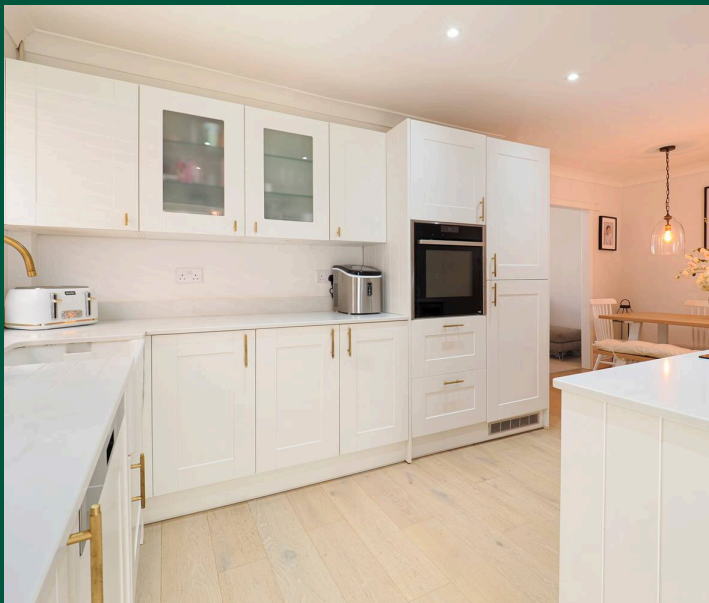
Accommodation comprises: Entrance hall, stylish and sleek kitchen being open plan to the dining room which has wide walk through opening to the living room with a feature fireplace and sliding double glazed patio doors to the conservatory. Inner recess with storage cupboard and door to the beautiful and contemporary bathroom/WC. Bedroom one, bedroom two overlooking front aspect. Outside: To the front of the property there are easy steps to the front door and paving for ease of maintenance. The rear garden is of generous proportions with sun terrace and steps to the lawn with well stocked border beds. Garage en bloc.

Council Tax band: C

Tenure: Freehold

EPC Energy Efficiency Rating: C

EPC Environmental Impact Rating: D



Laing Bennett

Laing Bennett Ltd, The Estate Office, 8 Station Road – CT18 8HP

01303 863393

info@laingbennett.co.uk

www.laingbennett.co.uk/

DISCLAIMER – These details are for guidance only and do not form part of an offer or contract. Measurements are approximate. Laing Bennett Ltd and the Vendor/Landlord accept no liability. Services and appliances are untested. Applicants must make their own checks. Items shown may not be included. No staff have authority to give warranties.