



5 Brierley Green, Netherfield – NG4 2PP

Guide Price £30,000

DavidJames
the estate agent



5 Brierley Green

Netherfield, Nottingham

GUIDE PRICE £30,000 – £35,000 One bed retirement bungalow for the over 55s offered with no chain and with 25% ownership – close to amenities! Featuring a good-sized lounge, shower room & conservatory.

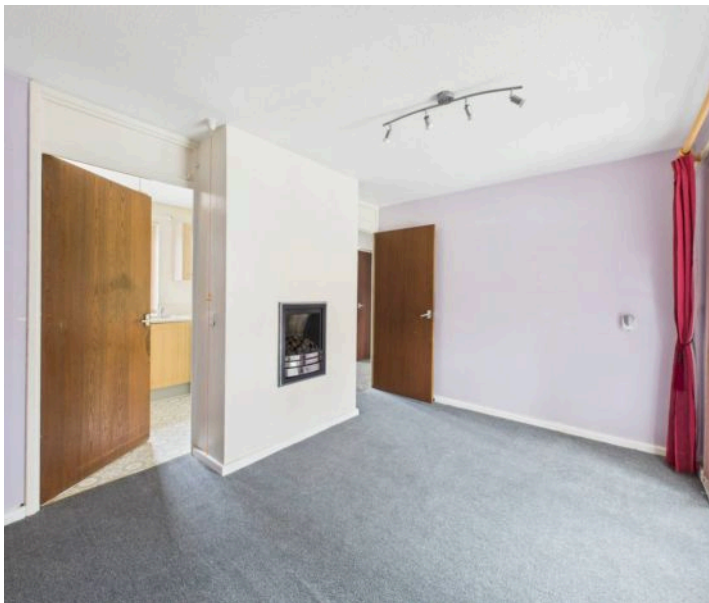
Council Tax band: A

Tenure: Leasehold

EPC Energy Efficiency Rating: C

EPC Environmental Impact Rating:

- Retirement bungalow on a popular over 55's retirement complex, located on a quiet public footpath
- Offered to the market with no upward chain with 25% ownership (rent payable on remaining 75%)
- Great location within walking distance of Netherfield's amenities and transport links
- Entrance hallway with two useful storage cupboards (one housing the gas combination boiler)
- Lounge with feature gas fire and patio doors into the conservatory
- Light wood-effect kitchen units with integrated cooker hood and space for freestanding appliances
- Lean-to conservatory with views over the gardens making it the perfect place to relax in
- Good-sized double bedroom with lovely views
- Shower room with three-piece suite, double width walk-in enclosure and electric shower
- Allocated garden space in the communal gardens and off-street parking space in the communal parking bays



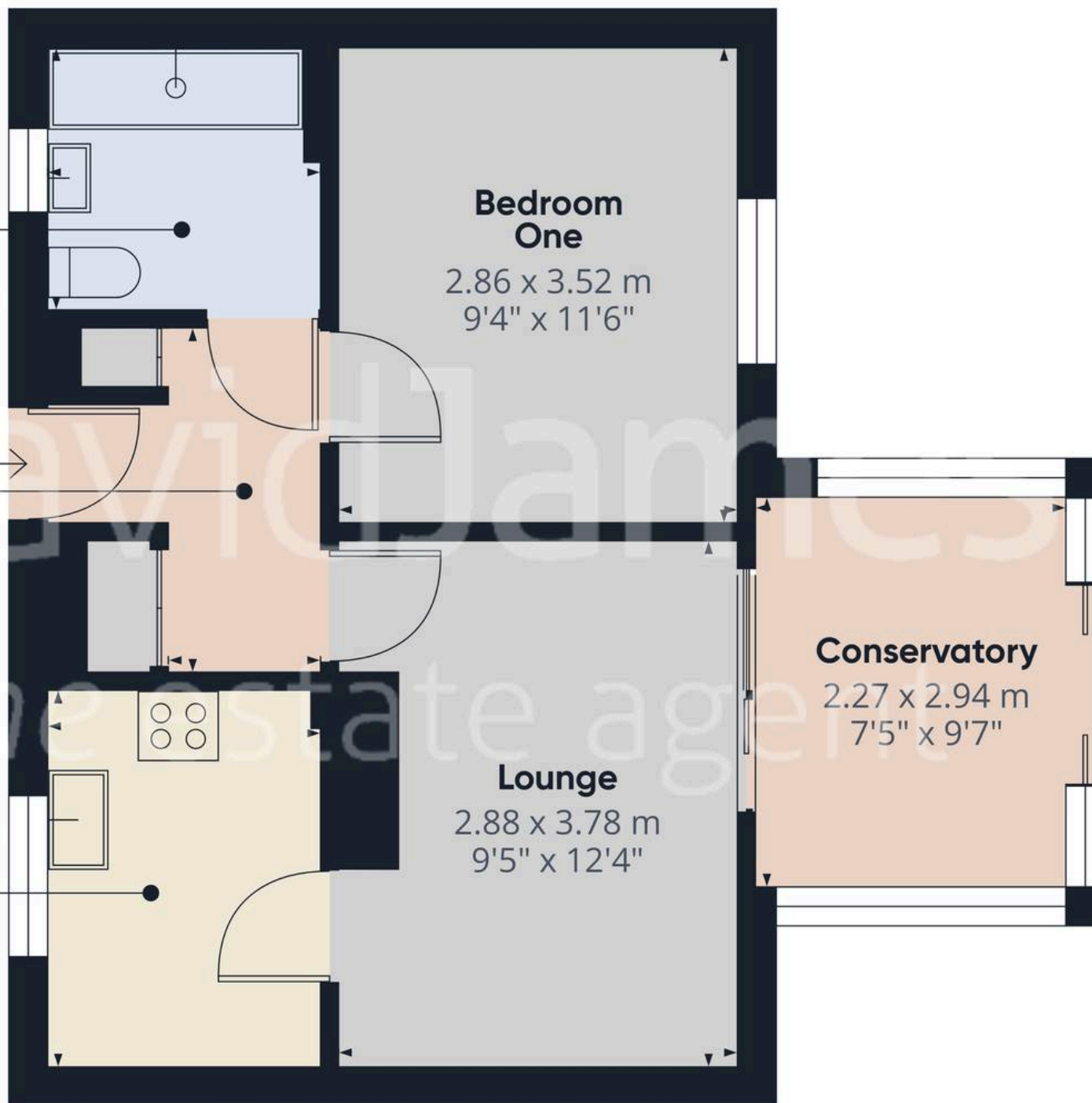




Shower Room
1.99 x 1.98 m
6'6" x 6'5"

Entrance Hallway
1.18 x 2.52 m
3'10" x 8'3"

Kitchen
2.01 x 2.75 m
6'7" x 9'0"



Approximate total area⁽¹⁾
41.1 m²
442 ft²

(1) Excluding balconies and terraces

Calculations reference the RICS IPMS 3C standard. Measurements are approximate and not to scale. This floor plan is intended for illustration only.

GIRAFFE360



David James Estate Agents

376 Carlton Hill, Carlton - NG4 1JA

0115 987 8957 • carlton@david-james.com • www.david-james.com

These particulars are produced in good faith and are set out as a general guide only. Measurements are approximate and floor plans are for illustrative purposes only. Services have not been tested. We have established professional relationships with third-party suppliers for the provision of services to Clients, details of which can be found on the property listing page on our website.