



Cholmondeley Road, Salford

Salford



£320,000



# 54 Cholmondeley Road

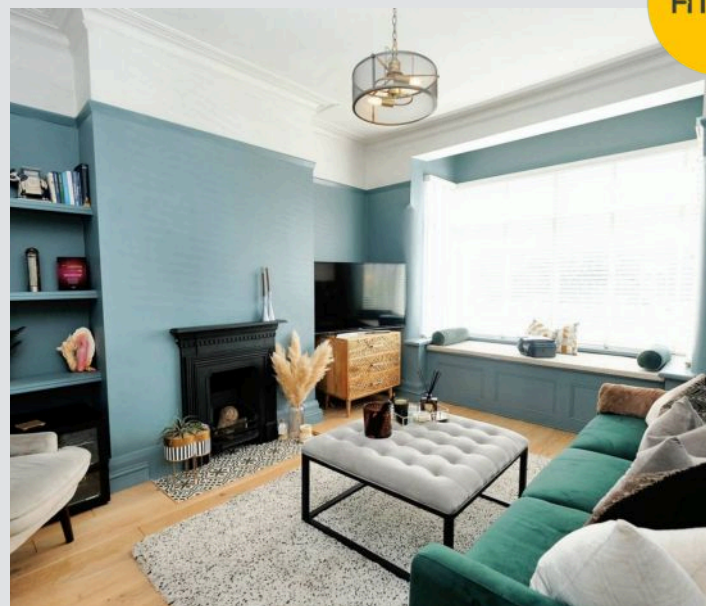
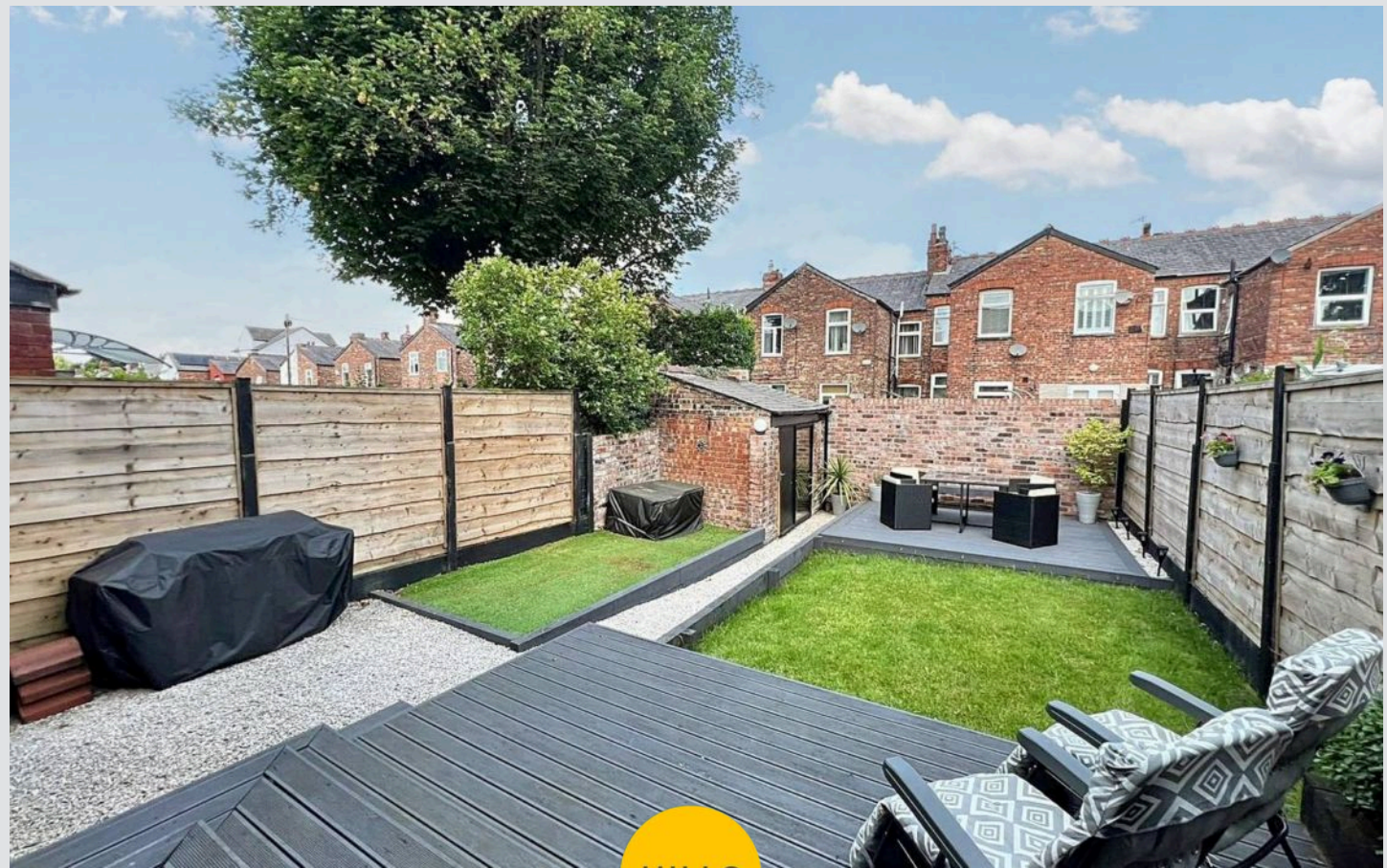
Salford, Salford

**\*\*Beautifully Presented, Three Bedroom Semi-Detached Period Property Located on a Popular Road, Within Walking Distance of Salford Royal Hospital! Boasting a Generous, Landscaped Garden to the Rear!\*\***

Council Tax band: C

Tenure: Freehold

- Beautifully Presented Three Bedroom, Semi-Detached Period Property
- Located on a Popular Road, Within Walking Distance of Salford Royal Hospital
- Large Bay-Fronted Lounge
- Contemporary Kitchen Diner with Bi-Folding Doors to the Rear
- Three Spacious Bedrooms
- Modern, Three-Piece Family Bathroom
- Generously-Sized Landscaped Garden to the Rear
- Benefits from an Outside Bar
- Within Walking Distance of Light Oaks Primary School and Several Well-Kept Parks
- Close to Excellent Transport Links into Salford Quays, Media City and Manchester City Centre





### Entrance Hallway

### Lounge

15' 3" x 11' 7" (4.65m x 3.52m)

### Kitchen Diner

### Landing

### Bedroom One

15' 2" x 11' 6" (4.62m x 3.51m)

### Bedroom Two

12' 2" x 10' 2" (3.70m x 3.11m)

### Bedroom Three

8' 11" x 7' 10" (2.71m x 2.39m)

### Bathroom

9' 7" x 7' 10" (2.92m x 2.40m)



HILLS



## Entrance Hallway

## Lounge

15' 3" x 11' 7" (4.65m x 3.52m)

## Kitchen Diner

## Landing

## Bedroom One

15' 2" x 11' 6" (4.62m x 3.51m)

## Bedroom Two

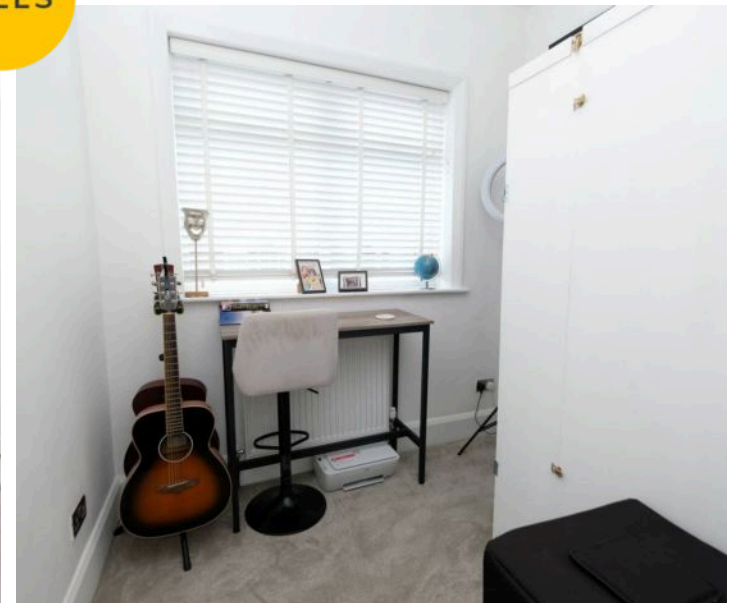
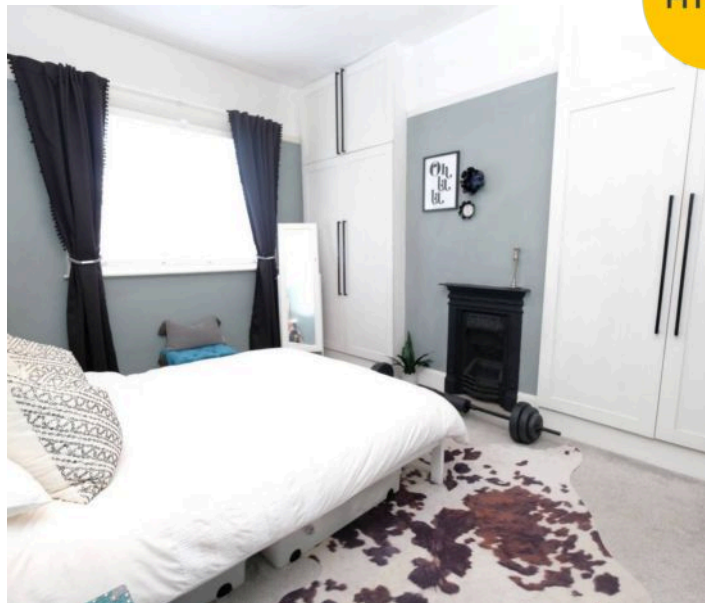
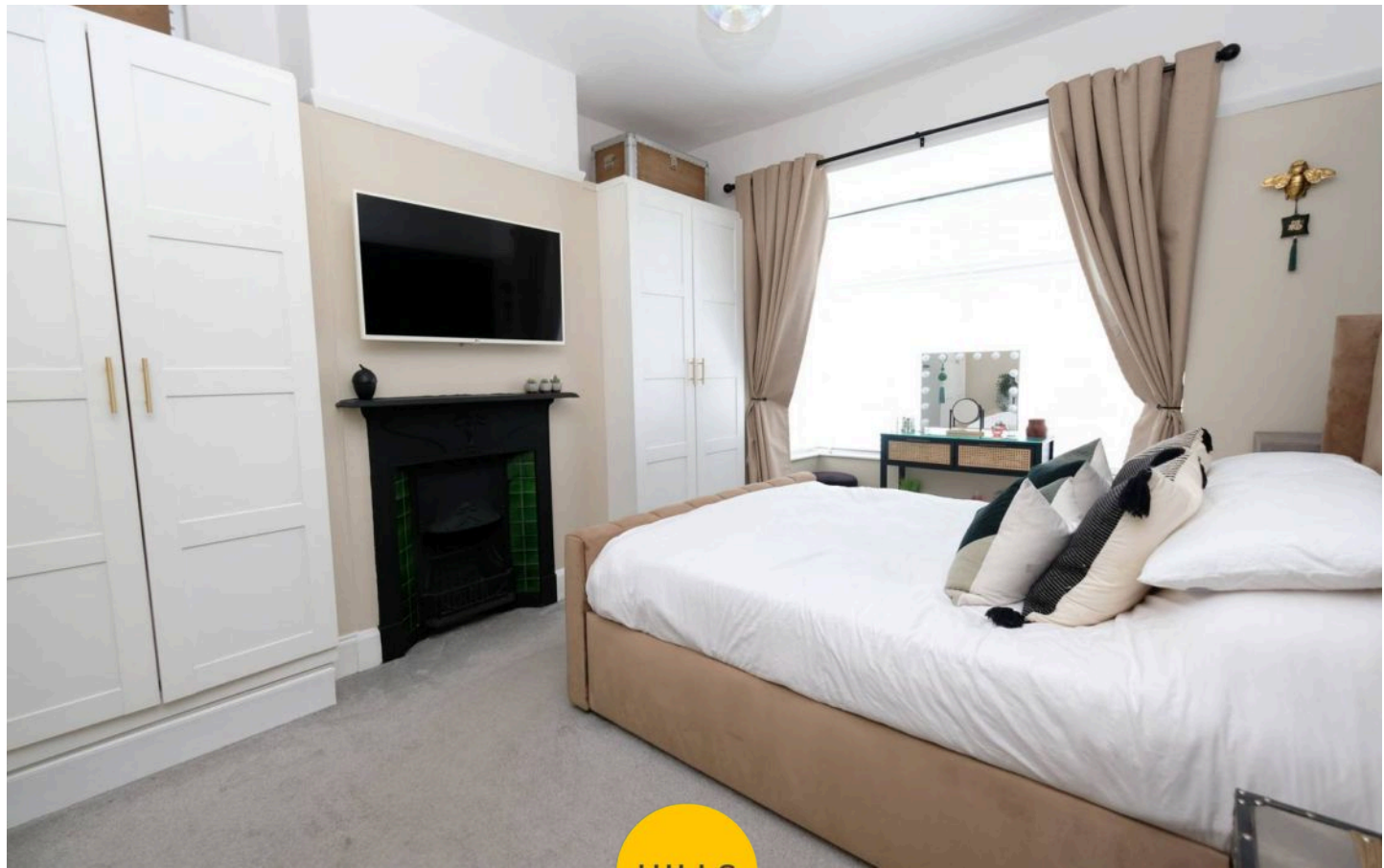
12' 2" x 10' 2" (3.70m x 3.11m)

## Bedroom Three

8' 11" x 7' 10" (2.71m x 2.39m)

## Bathroom

9' 7" x 7' 10" (2.92m x 2.40m)

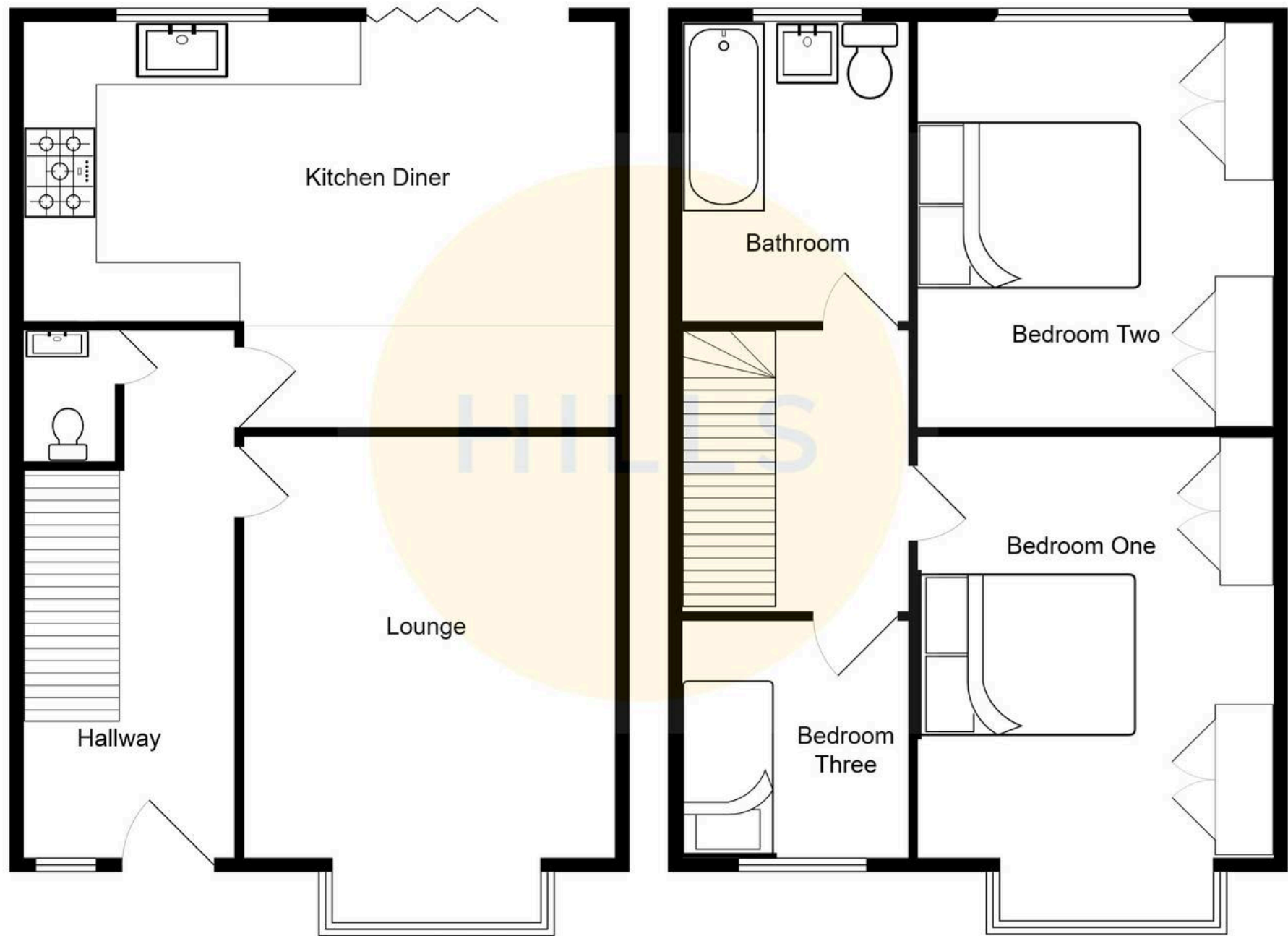






HILLS









## Hills | Salfords Estate Agent

Hills Residential, Sentinel House Albert Street – M30 0SS

0161 707 4900

[sales@hills.agency](mailto:sales@hills.agency)

[www.hills.agency/](http://www.hills.agency/)



THE PROPERTY MISDESCRIPTIONS ACT 1991 The Agent has not tested any apparatus, equipment, fixtures and fittings or services and so cannot verify that they are in working order or fit for the purpose. A Buyer is advised to obtain verification from their Solicitor or Surveyor. References to the Tenure of a Property are based on information supplied by the Seller. The Agent has not had sight of the title documents. A Buyer is advised to obtain verification from their Solicitor. You are advised to check the availability of this property before travelling any distance to view. Every effort and precaution has been made to ensure these particulars are correct and not misleading but their accuracy is not guaranteed nor do they form part of any contract. If there is any point which is of particular importance to you, please contact us and we will provide any information you require. This is advisable, particularly if you intend to travel some distance to view the property. The mention of any appliances and services within these details does not imply that they are in full and efficient working order. These particulars are in draft form awaiting Vendors confirmation of their accuracy. These details must therefore be taken as a guide only.