

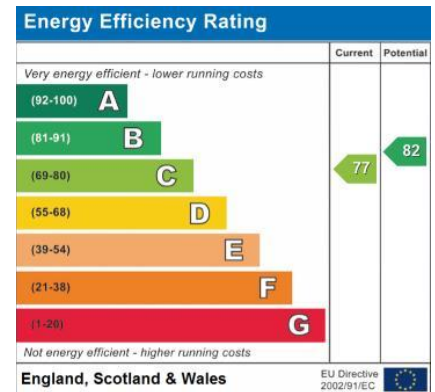
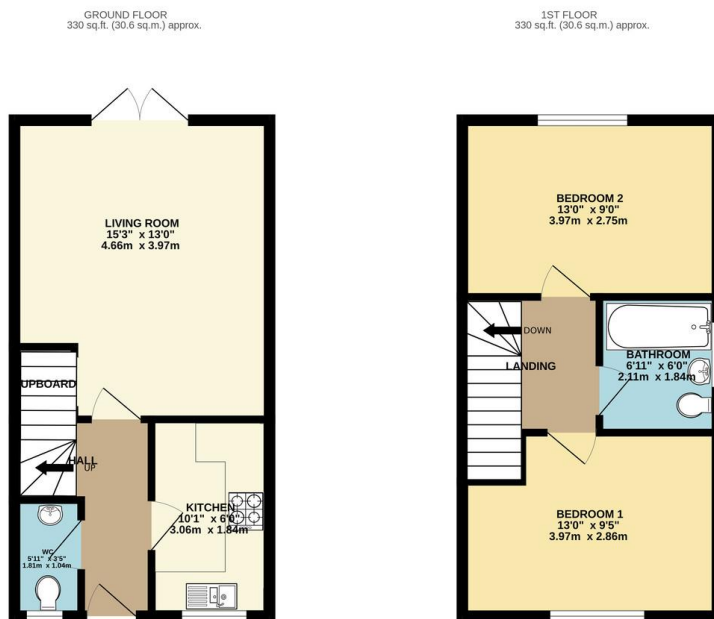


## FOR SALE

2 Bed Semi-Detached House in Willows End, Scraptoft LE7 9TT  
£100,000 for 40% Shared Ownership

40% SHARED OWNERSHIP - Offered for sale is this beautifully presented two bedroom semi-detached home, available at a 40% share with Midland Heart. The property boasts landscaped gardens, ample off-road parking and is set within a quiet cul-de-sac in the highly sought-after village of Scraptoft. Finished to a high standard throughout, this modern home provides an ideal opportunity for first-time buyers. For further information or to arrange a viewing, please contact Phillips George.





- Modern Semi-Detached Home
- £100,000 For 40% Shared Ownership
- Spacious Living Room
- Stylish Fitted Kitchen
- Ground Floor WC
- Landscaped Gardens
- Two Allocated Parking Spaces
- Midland Housing Association

**Agents Note:** Whilst every care has been taken to prepare these sales particulars, they are for guidance purposes only. All measurements are approximate are for general guidance purposes only and whilst every care has been taken to ensure their accuracy, they should not be relied upon and potential buyers are advised to recheck the measurements.

