





Hiltons Estates is delighted to offer this newly refurbished beautiful three bedroom, semi detached family home available. This family home has a lot to offer and it is in an ideal location with array of shops, restaurants and transport facilities all within walking distance.

The house further benefits from double glazed windows throughout and newly renovated throughout, driveway for up to 2/3 cars and the private large rear garden. The accommodation greets you into a spacious entrance hallway, leading to an even more spacious lounge with a dining area and fully fitted kitchen. The upstairs accommodation comprises of three double bedrooms and a bathroom and separate w/c. Laurence Close is situated in a peaceful part of Cowley, with a selection of shops and parks in walking distance.

Semi detached family house of beautiful three bedroom

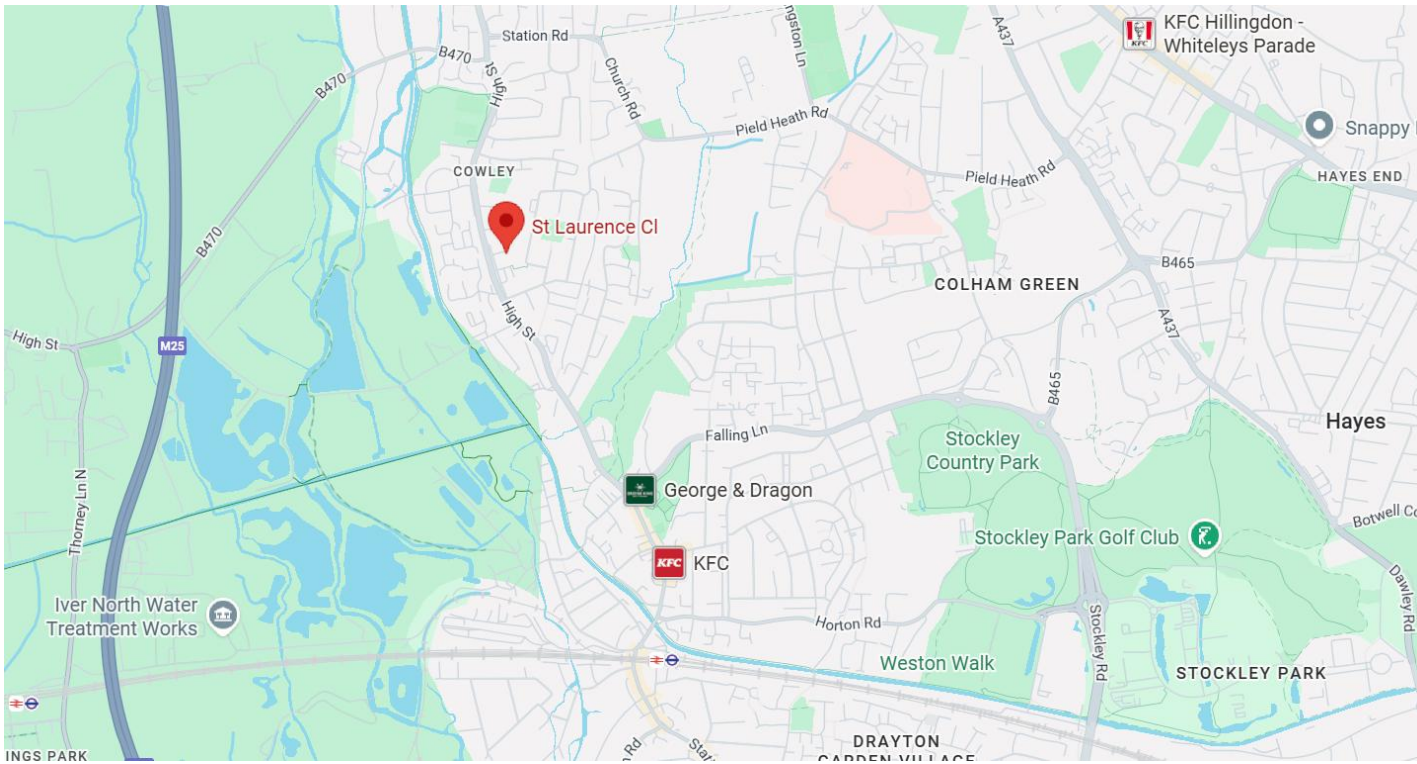
Newly Renovated

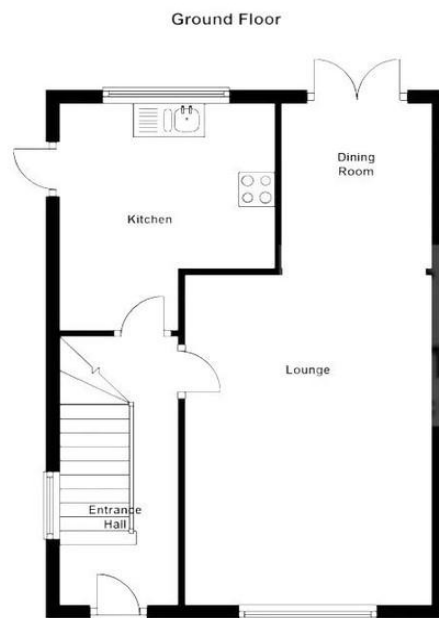
Off Street Parking & Large Rear Garden

Double Glazing Throughout

St Laurence Close is situated in a peaceful part of Cowley with a selection of shops and parks







Score	Energy rating	Current	Potential
92+	A		
81-91	B		88 B
69-80	C		
55-68	D	64 D	
39-54	E		
21-38	F		
1-20	G		

Energy efficiency chart