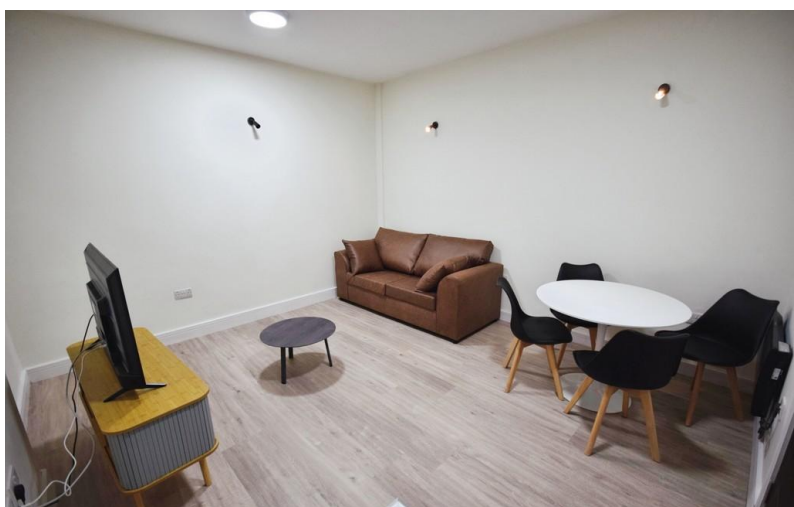


TO LET



King Street, Newcastle-Under-Lyme

1 Bedroom, 1 Bathroom, Ground Floor Flat

£800 pcm



King Street, Newcastle-Under-Lyme

Ground Floor Flat,
1 bedroom, 1 bathroom

£800 pcm

Date available: 24th January 2026

Deposit: £923

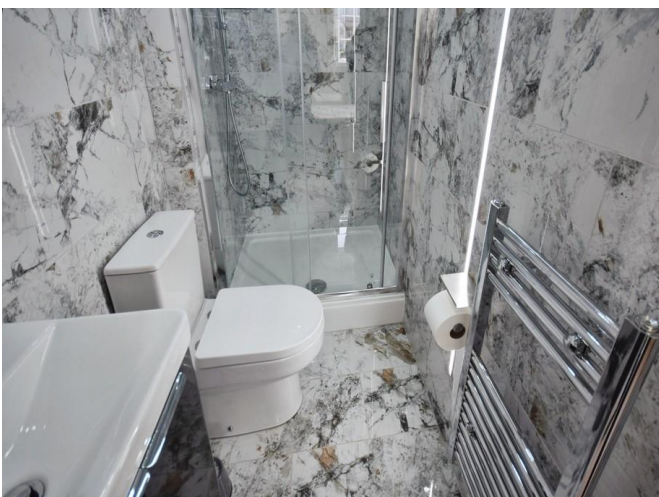
Furnished

Council Tax band:

- Furnished
- Ground Floor Flat
- Close To Town Centre
- Open Plan Lounge/Kitchen
- Appliances Included
- En-suite
- Double Bedroom

Martin&Co is pleased to market this furnished ground floor flat located in Newcastle-Under-Lyme. Within walking distance from the town centre and links to public transport, as well as close proximity Royal Stoke Hospital. The flat features an open-plan living area with a fully equipped kitchen, a spacious double bedroom, and a private en-suite bathroom. Appliances are included for added ease.

Energy Efficiency Rating		
	Current	Potential
Very energy efficient - lower running costs		
(92+) A		
(81-91) B		
(69-80) C	78	85
(55-68) D		
(39-54) E		
(21-38) F		



Martin & Co Stoke on Trent

12 Albion Street • Stoke-On-Trent • ST1 1QH

T: 01782 262880 • E: stokeontrent@martinco.com <http://www.martinco.com>

01782 262880



Accuracy: References to the Tenure of a Property are based on information supplied by the Seller. The Agent has not had sight of the title documents. A Buyer is advised to obtain verification from their Solicitor. Items shown in photographs including but not limited to carpets, fixtures and fittings are not included unless specifically mentioned within the sales particulars. They may however be available by separate negotiation. Buyers must check the availability of any property and make an appointment to view before embarking on any journey to see a property. No person in the employment of the agent has any authority to make any representation about the property, and accordingly any information given is entirely without responsibility on the part of the agents, sellers(s) or lessors(s). Any property particulars are not an offer or contract, nor for part of one. **Sonic / laser Tape:** Measurements taken using a sonic / laser tape measure may be subject to a small margin of error. **All Measurements:** All Measurements are Approximate. **Services Not tested:** The Agent has not tested any apparatus, equipment, fixtures and fittings or services and so cannot verify that they are in working order or fit for the purpose. A Buyer is advised to obtain verification from their Solicitor or Surveyor.