



16 Pembury Road, Tonbridge – TN9 2HX
Tonbridge

Guide Price **£975,000**

bracketts
est. 1828



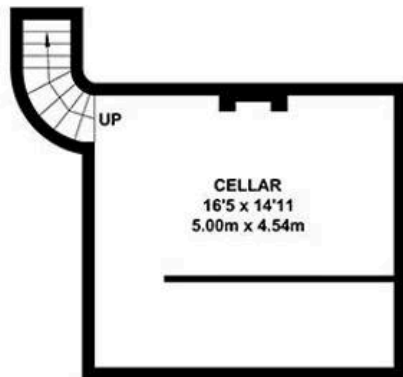
- Good Size Rear Garden
- Viewing Highly Recommended
- No Onward Chain
- Four Bedroom
- Kitchen / breakfast Room
- Three Reception Rooms
- Drive to front, Leading to Ample off Street Parking to Rear
- Close to Coveted Schools, High Street & Main Line Station
- Sought After South Tonbridge Location
- Period Detached Family Home

Imposing Victorian detached family home in Sought-After South Tonbridge. A rare opportunity to own a beautiful characterful Victorian detached residence, dating from the 1890s and situated in one of South Tonbridge's most desirable locations. This substantial and imposing home has a wealth of character and offers exciting potential for further enhancement throughout. Positioned close to highly regarded schools, the mainline station with fast links to London, excellent road networks, and Tonbridge's High Street. Council Tax band: G

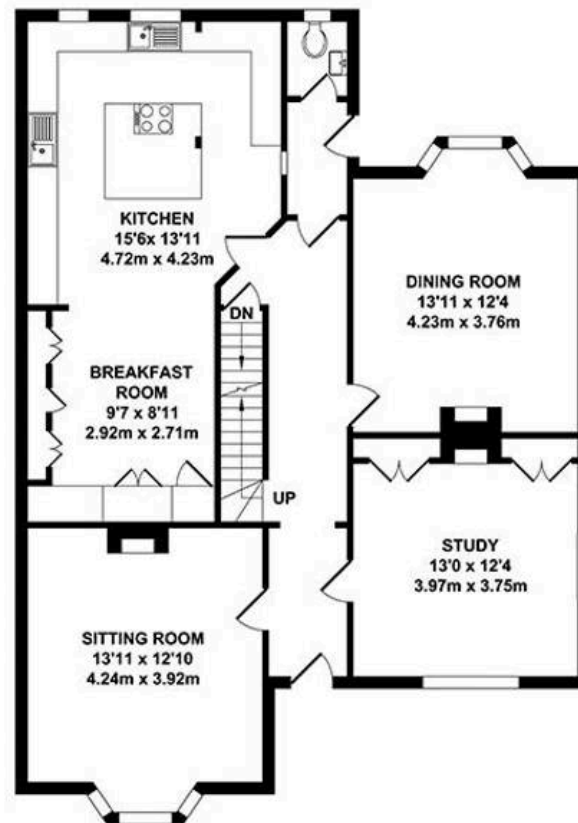
Tenure: Freehold



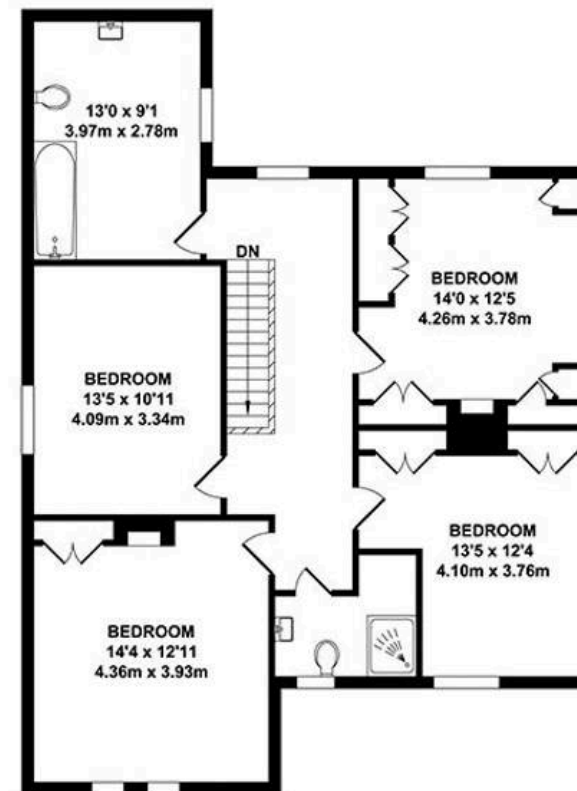




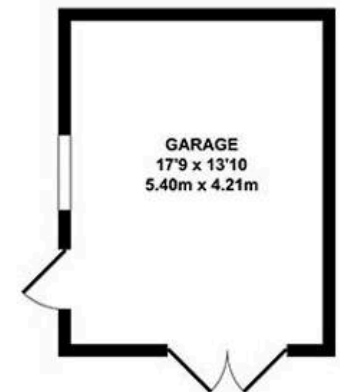
BASEMENT
APPROX. FLOOR AREA
262 SQ.FT.
(24.37 SQ.M.)



GROUND FLOOR
APPROX. FLOOR AREA
1060 SQ.FT.
(98.45 SQ.M.)



FIRST FLOOR
APPROX. FLOOR AREA
973 SQ.FT.
(90.38 SQ.M.)



OUTBUILDING
APPROX. FLOOR AREA
245 SQ.FT.
(22.73 SQ.M.)

TOTAL APPROX. FLOOR AREA 2540 SQ.FT. (235.93 SQ.M.)

Whilst every attempt has been made to ensure the accuracy of the floor plan contained here, measurements of doors, windows, rooms and any other items are approximate and no responsibility is taken for any error, omission or mis-statement. This plan is for illustrative purposes only and should be used as such by any prospective purchaser. The services, systems and appliances shown have not been tested and no guarantee as to their operability or efficiency can be given.

Zome Media ©2025